

The image is a cover for a catalog. It features a large, stylized checkered racing flag that dominates the lower two-thirds of the frame. The flag's squares are black and white, and it has a wavy, three-dimensional appearance. The top of the cover is a bright yellow-to-orange gradient. In the upper center, the word "HARWOOD" is written in a bold, white, italicized font with a thick black outline, set within a black, rounded rectangular banner. To the right of this banner, the word "CATALOG" is written in a smaller, bold, black, italicized font. The overall design is dynamic and racing-themed.

HARWOOD

CATALOG

HARWOOD

FOR 40 YEARS



Harwood's 6 Acres Main Plant Represents
THE LARGEST PRODUCTION FACILITY
In The Industry.

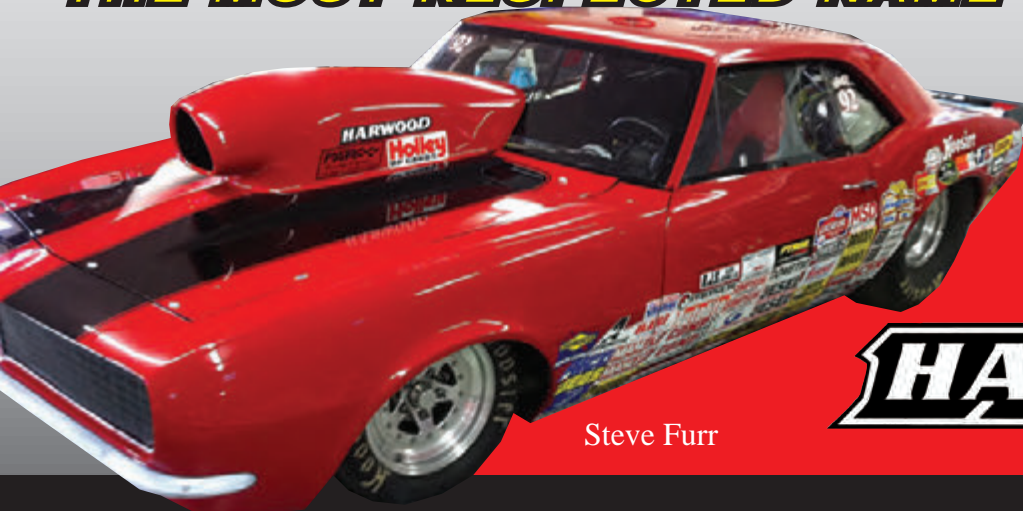


**Harwood Maintains Over 1000 Molds To Insure
The Best Fit And Finish In The Industry.**



HARWOOD

THE MOST RESPECTED NAME IN FIBERGLASS!



Steve Furr

**CHAMPIONS
CHOOSE**

HARWOOD

MADE IN AMERICA

CONTENTS

ACCESSORIES

Fastener Kits	4
Hood Springs	4
Turbo Inlets	4
DASH HOODS	4

Camaro	5-13
Customer Car Photos	11
Chevy II, Nova	14-17
Cutlass	28
Chevelle, Malibu	19-21
Firebird	19
Monte Carlo	22
Mustang	23-27
Vega	28
Chevy Trucks	28-32
Ford Trucks	33

SCOOPS

Cowl Scoops	34-35
Aero Scoops	36-41
Dragster Scoops	42-43

FRONT ENDS

DOORS	46-47
--------------	-------

DECK LIDS

BUMPERS	48-49
----------------	-------

WHEEL WELL OPENINGS	50-51
----------------------------	-------

POLYCARBONATE WINDOWS	52
	53-55



Jeff Chandler

HARWOOD *Known World Wide, FOR QUALITY.*

PERFORMANCE
YOU CAN DEPEND ON!

**OVER
500 SCOOPS
AND
1000 HOODS
IN STOCK!**

**IMMEDIATE
SHIPPING!**



HARWOOD HOODS

Harwood Bolt-On **SHOW SERIES** Hoods Feature
A Smooth Finished Underside.

(As Pictured Right).



HARWOOD'S BOLT-ON HOODS:

- **OUTSTANDING FIT AND FINISH**
- **EASY INSTALLATIONS**
- **USES FACTORY HINGES AND LATCHES**
- **HAND MADE IN AMERICA**

**NOTE: MINIMAL TRIMMING MAY BE REQUIRED
ALWAYS TRIAL FIT BEFORE PAINTING**



Turbo Inlet

#1180
Round Turbo Inlet:
6" outside 5" inside opening.

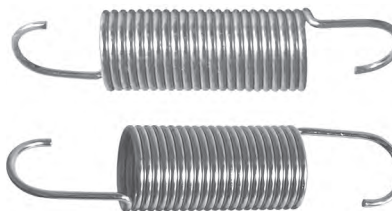
#1181
Oval Turbo Inlet:
10 3/4" x 6 1/2" outside 4 1/2" inside opening.

#1182
Oval Turbo Inlet Pairs:
10 3/4" x 6 1/2" outside, 4 1/2" inside opening.

#1183
Round Turbo Inlet Pairs:
6" outside 5" inside opening.

Harwood Hood Springs for Bolt-On Hoods

Harwood Hood Springs Are Designed To Replace The Factory Springs When Installing Harwood's Fiberglass Hoods In The Following Applications.



#200
Low Tension (Silver)
Hood Springs (pr.)

#210
Medium Tension (Gold)
Hood Springs (pr.)

#215
High Tension (Black)
Hood Springs (pr.)

Some Bolt-On Hoods Cannot Use Factory Hood Springs. Applications Where Low Tension Springs Are Not Available, Harwood Includes A Prop-Rod.

HARWOOD UNIVERSAL RACE CAR DASH



Part# 5000: 59 1/2" LENGTH, 15" WIDE X 14" TALL.
This is a universal design dash that can be trimmed to fit.

Harwood Lift-Off Hoods Light Weight, Race Applications!



HARWOOD FASTENER KIT

Harwood 10- piece quarter-turn kit is ideal for installing lift-off hoods, deck lids, front ends, etc.

#192



'67-'69 Camaro

Pro-Touring

Show Series

Bolt-On #B-10107

Use #210 Low Tension
Hood Springs

NEW!



2" Z-28 Cowl Induction Hood

Bolt-On #B-10101

Use #200 Low Tension
Hood Springs

Lift-Off #10101

Use #192
Fastener Kit



4" Cowl Induction Hood

Show Series

Bolt-On #B-10104

Use #210 Low Tension
Hood Springs

Lift-Off #10104

Use #192 Fastener Kit



6" Cowl Induction Hood

Show Series

Bolt-On #B-10106

Use #210 Low Tension
Hood Springs

Lift-Off #10106

Use #192 Fastener Kit



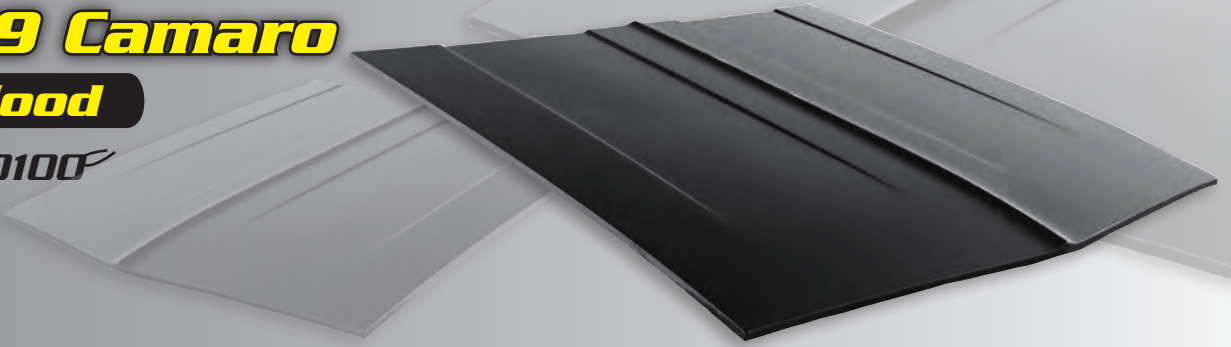
RACE HOODS

'67-'69 Camaro

Stock Hood

Lift-Off #10100

Use #192 Fastener Kit



Stock W/Cowl Panel

Lift-Off #10095

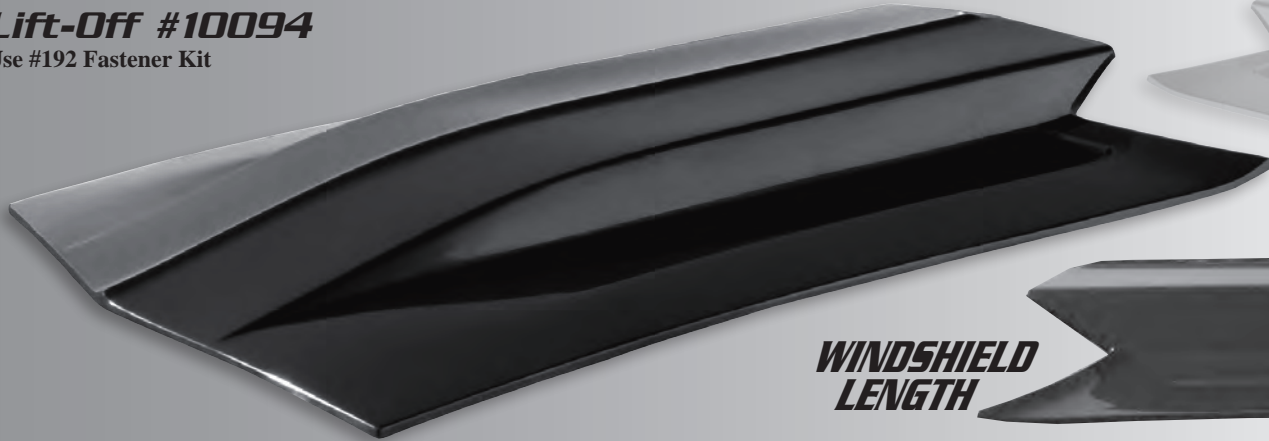
Use #192 Fastener Kit



4" Cowl W/S Length Scoop W/ Cowl Panel

Lift-Off #10094

Use #192 Fastener Kit



WINDSHIELD
LENGTH

6" Cowl W/S Length Scoop W/Cowl Panel

Lift-Off #10096

Use #192 Fastener Kit



WINDSHIELD
LENGTH

'70-'81 Camaro

3" Z-28 Cowl Induction Hood

Show Series
Bolt-On #B-11103

Use #215 Low Tension
Hood Springs

Lift-Off #11103
Use #192 Fastener Kit



4" Cowl Induction Hood

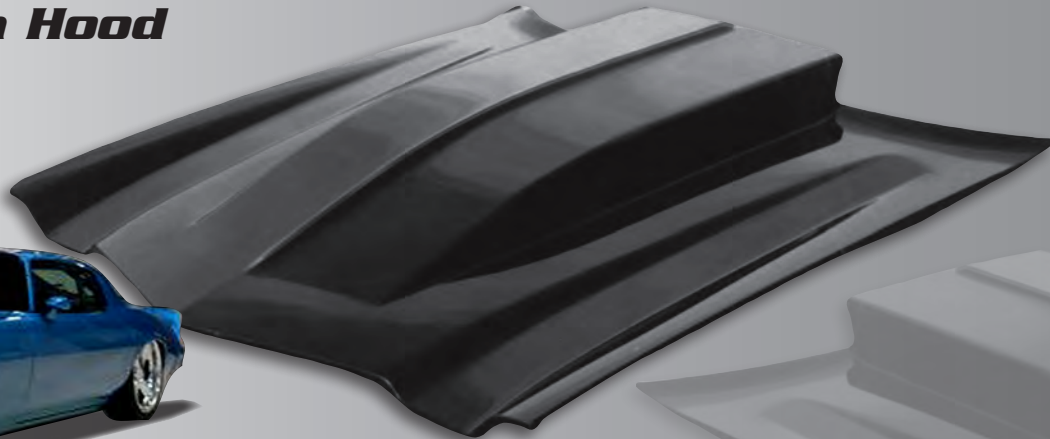
Show Series
Bolt-On #B-11104

Use #215 Low Tension
Hood Springs

Lift-Off #11104
Use #192 Fastener Kit



Trent Goodwin



6" Cowl Induction Hood

Lift-Off #11106
Use #192 Fastener Kit



6" Cowl W/S Length Scoop

Lift-Off #11206
Use #192 Fastener Kit



NEW!

WINDSHIELD
LENGTH

'70-'81 Camaro

Stock Hood

Lift-Off #11100

Use #192 Fastener Kit

Pro-Touring

Show Series

Bolt-On #B-11107

Use #215 Low Tension

Hood Springs



Z06 Bezel
Included

Lonnie Johnson

'82-'92 Camaro

Stock Hood

Lift-Off #12100

Use #192 Fastener Kit

3" Cowl Induction Hood

Show Series

Bolt-On #B-12101

Lift-Off #12101

Use #192 Fastener Kit



'82-'92 Camaro
4" Cowl Induction Hood

Show Series
Bolt-On #B-12103

Lift-Off #12103
Use #192 Fastener Kit



6" Cowl W/S Length Scoop

Lift-Off #12106
Use #192 Fastener Kit



2.5" Daytona IROC Hood
Bolt-On #B-12104



Pro-Touring
Show Series
Bolt-On #B-12107



'93-'97 Camaro

2.5" Cowl Induction Hood

Show Series

Bolt-On #B-12201



2.5" Ram Air Hood

Show Series

Bolt-On #B-12202



'98-'02 Camaro

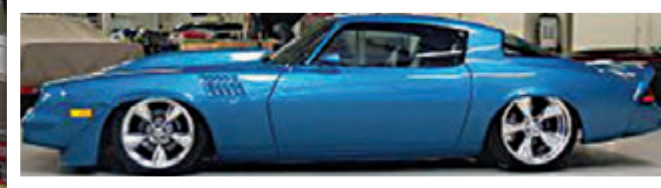
2.5" Cowl Induction Hood

Show Series

Bolt-On #B-12301

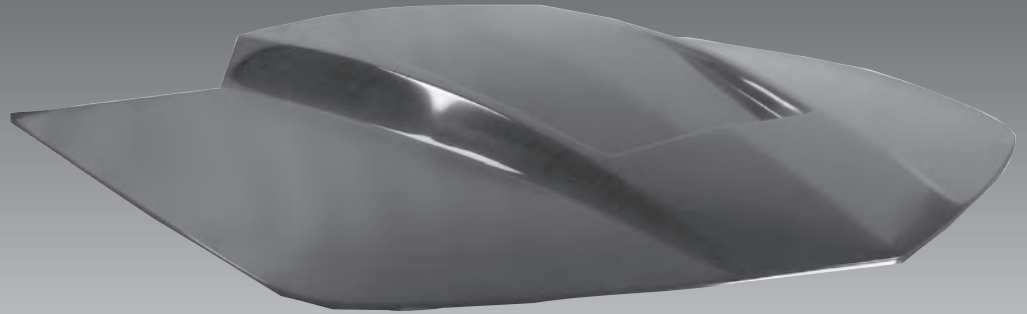


Raymond Castillo



2010-2014 CAMARO

3" Cowl Induction



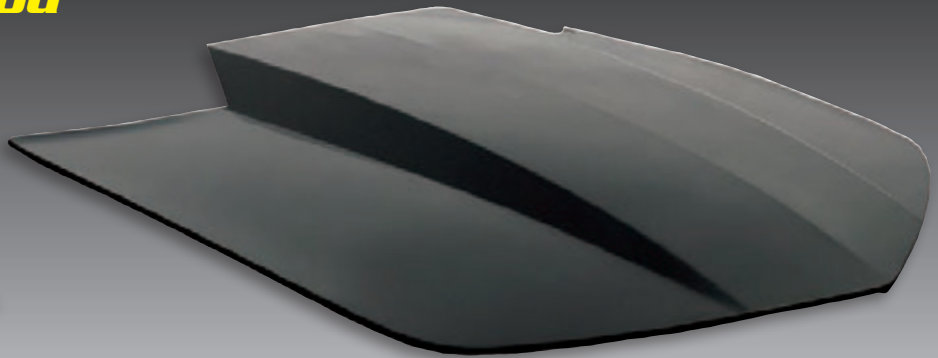
3" Cowl Induction Hood

Show Series

Bolt-On #B-12401

Lift-Off #12401

Use #192 Fastener Kit



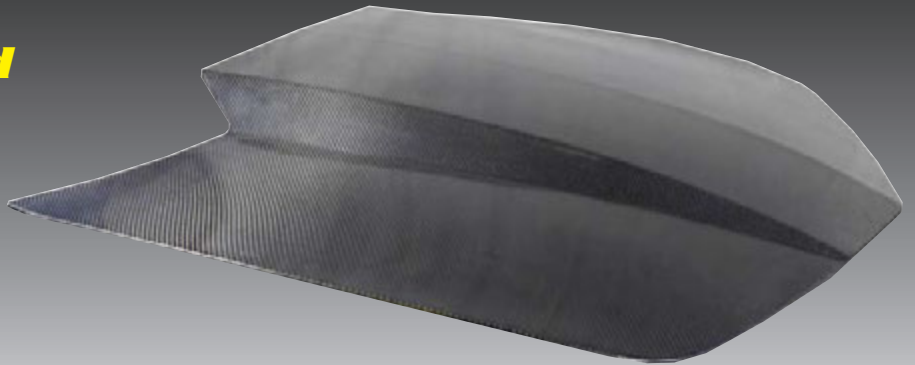
Carbon Fiber 3" Cowl Induction Hood

Show Series

Bolt-On #B-12401-CF

Lift-Off #12401-CF

Use #192 Fastener Kit



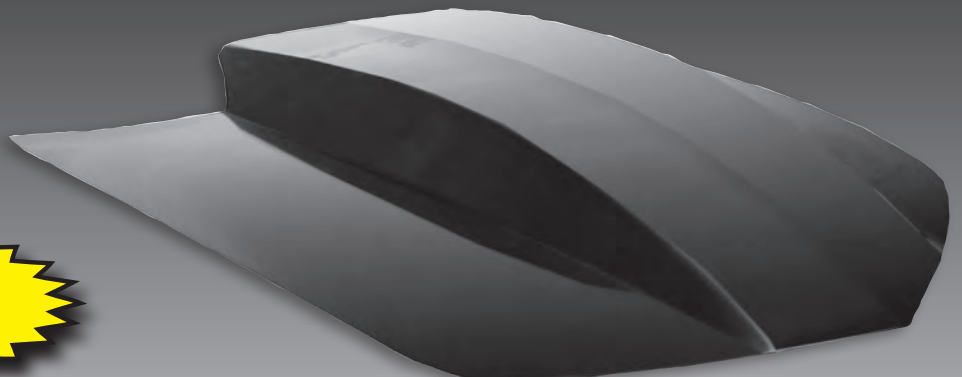
5" Cowl Induction Hood

Show Series

Bolt-On #B-12402

Lift-Off #12402

Use #192 Fastener Kit



ONE PIECE

REAR DECK LID WITH SPOILER

Bolt-On #B-12501

FINISHED UNDERSIDE
Accepts Factory Hardware
& Upholstery

NEW!

Robert Johnson

'62-'65 Chevy II Nova

4" Cowl

Lift-Off #13034

Use #192 Fastener Kit



6" Cowl W/S Length Scoop

Lift-Off #13036

Use #192 Fastener Kit



WINDSHIELD LENGTH



'66-'67 Chevy II Nova

Stock Hood

Lift-Off #13100

Use #192 Fastener Kit



4" Cowl Induction Hood

Show Series

Bolt-On #B-13104

Use #210 Low Tension
Hood Springs

Lift-Off #13104

Use #192 Fastener Kit



Ron Davis

6" Cowl W/ Length Scoop

Lift-Off #13106

Use #192 Fastener Kit



**WINDSHIELD
LENGTH**

'68-'74 Chevy II Nova

Stock Hood

Lift-Off #14100

Use #192 Fastener Kit



Stock Hood W/Cowl Panel

Lift-Off #14095

Use #192 Fastener Kit



2" Cowl Induction Hood

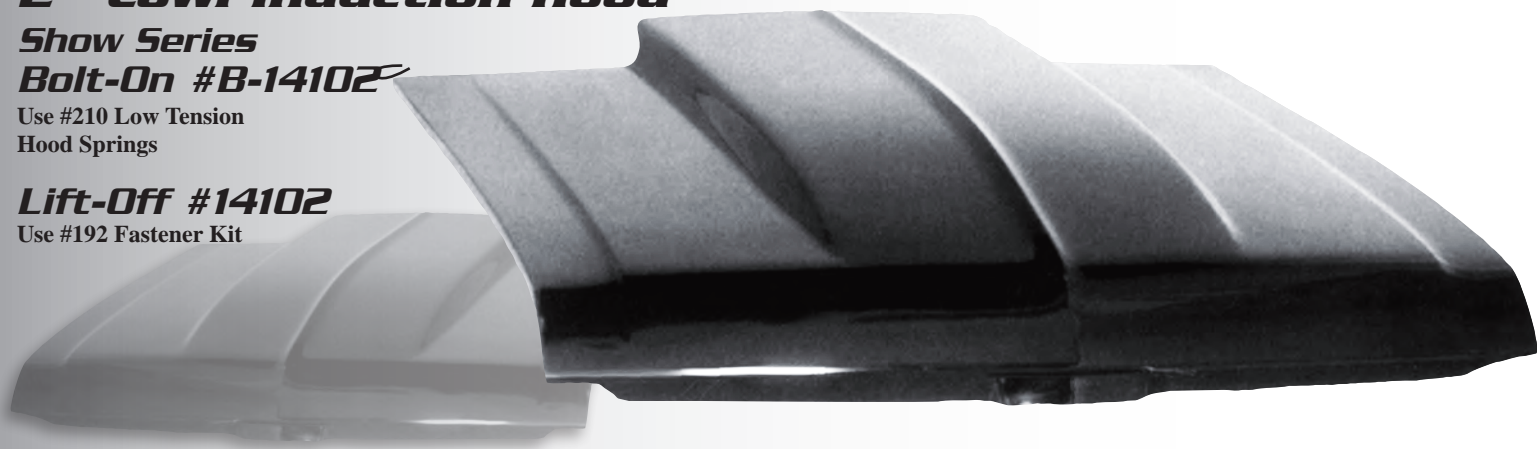
Show Series

Bolt-On #B-14102

Use #210 Low Tension
Hood Springs

Lift-Off #14102

Use #192 Fastener Kit



4" Cowl Induction Hood

Show Series

Bolt-On #B-14104

Use #210 Low Tension
Hood Springs

Lift-Off #14104

Use #192 Fastener Kit



'68-'74 Chevy II Nova

5" Cowl W/S Length Scoop

W/Cowl Panel

Lift-Off #14105

Use #192 Fastener Kit



6" Cowl Induction Hood

Show Series

Bolt-On #B-14106

Use #210 Low Tension
Hood Springs

Lift-Off #14106

Use #192 Fastener Kit



'68-'74 Nova

Pro Touring

Show Series

Bolt-On #B-14107

Use #210 Low Tension
Hood Springs



'82-'92 Firebird

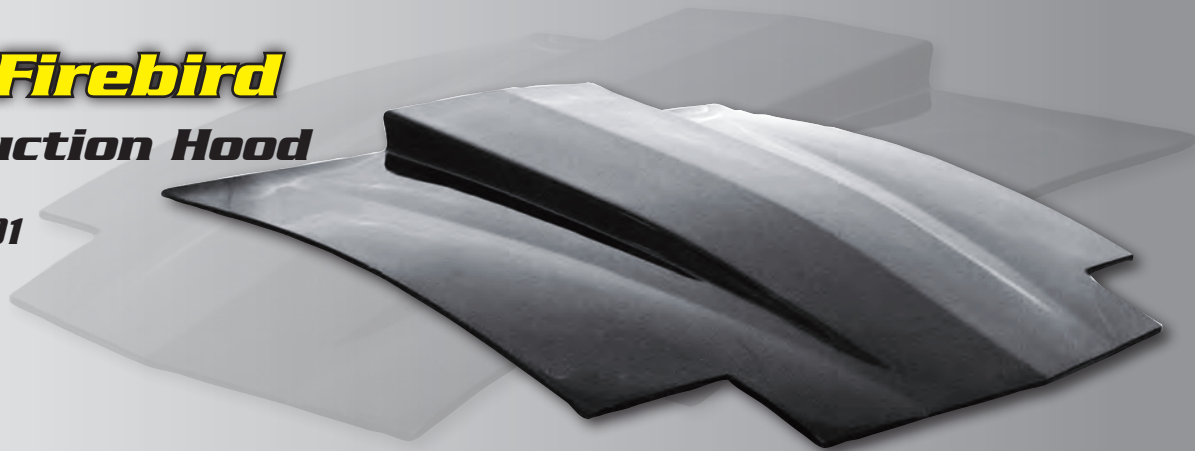
3" Cowl Induction Hood

Show Series

Bolt-On #B-20101

Lift-Off #20101

Use #192 Fastener Kit



'93-'97 Firebird

Ram Air Hood

Show Series

Bolt-On #B-20202



LS1 Style Ram Air Hood

Show Series

Bolt-On #B-20203



'98-'02 Firebird

Ram Air Hood

Show Series

Bolt-On #B-20302



'67 Chevelle, Malibu, El Camino

4" Cowl

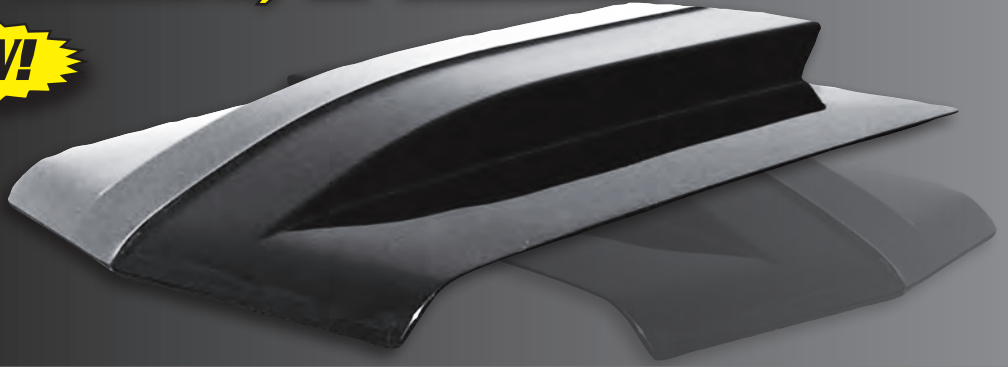
NEW!

**Show Series
Bolt-On #B-21204**

Use #210 Low Tension
Hood Springs

Lift-Off #21204

Use #192 Fastener Kit



'68-'69 Chevelle, Malibu, El Camino

4" Cowl Induction Hood

**Show Series
Bolt-On #B-22104**

Use #210 Low Tension
Hood Springs

Lift-Off #22104

Use #192 Fastener Kit



6" Cowl W/5 Length Scoop W/Cowl Panel

Lift-Off #22106

Use #192 Fastener Kit



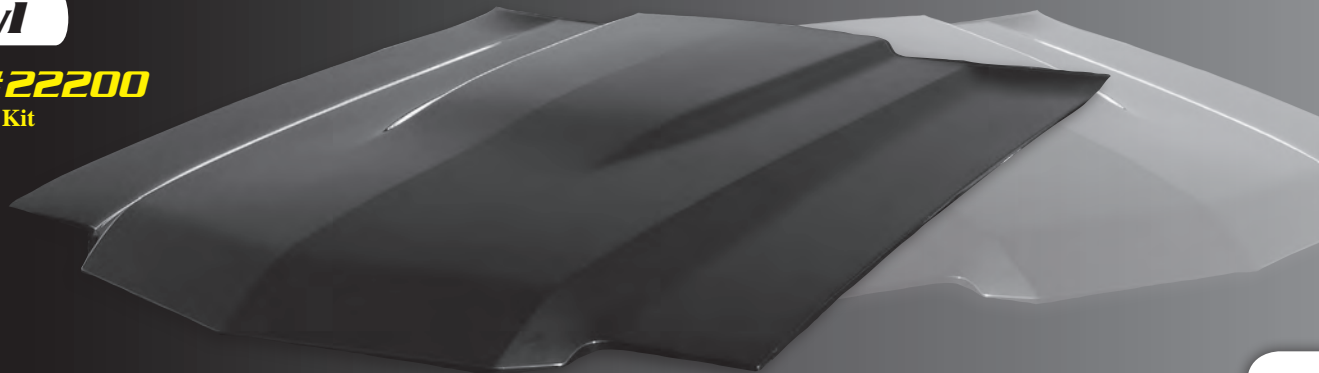
WINDSHIELD LENGTH

'70-'72 Chevelle, Malibu, El Camino

2" Cowl

Lift-Off #22200

Use #192 Fastener Kit



'70-'72 Chevelle, Malibu, El Camino

4" Cowl Induction Hood

Show Series

Bolt-On #B-22204

Use #210 Low Tension
Hood Springs

Lift-Off #22204

Use #192 Fastener Kit



Cory Graper

6" Cowl W/S Length Scoop

Lift-Off #22206

Use #192 Fastener Kit



Tony Sanders

Pro Touring

Show Series

Bolt-On #B-22207

Use #210 Low Tension
Hood Springs

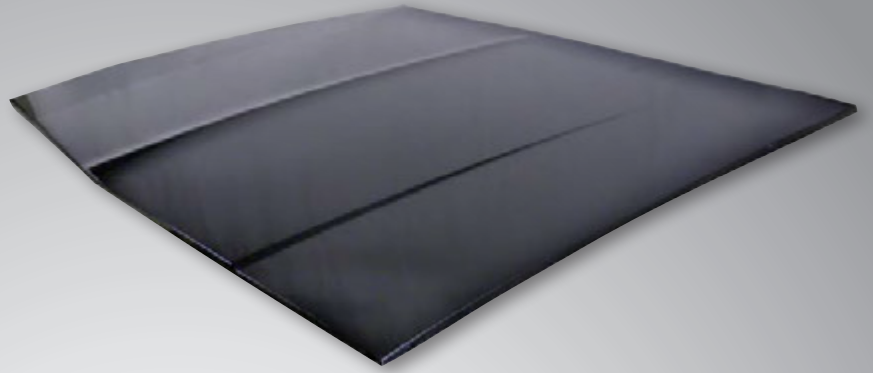


'78-'87 Malibu

Stock Hood

Lift-Off #23100

Use #192 Fastener Kit



3" Cowl Induction Hood

Bolt-On #B-23101

Includes Prop Rod

Lift-Off #23101

Use #192 Fastener Kit



4" Cowl Induction Hood

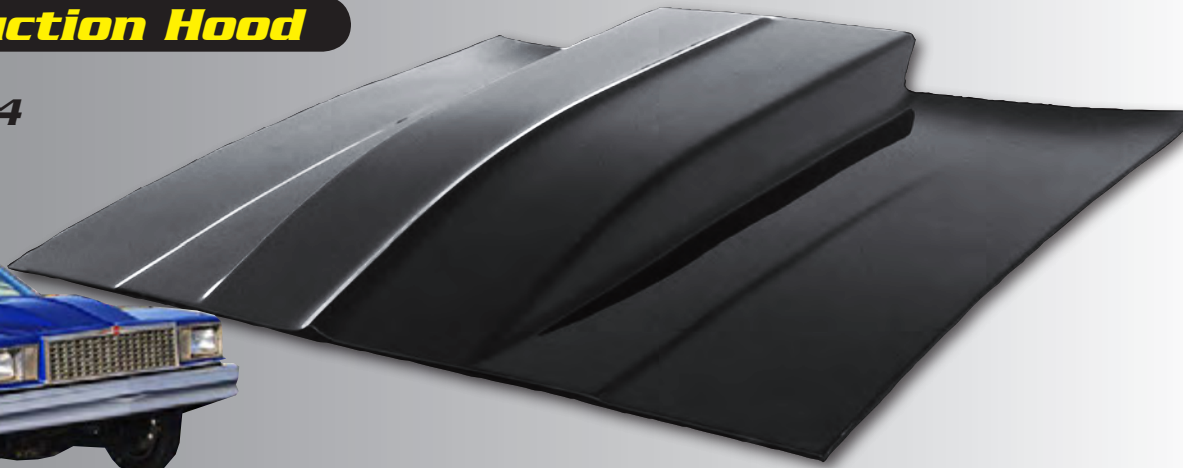
Show Series

Bolt-On #B-23104

Includes Prop Rod

Lift-Off #23104

Use #192 Fastener Kit



6" Cowl W/S Length Scoop

Lift-Off #23106

Use #192 Fastener Kit



WINDSHIELD LENGTH



'81-'88 Monte Carlo

3" Cowl Induction Hood

Bolt-On #B-29101

Includes Pop Rod
Must Remove Factory
Hood Springs

Lift-Off #29101

Use #192 Fastener Kit



4" Cowl Induction Hood

Show Series

Bolt-On #B-29104

Includes Pop Rod
Must Remove Factory
Hood Springs

Lift-Off #29104

Use #192 Fastener Kit



6" Cowl W/S Length Scoop

Lift-Off #29106

Use #192 Fastener Kit



Pro-Touring

Show Series

Bolt-On #B-29107

Includes Pop Rod
Must Remove Factory
Hood Springs



Z06 Bezel Included



Cowl Panel

'79-'93 Mustang

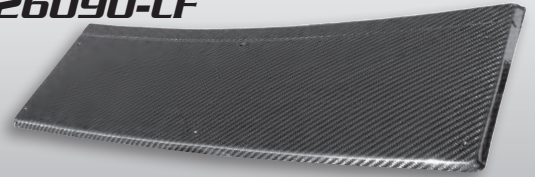
Smooth ABS

#26090



Smooth Carbon Fiber

#26090-CF



HARWOOD HOODS

'83-'86 Mustang

2.5" Cowl Induction Hood

Bolt-On #B-26201

Exc. SVO

Lift-Off #26201

Use #192 Fastener Kit



'87-'93 Mustang

Stock Hood

Lift-Off #26300

Use #192 Fastener Kit



NEW!

3" Cowl Induction Hood

Show Series

Bolt-On #B-26301

Lift-Off #26301

Use #192 Fastener Kit



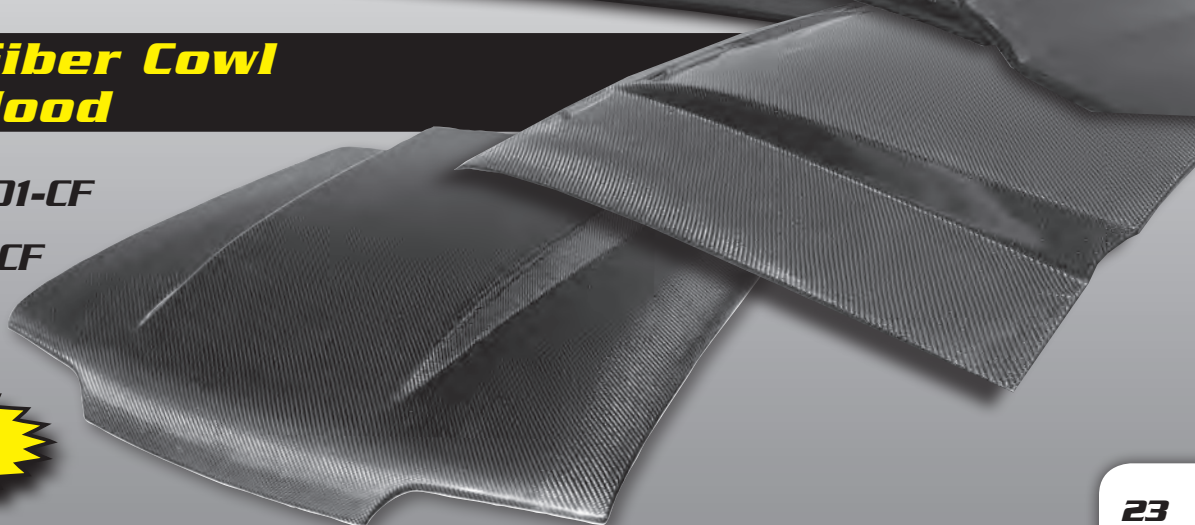
3" Carbon Fiber Cowl Induction Hood

Show Series

Bolt-On #B-26301-CF

Lift-Off #26301-CF

Use #192 Fastener Kit



NEW!

'87-'93 Mustang

4" Cowl Induction Hood

Show Series

Bolt-On #B-26304

Lift-Off #26304

Use #192 Fastener Kit

4" Cowl W/S Length Scoop

Lift-Off #26305

Use #192 Fastener Kit

WINDSHIELD LENGTH

4" Carbon Fiber W/S Length Scoop

Lift-Off #26305-CF

Use #192 Fastener Kit

NEW!

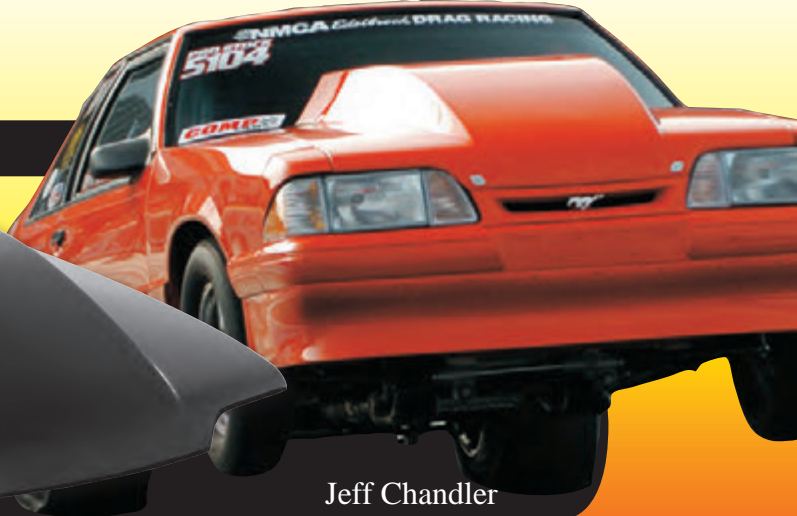
WINDSHIELD LENGTH

'87-'93 Mustang

6" Cowl Induction Hood

Lift-Off #26306

Use #192 Fastener Kit

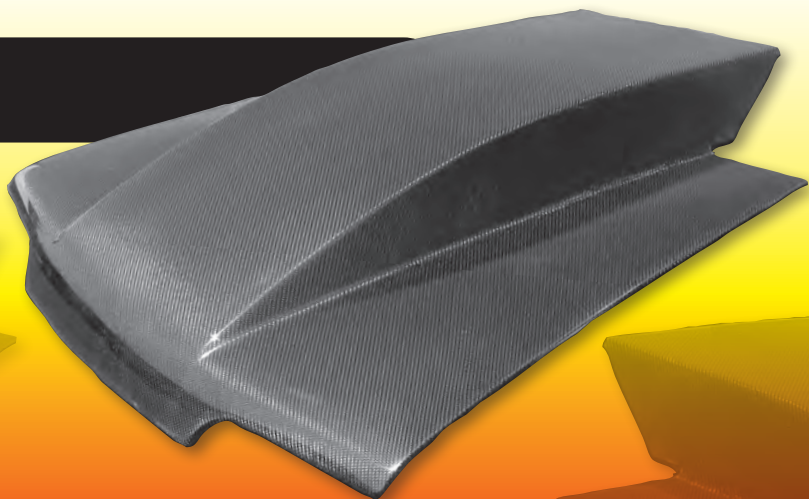


Jeff Chandler

6" Cowl Carbon Fiber W/S Length Scoop

Lift-Off #26306-CF

Use #192 Fastener Kit



'94-'98 Mustang

3" Cobra R Style

Show Series

Bolt-On #B-26403



Tim Pitman

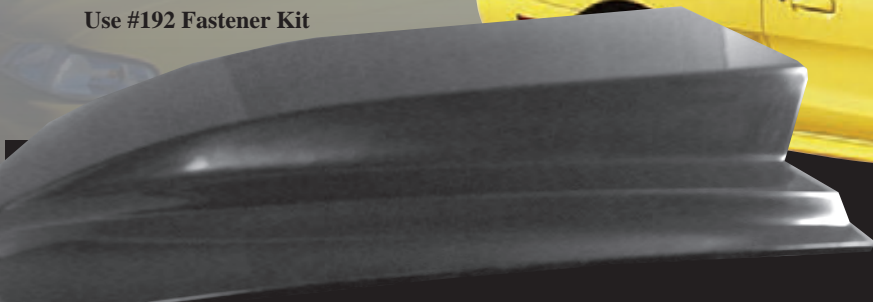
4" Cobra R Style

Show Series

Bolt-On #B-26405

Lift-Off #26405

Use #192 Fastener Kit



'99-'04 Mustang

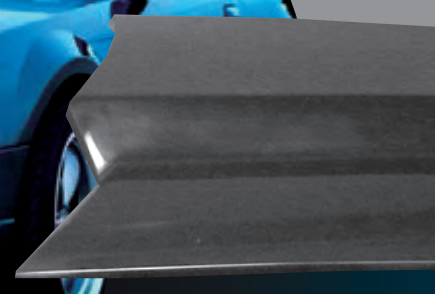
2.5" Cowl Induction Hood

Show Series

Bolt-On #B-26601

Lift-Off #26601

Use #192 Fastener Kit



4" Cowl W/S Length Scoop W/Cowl Panel

Lift-Off #26604

Use #192 Fastener Kit



NEW!



WINDSHIELD
LENGTH

Chris Davidson

'05-'09 Mustang

2.5" Cowl Induction Hood

Show Series

Bolt-On #B-26605

Lift-Off #26605

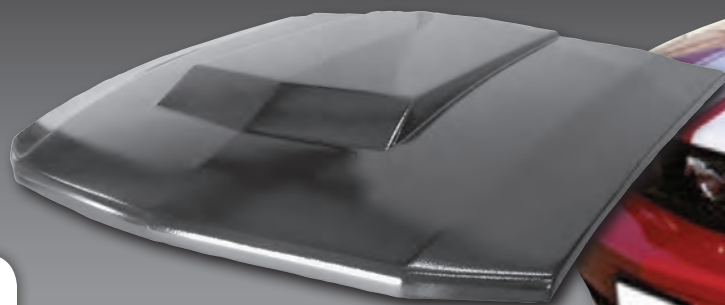
Use #192 Fastener Kit



'05-'09 Eleanor Style Hood

Show Series

Bolt-On #B-26607



2010-2012 Mustang

3" Cowl Induction Hood

Show Series
Bolt-On #B-26801

Lift-Off #26801
Use #192 Fastener Kit

Gary Ford



3" Carbon Fiber Cowl Induction Hood

Show Series
Bolt-On #B-26801-CF

Lift-Off #26801-CF
Use #192 Fastener Kit



David Branson

2013-2014 MUSTANG

3" Cowl

Show Series
Bolt-On
#B-26803

Lift-Off
#26803
Use #192 Fastener Kit

3" Carbon Fiber Cowl

Show Series
Bolt-On
#B-26803-CF

Lift-Off
#26803-CF
Use #192 Fastener Kit



2013-2014 MUSTANG

RAM AIR HEAT EXTRACTOR

Show Series
Bolt-On #B-26805



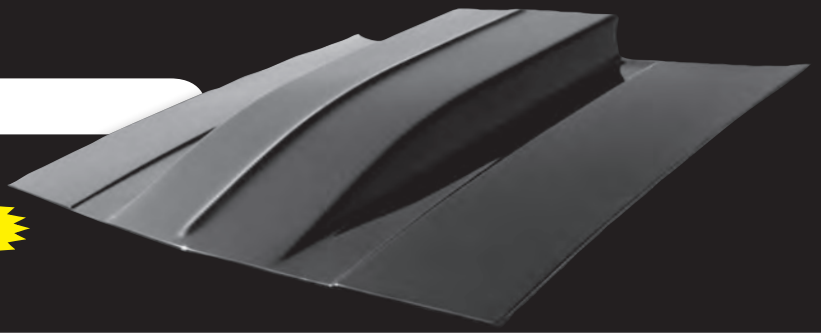
'81-'87 Cutlass

3" Cowl Induction Hood

Bolt-On #B-28104

Lift-Off #28104

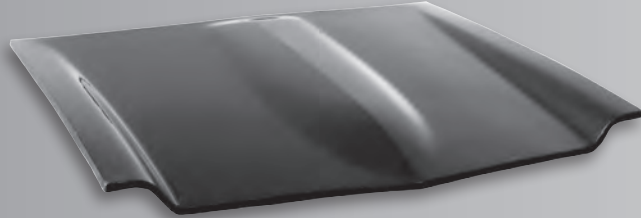
Use #192 Fastener Kit



Stock Hood

Lift-Off #15100

Use #192 Fastener Kit



'71-'77 Vega

4" Cowl Hood

Lift-Off #15104

Use #192 Fastener Kit



'82-'93 5-10 / 5-15

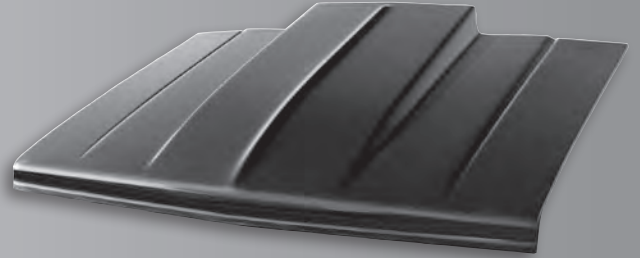
2.5" Cowl Induction Hood

Show Series

Bolt-On #B-41101

Lift-Off #41101

Use #192 Fastener Kit



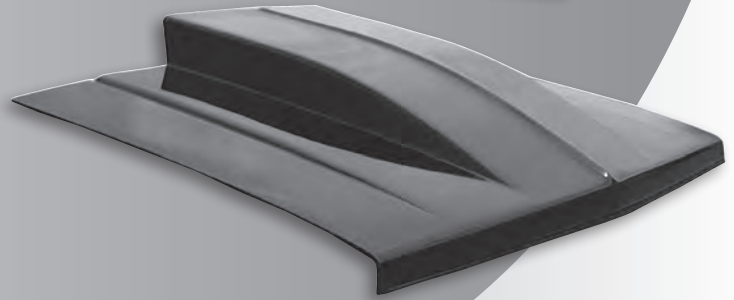
4" Cowl Induction Hood

Show Series

Bolt-On #B-41104

Lift-Off #41104

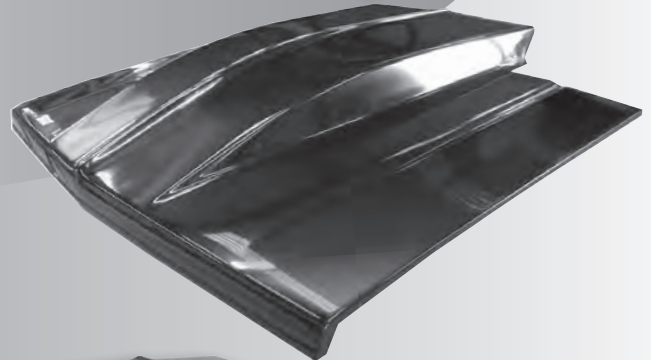
Use #192 Fastener Kit



4" Cowl Windshield Length Scoop Induction Hood

Lift-Off #41204

Use #192 Fastener Kit



6" Cowl W/S Length Scoop

Lift-Off #41106

Use #192 Fastener Kit



WINDSHIELD LENGTH

'94-'03 5-10 / 5-15

2.5" Cowl Induction Hood

Show Series
Bolt-On #B-42101

Lift-Off #42101
Use #192 Fastener Kit

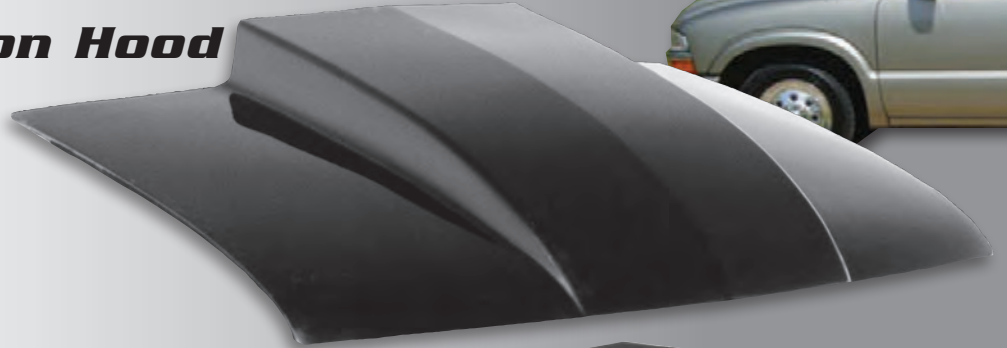


Michael Hopper

4" Cowl Induction Hood

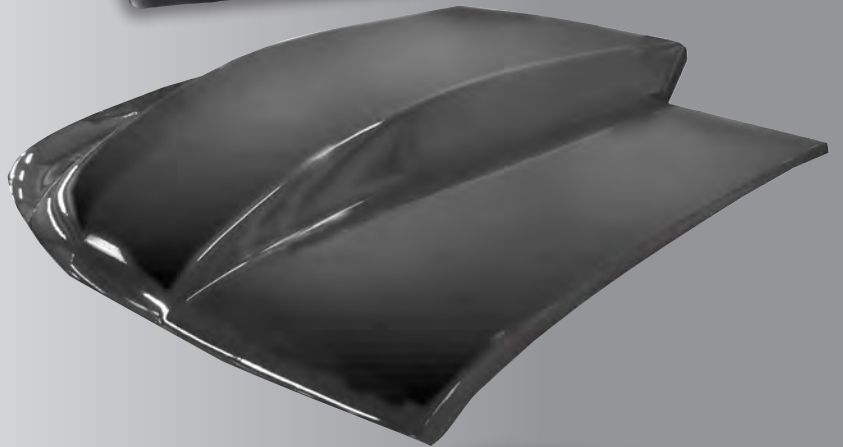
Show Series
Bolt-On #B-42104

Lift-Off #42104
Use #192 Fastener Kit



4" Cowl W/S Length Induction Hood

Lift-Off #42204
Use #192 Fastener Kit



6" Cowl Induction Hood

Lift-Off #42106
Use #192 Fastener Kit



'69-'72 Chevy / GMC Trucks

3" Cowl Induction Hood

Show Series
Bolt-On #B-44101



Rick Murray

'73-'80 Chevy / GMC Truck

3" Cowl Induction Hood

Show Series

Bolt-On #B-45201

Use #210 Low Tension
Hood Springs



4" Cowl Induction Hood

Show Series

Bolt-On #B-45204

Use #210 Low Tension
Hood Springs

Lift-Off #45204

Use #192 Fastener Kit



John Guinn



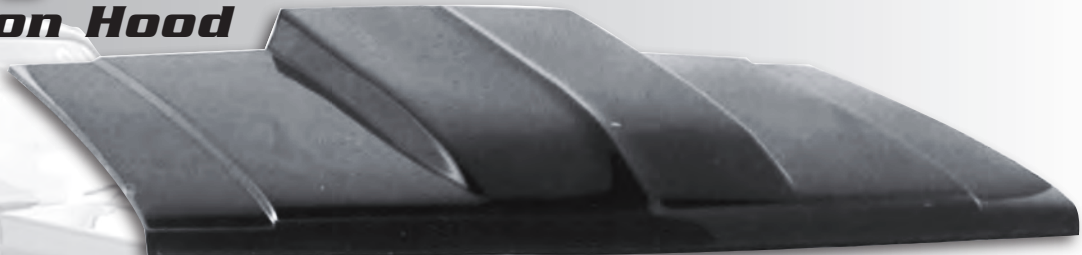
'81-'87 Chevy / GMC Truck

3" Cowl Induction Hood

Show Series

Bolt-On #B-46201

Also fits '81-'91
Suburban Blazer,
and 4-door Dually



4" Cowl Induction Hood

Show Series

Bolt-On #B-46204

Also fits '81-'91
Suburban Blazer,
and 4-door Dually

Lift-Off #46204

Use #192 Fastener Kit



'88-'98 Chevy / GMC Truck

3" Cowl Induction Hood

Show Series
Bolt-On #B-47201



4" Cowl Induction Hood

Show Series
Bolt-On #B-47204

Lift-Off #47204
Use #192 Fastener Kit



'99-'02 Chevy Silverado

3" Cowl Induction Hood

Show Series
Bolt-On #B-48101



3" Ram Air
Show Series
Bolt-On #B-48102



'99-'06 Sierra

3" Cowl Induction Hood

Show Series

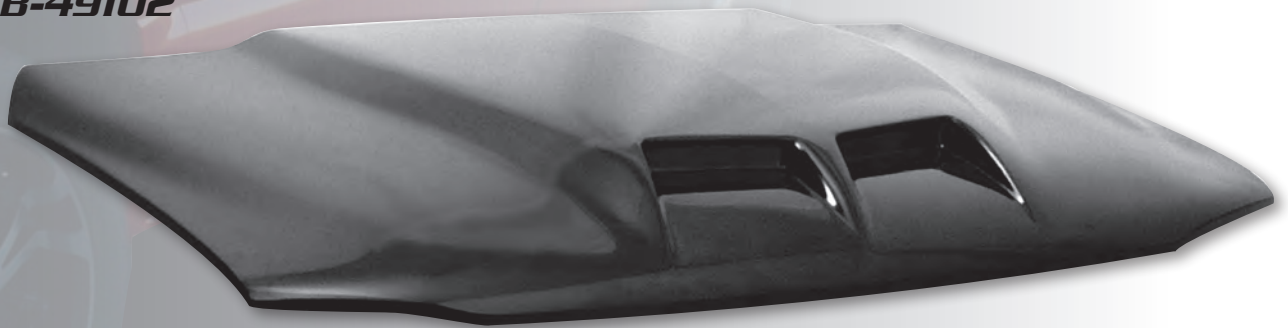
Bolt-On #B-49101



Ram Air Hood

Show Series

Bolt-On #B-49102



'03-'05 Chevy Silverado

'03-'04 HD Series

'03-'06 Avalanche

(Without Body Cladding)

3,, Cowl Induction Hood

Show Series

#B-50101



Robert Floyd



'07-'10 Chevy Silverado 1500

3" Cowl Induction Hood

Show Series

#B-51101



'97-'03 Ford F-150 & Explorer

3" Cowl Induction Hood

Show Series

#B-55201



Jeff Mould



'04 - '08 Ford F-150

3" Cowl Induction Hood

Show Series

#B-55202



NEW!

John Erhardt



'99-'07 Ford Super Duty, Excursion F-250, 350, 450

Ram Air Style

Show Series

#B-55250



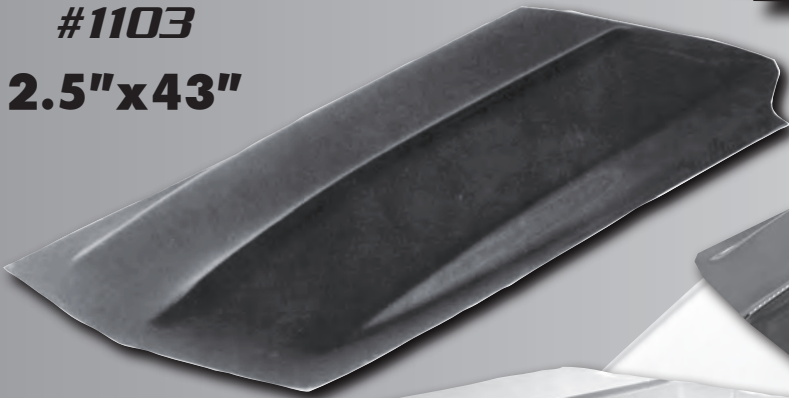
NEW!

Wayne Frazier

HARWOOD

**HARWOOD COWL SCOOPS
HAVE PROVEN TO BE THE
MOST POPULAR SCOOPS OF
ALL TIME.**

**#1103
2.5"x43"**



**#1107
4"x39"**



**#1114
4"x53.5"**



**#1116
6"x49"**



HARWOOD EXTRA LENGTH SCOOPS

**#1111
2"x53"**



**#1112
3.5"x54"**



*The Design Of The
#1111 #1112 and #1117
Have Proven Popular
On Cars With Longer Hoods.*

**#1117
7.5"x 53.5"**



HARWOOD SMOOTH TOP COWL SCOOPS

4"x50.5"
#1124



You Asked For It -- You Got It! Additional Height And Great Looks With The "Smooth Top" Design. Our Smooth Top Scoops Work For Most Newer Style Cars That Do Not Have The Ridge In The Center Of The Hood Like Some Camaro And Mustangs.

6"x51"
#1126



8"x46"
#1128



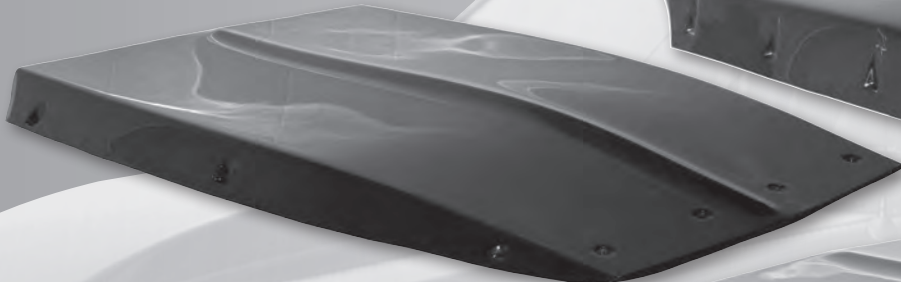
5"x51"
#1125



HARWOOD BOLT-ON COWL SCOOPS

BOLT-ON COWL SCOOPS INCLUDE STAINLESS STEEL MOUNTING HARDWARE AND INSTRUCTIONS

2.5"x39"
#4103



4"x48"
#4114



#4104
4"x39"



#4116
6"x45"



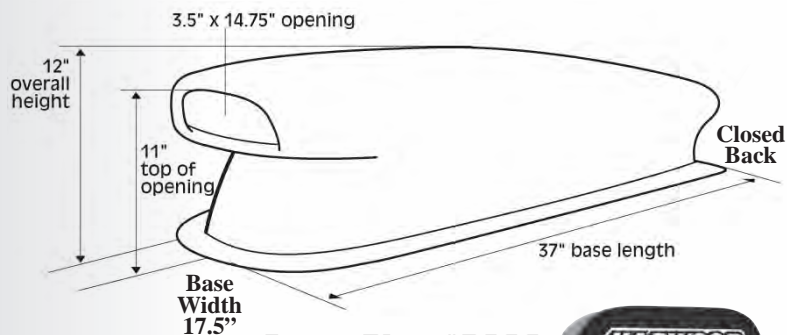
HARWOOD AERO SCOOPS

THROUGH THE YEARS HARWOOD HAS DEVELOPED THE WINNINGEST AERO SCOOPS IN THE INDUSTRY

#3160



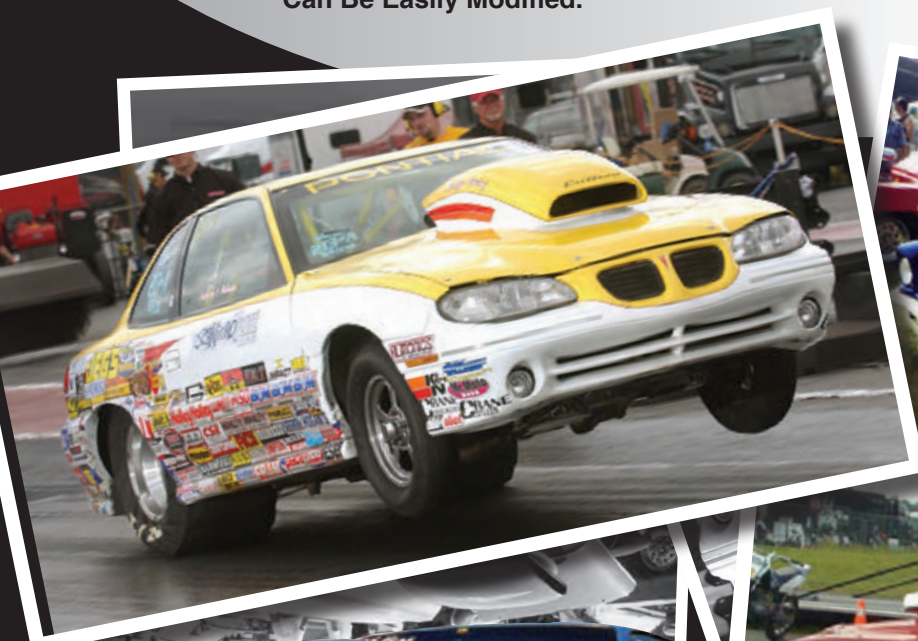
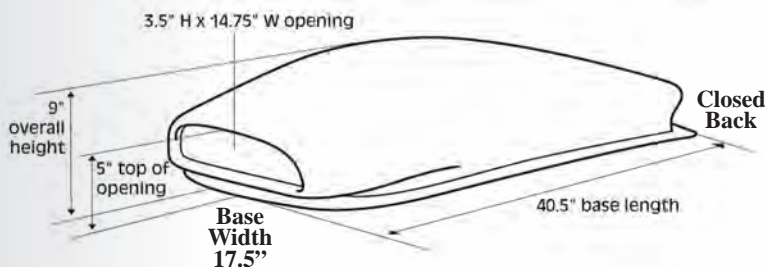
The #3160 is one of our most popular and successful Aero Scoops



#3165



A Popular Design In Super Stock Classes. Can Be Easily Modified.

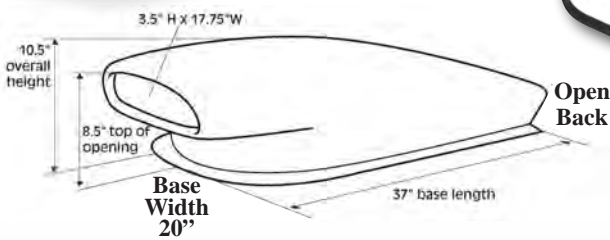




FULL SIZE • OPEN BACK • AERO SCOOPS

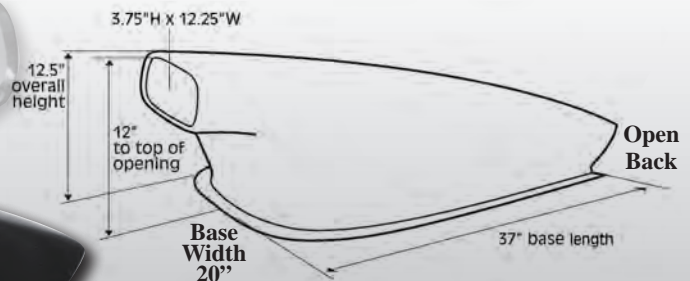
Trim/Fit to Windshield

#3168

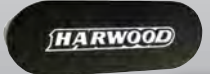


Scoop Plug #1999

When Extra Clearance Is Required Harwood Offers These **20 INCH WIDE BASE** Designs
#3181



Scoop Plug #2002



ON THE WATER OR ON THE TRACK

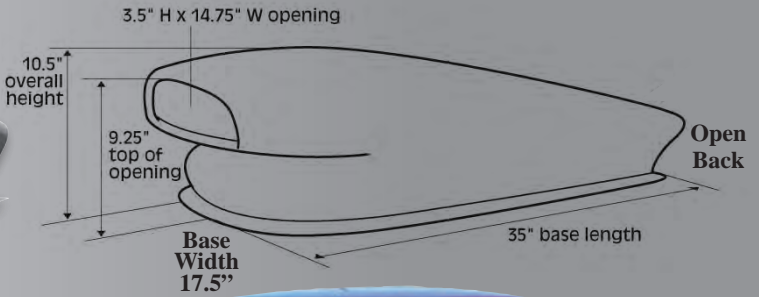


HARWOOD DOMINATES!

FULL SIZE • OPEN BACK • AERO SCOOPS

Trim/Fit to Windshield

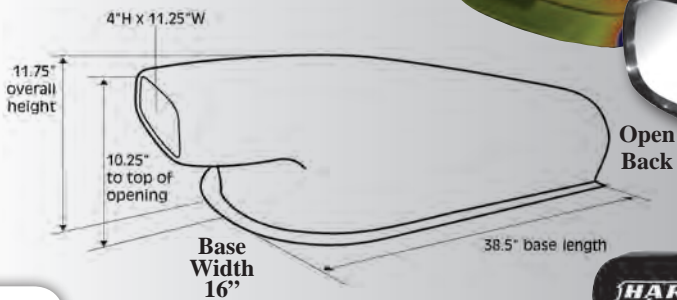
#3161



Scoop Plug #2000

#3180

Our Longest Scoop at 38.5"

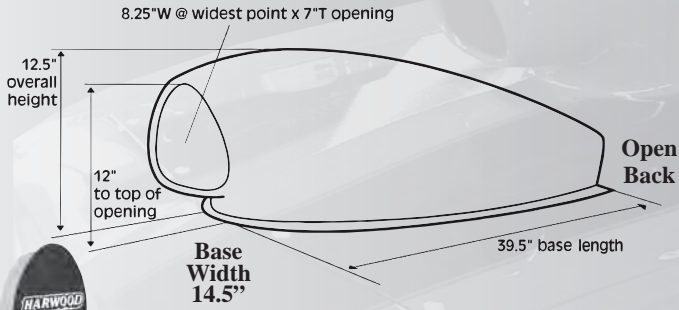


Scoop Plug #1998

FULL SIZE • OPEN BACK • AERO SCOOPS

Trim/Fit to Windshield

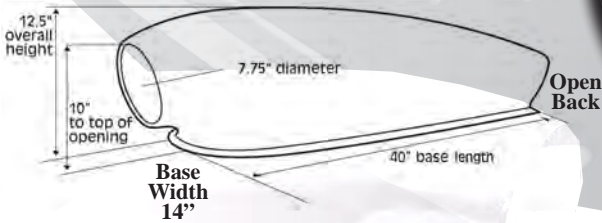
#3182



Scoop Plug #1996



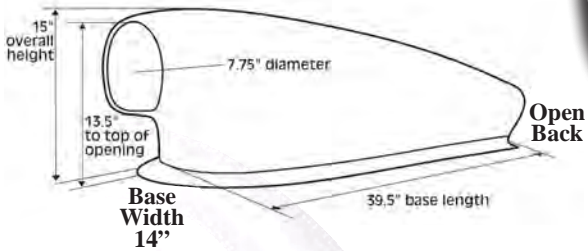
#3185



Scoop Plug #1994



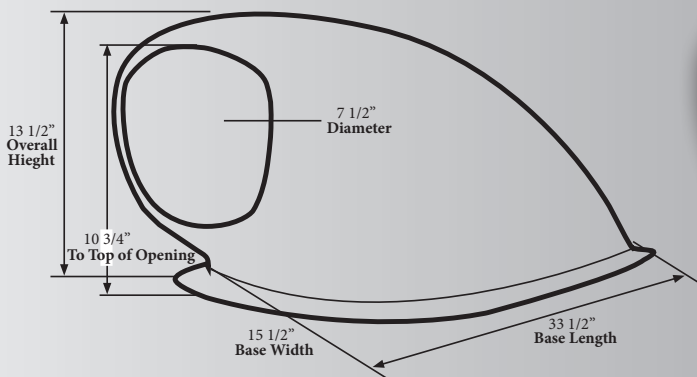
#3186



Scoop Plug #2003



#3187



HARWOOD MINI SCOOPS

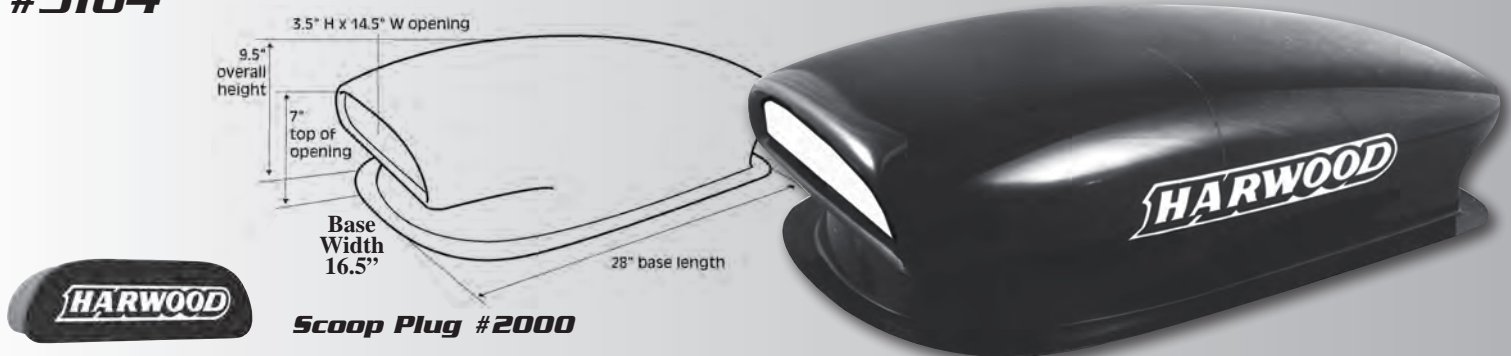
#3162



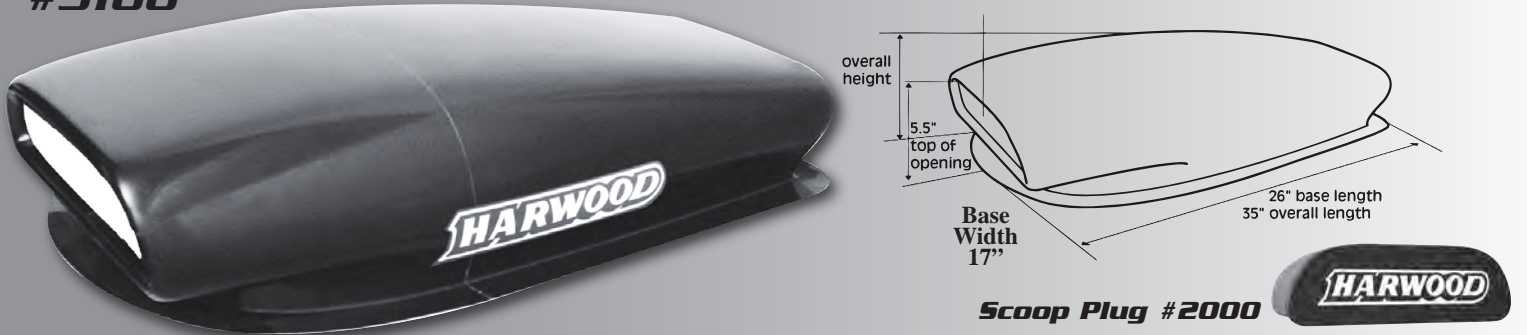
#3163



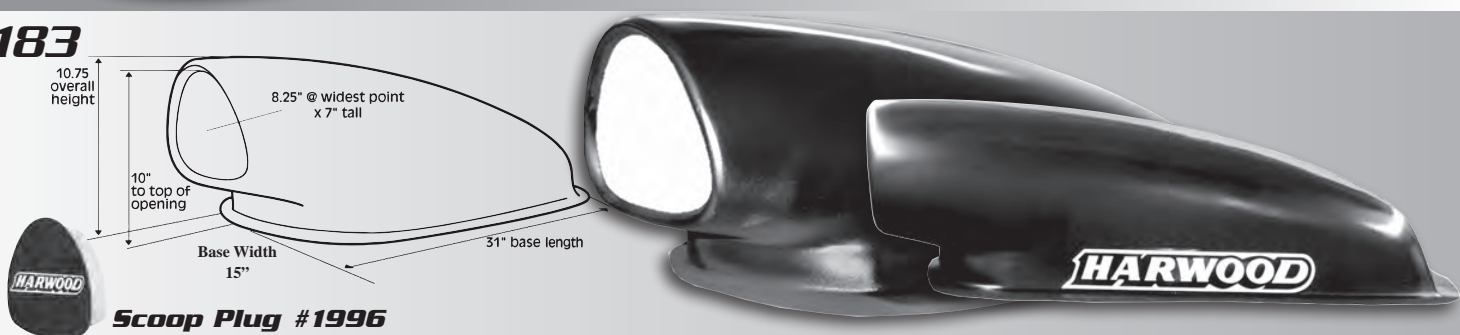
#3164



#3166

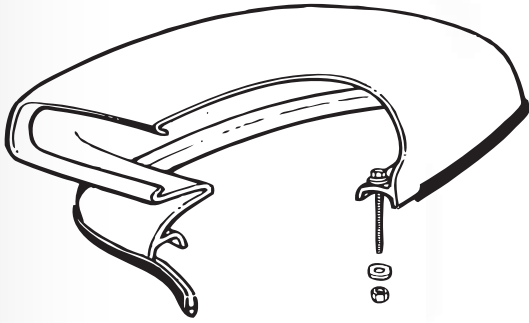


#3183

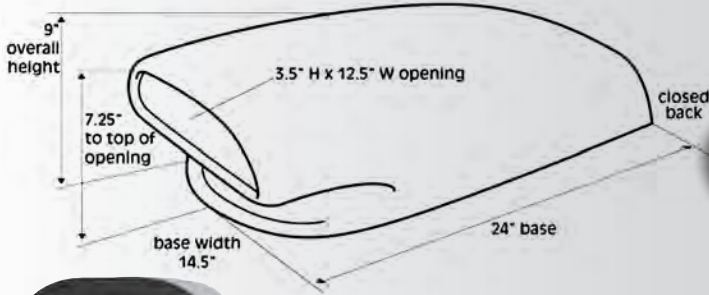


HARWOOD BOLT-ON AERO SCOOPS

INCLUDES ALL MOUNTING HARDWARE, RUBBER GASKETS AND INSTRUCTIONS

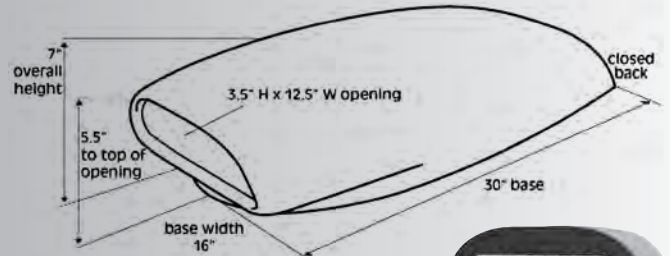


#4162



Scoop Plug #2001

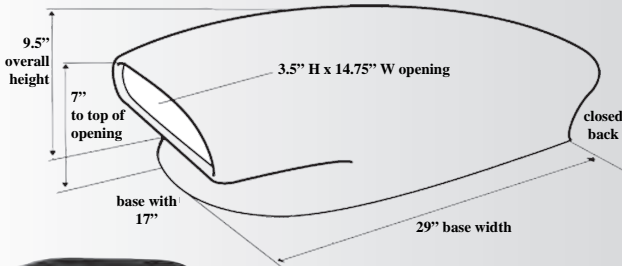
#4163



Scoop Plug #2001

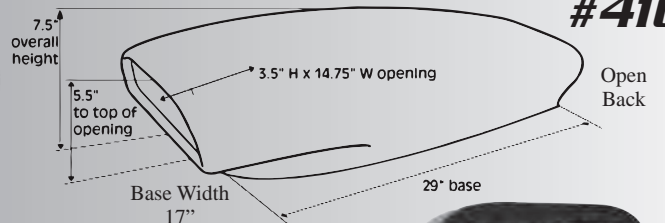


#4164



Scoop Plug #2000

#4166



Scoop Plug #2000

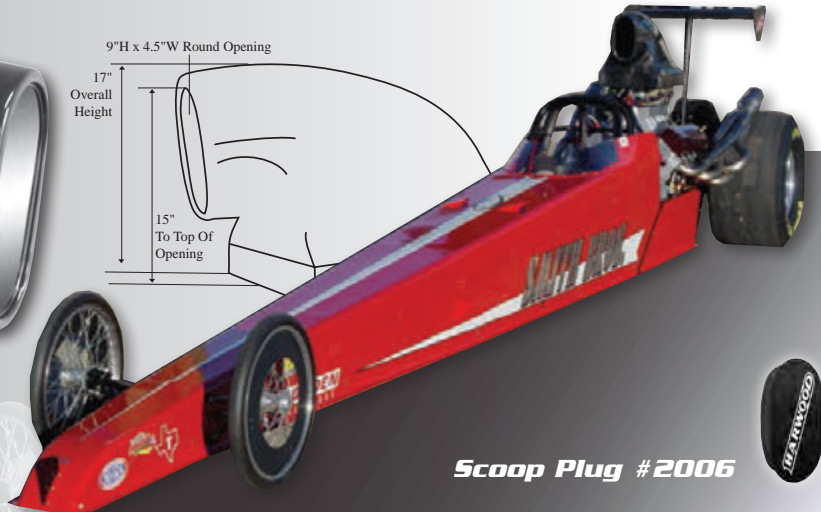
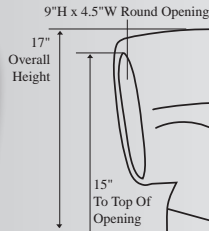


HARWOOD DRAGSTER SCOOPS

THE HARWOOD DRAGSTER AIR SCOOPS ARE THE 1ST CHOICE OF THE NATIONS TOP RACERS.

All standard scoop trays are built for scoop base dimensions of 13.75 wide by 22" long.

#3150



Scoop Plug #2006

#3153

3.5" H x 14.75" W Round Opening

12" Overall Height
11" to top of opening



Scoop Plug #2001

#3155

5.5" Round Opening

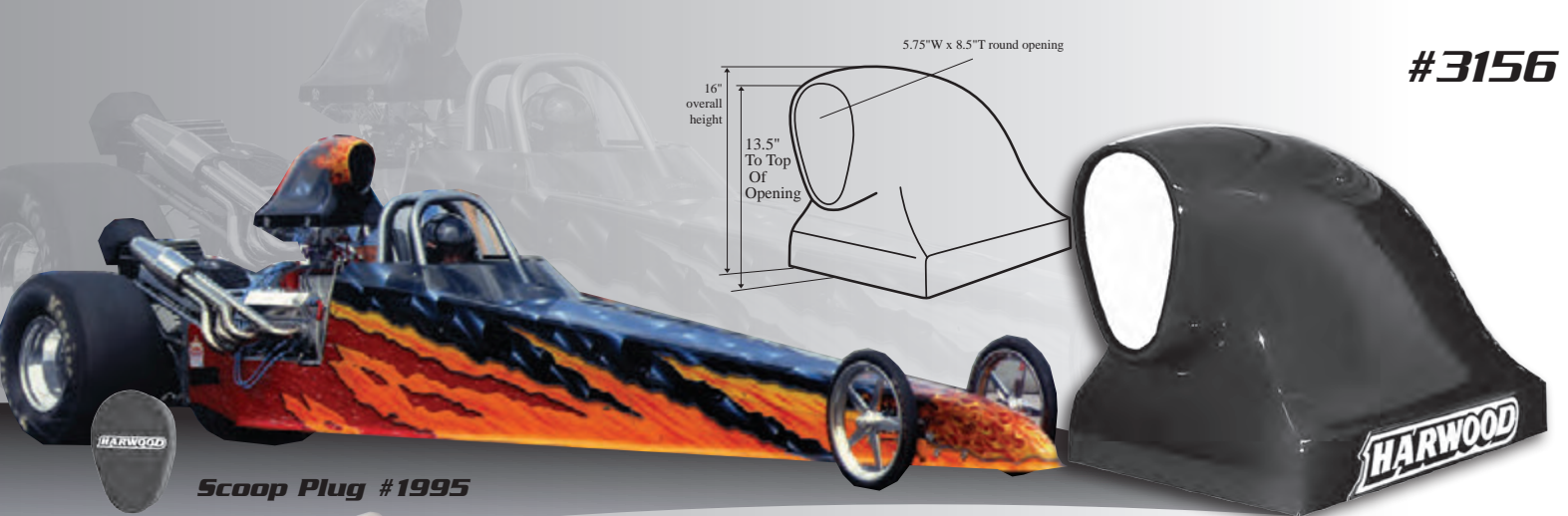
16.5" Overall Height
13.5" To Top Of Opening



Scoop Plug #1993

HARWOOD DRAGSTER SCOOPS

**USED BY THE SPORTS BEST RACERS.
THE WINNINGEST DRAGSTER AIR SCOOPS
ARE FROM HARWOOD.**



This advertisement features a dragster with a blue and orange flame paint job. A black scoop plug is shown on the left with the Harwood logo. To the right is a large black scoop with a white oval opening and the Harwood logo on its side. A technical diagram shows the scoop's dimensions: a 5.75" W x 8.5" T round opening, a 13.5" height to the top of the opening, and a 16" overall height.

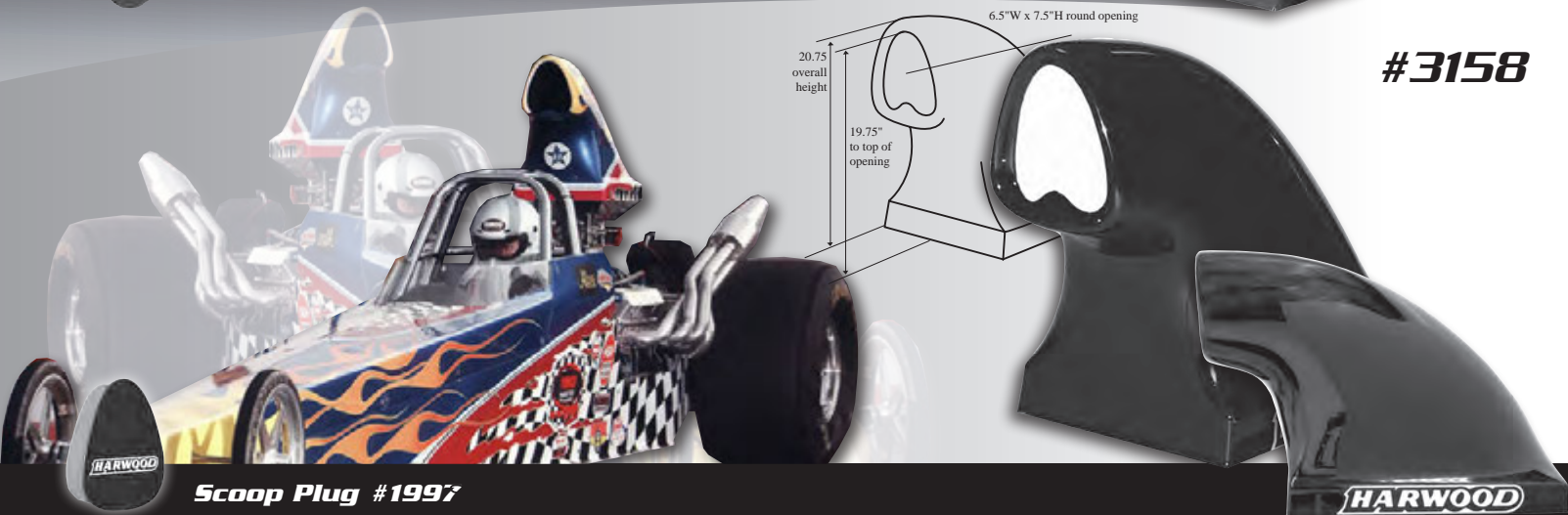
5.75" W x 8.5" T round opening

16" overall height

13.5" To Top Of Opening

#3156

Scoop Plug #1995



This advertisement features a dragster with a blue, orange, and white checkered paint job. A black scoop plug is shown on the left with the Harwood logo. To the right is a large black scoop with a white oval opening and the Harwood logo on its side. A technical diagram shows the scoop's dimensions: a 6.5" W x 7.5" H round opening, a 19.75" height to the top of the opening, and a 20.75" overall height.

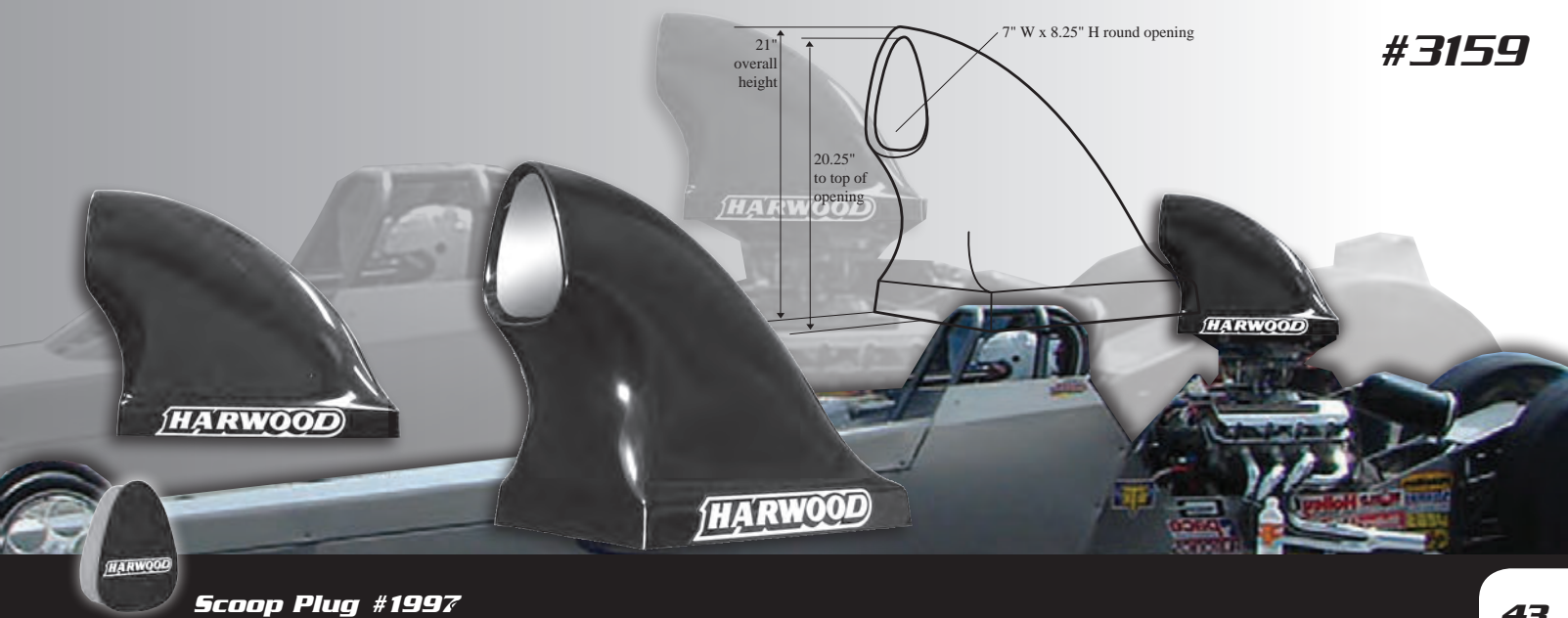
6.5" W x 7.5" H round opening

20.75 overall height

19.75" to top of opening

#3158

Scoop Plug #1997



This advertisement features a white dragster with a black scoop. A black scoop plug is shown on the left with the Harwood logo. To the right is a large black scoop with a white oval opening and the Harwood logo on its side. A technical diagram shows the scoop's dimensions: a 7" W x 8.25" H round opening, a 20.25" height to the top of the opening, and a 21" overall height.

21" overall height

20.25" to top of opening

7" W x 8.25" H round opening

#3159

Scoop Plug #1997

HARWOOD FRONT ENDS

'67-'68 Camaro

#10000



'69 Camaro

#10050



'78-'81 Camaro

#11000



'82-'92 Camaro IROC

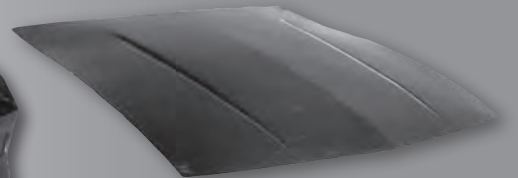
#12001

The #12001 is 4 inches longer than the stock Camaro between the door and the rear of the front fender opening. It can be trimmed to fit stock applications.



**Extended Length Hood
for #12001 Lift-Off #12091**

Use #192 Fastener Kit



'87-'93 MUSTANG

#26000

Stock Hood

Lift-Off #26300

Use #192 Fastener Kit



NEW!!



'67 Chevy II/Nova

#13000
Fits '66-'67



'68-'72 Chevy II/Nova

#14000
Fits '68-'74

'78-'87 Malibu
#23000

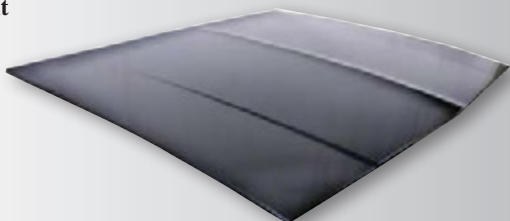
NEW!!



Stock Hood for #23000

Lift-Off #23100

Use #192 Fastener Kit



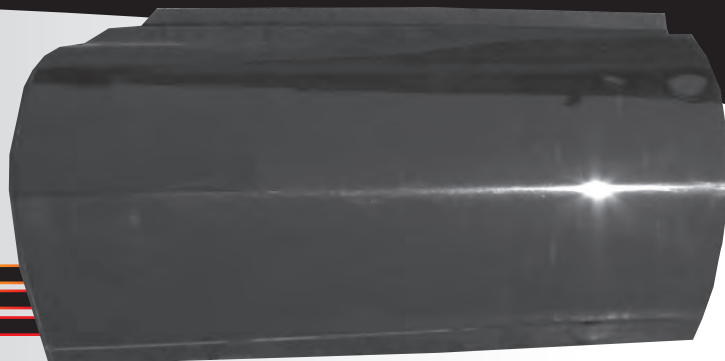
'82-'93 5-10

#41000

Camaro

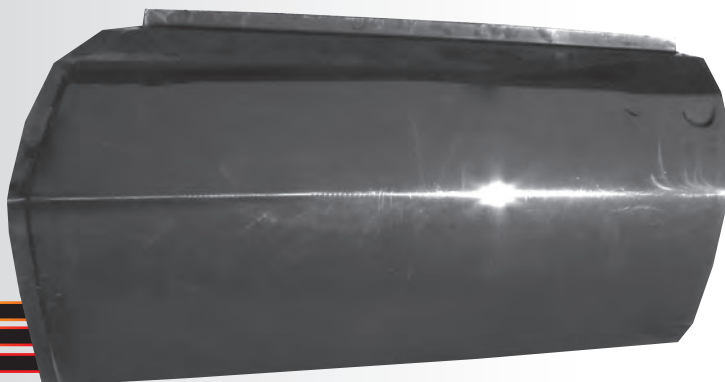
'67-'88

Driver Door #10010
Passenger #10011



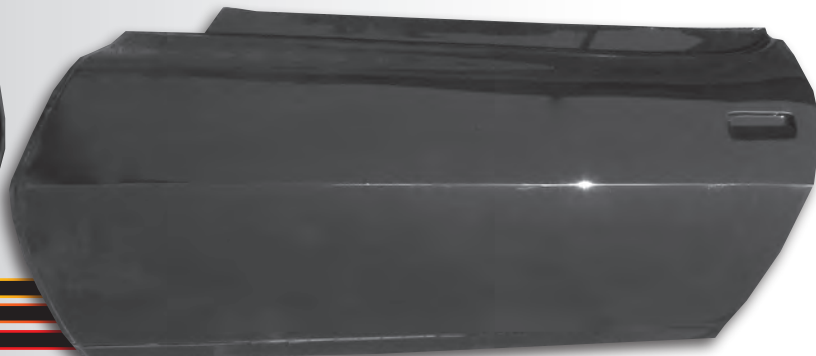
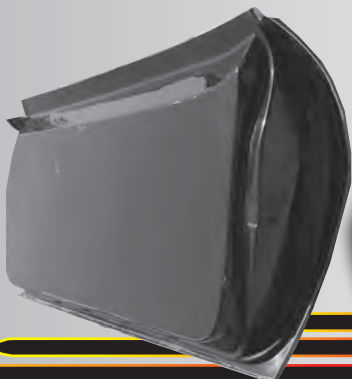
'69

Driver Door #10060
Passenger #10061



'70-'81

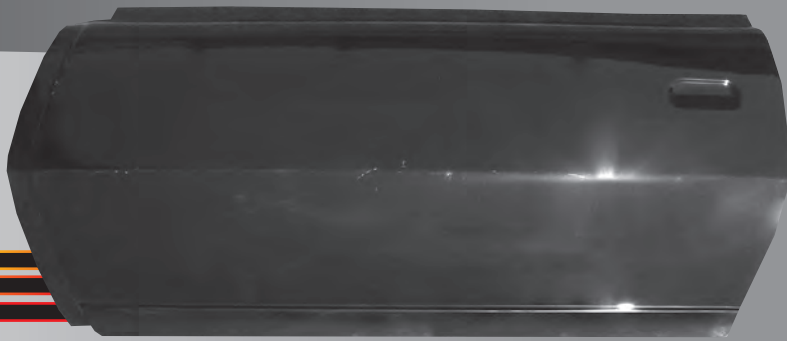
Driver Door #11010
Passenger #11011



Camaro IROC

'82-'92

Driver Door #12012
Passenger #12013



MALIBU

'78-'87

Driver Door #23010
Passenger #23011



Chevy II/Nova

'66-'67

Driver Door **#13010**
Passenger **#13011**
Hardtop
Only



Chevy II/Nova

'68-'74

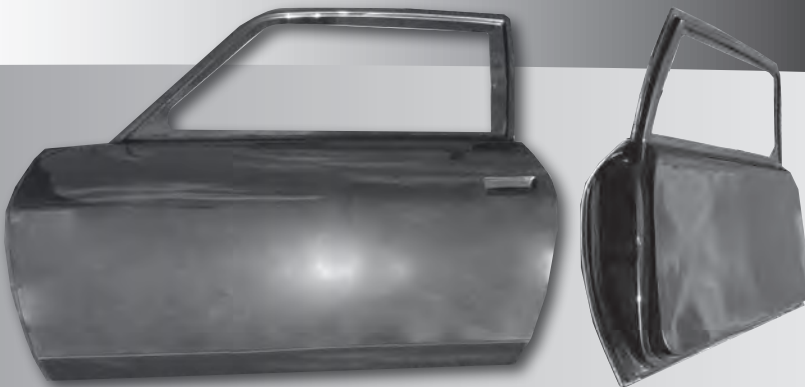
Driver Door **#14010**
Passenger **#14011**



Vega

'71-'77

Driver Door **#15010**
Passenger **#15011**

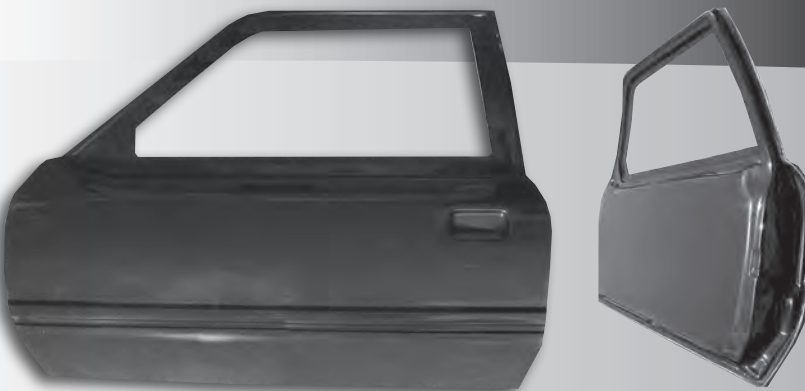


Hatchback Only

Mustang

'79-'93

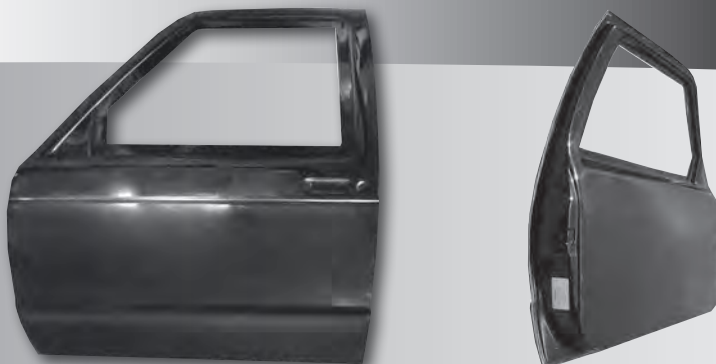
Driver Door **#26010**
Passenger **#26011**



Chevy S-10

'82-'93

Driver Door **#41010**
Passenger **#41011**



HARWOOD DECK LIDS

'67-'69 CAMARO / FIREBIRD

#10500 Lift-Off



'70-'81

#11500 Lift-Off



'82-'92

#12500 Lift-Off



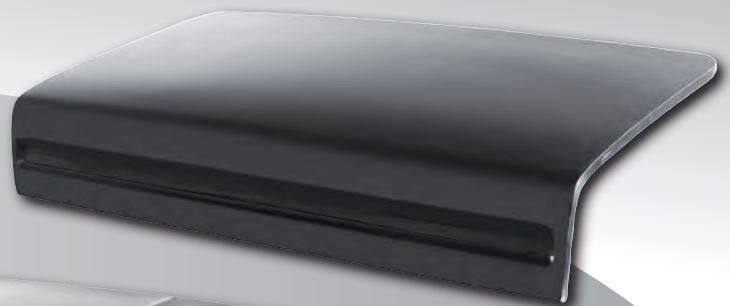
'62-'65

CHEVY II / NOVA

#13040 Lift-Off

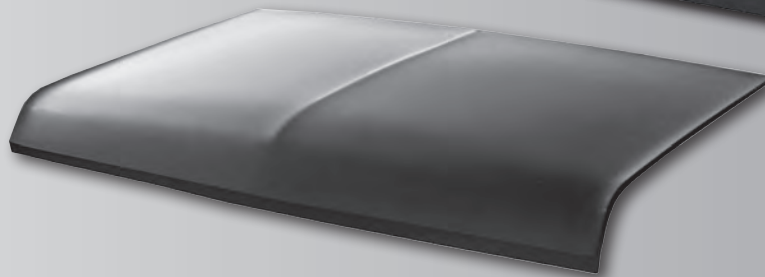
'66-'67

#13500 Lift-Off



'68-'74

#14500 Lift-Off
Non-Hatchback



CHEVELLE / MALIBU

'68-'72

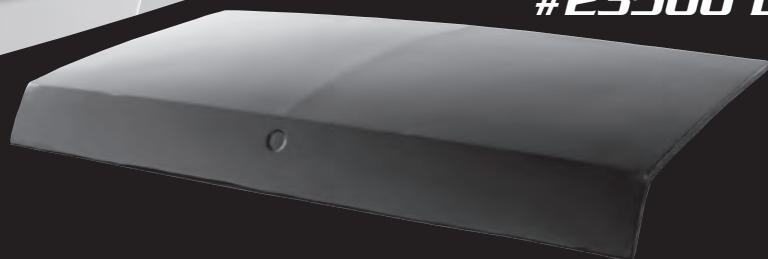
#22500 Lift-Off



MALIBU

'78-'83

#23500 Lift-Off



MUSTANG

'79-'93

**#26500 Lift-Off
Hatchback**



USE LEXAN
WINDOW
#26921-H WITH
MUSTANG
HATCHBACK

'79-'93

#B-26500

**Bolt-On
Hatchback**

'05-'08

#26504 Lift-Off



'79-'93



#26501

Notchback Coupe

ONE PIECE

REAR DECK LID WITH SPOILER

CAMARO

2010 - 2013

Bolt-On #B-12501



FINISHED UNDERSIDE
Accepts Factory Hardware
& Upholstery

HARWOOD BUMPERS

'67-'68 Camaro

#10550 Front



#10560 Rear



'69 Camaro

#10570 Front



#10580 Rear



'78-'81 Camaro

#11070 Rear Clip



'62-'65 Chevy II / Nova

#13050 Front

'65 STYLE

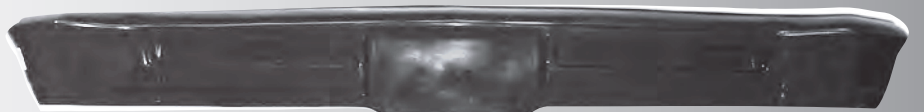


#13060 Rear

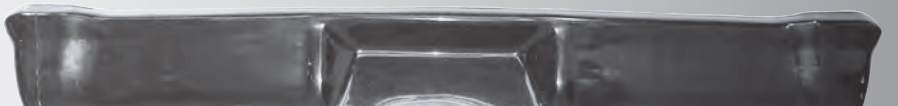


'66-'67 Chevy II / Nova

#13550 Rear



#13560 Rear



HARWOOD BUMPERS

'87-'93 MUSTANG

#26050 FRONT BUMPER CLIP

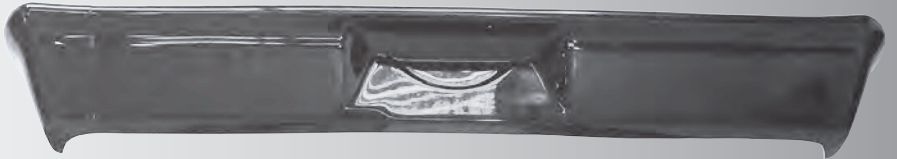


'68-'72 Nova

#14550 Front



#14560 Rear



'74-'77 Vega

#15550 Front



#15560 Rear



'71-'72 Chevelle, Malibu, El Camino

#22550 Front

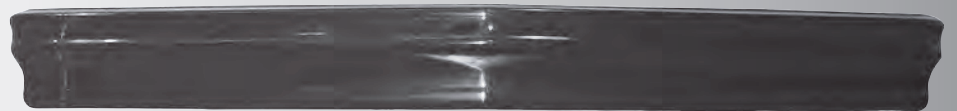


#22560 Rear

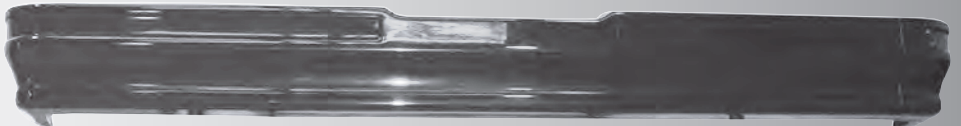


'78-'87 Malibu, El Camino

#23550 Front

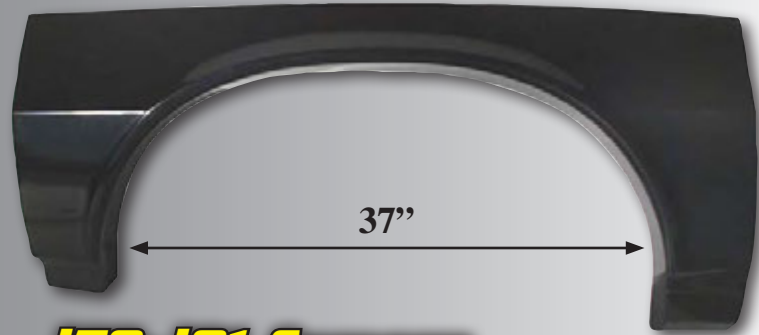


#23560 Rear



EXTENDED WHEEL WELL OPENINGS

'67-'88 Camaro
(Pair) #10700



'69 Camaro
(Pair) #10710



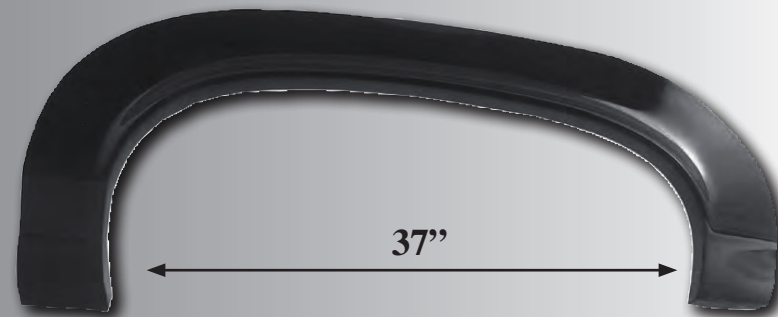
'70-'81 Camaro
(Pair) #11700



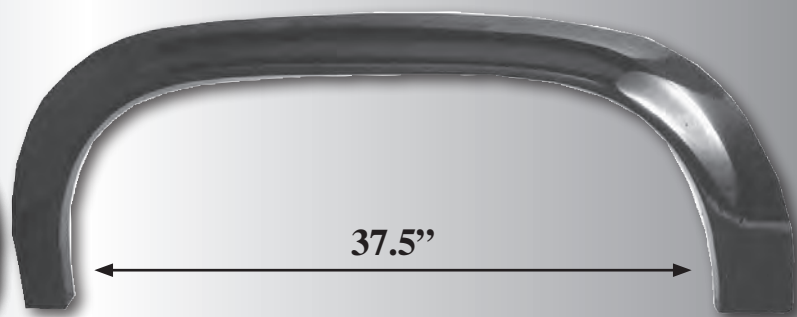
'66-'67 Chevy II / Nova
(Pair) #13700



'68-'74 Nova
(Pair) #14700



'71-'77 Vega
(Pair) #15700



'79-'93 Mustang
(Pair) #26700



'05-'08 Mustang
(Pair) #26703



POLYCARBONATE WINDOWS

Safety And Reduced Weight Are Two Reasons Racers Prefer HARWOOD Polycarbonate Windows. Precut Harwood Polycarbonate windows are available in stock size & oversize.



Stock size allows the use of factory window trim.
(As shown above)



Oversize (approximately 1/2 inch.) eliminates stock trim for a flush mount, smooth fit.
(As shown above)
Some light trimming maybe necessary.

All Windshields Are Scratch Resistant Marguard 1/8 Or 3/16 Thickness.



All Side And Rear Windows Are Standard 1/8 Inch Thick Polycarbonate.



Harwood cuts all Polycarbonate windows to order. Specify with each order whether Polycarbonate is to be stock size or oversize "flush mount".

All Polycarbonate order are shipped the next day.

Polycarbonate windows are non-returnable.

Installation tips & guidelines included with each order.

'67 - '69 CAMARO / FIREBIRD

- 10913** 67-69 Windshield, 1/8" Margard
- 10914** 67-69 Windshield, 3/16" Margard
- 10921** 67-69 Rear Window, 1/8" Std.
- 10931** 67-69 Door Window, 1/8" Std.-Pr.
- 10941** 67-69 Qtr. Window, 1/8" Std.-Pr.

'70 - '81 CAMARO / FIREBIRD

- 11913** 70-81 Windshield, 1/8" Margard
- 11914** 70-81 Windshield, 3/16" Margard
- 11921** 70-74 Rear Window, 1/8" Std.
- 11925** 75-81 Rear Window, 1/8" Std.
- 11931** 70-81 Door Window, 1/8" Std.-Pr.

'82 - '92 CAMARO / FIREBIRD

- 12913** 82-92 Windshield, 1/8" Margard
- 12914** 82-92 Windshield, 3/16" Margard
- 12921** 82-92 Molded Rear Window, 1/8" Std.
- 12931** 82-92 Door Window, 1/8" Std.-Pr.

'62 - '67 CHEVY II / NOVA (HARDTOP)

- 13913** 62-67 Windshield, 1/8" Margard
- 13914** 62-67 Windshield, 3/16" Margard
- 13921** 66-67 Rear Window, 1/8" Std.
- 13925** 62-65 Rear Window, 1/8" Std.
- 13931** 66-67 Door Window, 1/8" Std.-Pr.
- 13935** 62-65 Door Window, 1/8" Std.-Pr.
- 13941** 66-67 Qtr Window, 1/8" Std.-Pr.
- 13945** 62-65 Qtr Window, 1/8" Std.-Pr.

'68 - '74 CHEVY II / NOVA

- 14913** 68-74 Windshield, 1/8" Margard
- 14914** 68-74 Windshield, 3/16" Margard
- 14921** 68-74 Rear Window, 1/8" Std.
- 14931** 68-74 Door Window, 1/8" Std.-Pr.
- 14941** 68-72 Qtr Window, 1/8" Std.-Pr.

'71 - '77 VEGA (HATCHBACK)

- 15913** 71-77 Windshield, 1/8" Margard
- 15914** 71-77 Windshield, 3/16" Margard
- 15921** 71-77 Rear Window, 1/8" Std.
- 15931** 71-77 Door Window, 1/8" Std.-Pr.
- 15941** 71-77 Qtr Window, 1/8" Std.-Pr.

'68 - '72 CHEVELLE / MALIBU (HARDTOP)

- 22913** 68-72 Windshield, 1/8" Margard
- 22914** 68-72 Windshield, 3/16" Margard
- 22921** 68-72 Rear Window, 1/8" Std.
- 22931** 68-72 Door Window, 1/8" Std.-Pr.
- 22941** 68-69 Qtr Window, 1/8" Std.-Pr.
- 22945** 70-72 Qtr Window, 1/8" Std.-Pr.

'78 - '83 MALIBU

- 23913** 78-83 Windshield, 1/8" Margard
- 23914** 78-83 Windshield, 3/16" Margard
- 23921** 78-83 Rear Window, 1/8" Std.
- 23931** 78-83 Door Window, 1/8" Std.-Pr.
- 23941** 78-83 Qtr Window, 1/8" Std.-Pr.

'79 - '93 MUSTANG (COUPE)

- 26813** 79-93 Windshield, 1/8" Margard
- 26814** 79-93 Windshield, 3/16" Margard
- 26825** 79-93 Rear Window, 1/8" Std.
- 26831** 79-93 Door Window, 1/8" Std. Pr.
- 26841** 79-93 Qtr Window, 1/8" Std.- Pr.

'79 - '93 MUSTANG (HATCHBACK)

- 26913** 79-93 Windshield, 1/8" Margard
- 26914** 79-93 Windshield, 3/16" Margard
- 26921** 79-93 Rear Window, 1/8" Std.
- 26921H** 79-93 Rear Window, 1/8" Std.
- 26931** 79-93 Door Window, 1/8" Std. Pr.
- 26941** 79-93 Qtr Window, 1/8" Std.- Pr.

'81 - '88 MONTE CARLO

- 29913** 81-88 Windshield, 1/8" Margard
- 29914** 81-88 Windshield, 3/16" Margard
- 29921** 81-88 Rear Window, 1/8" Std.
- 29931** 81-88 Door Window, 1/8" Std. Pr.
- 29941** 81-88 Qtr Window, 1/8" Std. Pr.

'82 - '93 GM S-10/S-15 TRUCK

- 41913** 82-93 Windshield, 1/8" Margard
- 41914** 82-93 Windshield, 3/16" Margard
- 41921** 82-93 Rear Window, 1/8" Std.
- 41931** 82-93 Door Window, 1/8" Std. Pr.
- 41941** 82-93 Qtr Window, 1/8" Std., Ext. Cab-Pr.

PRE-SIZED BLANK WINDOWS

- LB-911** 1/8" Std. 30"x60" Flat Sheet
- LB-913** 1/8" Margard, 30"x60" Flat Sheet
- LB-914** 3/16" Margard, 30"x60" Flat Sheet
- LB-931** 1/8" Std, 24"x48" Flat Sheet
- LB-933** 1/8" Margard, 24"x48" Flat Sheet

NOW AVAILABLE!

HARWOOD

GREY TINTED!

POLYCARBONATE WINDOWS

Safety And Reduced Weight Are Two Reasons Racers Prefer
HARWOOD POLYCARBONATE Windows.

Precut Harwood Polycarbonate windows
are available in stock size & oversize.

'67 - '69 CAMARO / FIREBIRD

- 10921-T** 67-69 Rear Window, 1/8" Std.
- 10931-T** 67-69 Door Window, 1/8" Std.-Pr.
- 10941-T** 67-69 Qtr. Window, 1/8" Std.-Pr.

'70 - '81 CAMARO / FIREBIRD

- 11921-T** 70-74 Rear Window, 1/8" Std.
- 11925-T** 75-81 Rear Window, 1/8" Std.
- 11931-T** 70-81 Door Window, 1/8" Std.-Pr.

'82 - '92 CAMARO / FIREBIRD

- 12931-T** 82-92 Door Window, 1/8" Std.-Pr.

'62 - '67 CHEVY II / NOVA (HARDTOP)

- 13921-T** 66-67 Rear Window, 1/8" Std.
- 13925-T** 62-65 Rear Window, 1/8" Std.
- 13931-T** 66-67 Door Window, 1/8" Std.-Pr.
- 13935-T** 62-65 Door Window, 1/8" Std.-Pr.
- 13941-T** 66-67 Qtr Window, 1/8" Std.-Pr.
- 13945-T** 62-65 Qtr Window, 1/8" Std.-Pr.

'68 - '74 CHEVY II / NOVA

- 14921-T** 68-74 Rear Window, 1/8" Std.
- 14931-T** 68-74 Door Window, 1/8" Std.-Pr.
- 14941-T** 68-72 Qtr Window, 1/8" Std.-Pr.

'71 - '77 VEGA (HATCHBACK)

- 15921-T** 71-77 Rear Window, 1/8" Std.
- 15931-T** 71-77 Door Window, 1/8" Std.-Pr.
- 15941-T** 71-77 Qtr Window, 1/8" Std.-Pr.

'68 - '72 CHEVELLE / MALIBU (HARDTOP)

- 22921-T** 68-72 Rear Window, 1/8" Std.
- 22931-T** 68-72 Door Window, 1/8" Std.-Pr.
- 22941-T** 68-69 Qtr Window, 1/8" Std.-Pr.
- 22945-T** 70-72 Qtr Window, 1/8" Std.-Pr.

'78 - '83 MALIBU

- 23921-T** 78-83 Rear Window, 1/8" Std.
- 23931-T** 78-83 Door Window, 1/8" Std.-Pr.
- 23941-T** 78-83 Qtr Window, 1/8" Std.-Pr.

'79 - '93 MUSTANG (COUPE)

- 26825-T** 79-93 Rear Window, 1/8" Std.
- 26831-T** 79-93 Door Window, 1/8" Std. Pr.
- 26841-T** 79-93 Qtr Window, 1/8" Std.- Pr.

'79 - '93 MUSTANG (HATCHBACK)

- 26921-T** 79-93 Rear Window, 1/8" Std.
- 26921H-T** 79-93 Rear Window, 1/8" Std.
- 26931-T** 79-93 Door Window, 1/8" Std. Pr.
- 26941-T** 79-93 Qtr Window, 1/8" Std.- Pr.

'81 - '88 MONTE CARLO

- 29921-T** 81-88 Rear Window, 1/8" Std.
- 29931-T** 81-88 Door Window, 1/8" Std. Pr.
- 29941-T** 81-88 Qtr Window, 1/8" Std. Pr.

'82 - '93 GM S-10/S-15 TRUCK

- 41921-T** 82-93 Rear Window, 1/8" Std.
- 41931-T** 82-93 Door Window, 1/8" Std. Pr.
- 41941-T** 82-93 Qtr Window, 1/8" Std., Ext. Cab-Pr.

PRE-SIZED BLANK WINDOWS

- LB-911-T** 1/8" Std. 30"x60" Flat Sheet
- LB-931-T** 1/8" Std, 24"x48" Flat Sheet