

2018 TRAILER/ EQUESTRIAN

OEM Catalog



LIPPERT
COMPONENTS®





Your Journey
Begins Here®





AXLES/SUSPENSION/ CHASSIS 06

CHASSIS

Total Product Integration	7
---------------------------------	---

AXLES

Trailer Axle Solutions	8-10
Hybrid Spring Axle.....	11
Axle Replacement Parts	11-17

SUSPENSION

Road Armor™ Equalizer	18
Equa-Flex® Rubberized Suspension Enhancement.....	18
Forward Self-Adjusting Brakes	19

CARGO/STORAGE 22

Kwikkee Cargo Trays.....	23
--------------------------	----

DOORS 24

Square Entry Doors	25
Entry Doors	26-27
Access & Baggage Doors	28-29
Aqua Shed Baggage Door	30
Composite Slam Latch Baggage Door.....	31

ELECTRONICS 32

OneControl®.....	33-37
------------------	-------

FURNITURE 38

THOMAS PAYNE® COLLECTION

Modular Theater Seating.....	40
Destination Tri-Fold Sofa	41
Recliners.....	42
Jackknife Sofas.....	43
Euro Recliner Chair.....	43

KITCHEN/BATH/ FRESH WATER 44

BETTER BATH®

Bath Tubs & Surrounds.....	45
Shower Pans & Surrounds	46
Sinks & Sink Covers	47

FRESH WATER

Faucets.....	48
Flow Max® Fresh Water Pump	49

LEVELING/STABILIZATION 50

AUTOMATIC LEVELING SYSTEMS

Level Up®	51
-----------------	----

JACKS

Smart Jack™	52
Power Tongue Jack	53
Manual Stabilizer Jacks.....	54
Sidewinder Jack	55

MATTRESSES/BEDDING
56

DENVER MATTRESS® RV COLLECTION

Mattresses.....57
Bedding.....58

MATTRESSES & BUNK MATS

Dreamscape Series59
iRelax® Sleep Systems60
Evergreen Performance Core.....60
Ocean Blue Mattress.....61
iCool® Gel Memory Foam Mattress61
Bunk Mats.....62
Teddy Bear Bunk Mattress & Cover.....63

SLIDE-OUT MECHANISMS
64

FAST Track In-Wall Slide65
In-Wall® Slide-Out66
SlimRack® In-Wall Slide-Out67
Through Frame Slide-Out..... 68-69

SOLERA® AWNINGS & ACCESSORIES
70

Smart Arm Power Awning.....72
18V Power Awning73
12V Power Awning74
XL 12V Power Awning75
Hybrid Awning.....76
Classic Awning.....77
Solera Sliders78
Solera Awnbrella™79
Solera Universal Slider Fabrics79
Solera Upgrades.....80
Solera Universal Patio Fabrics81
Solera Arm and Vinyl Color Options82
Window Awnings83

STEPS
84

SolidStep® 85-86
Tread Lite Power Step87
Project 2000 Single Slide Step.....88
Kwikkee® Power Steps.....89

TOWING
90

PIN BOXES & ACCESSORIES

Flex Air® Pin Box.....91
Air Ride™ Pin Box.....92
Rota-Flex Pin Box.....93
Goose Box™ by Reese®94
Turning Point® Pin Box95

WINDOWS
96

3000 Series Bonded Windows.....97
2000 Series SV Windows98
8800 Series SV Windows99
8600 Dual Pane Slider100
Horse Trailer Windows..... 101-103

CONNECT WITH LCI..... 104

A close-up photograph of a truck axle hub assembly, showing the hub, several bolts, and a central nut. The image is overlaid with a semi-transparent blue shape that contains text and a yellow arrow. The background shows other similar axle components, slightly out of focus.

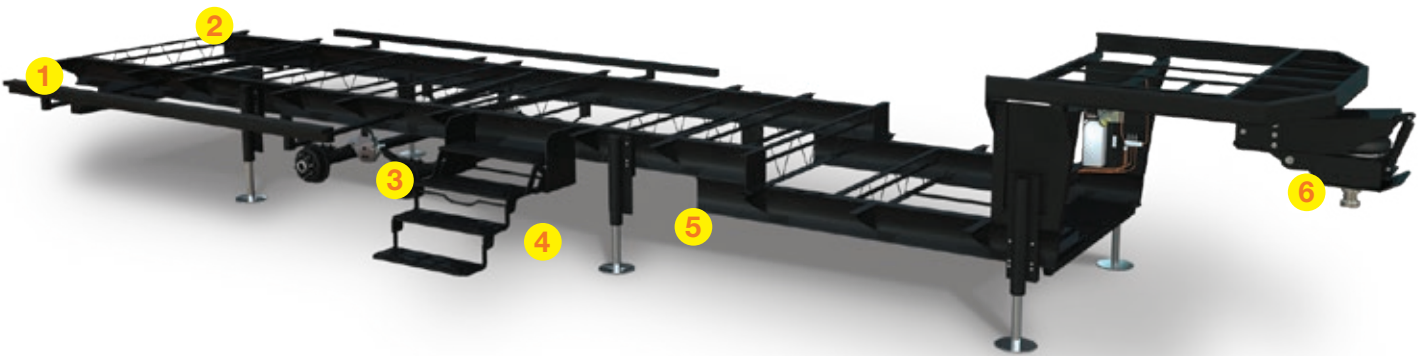
AXLES/ SUSPENSION/ CHASSIS



TOTAL PRODUCT INTEGRATION

We know the trailer market like no one else because we've been designing and manufacturing complete chassis systems for more than 55 years. Our state-of-the-art design process and durability testing ensures premium quality for all our chassis products for the long haul.

- Quality chassis systems for more than 55 years
- Advanced design and testing technology
- Complete chassis system works together in harmony
- Experienced chassis engineers and manufacturing team
- Comprehensive customer service



- 1** We engineer our own slide mechanisms and install them during frame construction.



- 2** We've integrated hitch receivers into our frames allowing you to tow along additional trailers, ATVs or small watercraft — up to 3,000-pound towing capacity.



- 3** We design our suspension enhancement products to prevent stress to the frame, giving our customers a better, longer-lasting product.



- 4** We engineer our steps to fit best with our chassis for easy use and storage. Our universal step outriggers fit all LCI steps, so replacement is easy.



- 5** We design all LCI leveling systems to promote chassis integrity. Our aluminum leveling jacks move in pairs, ensuring the chassis won't twist or bend during leveling.



- 6** We have developed several Trailair pin box solutions that prevent towing stress and prevent wear and tear to the chassis.

TRAILER AXLE SOLUTIONS

Lippert Components axles always take you farther. Our high tech robotic welders ensure the highest precision and quality on every component. We offer a full line of reliable spring, torsion and heavy-duty axles to meet your unique specifications. Every one of our trailer axles boasts an impressive list of standard features including robotic welds, waterproof connectors on wiring and black powder coating.

Our state-of-art manufacturing equipment and experienced axle professionals ensure that every component meets your custom specifications and our high standards through rigorous testing.



Industry Leading Limited Axle Warranty



spring axles
6
year
warranty

torsion axles
11
year
warranty



Starting January 1, 2017, Lippert Components now offers the industry's leading limited axle warranty:

- Limited 1 Year Warranty – grease and oil seals for all axles
- Limited 6 Year Warranty – spring axles and suspension systems
- Limited 11 Year Warranty – torsion axles



PREMIUM BLACK
POWDER-COAT
FINISH



ZINC-PLATED
HARDWARE



ASSEMBLED
IN THE USA



WATERPROOF
ELECTRICAL
CONNECTIONS



INTEGRATED
ONE-PIECE SPINDLE
AND FLANGE

TRAILER AXLE SOLUTIONS

Spring Axles

- 2,000 – 16,000-pound spring axle capacities
- 2,000 – 7,000-pound spring idler axles
- CSA certification on all 2,000 – 7,000 pound axles
- Integrated, one-piece spindle flange
- Complete axle assembly and component traceability and serialization
- Single, tandem or triple axle assemblies with standard or upgraded equalized suspension available
- Slipper or double eye leaf spring suspension
- Rust-resistant powder-coated axle tubing
- Waterproof connections on all electrical wiring
- Straight or drop spindles
- Electric, hydraulic, hydraulic free-backing and hydraulic disc brakes available
- Forward self-adjusting brakes available on 3.5K – 16K
- Super lube hubs and bearing lubrication option standard on 8K (spring axle)
- Oil bath option 7K – 16K



Square Pattern

Diamond Pattern

Torsion Axles


- 2,000 – 10,000-pound torsion axle capacities (square bracket orientation)
- 2,000 – 7,000-pound torsion axle capacities (diamond bracket orientation)
- 2,000 – 7,000-pound torsion idler axles
- Rubberized torsion beam for a quiet, smooth ride
- Requires less maintenance than spring axles
- Rubber cords absorb road shock and vibrations
- Square and diamond orientation available
- Various starting angles to control trailer height
- Independent wheel suspension
- CSA certification on all 2,000 – 7,000-pound axles
- Complete axle assembly and component traceability and serialization on all axles
- Single and tandem axle assemblies
- Rust-resistant powder-coated axle tubing
- Waterproof connections on all electrical wiring
- Electric, hydraulic, hydraulic free-backing and hydraulic disc brakes available
- Forward self-adjusting brakes available on 3.5K – 10K
- Super lube hubs and bearing lubrication option

10K, 12K & 16K Dual Wheel Axles

- 2,000 – 16,000-pound spring axle capacities
- Integrated, one-piece spindle flange
- Complete axle assembly and component traceability and serialization on all axles
- Single, tandem or triple axle assemblies with standard or upgraded equalized suspension available
- Slipper suspension
- Rust-resistant powder-coated axle tubing
- Electric, hydraulic drum & hydraulic disc brakes available
- Forward self-adjusting brakes available
- Oil bath standard



TRAILER AXLE SOLUTIONS

Features & Benefits		COMPETITOR A
Powder-coated	Standard	n/a
Waterproof connectors on all brake wiring	Standard	n/a
Zinc-plated hardware for rust prevention	Standard	option
CSA certification on all brakes on 2K – 7K axles	Standard	standard
Integrated one-piece spindle and flange for improved alignment and strength	Standard	n/a
Weld quality verified using UT (Ultrasound technology)	Standard	n/a
DC electric nut runner with recordable torque readings	Standard	n/a
Spindles fixtured to ensure correct toe and camber	Standard	n/a
100% brake adjustment	Standard	n/a
Electrical checks on every axle	Standard	n/a
High-strength low-alloy (HSLA) tubing	Standard	n/a
Complete assembly & component traceability with serialization	Standard	n/a
Forward self-adjusting brakes on 3.5K – 10K axles	Option	option
E-coat axle beam option	Option	n/a

Information subject to change.



Super lube hub and bearing lubrication system

- Makes changing grease easier and cleaner
- Better long-term protection than standard hubs
- Time-saving lubrication system requires no disassembly of wheels or hubs
- Pumping new grease through zerk purges old grease for a complete repack
- Grease cap with rubber plug allows easy access to grease zerk in axle spindle
- Super Lube system fills the entire bearing cavity with grease, allowing for complete submersion



Hydraulic disc brakes

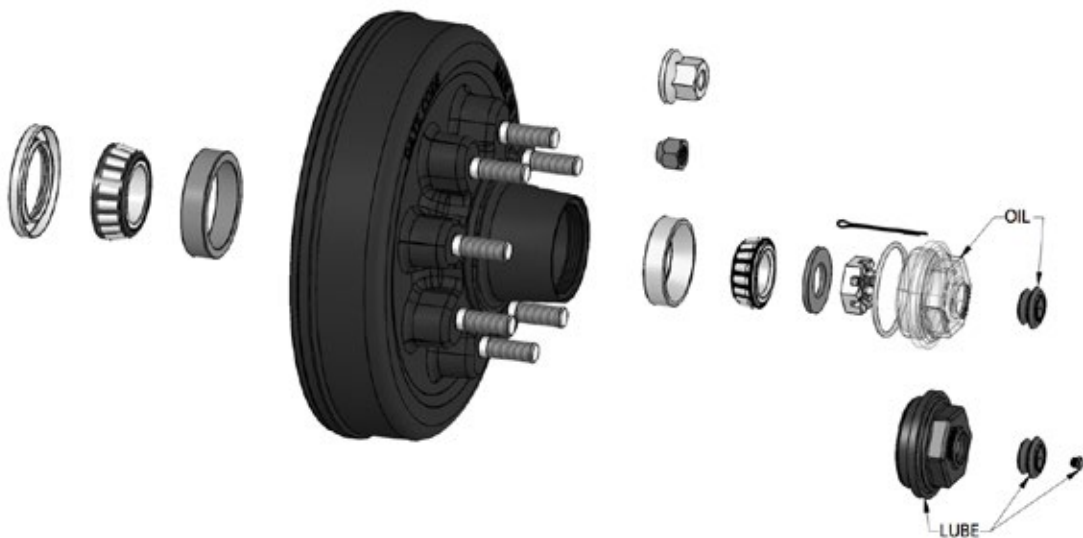
- Calipers are self-adjusting
- Braking distance can be greatly reduced
- Disc brakes provide more consistent stopping
- Balanced hub and rotor provide a smoother ride
- 10-inch rotors for fit 5-bolt, 4.5-inch pattern on 3.5K axles
- 12-inch rotors fit 6-bolt, 5.5-inch pattern on 5.2K and 6K axles
- 13-inch rotors fit 8-bolt, 6.5-inch pattern on 5.2K, 6K, 7K and 8K axles
- Less maintenance; fewer moving parts to replace than standard electric trailer brakes
- Brackets/calipers/rotors E-coated

SET THE STANDARD HIGH

Lippert Components leads the industry with innovative methods and ideas on providing the best quality axle for any challenge in the trailer market. Lippert sets the standard high with the best standard features and options.

Features:

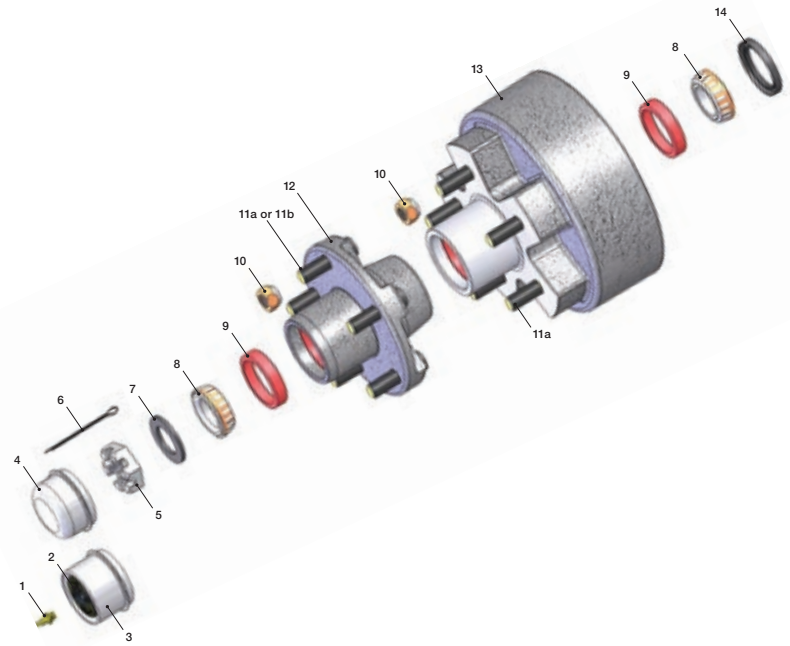
- Industry exclusive 8K hybrid axle
- 12" x 2" brake assembly offered in:
 - Electric
 - Electric Self-Adjusting
 - Hydraulic drum
 - Hydraulic disc
- Industry standard 8K bearing package
- Narrower overhang; maximizes trailer's frame rail center spring
- Allows for increased box size & payload
- Oil bath or Super Lube
- Straight or drop spindle



AXLE REPLACEMENT PARTS_ 2K & 3.5K

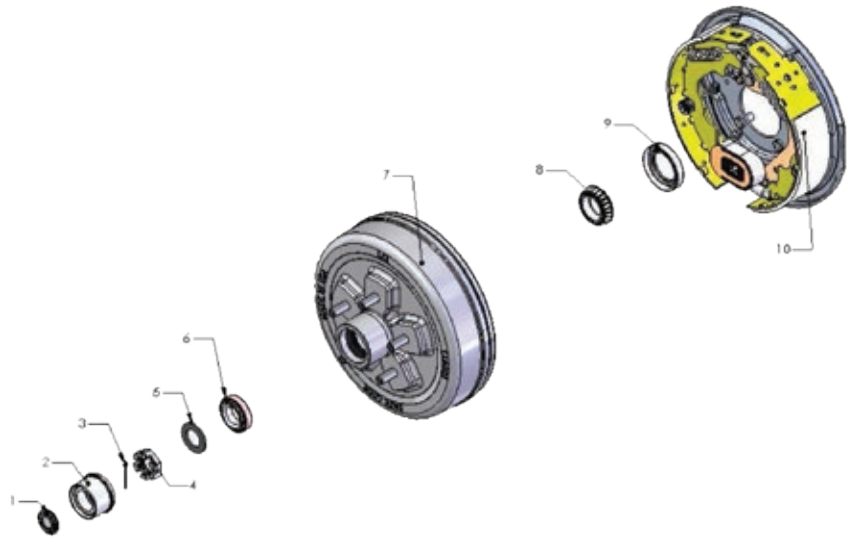
2K Wheel End Replacements

item	part no.	description
1	122255	Grease Zerk Lubed
2	122065	Rubber Plug Lubed
3	122067	Dust Cap Lubed
4	122099	Dust Cap Non Lubed
5	122081	Spindle Nut 1"-14
6	122075	Cotter Pin 0.120 X 1.75
7	119214	Spindle Washer 1.06 X 1.68 OD
8	122089	Outer & Inner Bearing Cone L44649
9	125102	Outer & Inner Bearing Cup L44610
10	122076	Cone Wheel Nut 1/2 - 20 60°
11a	121803	Stud, 1/2-20, 0.617 Dia. Knurl
11b	136109	Stud, 1/2-20, 0.545 Dia. Knurl
12	134332	Idler Hub; 5 on 4.50; 5.50" Dia. Hub Flange
	158529	Idler Hub; 5 on 4.50; 6.50" Dia. Hub Flange
	134574	Idler Hub; 4 on 4.00
13	134206	Brake Hub; 5 On 4.50
14	139514	Grease Seal 1.50" Shaft



3500K Wheel End Replacements

item	part no.	description
1	122065	Rubber Plug for lubed grease caps
2	122067	Dust Cap; 2" bore; super lube
	122099	Dust Cap; 2" bore; non-lubed
3	122075	Cotter Pin
4	122081	Spindle Nut; 6 slot
5	119214	Spindle Washer; round 1D
5a	119215	Spindle Washer; D-flat
5b	119216	Spindle Washer; locking tang
6	122089	Outer Bearing Cone L44649
	125102	Outer Bearing Cup L44610
7	122460	Hub Drum w/ cups & studs 5/4.5"
8	122092	Inner Bearing Cone L68149
	124296	Inner Bearing Cup L68111
9	122087	Grease Seal; Double Lip; 1.72" ID x 2.565" OD
10	122258	Brake Assembly 10" x 2.25" LH
	122450	Brake Assembly 10" x 2.25" RH
	136451	Shoe & lining kit for (1) brake
	136454	Magnet kit; green wire
	136452	Spring & hardware kit for (1) brake
136453	Adjuster screw and spring kit	

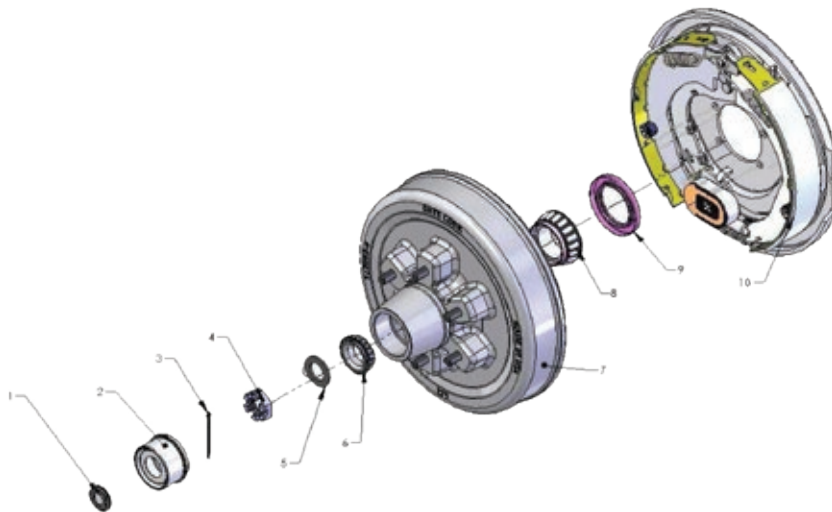


Use 5a/5b in place of 3 & 5 if spindle has no hole for cotter pin and has D-flat washer

AXLE REPLACEMENT PARTS_ 5.2K & 6K

5200K Wheel End Replacements

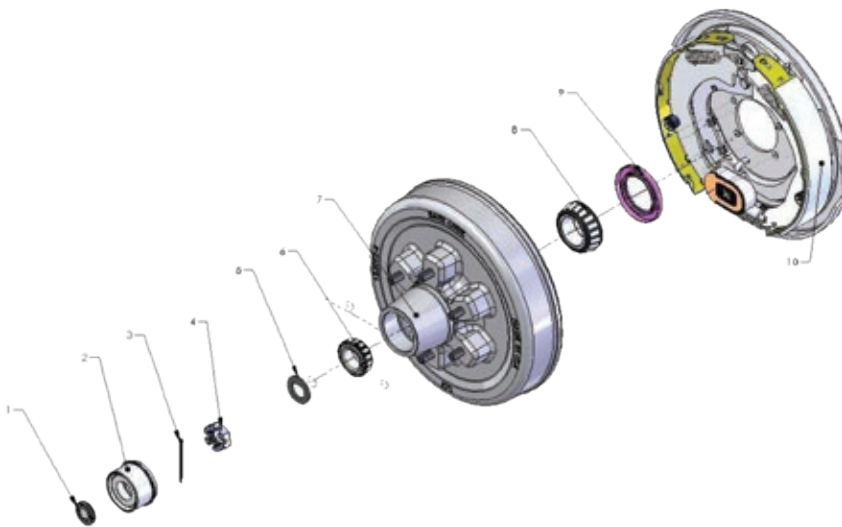
item	part no.	description
1	122065	Rubber Plug for lubed grease caps
2	122064	Dust Cap; 2.5" bore; super lube
	122071	Dust Cap; 2.5" bore; non-lubed
3	122075	Cotter Pin
4	122081	Spindle Nut; 6 slot
5	119214	Spindle Washer; round ID
5a	119215	Spindle Washer; D-flat
5b	119216	Spindle Washer; locking tang
6	122090	Outer Bearing Cone LM67048
	124292	Outer Bearing Cup LM67010
7	122463	Hub Drum w/ cups & studs 6/5.5"
8	122066	Inner Bearing Cone 25580
	124287	Inner Bearing Cup 25520
9	122088	Grease Seal; Double Lip; 2.25" ID x 3.376" OD
10	122259	Brake Assembly 12" x 2" LH
	122451	Brake Assembly 12" x 2" RH
	136444	Shoe & lining kit for (1) brake
	136447	Magnet kit; black or white wire
	136445	Spring & hardware kit
	136453	Adjuster screw and spring kit



Use 5a/5b in place of 3 & 5 if spindle has no hole for cotter pin and has D-flat washer

6000K Wheel End Replacements

item	part no.	description
1	122065	Rubber Plug for lubed grease caps
2	122064	Dust Cap; 2.5" bore; super lube
	122071	Dust Cap; 2.5" bore; non-lubed
3	122075	Cotter Pin
4	122081	Spindle Nut; 6 slot
5	179660	Spindle Washer; round ID
5a	172888	Spindle Washer; D-flat
5b	119216	Spindle Washer; locking tang
6	122091	Outer Bearing Cone 15123
	126996	Outer Bearing Cup 15245
7	122463	Hub Drum w/ cups & studs 6/5.5"
8	122066	Inner Bearing Cone 25580
	124287	Inner Bearing Cup 25520
9	122088	Grease Seal; Double Lip; 2.25" ID x 3.376" OD
10	122259	Brake Assembly 12" x 2" LH
	122451	Brake Assembly 12" x 2" RH
	136444	Shoe & lining kit for (1) brake
	136447	Magnet kit; black or white wire
	136445	Spring & hardware kit for (1) brake
	136453	Adjuster screw and spring kit

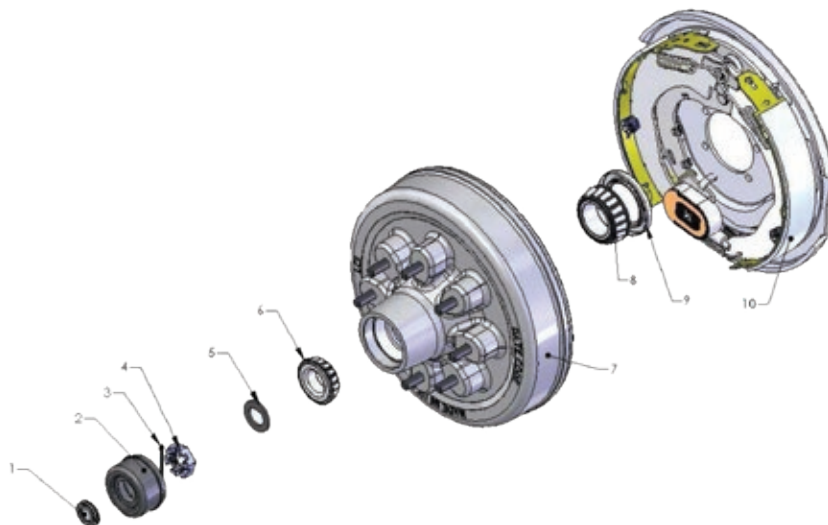


Use 5a/5b in place of 3 & 5 if spindle has no hole for cotter pin and has D-flat washer

AXLE REPLACEMENT PARTS_ 7K & 8K

7K Wheel End Replacements

item	part no.	description
1	122065	Rubber Plug for lubed grease caps
2	127300	Dust Cap; 2.75" bore; super lube
	127206	Dust Cap; 2.75" bore; non-lubed
3	122075	Cotter Pin
4	122081	Spindle Nut; 6 slot
5	179660	Spindle Washer; round ID
5a	172888	Spindle Washer; D-flat
5b	119216	Spindle Washer; locking tang
6	127009	Outer Bearing Cone 14125A
	127012	Outer Bearing Cup 14276
7	122463	Hub Drum w/ cups & studs 6/5.5"
7a	141290	Hub Drum; 9/16" studs; 8/6.5"
8	122066	Inner Bearing Cone 25580
	124287	Inner Bearing Cup 25520
9	122088	Grease Seal; Double Lip; 2.25" ID x 3.376" OD
10	122259	Brake Assembly 12" x 2" LH
	122451	Brake Assembly 12" x 2" RH
	136444	Shoe & lining kit for (1) brake
	136447	Magnet kit; black or white wire
	136445	Spring & hardware kit for (1) brake
	136453	Adjuster screw and spring kit

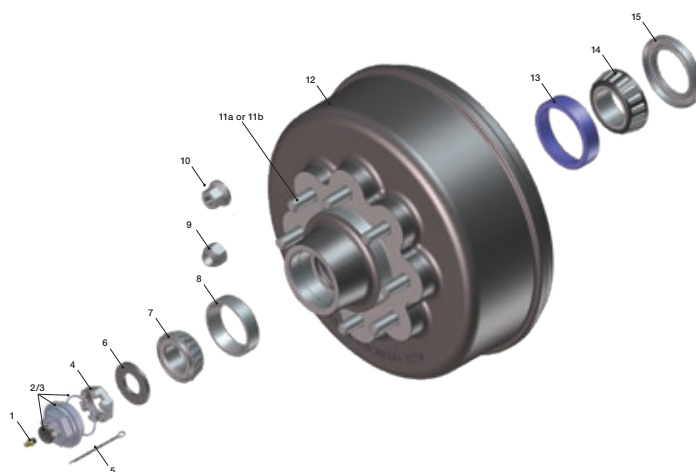


8K Wheel End Replacements

item	part no.	description
1	122255	Grease Zerk Lubed
2	695814	KIT includes: Rubber Plug For Caps, Oil Cap, Clear & O-Ring For Caps
3	700266	KIT includes: Rubber Plug For Caps, Grease Cap, Black & O-Ring For Caps
4	122081	Spindle Nut 1"-14
5	122075	Cotter Pin 0.120 X 1.75
6	179660	Spindle Washer 1.06 X 2.00 OD
7	129752	Outer Bearing Cone 02475
8	168687	Outer Bearing Cup 02420
9	134581	Cone Wheel Nut 9/16 - 18 60°
10	176321	Flanged Wheel Nut 5/8-18
11a	175704	Stud, 9/16-18
11b	175705	Stud, 5/8-18
12	2772121	Brake Hub; 865-5/8"; 12 1/4" Brake; 4.75" Pilot
	2772101	Brake Hub - 865-9/16"; 12 1/4" Brake; 4.75" Pilot
	347627	Brake Hub; 865-5/8"; 12" Brake; 4.75" Pilot
	359552	Brake Hub; 865-9/16"; 12" Brake; 4.75" Pilot
13	124287	Inner Bearing Cup 25520
14	122066	Inner Bearing Cone 25580
15	122088	Grease Seal 2.25" Shaft
	276712	Oil Seal 2.25" Shaft (Not Pictured)

part no.	brakes
156443	Brake; Electric - LH X 12.25 X 3.38; 4 Bolt; 8000#
156444	Brake; Electric - RH X 12.25 X 3.38; 4 Bolt; 8000#
162836	Brake Bolt - 1/2 - 20 X 1 1/2
162838	Brake Lock Washer - 1/2
122253	Brake Hex Nut - 1/2 - 20

part no.	brake parts
330792	12 1/4" X 3.38" Shoe & Lining Kit LH, 8-10K
3307921	12 1/4" X 3.38" Shoe & Lining Kit RH, 8-10K
293115	12 1/4" Magnet Kit, 8-12K



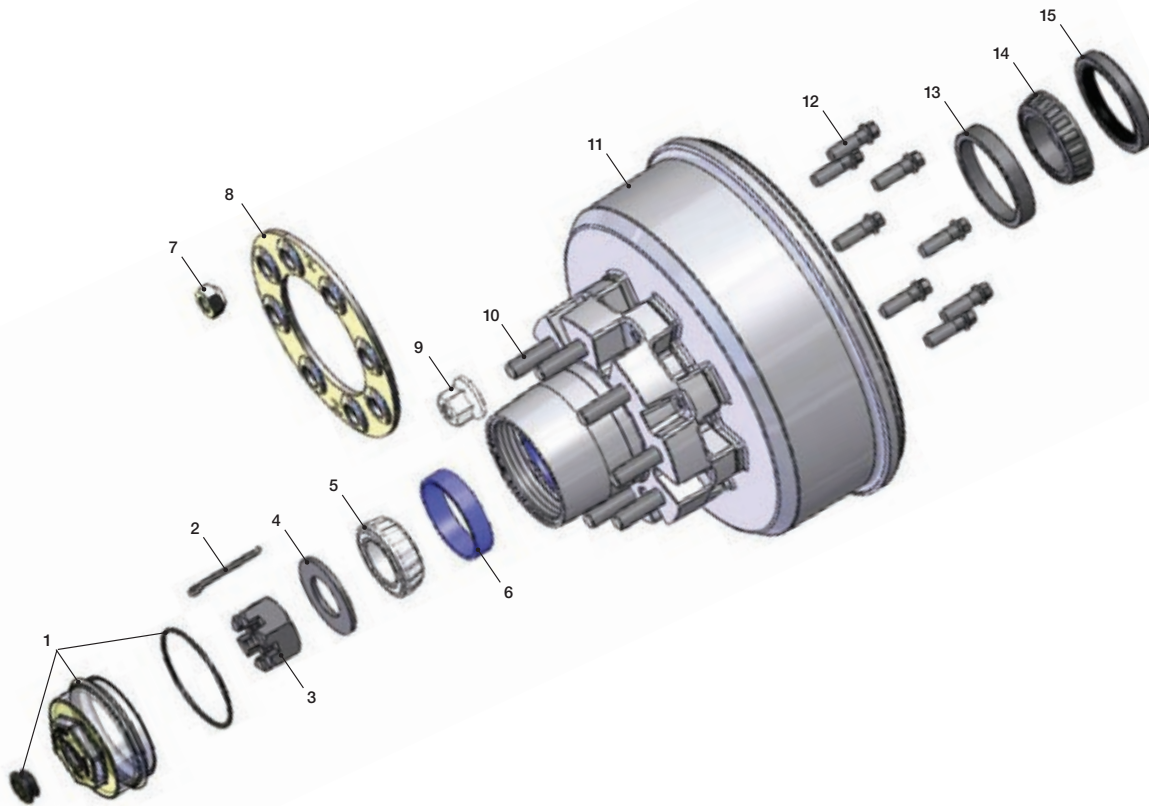
AXLE REPLACEMENT PARTS_10K

10K Wheel End Replacements

item	part no.	description
1	693935	KIT includes: Rubber Plug For Oil Cap, Oil Cap & O-Ring For Oil Cap
2	181899	Cotter Pin - 1/4" x 2 1/4"
3	181894	Spindle Nut - 1 1/2" - 12
4	181895	Spindle Washer - 1.50" x 3.00" OD
5	122066	Bearing - Cone, 10K Outer (25580)
6	124287	Bearing - Cup/Race, 10K Outer (25520)
7	205048	Wheel Nut - 5/8" - 18; 90°
8	205049	Wheel Clamp Ring for 5/8" Studs
9	176321	Flanged Wheel Nut 5/8 - 18
10	183128	Stud - 5/8" - 18 x 3.15"
11	183662 183168 183537	Brake Drum Hub; 865 - 5/8"; 4.75" Pilot Idler Hub, 865-5/8"; 4.75" Pilot (Subassembly - Not Pictured) Brake Drum, 865-5/8" (Subassembly - Not Pictured)
12	183536	Drum Mounting Bolt
13	183463	Bearing - Cup/Race, 10K Inner (382A)
14	183807	Bearing - Cone, 10K Inner (387A)
15	176692	Oil Seal - 2.855 ID x 3.880 OD, National #370150A

part no.	brakes
181935	Brake; Electric - LH X 12.25" X 3.38"; 7 Bolt; 10000#
181936	Brake; Electric - RH X 12.25" X 3.38"; 7 Bolt; 10000#
207576	Brake Bolt - 7/16 - 20 X 1 1/2
122086	Brake Lock Washer - 7/16
122085	Brake Hex Nut- 7/16 - 20

part no.	brake parts
330792	12 1/4" X 3.38" Shoe & Lining Kit LH, 8-10K
3307921	12 1/4" X 3.38" Shoe & Lining Kit RH, 8-10K
293115	12 1/4" Magnet Kit, 8-12K



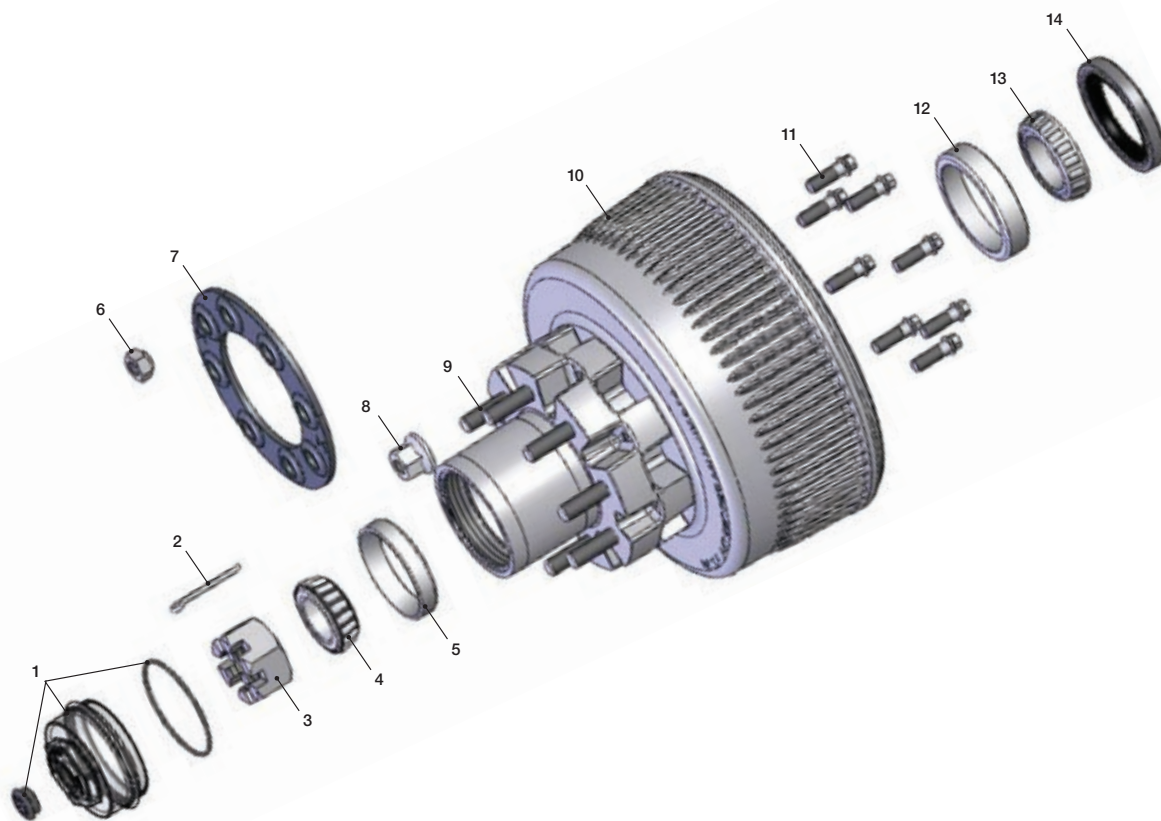
AXLE REPLACEMENT PARTS_ 12K

12K Wheel End Replacements

item	part no.	description
1	693935	Kit includes: Rubber Plug For Oil Cap, Oil Cap O-Ring For Oil Cap
2	181899	Cotter Pin - 1/4" X 2 1/4"
3	330037	Spindle Nut - 1 3/4" - 12
4	293382	Bearing - Cone, 12K Outer (28682)
5	293381	Bearing - Cup/Race, 12K Outer (28622)
6	205048	Wheel Nut - 5/8-18; 90°
7	205049	Wheel Clamp Ring For 5/8" Studs
8	176321	Flanged Wheel Nut 5/8-18
9	183128	Stud - 5/8-18 X 3.15"
10	297983 301691 301940	Brake Drum-Hub; 865-5/8"; 4.75" Pilot Idler Hub, 865-5/8"; 4.75" Pilot (Subassembly - Not Pictured) Brake Drum, 865-5/8" (Subassembly - Not Pictured)
11	183536	Drum Mounting Bolt
12	293379	Bearing - Cup/Race, 12K Inner (3920)
13	293380	Bearing - Cone, 12K Inner (3984)
14	295924	Seal - 3.125" Shaft X 4.50" Bore; National #B370014BGR

part no.	brakes
297998	Brake, Electric - LH X 12.25" X 5", 7 Bolt, 12000#
2979981	Brake, Electric - RH X 12.25" X 5", 7 Bolt, 12000#
207576	Brake Bolt - 7/16 - 20 X 1 1/2
122086	Brake Lock Washer - 7/16
122085	Brake Hex Nut- 7/16 - 20

part no.	brake parts
330793	12 1/4" X 5" Shoe & Lining Kit LH, 12K
3307931	12 1/4" X 5" Shoe & Lining Kit RH, 12K
293115	12 1/4" Magnet Kit, 8-12K

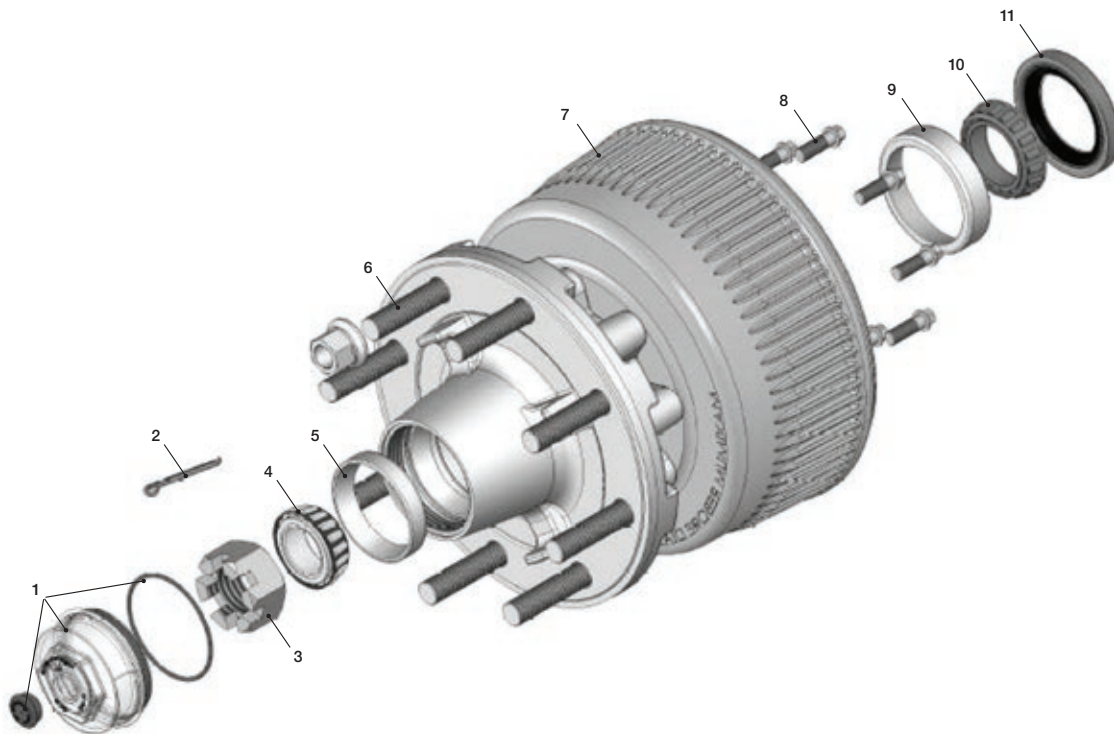


16K Wheel End Replacements

item	part no.	description
1	693935	Kit includes: Rubber Plug For Oil Cap, Oil Cap O-Ring For Oil Cap
2	181899	Cotter Pin - 1/4" X 2 1/4"
3	330037	Spindle Nut - 1 3/4" - 12
4	293382	Bearing - Cone, 16K Outer (28682)
5	293381	Bearing - Cup/Race, 16K Outer (28622)
6	352774	Stud - M22 X 1.5 X 4.79", GR 10.9
7	353323	Brake Drum-Hub; 8 On 275mm, M22 Studs
8	183536	Drum Mounting Bolt
9	293379	Bearing - Cup/Race, 16K Inner (3920)
10	293380	Bearing - Cone, 16K Inner (3984)
11	295924	Seal - 3.125" Shaft X 4.50" Bore; National #B370014BGR
	358550	Spindle Washer - 1 3/4" X 3.00" (Not Pictured)

part no.	brakes
297998	Brake, Electric - LH X 12.25" X 5", 7 Bolt, 16000#
2979981	Brake, Electric - RH X 12.25" X 5", 7 Bolt, 16000#
207576	Brake Bolt - 7/16 - 20 X 1 1/2
122086	Brake Lock Washer - 7/16
122085	Brake Hex Nut- 7/16 - 20

part no.	brake parts
330793	12 1/4" X 5" Shoe & Lining Kit LH, 16K
3307931	12 1/4" X 5" Shoe & Lining Kit RH, 16K
293115	12 1/4" Magnet Kit, 16K



ROAD ARMOR™_SHOCK ABSORBING EQUALIZER

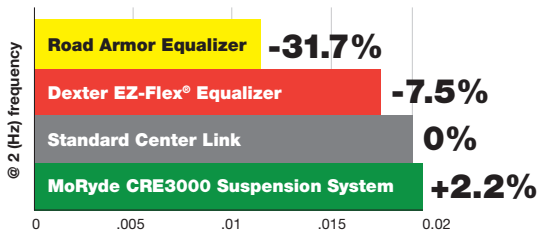
360 DEGREES OF PROTECTION

Introducing the Road Armor™ Shock Absorbing Equalizer, the latest ride enhancing product brought to you by Lippert Components. Built on our legendary Trailair® anti-shock technology, the patent pending Road Armor Equalizer is the first of its kind to dampen road shock and vibrations transferred from both the leading and trailing trailer axle leaf springs.



Road Armor Equalizer Frame Chatter Testing Results

During a test run, Road Armor decreased chatter by 31.7%



Features:

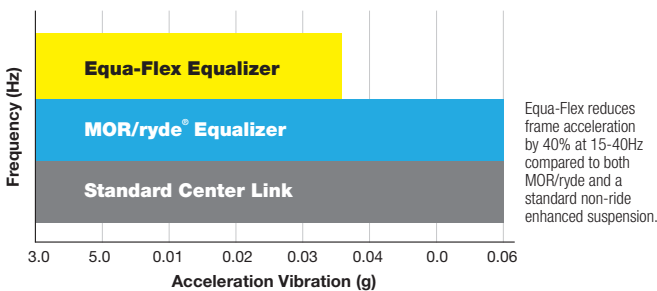
- Includes greasable bronze bushings
- Easy aftermarket upgrade
- Upgraded spray-coating on all fasteners to match automotive specifications
- Great substitution for torsion axles
- Available in tandem and triple applications

EQUA-FLEX®_RUBBERIZED EQUALIZER

The patented Equa-Flex rubberized equalizer absorbs road shock like a sponge instead of transferring it to the trailer and cargo, preventing damage that can be caused by a bumpy ride. Equa-Flex also reduces fore-to-aft movement, often referred to as “chucking,” to provide a smooth, comfortable ride. Equa-Flex also scored a 7.5 out of 10 in independent testing, compared to 5.0 by the leading competitor.



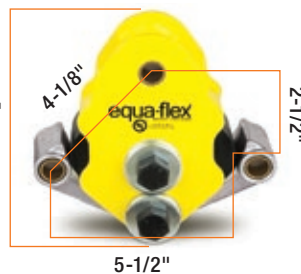
Equa-Flex Equalizer Frame Chatter Testing Results



5,200-lb Capacity
314336 **Tandem Spread Axle**



Under 6,000-lb Capacities
279687 **Tandem Application**
281314 **Triple Application**



Over 6,000-lb Capacities
279688 **Tandem Application**
279689 **Triple Application**



FORWARD SELF-ADJUSTING BRAKES

**BE PREPARED
IN CASE OF AN
EMERGENCY STOP**

Standard brakes should be adjusted every three months. Forward Self-Adjusting Brakes self-adjust during every forward stop, providing up to 50 percent better braking distance and preventing premature brake line and magnet wear.

Features:

- Self-adjust during every forward stop
- Provide optimal brake performance
- Provide optimal brake lining and magnet wear



**GET UP TO
50
PERCENT BETTER
BRAKING
DISTANCE**



Trailer equipped with forward self-adjusting brakes

Trailer Equipped with Standard Electric Brakes



Trailer equipped with standard electric brakes

SIMULATED STOPPING DISTANCE AT 60 MPH

CARGO/ STORAGE



CUSTOMIZE FOR EASY ACCESS TO STORAGE

Kwikee Cargo Trays make accessing storage so much easier. RVers can stop climbing into deep storage compartments or straining to reach items in the back. Instead they can simply slide out the tray and grab what they need. Industrial grade ball-bearing slides keep trays gliding smoothly and allow them to extend all the way out. You customize the Kwikee Cargo Trays to perfectly fit each customer's storage compartments using plywood. Once installed, cover with carpet, rubber matting or vinyl.

Kwikee[®]
PRODUCTS

by  Lippert Components[®]

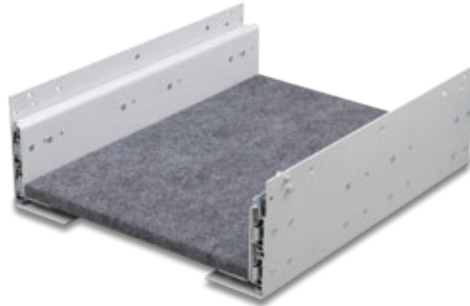


KWIKEE®_CARGO TRAYS

Heavy-Duty Slide



Shown as packaged



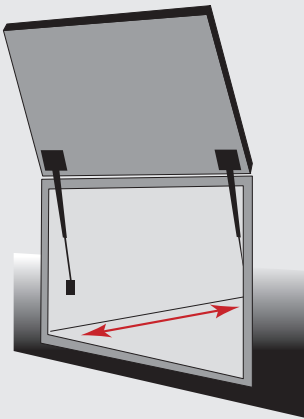
Flooring not included;
Shown as installed

Features:

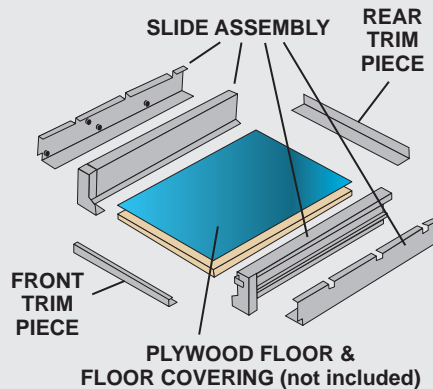
- Industrial grade ball-bearing slide
- 200-400-pound weight capacity
- Safety latch holds platform secure during travel and when fully extended
- Made with heavy-gauge steel and powder-coated finish
- Optional trim kit sold separately

How to Measure

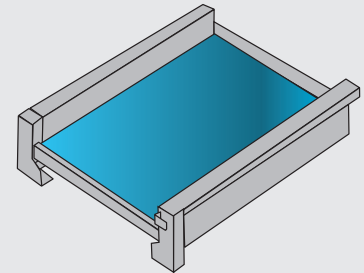
1. To select slide size (length), measure depth of compartment.



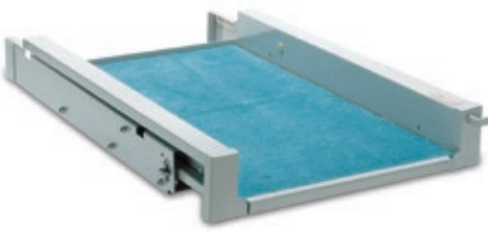
2. Determine desired width, allowing 4" for frame sides. Cut a section of 3/4" plywood (not supplied) and both trim pieces (if needed). Attach plywood to inner slide frame.
3. Square outer slide frame. Mark support holes, drill, and secure outer frame through the basement floor.



4. Cover plywood with carpet, rubber mat, or vinyl (not supplied).



Super Slide I



Flooring not included;
shown as installed



Shown as packaged

Features:

- 1,000-pound capacity cargo hauler with roller-bearing action
- Ships with U-Channel and L-Bracket for trim and stiffener
- If longer trim is needed, order from trim kit listing and cut to fit
- Fits almost any sub-floor compartment
- A spring-loaded latch locks the slide in three positions
- Color-matched trim pieces available for the deck
- Width is defined by the size of the compartment

Super Slide II



Shown as packaged



Flooring not included; shown as installed

Features:

- Heavy-duty roller bearings
- 800-pound weight capacity
- One-direction slides lock in closed position
- Two-way slides lock in center
- Corrosion-resistant roller bearing action
- Compartment depths from 36" to 90"

Trim Kits for Super Slide II



Shown as packaged

Trim kit is required for Super Slide II. Order trim kit to desired compartment width less 4" (see chart). Trim kit includes (2) end trim pieces, jig kit, and (3) mid-rails. You add the plywood and carpet.

DOORS



BETTER STANDARD FEATURES. BETTER OPTIONS.

We've developed many exciting features including lighted thresholds, sturdy kick panels, the friction hinge and multiple window options for trailer doors. We offer custom colors and can work with you to develop custom door designs to meet your unique specifications.

All of our doors feature excellent water management systems to safeguard the trailer from water infiltration. We own the design and build of each door from start to finish, ensuring we consistently bring you premium, American-made products that will stand the test of time.



FEATURE	LCI	COMPETITION	ADVANTAGE
Outer frame thickness	1/8"	1/16"	Increased door strength
UV stable window	Standard	N/A	Frame won't yellow
Hinge size	9-1/2"	6-1/2" to 7-1/2"	Increased strength
Built-in camber	Standard	N/A	More rigid door
Integrated felt seal	Standard	N/A	More secure
Screen door thickness	1"	1/2"	Increased screen door strength
Screen door hinge	Stainless Steel	Aluminum	Increased screen door strength
Clear slider panel	Standard	N/A	Additional viewing/more light

OVER 40 NEVER BEFORE SEEN PRODUCT IMPROVEMENTS AND INNOVATIONS



Multiple window design options

1 Only LCI entry doors are available with a frameless window, giving the trailer a sleek look. Obscure glass window comes with a plastic frame and is standard for all LCI entry doors. Full length options are available on all doors. Full view windows come with black or white frames and obscure or tinted (GL-20) glass color.



Latch options

2 White latch standard; black and chrome also available; any latch on the market may be applied.



Friction Hinge option

3 Our integrated Friction Hinge eliminates the need for gas struts and door catches. It will keep the door open in winds up to 15 mph. Gas struts are available upon request.



Keyed Alike™ Lock System

4 Keyed Alike lock system, which allows a manufacturer or dealer to standardize each trailer so just one key works with every door lock. The Keyed Alike system is available on LCI's complete line of trailer entry, ramp and baggage doors.



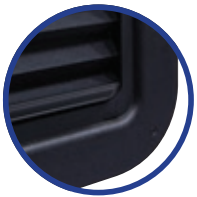
Bauer keyless entry option

5 Wireless and self-contained. Making it simple to install. Its Captivate Touch Technology illuminates the keypad as needed.



Standard easy snap trim

6 Our automotive-grade plastic snap trim allows for easy door installation. Standard on white and black doors. Snap trim, drip cap and threshold included with door and shipped loose.



Integrated Slim Shade Option

7 The Integrated Slim Shade window features a built-in interior blind to block out heat or add privacy.



Standard push-down screen knob

8 Our industry-exclusive push-down screen door knob allows users to easily open the screen door while the slider latch is closed. Standard on all screen doors.



Standard raised kick panel

9 Our raised kick panel is durable and strong. The competition's waves and bends. LCI's are designed to last.



Lighted entry threshold option

10 Our lighted threshold makes entering a coach safer when it's dark. The long-lasting LED light strip is integrated into the threshold and will stand up to heavy foot traffic.



Standard soft screen door corners

11 Our screen door corners are now fastened, not mitered, making our screens more solid and sturdy. The radius plastic plugs won't snag clothing.

- Virtually any radius window (slider, etc.) can be applied
- Storm window packages available
- LCI can match any extrusion color

BETTER STANDARD FEATURES, BETTER OPTIONS

LCI offers a full line of baggage and access doors for trailers. Standard features include extruded aluminum inner and outer frames, foam core construction, piano hinges and internal weep systems.

Features:

- Radius or square corners
- Fiberglass or aluminum construction
- Smooth or embossed finish (white or gray)
- Screw covers
- Painted frames
- Multiple slam latch options
- Key locks and thumb locks
- Finger pulls



Options & Specs

SERIES	Hinge	Latches	Core
07 SERIES	<ul style="list-style-type: none"> • Extruded • Solid 	<ul style="list-style-type: none"> • Thumb turns and/or 751 keyed locks/finger pulls • LCI slam latch • Bauer Slam • Keyed Alike options 	<ul style="list-style-type: none"> • 3/8" foam + skins • 1.5# • Louvers or mesh available • Backers (this door does not support use of struts) • Thermal control option available • 07 available in radius only
08 SERIES	<ul style="list-style-type: none"> • Extruded • Solid 	<ul style="list-style-type: none"> • Thumb turns and/or 751 keyed locks/finger pulls • LCI slam latch • Southco slam latch • Bauer Slam • Keyed Alike options 	<ul style="list-style-type: none"> • .900" foam + skins • 1.5# • Steel Backers • Thermal control option available
AQ SERIES	<ul style="list-style-type: none"> • Solid 	<ul style="list-style-type: none"> • Thumb turns and/or 751 keyed locks/finger pulls • LCI slam latch • Bauer Slam • Keyed Alike option 	<ul style="list-style-type: none"> • .520" foam + skins • 1.5# • No backers • Thermal control option
13 SERIES	<ul style="list-style-type: none"> • Extruded • Solid 	<ul style="list-style-type: none"> • Thumb turns and/or 751 keyed locks/finger pulls • LCI slam latch • Qty. of latches controlled by rules based off size of the door • Keyed Alike option 	<ul style="list-style-type: none"> • .900" foam + skins • 3# • Thermal control option available
96 SERIES	<ul style="list-style-type: none"> • Extruded • Solid 	<ul style="list-style-type: none"> • Thumb turns and/or 751 keyed locks/finger pulls • Keyed Alike option • Slams are not an option 	<ul style="list-style-type: none"> • 5/8" foam + skins • 1.5# • No backers • Aluminum and vinyl glazing holds the core in the frame • Thermal control option
85 SERIES	<ul style="list-style-type: none"> • Radius Door - piano hinge only • Square Door - extruded only built into the frame 	<ul style="list-style-type: none"> • Thumb turns and/or 751 keyed locks/finger pulls • Keyed Alike option 	<ul style="list-style-type: none"> • 3/8" foam + skins • 1.5# • Louvers or mesh • Square Door - "No skin" option available • Thermal control option

PREMIUM WATER MANAGEMENT



Aqua Shed Baggage Doors are the cutting-edge in water management, safeguarding exterior trailer compartments from water infiltration using automotive-grade, low-profile bulb seals with radius corners that fit snugly into the heavy-duty radius aluminum frame. The watertight design uses an outer frame drip rail to shed water away from the hinge and an internal extruded channel and weep holes to drain excess water off and out. Aqua Shed Baggage Doors feature pre-punched interior mounting holes (versus exterior mounting holes) to further prevent leaks and a lightweight 5/8" composite core.

Features:

- Automotive-grade, low-profile bulb seal fits snugly into radius frame
- Integrated drip rail sheds water away from the hinge
- Integrated channel and weep holes provide premium water management
- Double door option available
- Wider frame extrusion provides sturdier strut mounting
- Pre-punched interior mounting holes further prevent water infiltration
- Thumb turns, keyed locks and slam latches available
- Heavy-duty aluminum frame and lightweight 5/8" composite core
- Multiple colors available



STAYS OPEN DURING USE

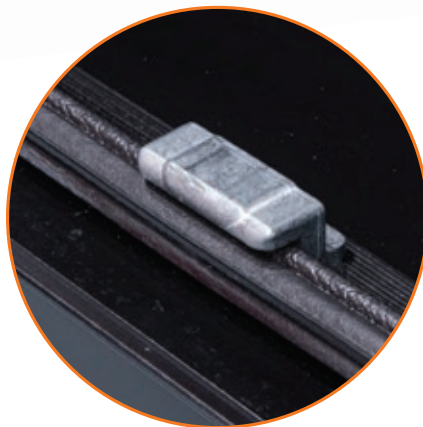
The Composite Slam Latch is one of our most popular baggage door options because of its long-term durability, strong sealing system and its versatility. This latch works with multiple core thicknesses, doesn't require the door frame to be notched for installation and operates using a sturdy metal mechanism. Now we've also added the Invisi-Hold hidden magnet so the door stays open during use. Not only that, but it also works with our new Keyed Alike™ lock system so the lock can be standardized with all the doors on the unit.

Features:

- Slam Latch doesn't require the door to be notched, maintaining door integrity
- Secure watertight seal
- Works with multiple door core thicknesses
- Durable metal mechanism
- Composite and metal latches available
- Keyed Alike option
- Integrated drip rail sheds water away from the hinge



DOORS



Invisi-Hold hidden magnet securely holds door open

ELECTRONICS



CHOOSE HOW YOU CONNECT

Smartphones, smart homes, smart cars; We live in a connected world. Digitally equipped trailers won't just be a request by future generations, it will be a requirement. Lippert Components has the solution. We began the process

of developing the connected trailer over five years ago with our myRV® infrastructure, placing the RV's controls at the campers' fingertips. Now, with the OneControl® app, campers can use their own device to control and monitor

a nearly unlimited list of products and features, all from the palm of their hands. The future of RVing is already here, so help your customers simplify their journey.



- | | | | | | | | |
|---------------|------------|-----------------|---------------------|------------|--------------|----------------------|------------|
| | | | | | | | |
| Tire Pressure | Water Pump | Stabilizer Jack | Generator | Vent Cover | Landing Gear | Multiple Light Zones | Awnings |
| | | | | | | | |
| TV Lift | Bed Lifts | Tank Monitor | Universal IR Remote | HVAC | Slides | Leveling | Door Locks |

THE ULTIMATE USER EXPERIENCE



OneControl Voice™ the trailer industry's first-ever fully integrated voice-controlled system. Trailer owners can now control their coach using the fastest growing technology in the consumer electronics market.

Control your coach with Amazon Alexa®

- Google Home support planned for 2018
- Eventual support for other voice systems (Microsoft, Apple, etc)

- Alexa, Play my favorite song! Order my favorite pizza from Dominos, What's the weather going to be like today? Is my garage door open?
- Vice-versa, OneControl Voice works in your house: "OneControl turn on HVAC"
- Alexa, Have OneControl turn on kitchen lights!



OneControl Voice isn't just limited to controlling your RV

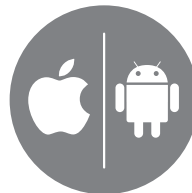
- Your RV is just another device integrated into existing voice services (home, car, etc)
- OneControl Voice can do anything you could from your house!

New LCI products will expand Voice capabilities!



Technology: Cellular/Satellite + Voice Command Technology

Requirements: Must purchase OneControl ConnectAnywhere



My Device: OneControl app available on the Apple and Android app stores



Interface Options:



5" OCTP



7" OCTP

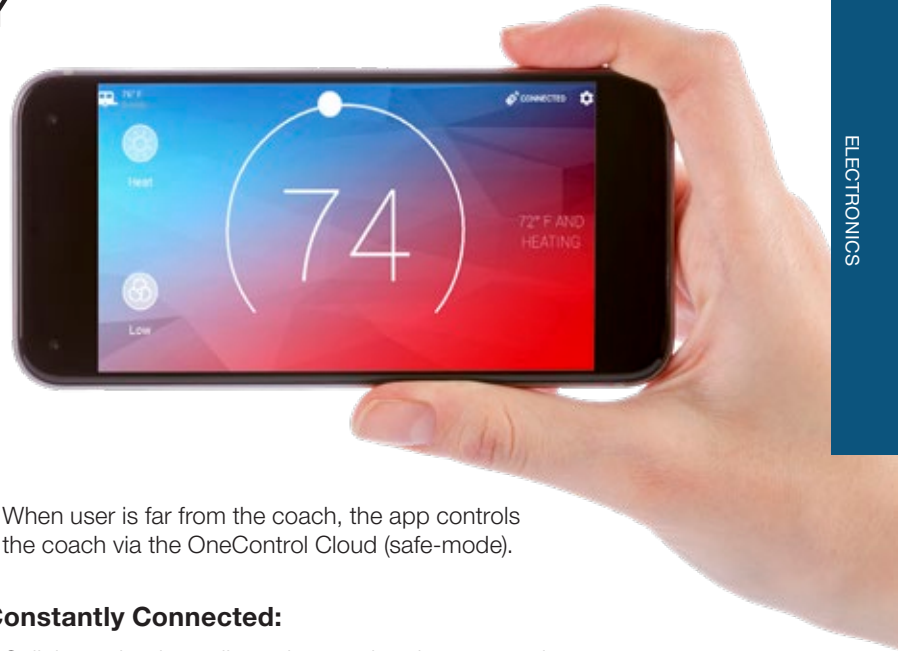


OneControl Support:
Available

CONTROL THE COACH FROM ANYWHERE IN THE WORLD WITH CELLULAR CONNECTIVITY



OneControl ConnectAnywhere™ technology utilizes cellular and satellite connections, allowing RVers the ability to remotely monitor and control many of their coach's features via the OneControl mobile app. ConnectAnywhere-equipped trailers provide remote access to common trailer functions and accessories such as electronic leveling systems, awnings, slide-outs, lighting, HVAC, water and tank levels and more.



ELECTRONICS

Control only “safe” functionality over cellular technology:

- User cannot move slides, levelers, jacks, etc. That could cause injury or damage if moved while unsupervised.
- Functions that are not permitted over cellular on greyed out on the app when cellular is operable.

OneControl Mobile App knows when you're near the coach:

- When user is close to the coach, the app controls the coach via Wi-Fi (full functionality).

- When user is far from the coach, the app controls the coach via the OneControl Cloud (safe-mode).

Constantly Connected:

- Cellular technology allows the coach to be constantly connected, which gives ConnectAnywhere the best customer experience possible.
- Diagnostics, marketing, surveys, push notifications, updates, etc. are possible with cellular service!



Technology: Cellular/Satellite

Benefits: Control certain coach functions safely from virtually anywhere in the world with cellular technology



My Device: OneControl app available on the Apple and Android app stores



Interface Options:



5" OCTP



7" OCTP



OneControl Support: Available

RV Owners enjoy enhanced LCI customer support and automated case creation.

CONTROL THE COACH LOCALLY VIA YOUR OWN SECURE WI-FI NETWORK



With the OneControl Wireless™ system, trailer owners have total control of their trailer while in range of our secure and long range Wireless Gateway - the most secure wireless connection developed by LCI Technologies with our unique and patented security protocols.

Features:

Wi-Fi Control – higher speed for increased capability

- Limitless expandability
- Streaming video (back-up/security camera)
- Wi-Fi Hot Spot (Dedicated for your RV)

More device support

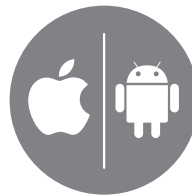
- HVAC
- Generator – Start/Stop + Hour Meter
- Leveling
- IR Remote
- Dimmable LED/RGB lighting
- Back-up/Security Camera
- Ground Control TT, 3.0 and Level Up integrated
- In-Wall, Slim Rack, and FAST Track Cable Slide integrated



Expandable – Plug and play support for current and all future OneControl products and any momentary or latching functionality



Technology: Automated CAN network accessed via a hardwired OCTP or your own smart device



My Device: OneControl app available on the Apple and Android app stores



Interface Options:



5" OCTP



7" OCTP



OneControl Support:
Unavailable

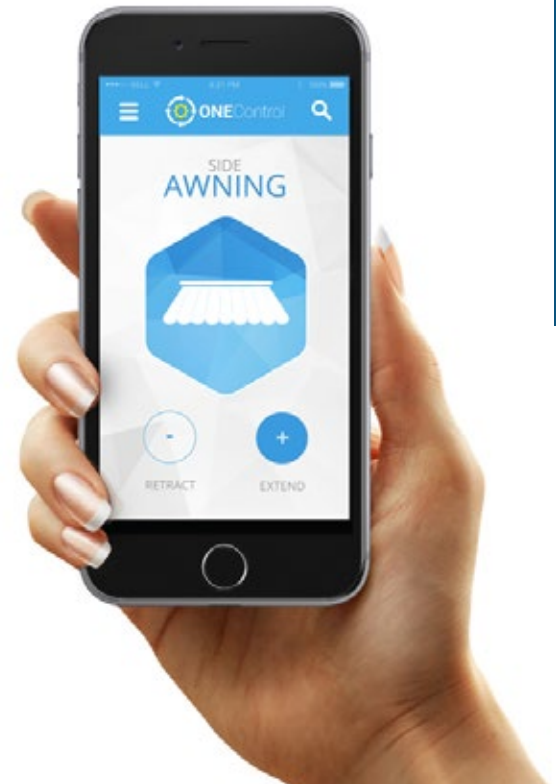
THE FOUNDATION OF EVERY GREAT CAMPING EXPERIENCE



The latest and greatest version of QuickCamp utilizes Bluetooth technology to connect to your OneControl® system via your own smart device instead of a traditional remote control. Simply download the OneControl app, configure your system, and you're ready to go. QuickCamp allows users to control up to ten functions including slide-outs, awnings, stabilizing and leveling as well as multiple lighting zones.

Features:

- The Bluetooth Enabled (BLE) Multi-Function remote board is a low cost, App driven, wireless solution
- Simply download the OneControl App to any smart device and the wizard will provide assistance to connect to your coach
- RF remote (Linc Transmitter) can be purchased separately for customers not interested in App Control
- Momentary (or reverse polarity) Functions = items that move in and out, up and down
- Latching functions = items that have an on/off switch
- The Quick Camp Remote is the backbone of the OneControl System! Converting to OneControl Wireless requires adding a Wi-fi Gateway and OneControl Touch Panel (OCTP) to open up the ability to add other features like Generator Genie, HVAC, lighting modules, camera control, IR control, tank monitoring, and more to come!

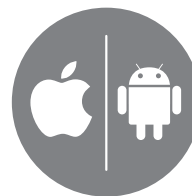


ELECTRONICS



Technology: Bluetooth

Requirements: BLE enabled smart phone, tablet, or other Android or iOS device



My Device: OneControl app available on the Apple and Android app stores



Optional Interface Options:



LED Remote



Analog Remote

- 5-Function
- 5-Function Hydraulic
- 8-Function
- 8-Function Hydraulic



OneControl Support:
Unavailable

FURNITURE



Quality workmanship and unsurpassed comfort are the foundation upon which every piece of Thomas Payne® Collection furniture is built. Equally impressive is the high level of functionality this furniture offers. With six styles of furniture and multiple fabric options to choose from, we have all the seating and sleeping options to suit your needs.

THOMAS PAYNE COLLECTION®



MODULAR
THEATER
SEATING

JACKKNIFE
SOFA

TRI-FOLD SOFA

PUSH BACK
RECLINER

SWIVEL GLIDER RECLINER

EURO RECLINER CHAIR

EURO XL RECLINER CHAIR

All fabrics are made of PolyHyde™ Euro Leather vinyl. To clean your Thomas Payne furniture, simply mix mild soap with warm water and dampen a clean rag or sponge to wipe away any dirt or spills.

Theater Seating

Not only does Thomas Payne Collection Theater Seating feature plush, inviting and easy-to-clean PolyHyde™ upholstery, it also has an optional center console that provides a storage compartment and two recessed cup holders. This versatile and attractive modular theater seating features smoothly operating recliners and requires minimum wall clearance.



HERITAGE SERIES



FURNITURE

MOMENTUM SERIES

- Heat, massage and light on right and left

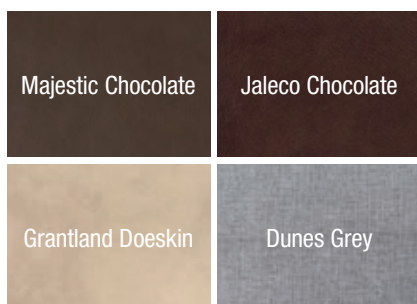


Tri-Fold Sofa

Known for its versatile functionality and comfortable sleep surface, the Thomas Payne Collection Tri-Fold Sofa converts to a very supportive, high-density foam bed in four simple steps. Its sleek design maximizes space because it takes up about one foot less when extended than a traditional hide-a-bed. Durable PolyHyde™ upholstery resists stains better than leather or fabric.



SHOWN IN GRANTLAND DOESKIN



Swivel Glider Recliner

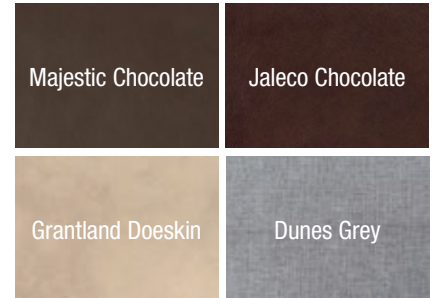
Each attractive and supportive Swivel Glider Recliner is upholstered with luxurious easy-to-clean PolyHyde™ upholstery. This perfect addition to your trailer living room coordinates beautifully with sofas and Push Back Recliners. All Swivel Glider Recliners have heated seats and a side pocket for the remote.



FURNITURE



SHOWN IN MAJESTIC CHOCOLATE

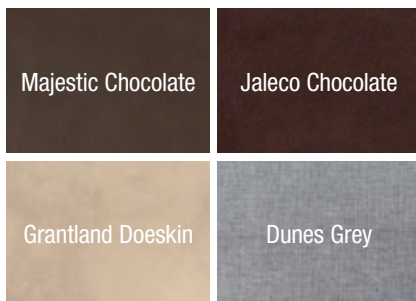


Push Back Recliner

Enjoy total relaxation whether sitting upright or fully reclined in the classic Thomas Payne Collection Push Back Recliner. Choose from three elegant colors to match your trailer décor.



SHOWN IN JALECO CHOCOLATE

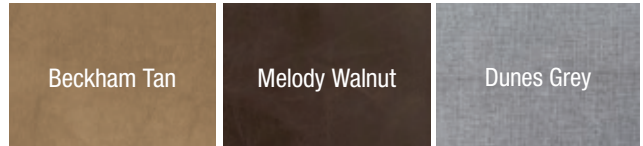


Jackknife Sofa

With one easy motion, the steel-framed Jackknife Sofa converts to a bed of high-density foam. The steel spring seat supports provide a sturdy base for relaxing or sleeping.



SHOWN IN BECKHAM TAN



All jackknife sofas come with a kickboard. Leg kit also available, but must be ordered separately.

Euro Recliner Chair

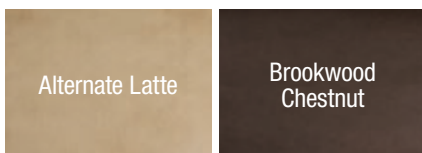
Relax after a long day of adventure in the comfortable and compact Thomas Payne Collection Euro Recliner Chair. This versatile seat is covered in attractive and durable PolyHyde™ upholstery and features a comfortable footrest.



SHOWN IN BROOKWOOD CHESTNUT



SHOWN IN ALTERNATE LATTE



XL 4" wider

KITCHEN/ BATH/FRESH WATER



The Better Bath name stands for quality, and our bath products have been the quality benchmark for more than 50 years. All our durable thermoformed bath products are made in America and are designed to last. With multiple shapes, styles and back splashes, we provide a shower or bath configuration that is sure to add timeless elegance and functionality to any trailer.



by  Lippert Components®



**Acrylonitrile
Butadiene Styrene (ABS)**

- Weighs 20-25% less than fiberglass
- ABS is tough and lasts longer than coated fiberglass

SHOWER PANS & SURROUNDS



Slate



Tile



Picture Frame





Stainless Steel

- Premium quality at an affordable price
- Stylish modern design with square corners
- Made of extra thick, durable steel



KITCHEN/BATH/FRESH WATER

FAUCETS

THOUGHTFULLY DESIGNED WITH MODERN IN MIND

Add a splash of modern to your kitchen or bath with a Stainless Steel Faucet by Lippert Components. Available in a variety of spout constructions like coiled spring and high-arched, we're challenging how the world feels about faucets. Thoughtful designs and convenient features add a splash of, dare we say, fun to your every day. Constructed with quality stainless steel, these sleek faucets are designed for maximum lifespan and durability.

Features:

- 304 Grade stainless steel construction
- Pull-down faucet head with toggle
- Toggle for stream or spray options
- Easy DIY installation
- Pairs well with stainless steel sink sets by Lippert Components*

*Items sold separately



NEW, QUIETER OPERATION



Fresh water when you want it and when you need it. The new Flow Max water pump delivers a steady flow of water to your RV. Compared to other water pumps on the market, Flow Max delivers superior pressure performance, averaging 50 PSI with an average 3.0 gallons per minute water flow (12V version). This is especially important on larger RVs that have extended plumbing running between the source point and the pump. Flow Max also features the quiet, disturbance-free operation campers need. Seeing is believing! Flow Max offers superior performance all at a price below similar products on the market today.

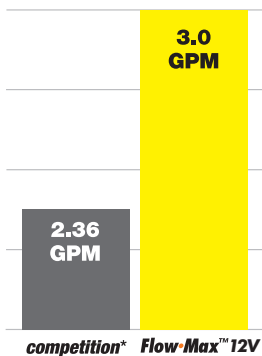


Specifications:

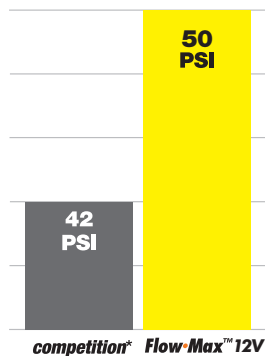
- Average 3.20 gallons per minute (GPM) flow -
*Competition *averaged 2.36 GPM when independently tested*
- Average leading pressure of 50 PSI -
*Competition *averaged 42 PSI when independently tested*
- Freeze/thaw tested up to five 2-hour cycles -
Competition's housing cracked after one cycle*

KITCHEN/BATH/FRESH WATER

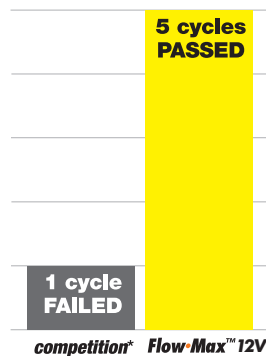
Average Gallons Per Minute



Average Leading Pressure



Freeze/Thaw 2-Hour Cycle



FEATURES

- Self-priming
- Quiet operation
- NSF & CSA Certified
- 2-year limited warranty
- 12 VDC, 9.5 max amps
- Heavy-duty, corrosion resistant motor
- Pump can run dry without incurring damage

* Compared to SHURflo® Revolution™ 4008 Fresh Water Pump. Independently tested by Progressive Engineering, Inc, Goshen, Indiana USA.

LEVELING/ STABILIZATION



NUMBER ONE RATED HYDRAULIC LEVELING SYSTEM



One-touch wireless option available

The patented six-point Level Up hydraulic leveling system levels a fifth-wheel trailer in less than a minute using a one-touch auto-leveling feature, and includes an auto re-hitch memory function that remembers the exact height at which the trailer was unhitched. Uneven ground can cause a lot of problems and other

leveling systems can stress and twist the chassis, damaging slide systems, sidewalls and windows. Level Up's patented design won't put undue stress on the chassis — Level Up's six-point leveling system incorporates leveling jacks before the front axle and behind the rear axle maintaining the integrity of the trailer at all times.



Automatic, one-touch electric leveling



Lightning fast hydraulics



Lightweight aluminum jacks



Rock-steady disturbance-free camping



6 Point Leveling System

Features:

- One-touch automatic leveling
- Lightning-fast hydraulics
- Lightweight aluminum jacks
- Rock-steady, disturbance-free camping
- Wireless remote options available

SMART JACK

NEW LOOK. MORE FEATURES.

The Smart Jack features hitch height recognition mode; once the hitch height is set, the Smart Jack will store and remember that information until a new height is stored. To set this up, first measure the ball height on the tow vehicle once unloaded. Next, extend the Smart Jack to a distance that is 4" higher than the unloaded ball height. Lastly, set the hitch height by pressing and holding the up and down arrow buttons until the interface flashes.

With the Smart Jack's hitch height recognition, simultaneously press the up and down buttons twice while holding the third button to automatically extend the Smart Jack to the stored hitch height.

With hitch height recognition, users can simply press the hitch height button and walk away! No need to stand and hold the extend button, with a stored hitch height, the new Smart Jack will automatically extend.



NEW bright halo effect LED light package shines down onto your ball and coupler where light is needed the most



NEW backlit buttons illuminate when any button is hit, and turn off automatically to reduce battery drain

Features:

- **NEW** standard **XL** 9" diameter footpad
- **NEW** drop leg with four position height adjustments at 1-1/2" increments
- **NEW** backlit modern control panel replaces tired looking rocker switches
- **NEW** battery indicator alerts user of remaining coach battery life
- **NEW** Auto-Hitch Memory Function. Smart Jack remembers where your hitch height is
- **NEW** easy auto-retract feature retracts the jack to towing height without having to hold down the switch
- **NEW** updated hood mirrors the design in today's travel trailers and hides the motor, preventing cords and wires from becoming snagged
- 3,500-pound capacity
- Easy access manual override on top of jack in case of power failure
- 30 AMP, 18" stroke

**NEW
PRODUCT**



**INDUSTRY FIRST
XL 9" FOOTPAD**

NO MORE CRANKING

Stop wasting time cranking a manual tongue jack over and over! With just the flip of a switch, the 3,500-pound capacity Power Tongue Jack quickly lifts and lowers a trailer. The Power Tongue Jack is quiet and efficient and features four LED lights so it's easy to set up camp day or night.

Features:

- 3,500-pound rating
- 30 AMP, 18" Stroke
- 4 LED lights provide excellent illumination
- Textured casing helps protect against chips and cracks
- Helical cut gears reduce noise and improve operating efficiency
- Kit includes mounting hardware, pins and manual crank handle



MANUAL JACKS



24" Scissor Jack Kit
(mounting hardware not shown)

Features:

- 5,000-pound load capacity
- Rust-prohibitive finish on all metal surfaces
- Universal weld-on or bolt-on application
- Available in one- or two-jack kits; crank handle included in two-jack kit only
- Each jack comes with four mounting screws



30" Scissor Jack Kit
(mounting hardware not shown)



Features:

- 2,000-pound load capacity
- Rust-resistant finish on all metal surfaces
- Comes with hardware mounting kit
- 14-3/4" stroke
- 2-3/8" outer, 2" inner tube

**2,000-pound
capacity
Sidewinder
Jack**
*(hardware not
shown)*

MATTRESSES/ BEDDING



THE PERFECT MATTRESS FOR EVERY NEED



Wake up relaxed and rejuvenated! Denver Mattress offers a complete line of RV lifestyle-inspired mattresses and bedding accessories. From weekend warriors to glampers and all of the outdoor enthusiasts in between, we have you covered.

Rest Easy Plush

- 4" high-density foam core offers support for proper sleeping posture
- 1.8-lb. high-density foam in quilt layers relieves pressure points
- Stretch knit cover is both soft and breathable



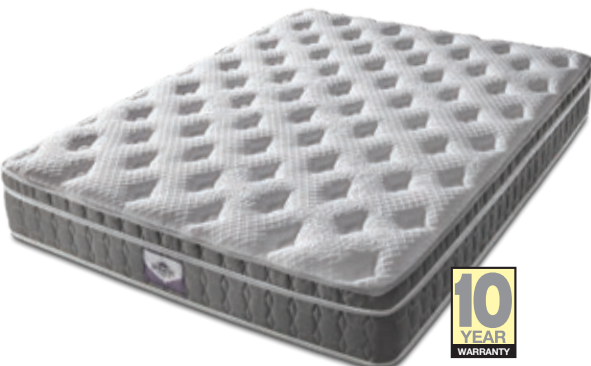
Rest Easy Euro Top

- 7" high-density foam core offers firm support for proper sleeping posture
- 2" Euro top style quilt relieves pressure points
- Luxury stretch knit cover is both soft and breathable
- All-foam construction reduces motion transfer and roll-together between sleeping partners



RV Supreme Euro Top Mattress

- 9" high-density foam core supports body to promote proper sleeping posture
- 2" Euro top provides luxurious comfort and relieves pressure points
- Luxury stretch knit cover is both soft and breathable
- 1.8-lb. high-density foam in quilt layers and plant-based foam provide long-lasting durability and comfort
- All-foam construction prevents motion transfer and roll-together between sleeping partners



RV Luxe

- 15 gauge twice tempered pocket coils
- 2" high quality latex foam
- 1.5" serene foam to cradle the body
- Hybrid construction reduces motion transfer
- Breathable and cooling plush luxury feel
- Adjustable base compatible



PROTECTING YOUR MATTRESS IS EASY



Bedding

Perfect-Fit Pillow Protector

- Washable pillow protector
- Protects against stains, soils and dust mites
- Machine washable, hypoallergenic
- Water resistant



Perfect-Fit Mattress Protector

- Washable mattress protector
- Protects against stains, soils and dust mites
- Machine washable, hypoallergenic
- Water resistant
- Fits up to 12" deep mattress



Perfect-Fit Mattress Pad

- Ultra soft microfiber fabric
- Unique drawstring design
- Machine washable, hypoallergenic
- Water resistant
- Fits up to 12" deep mattress



Sheet Sets

- Set Includes: fitted sheet, top sheet and 2 pillow cases
- Available in ivory



MICROFIBER SHEET SETS

- Ultra-soft brushed microfiber
- Extra-long top sheet
- Fits mattresses up to 12" deep
- Heavy-duty elastic perimeter for stay-put fit

ADJUSTABLE SHEET SETS

- Ultra-soft brushed microfiber
- Extra-long top sheet
- Adjustable drawstring fits unique mattress sizes
- Fits mattresses up to 12" deep

SWEET DREAMS

Our Dreamscape innerspring mattress series has long been the industry standard. All of our innerspring mattresses utilize a 312 bonnell coil unit that provides

the support and comfort needed for a good night's sleep. With multiple profile and topper options, there is a Dreamscape mattress to fit every need.

The Prestige Memory Foam

- Combines the luxury of memory foam with the support of an innerspring mattress
- 12-inch profile height
- 3-inch layer of memory foam topper for added comfort
- 312 bonnell coil count
- Upgraded quilt and knit ticking
- No flip design
- Pillow top

The Prestige Pillow Top

- Two-sided quilted top offers the most economical yet comfortable sleep surface
- 7-inch profile height
- 312 bonnell coil count
- Damask knit ticking
- No flip design

The Regency Quilt Top

- Two-sided quilted top offers the most economical yet comfortable sleep surface
- 7-inch profile height
- 312 bonnell coil count
- Damask knit ticking
- No flip design

The Sterling Smooth Top

- Economical and comfortable sleep surface
- 7-inch profile height
- 312 bonnell coil count
- Damask knit ticking
- No flip design



CONTOURS TO THE CURVES OF YOUR BODY

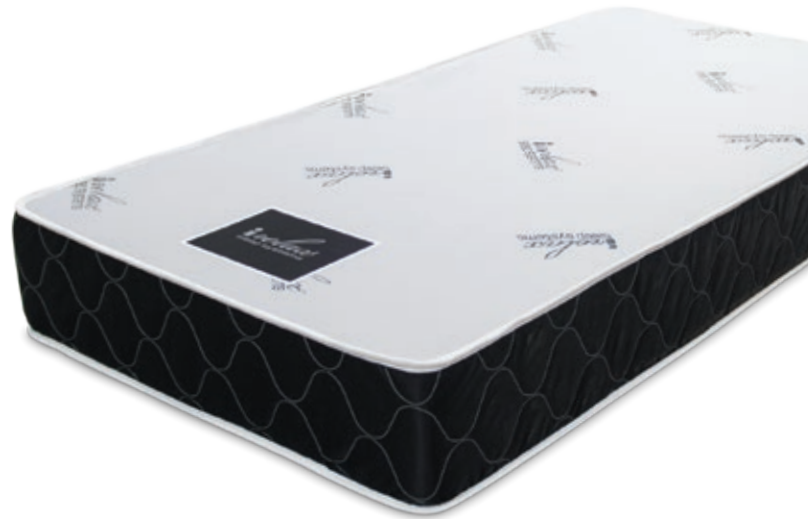
Enjoy a supportive embrace all night with the iRelax® Memory Foam Sleep Systems. Memory foam contours to the curves of your body and responds to heat and pressure to provide a custom sleep experience. A dense foam core supports

your body to relieve pressure points, reduces motion transfer between sleepers and provides firm edge-to-edge support. The ultra-soft knit fabric top adds an extra layer of luxurious, long-lasting comfort.



Features:

- Luxurious memory foam molds to body in response to heat and pressure
- Dense foam core
- Supports body along curves to relieve pressure points
- Reduces energy transfer between sleeping partners
- Provides complete edge to edge support
- Ultra-soft, ultra-durable circular knit fabric offers long-term comfort
- Lightweight – customers can reach under-bed storage
- Residential and special trailer sizes available



EVERGREEN_PERFORMANCE CORE

The Evergreen Performance Core can be incorporated in virtually any mattress construction we offer. The Evergreen Performance Core has been tested by UL and has generated superior test results compared to

standard foams. The Evergreen Performance Core was produced specifically to be a cost-effective and is an environmentally-friendly option that doesn't scrim on the most important thing – COMFORT!

Features:

- Black Label option offers sleek styling and upgraded comfort and quality
- Reduces weight by 30% or more
- Water resistant
- Hypoallergenic and anti-microbial
- Air permeable/breathable
- Lower ILD loss than traditional foam
- Inherently self-extinguishing
- Not treated with harmful chemicals or fire retardants like traditional foams or cottons
- Meets flammability standard 16 CFR Part 1633
- Improved ergonomics enhance overall health
- Full range of sizes
- Offered in smooth, quilted & pillow-top options



WAKE UP RELAXED AND REJUVENATED

Keep cool and comfortable all night with Ocean Blue gel foam technology. Gel foam embraces your body in response to heat and pressure and evenly distributes heat, lowering body temperature by up to two degrees. Research shows lowering body temperature even two degrees during sleep

can greatly improve a person's rest experience. A dense foam core supports your body to relieve pressure points, reduces motion transfer between sleepers and provides firm edge-to-edge support. The ultra-soft knit fabric top adds an extra layer of luxurious, long-lasting comfort.

Ocean Blue

Features:

- Cooling gel foam
 - Molds to body in response to heat and pressure
 - Evenly distributes temperature from head to foot
 - Lowers body temperature 2 degrees for better rest
- Dense foam core
 - Supports body along curves to relieve pressure points
 - Reduces energy transfer between sleeping partners
 - Provides complete edge-to-edge support
- Ultra-soft circular knit fabric offers long-term comfort
- Lightweight – customers can reach under-bed storage
- Residential and special trailer sizes available



iCOOL GEL® MEMORY FOAM_MATTRESSES

STAY COOL

The iCool gel memory foam mattress comes in a range of special trailer sizes and offers a comfortable night's sleep. Gel foam lowers body temperature by about 2 degrees on average. Traditional memory foam tends to trap body heat, making you sleep hot, especially during summer months. iCool mattresses are engineered to offer cooling comfort all night, regulating body temperature during any camping season. The iCool mattress offers excellent support and features a residential-style circular knit cover.



BUNK MATS

AFFORDABLE & STYLISH COMFORT



A comfortable night's sleep should never be compromised, even on a bunk mattress. That's why we offer several levels of comfort with our bunk mats. We offer upgraded ticking, quilting and quality filler to provide the best possible sleep experience.

Standard Bunk Mat Series

- Smooth or quilt top options
- Thickness to customer specifications
- Lightweight
- Foam or superloft core construction; superloft core utilizes Evergreen Performance Core technology
- Multiple size and radius corner options

Comfort Bunk Mat Series

- Upgraded ticking
- Super-soft foam offers the best sleep bunk mat surface available
- Quilted and non-quilted construction options
- Variety of height options
- Multiple size and radius corner options

Black Label Series

- Upgraded comfort and quality
- Sleek, contemporary styling
- Super-soft foam offers the best sleep bunk mat surface available
- Quilted and non-quilted construction options
- Variety of height options
- Multiple size and radius corner options

Futon Series

- Standard black ticking
- Flexible and lightweight
- Utilizes evergreen performance technology
- 5-7-inch profile



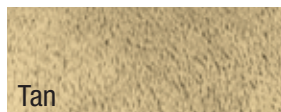
YOUR KIDS WILL BE HAPPY CAMPERS

The Teddy Bear Bunk Mattress by Lippert Components was designed to give kids a fun sleeping experience in the trailer. It's just like sleeping with your favorite stuffed animal. The Teddy Bear Bunk Mat is available in a variety of sizes to fit all bunk spaces and height profiles range from 2.5 to 4 inches. This luxurious bunk mat is made in the USA and features a hypoallergenic, water-resistant and mold-resistant core.

Features:

- Made in the USA
- Designed to give kids a fun sleeping experience
- Like sleeping with your favorite stuffed animal
- Multiple sizes and height profiles to fit your trailer bunk mat space
- Hypoallergenic, water resistant, mold resistant and recyclable

AVAILABLE COLORS



Teddy Bear Bunk Mattress



MATTRESSES/BEDDING

Teddy Bear Bunk Mattress Cover



Teddy Bear Bunk Mattress Cover

Features:

- Cover simply slips over the existing bunk mattress
- Helps protect your mattress from dirt and grime
- Provides a soft and ultra-comfortable sleep surface
- Made with 100% polyurethane synthetic fiber
- Easy to fold and compact for storage
- Available in multiple sizes

SLIDE-OUT MECHANISMS









FAST ASSEMBLY. SELF-TENSIONING.

Lippert Components, the industry's leading manufacturer of slide-out mechanisms, is proud to present its newest offering in this category, the FAST Track In-Wall Cable Slide. FAST stands for Fast Assembly and Self-Tensioning. We used this acronym because these are two issues major

complaints with similar systems on the market today. We listened to our customers and engineered a product that will greatly reduce installation time and increase overall product performance. Here's how FAST Track stands up to the competition:



F.A.S.T. TRACK

	The Competition		
Installation	Competition's slide-out system comes disassembled as a box of parts. Tolerances are not as forgiving, causing misalignment during installation and the need for adjustments prior to and after shipping to the customer.		FAST Track has fewer components to install and assemble. Installation tolerances are more forgiving. FAST Track's patent pending "floating ball" design was engineered to correct misalignments during installation. FAST Track comes preassembled and ready to install.
System Components	Competition's system comes with more components and has travel, height and width measurements when defining the product specifications increasing overall SKU count.		FAST Track requires 14 fewer fasteners and tedious part alignments to ensure proper installation. Less training is required for installation and overall SKU count is reduced because of the simplified design.
Cables	Competition's cables require multiple tension adjustments throughout the lifecycle of the system. Since these cables cross each other, it opens the door for potential cable wear.		FAST Track's patent pending 1/8" diameter oil-impregnated self-tensioning cables eliminate slack and the need for post installation cable adjustments. FAST Track's cables also don't cross one another, eliminating the potential for cable wear and fray.
Finish	Competition's system's design requires a large, bulky motor and chains that need to be hidden by an additional fascia piece adding more cost. This also handicaps the manufacturer on design flexibility.		FAST Track employs a dual motor column driven system so there are no bulky motors and chains to hide at the top of the interior fascia. This not only saves the manufacturer money, but gives a cleaner look on the inside of the unit AND allows for taller rooms.
Serviceability	Competition's motor locks the room in place, so in case of manual override situation, the slide room's entire fascia would need to be removed.		FAST Track's motors are located in the slide columns permitting motor changes in just a couple of minutes. Shorter, self-tensioning cables help eliminate the need for adjustments and stretching.
Water Weight	The competition's system, on average, weighs 58 lbs for the economy version and 65 lbs on their standard version.		An entire FAST Track system, on average weighs 32 lbs.

THE MOST TRUSTED SLIDE-OUTS IN THE INDUSTRY

We know how to maximize interior trailer space in a way that minimizes weight, simplifies the fitting process and safeguards the unit from outside elements. We manufacture more than 150,000 In-Wall Slide-Out systems every year and have more than 80 domestic and international slide-out patents.



Linc remote compatible

SLIDE-OUT MECHANISMS



Durable & Corrosion Resistant

Lightweight anodized aluminum resists rust better than systems with chains, cables and exterior mounting brackets.



Lightweight

Lightest slide system on the market keeps overall trailer weight down.



More Space

Slide-Out mechanism fits inside the wall cavity leaving more interior space. Other bulky systems require slide room fascia to cover motor and pulleys.



Obstruction-sensing Technology

Obstruction-sensing technology stops the slide-out before any damage can be done by obstructions.



Universal Fit

Other systems have stroke versus room-width restrictions, limiting coach design or requiring multiple slide mechanisms.



No Adjustments

In-Wall Slide-Out Systems never need complicated adjustments like cable systems do.



Leak Resistant

The 50/50 power split ensures both slide room sides properly compress seals. Independent side control allows different stroke lengths to compensate for bulb seals setting or wearing down unequally.



Smart Control Technology

Smart system continually monitors motor for safe operation and stops the slide-out if issue is detected.

MAXIMIZE INTERIOR SPACE

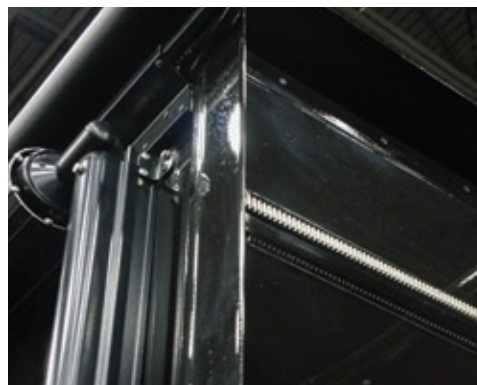
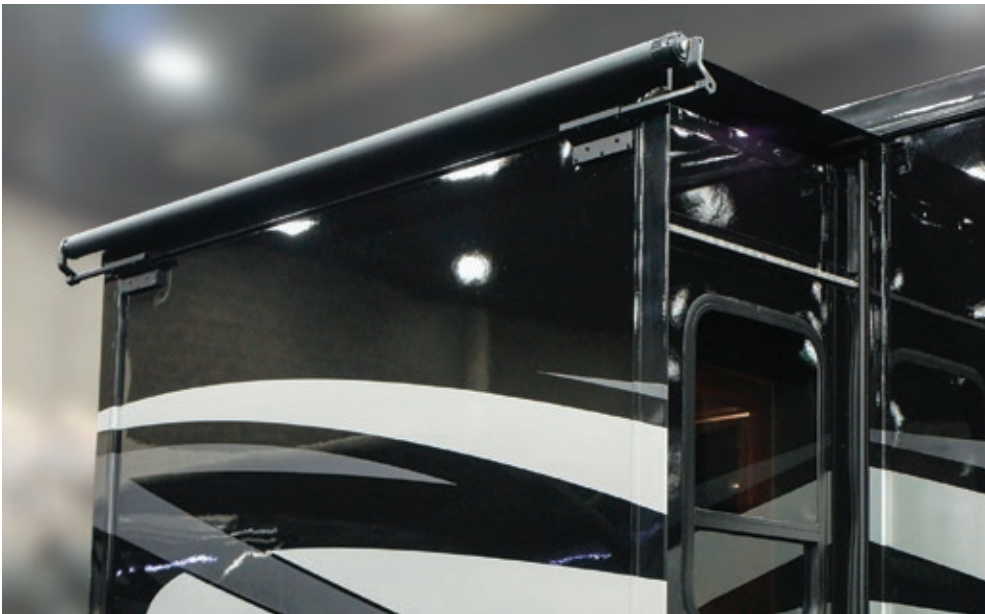
For years, Lippert Components has been the industry leader in innovative, versatile In-Wall Slide-Out technology, making cable slide-outs largely obsolete. Now we've developed the SlimRack In-Wall Slide-Out System which combines versatile above-floor placement, but also offers an attractive, seamless flush-floor option. The SlimRack's unique design features "floating" drive components that adjust for bumps and unbalanced weight

during slide-out operation, and a powerful motor brake keeps the room locked in position, preventing room creep or drift. Patented position-sensing technology allows a manufacturer to set ideal custom stop positions to meet different slide-out room specifications. The SlimRack has been rigorously tested to meet strict environmental performance, weight and cycle endurance and dynamic speed standards.



Quick Facts

- Drive components "float" to adjust for bumps and unbalanced weight
- Accommodates manufacturing variations
- Rollers hold weight
- Motor brake keeps room locked in one position, preventing room creep or drift
- Rigorously tested for consistent, long-term durability
- Patented position-sensing technology allows manufacturer to set ideal custom stop positions
- Secure four-corner seal prevents leaks
- Flush-Floor option
- Sleek, polished, high end look with no step up





Electric Slide-Outs

- Easy timing adjustment
- Easy to service and find parts
- Plastic wear pads eliminate arm roller noise; no lubrication required
- Continuous gear/teeth movement makes slide operation more consistent
- Completely assembled and ready to be installed
- Rigorously tested before installation



Hydraulic Slide-Outs

- One manual override instead of multiple in case of slide-out power issues
- One power source vs. multiple power sources
- Hydraulic systems can handle heavier rooms
- Less wiring needed to operate all slides
- One switch vs. multiple slide switches
- Smoother room movement

Flex Guard

- Protects slide-out plumbing, wiring and hoses during extension and retraction of slide room
- Can be installed on any slide-out system that uses a 1/4-inch steel rod or swing arm for the same application
- Single, double and triple applications
- All kits come with 8" mounting post with washer and five Flex Guard clips



SOLERA AWNINGS & ACCESSORIES





INTRODUCING
SOLERA UNIVERSAL
 2018 AWNINGS & ACCESSORIES

Solera makes it simple.

These icons help to indicate which Solera awning is right for you.



UNIVERSAL

This icon represents an available Universal application for your Solera, Dometic®* or Carefree™** awning, fabric or awning accessory.



POWER UP

This icon represents the ability to Power Up your old manual or power awning hardware with Solera 12V Power or 18V battery operated awning.



UPGRADE

This icon represents the ability to upgrade your current awning, fabric or awning accessory with Solera's awning components.



FIX IT

This icon represents a great opportunity to renew and refresh your broken or worn out awning, patio fabric, slide-out topper fabric, screen rooms, family rooms and ground center supports.



GO LARGE

This icon represents the only solution that gives campers 20% more shade than the standard 8' projection awning. Go Large, and maximize your outdoor living space.

Solera Universal Arms fit any of these brands:

Dometic®* (A&E)

Universal Hardware fits the following Dometic® 8' extension awnings models: 8500, 9000, 9100, Sunchaser and Weather Pro

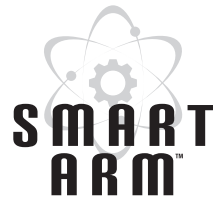


Universal Hardware fits the following Solera® 8' extension awnings models: Power 12V, Power 18V, Hybrid and Classic Manual

Carefree™**

Universal Hardware fits the following Carefree™ 8' extension awnings models: Spirit, Fiesta, Simplicity Traveler and Eclipse

*Dometic® is a registered mark and logo owned by Dometic Sweden and A&E is a mark used by Dometic Group.
 **Carefree™ and the Carefree logo are a mark and logo used by Carefree of Colorado, member of The Scott Fetzer Co.



AWNING OPERATION MADE EASY

The first ever programmable patio awning for your trailer is here. The Solera® Smart Arm™ 12V Power Awning incorporates several intelligent features sure to enhance everyone's camping experience. Best of all, these new features are all accessible from a weatherproof controller built right into the awning arm itself, making for easy and convenient access without having to go inside the trailer to operate the switches. It's not called the Smart "ARM" for nothing!



A 12V Power Extend and Retract Operation

Use either the nested arm controller or traditional switches for extend and retract operation. Traditional switches will override Smart Arm's exterior controller.

B Optional Awning Rail Lighting

Can be activated from the Smart Arm's nested controller without having to go inside the coach. Awning lights can be permanently set to on or off by simply pressing the lighting button. Light button is also used to activate infrared security option.

C Multi-Level Wind Sensing Technology

- Awning automatically retracts when inclement weather arrives.
- Toggle between three different levels of wind sensitivity, or completely deactivate the wind sensor altogether.

D One-Touch Safety Lock Button

Allows full access to all Smart Arm features. In order to change any setting on the Smart Arm, or even to operate the Smart Arm, the one-touch safety lock button must be initiated. Smart Arm's safety lock ensures that your settings are just how you left them.

E Infrared Security System

Arming the infrared security system provides peace and comfort when you're asleep. This feature will activate the optional IR Photocell Sensor providing added security and convenience. The awning lights will illuminate in the automatic setting when the photocell senses heat and motion.

18V BATTERY POWER PACK



Introducing the industry first Solera 18V Power Awning! Upgrading to a power awning has never been easier! An industry first, the Solera 18V Power Pack features a unique, rechargeable battery that fits right inside your Solera Power Awning arm and comes with everything you need to connect to the motor wire. This is the perfect awning for DIYers who don't want to spend the installation dollars to wire a 12V awning into their trailer. Better yet, the Solera 18V Power Awning extends and retracts faster than other power awnings. Not that you're in a hurry, but who wouldn't want the fastest awning on the planet?



Features:

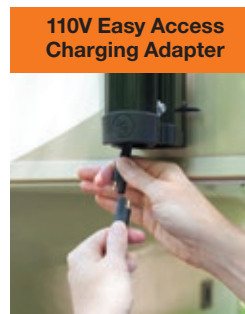
- Save 1-2 hours of additional installation expense as there is no need to wire this directly in to your trailer's power supply
- Waterproof switch offers easy, push-button operation
- Auto rain dump feature activates when rain water pools in the canopy, automatically lifting the awning arms to release the pooled water
- Operates 22-25 times before needing a simple plug-in recharge
- Exclusive, quick and simple independent pitch adjustment for relief from the sun at any point in the day
- Faster extend and retract time
- Includes 110V charging kit
- Easy DIY installation; no internal wiring needed to the trailer's main power source
- Easy access manual override, an industry first!* In case of power failure, simply use a power drill to extend or retract your awning in case of power failure
- **NEW!** Universal Solera 18V Power Hardware option allows for an easy UPGRADE on Dometic® (A&E)** and Carefree*** manual or power awnings

Hardware

TALL ARM

Adjustable Pitch

- Requires 69" unobstructed area from awning rail straight down
- Requires min. clearance of 2-1/2" between awning rail and top of entry door
- This hardware will roll the awning out to a pre-set pitch for maximum shade and ideal rain runoff
- Two-position pitch



UNIVERSAL ARMS AVAILABLE

Our Universal options fit standard Solera®, Carefree™ and Dometic® patio awning roller bars making Solera the Universal easy choice.

*Manual override not available on 2017 Forest River Cherokee

**Universal Hardware fits the following Dometic® 8' extension awnings models: 8500, 9000, 9100, Sunchaser and Weather Pro

***Universal Hardware fits the following Carefree™ 8' extension awnings models: Spirit, Fiesta, Simplicity Traveler and Eclipse

12V PUSH BUTTON CONTROL



Isn't it time you made the switch from a manual, spring-assisted awning to something easier? How many years have you daydreamed of a simplified camp setup? Stop wasting time and energy with manual awnings and POWER UP to a Solera 12V Power Awning. Featuring a premium, heavy-duty canopy and a one-handed adjustable pitch projection, the Solera 12V Power Awning allows for simple, effortless setup. With the push of a button, the awning's direct drive motor easily extends or retracts your awning's canopy. Simple, stress-free and with manual override functionality, the 12V Push-Button Control Awning takes the hassle out of camp setup and all but eliminates campsite setup frustrations.



Features:

- Push-of-a-button, automatic operation from inside or outside of your trailer
- Auto rain dump feature activates when rain water pools in the canopy, automatically lifting the awning arms to release the pooled water
- Easy access manual override, an industry first!* In case of power failure,

simply use a power drill to extend or retract your awning in case of power failure

- Exclusive, quick and simple independent pitch adjustment for relief from the sun at any point in the day
- With a range of unique awning styles, sizes and options including awning

lights, speakers and multiple fabric and hardware color options, Solera Power can offer you so much more than shade and shelter

- **NEW!** Universal Solera Power Hardware option allows for an easy UPGRADE on Dometic® (A&E)** and Carefree®*** manual or power awnings

Hardware

SHORT ARM



Adjustable Pitch

- Requires 60-1/2" unobstructed area from awning rail straight down
- Requires min. clearance of 6" between awning rail and top of entry door
- This hardware will roll the awning out to a pre-set pitch for maximum shade and ideal rain runoff
- Two-position pitch

TALL ARM



Flat Adjustable Pitch

- Requires 69" unobstructed area from awning rail straight down
- Requires min. clearance of 2-1/2" between awning rail and top of entry door
- This hardware will roll the awning out flat to allow for clearance over slides, and allows quick and easy pitch adjustment at either side of the awning
- Infinite adjustment



EASY ACCESS MANUAL OVERRIDE

*Manual override not available on 2017 Forest River Cherokee

**Universal Hardware fits the following Dometic® 8' extension awnings models: 8500, 9000, 9100, Sunchaser and Weather Pro

***Universal Hardware fits the following Carefree™ 8' extension awnings models: Spirit, Fiesta, Simplicity Traveler and Eclipse

EXTENDED SHADE & RELIEF FROM THE SUN



The Solera XL Awning features an industry first 9' 8" projection, making it perfect for taller trailers and trailers with a slide-out under the awning. Trailers continue to get taller and taller, so it can be difficult to get the shade you need from a standard 8' projection awning. Not only that, but many brands now feature slide-outs under the awning, which can really limit your shaded patio area. Choose a Solera Power XL Awning to enjoy 20% more shade than a standard 8' projection pitch! Featuring an adjustable projection pitch sleeve, the Solera XL Awning can be pitched at multiple points to block the sun at any time of day. The two-stage projection pitch arms also provide added strength and support for your awning, making the XL Awning one of the best values on the market.



Features:

- 9'8" projection offers 20% more shade than standard 8' projection awnings
- Push-of-a-button, automatic 12V operation from inside or outside your trailer
- Adjustable two-position pitch arms provide added strength and offer multiple adjustments, offering shade at any time of day

NOTES: Solera XL arms require XL roller assemblies. Vinyl and Acrylic with Solera Shield not available on XL awnings. 18V Battery Power Pack not available for Solera XL awnings.

Hardware

XL ARM XL

Flat Adjustable Pitch

- Requires 78" unobstructed area from awning rail straight down
- Requires min. clearance of 4-1/2" between awning rail and top of entry door
- This hardware is configured to operate a 9'-8" projection canopy. It will roll the awning out flat to allow for clearance over slides, and allows quick and easy pitch adjustment at either side of the awning
- Two-position pitch

20% MORE SHADE



XL & STANDARD SIZES AVAILABLE

- Adjustable rust-resistant aluminum bows
- Keeps canopy from flapping in the wind
- Increases clearance over entry door
- Prevents canopy from sagging
- Stops water from pooling
- Enhances appearance



SETS UP AND STORES IN A FAST ONE-STEP OPERATION



The Solera Hybrid Awning combines the best of both worlds. Featuring a simple crank operation, the Solera Hybrid Awning extends and retracts just like a Power Awning, except you supply the power. The next best thing to a fully powered awning, the Hybrid allows you to skip the potential hassle and installation cost of running wiring and acts as a do-it-yourself upgrade from a manual spring-loaded awning.



Features:

- Simple crank operation makes for fast one-step setup
- Auto rain dump feature – if water pools in the canopy, the arms will release it
- Exclusive, quick and simple independent pitch adjustment – enjoy full or partial extension
- Includes crank wand
- Designed to provide optimum pitch when used over slide-outs
- **NEW!** Universal Solera Hybrid hardware allows for an easy and inexpensive upgrade to Dometic® (A&E)* and Carefree** spring-assisted patio awnings



Hardware

SHORT ARM



Adjustable Pitch

- Requires 60-1/2" unobstructed area from awning rail straight down
- Requires min. clearance of 6" between awning rail and top of entry door
- This hardware will roll the awning out to a pre-set pitch for maximum shade and ideal rain runoff
- Two-position pitch

TALL ARM



Flat Adjustable Pitch

- Requires 69" unobstructed area from awning rail straight down
- Requires min. clearance of 2-1/2" between awning rail and top of entry door
- This hardware will roll the awning out flat to allow for clearance over slides, and allows quick and easy pitch adjustment at either side of the awning
- Infinite adjustment

UNIVERSAL ARMS AVAILABLE



Our Universal options fit standard Solera®, Carefree™ and Dometic® patio awning roller bars making Solera the Universal easy choice.

*Universal Hardware fits the following Dometic® 8' extension awnings models: 8500, 9000, 9100, Sunchaser and Weather Pro
 **Universal Hardware fits the following Carefree™ 8' extension awnings models: Spirit, Fiesta, Simplicity Traveler and Eclipse

TRADITIONAL MANUAL SPRING ROLL UP



Classic design, classic operation. The Solera Classic's manual spring-assisted design has been an industry favorite for decades. The rugged Solera Classic extends and retracts in just a few easy steps. Simply release the travel locks on each arm, loosen the rafter knobs, use the pull cane to unlock the roller, then hook the pull strap and walk it out to unroll the awning. Once extended, set the tension, tighten rafter knobs and raise the awning arms to whatever pitch you want for shade and water runoff. You can also detach the arms from the bottom bracket and rotate them to a vertical "carport" position. This carport position makes it easy to attach accessories like the Solera Screen Room and Solera Family Room®.



Features:

- Traditional manual spring-assisted roll up operation
- Arms detach from bottom bracket and easily swing to "carport" position providing varied pitch options to block the sun at any time of the day
- Great value for replacing any Dometic®, Carefree™** or Solera® spring-loaded manual awning
- Simple standard manual operation: Unlock with included wand, unroll with strap, set the braces and raise the arms
- **NEW!** Universal hardware now makes Solera the easy choice for repairing or replacing your old spring-assisted patio awning. Solera Universal Classic Hardware fits into Dometic® (A&E) and Carefree™** roller assemblies with ease

Hardware

SHORT ARM

- Rail to floor line 63"-68" from awning rail straight down

STANDARD ARM

- Rail to floor line 68"-81" from awning rail straight down

LONG ARM

- Rail to floor line 81"-96" from awning rail straight down

UNIVERSAL ARMS AVAILABLE
 Our Universal options fit standard Solera®, Carefree™ and Dometic® patio awning roller bars making Solera the Universal easy choice.

* Universal Hardware fits the following Dometic® 8' extension awnings models: 8500, 9000, 9100, Sunchaser and Weather Pro
 ** Universal Hardware fits the following Carefree™ 8' extension awnings models: Spirit, Fiesta, Simplicity Traveler and Eclipse

GIVE YOUR SLIDE-OUTS EXTRA PROTECTION



Give your slide-outs extra protection from debris and water infiltration with Solera Sliders. These attractive and economical slide-out awnings automatically retract and extend with your slide-out and prevent block leaves, bird droppings, branches and more from damaging slide-out seals.



Features:

- Attractive and economical protection for your slide-out
- Full coverage over the slide-out roof and the trailer sidewall slide-out opening
- Blocks leaves, bird droppings, branches and debris
- Automatically retracts and extends with slide-out
- Fits slides ranging from 66" to 192" long and extending up to 48"
- Comes complete with awning rail and all mounting brackets
- Choose from multiple vinyl & acrylic fabric colors
- Available with the Solera Shield

		Competitor A	Competitor B
Fits slide-outs ranging from 66" to 192" in length	✓	✓	✗
(1) Part number that comes complete with awning rail, topper and all mounting brackets	✓	✗	✗
Multiple colors and options available	✓	✗	✗
Standard 13.5 oz vinyl fabric	✓	✓	✓
No anti-billowing device needed	✓	✗	✗
Heated wedge welding fuses vinyl together for strong, leak-resistant seams	✓	✗	✗
Accommodates slide-outs up to 48" wide	✓	✗ 42"	✗ 42"
Flexible placement; can be installed up to five inches above slide box trim	✓	✗	✗
NEW! Available (8) custom colors for the hardware to custom match your investment	✓	✗	✗

GIVE YOUR AWNING EXTRA SUPPORT



Give your awning extra support and a better angle for water runoff with the Solera Awnbrella. Perfect for destination campers who like to leave the awning extended for long periods, the patented rust-resistant aluminum bows hold fabric taut and arched so water doesn't pool and debris can easily run off. Now you won't have to camp with one end of your awning pitched lower than the other end. Solera Awnbrellas also complement Solera Screen Rooms and Family Rooms.

Features:

- Adjustable rust-resistant aluminum bows
- Keeps canopy from flapping in the wind
- Increases clearance over entry door
- Prevents canopy from sagging
- Stops water from pooling
- Enhances appearance



SOLERA®_UNIVERSAL SLIDER FABRICS



Features:

- Our slide topper fabric is universal, fitting all three major patio awning brands
- Premium, 13.5 oz fabric - not the competition's 10 oz fabric
- Best of all, we offer a cut-to-fit option in a "Kleenex" style box, complete with easy-to-use roller. Just extend out the amount of fabric you need and cut
- Roll stays in place with plastic reel (competitors do not offer this)
- **5-year warranty** on Solera Universal Slider fabric

		Carefree	Dometic®
The box includes plastic reels that strengthen the box for shipment and hold the fabric in place, allowing for easy roll out	✓	✗	✗
Standard 13.5 oz vinyl fabric	✓	✗ 10 oz only	✗ 10 oz only
Perforation lets you easily pull out the fabric you need, safely keeping the rest of the fabric in the box and protected	✓	✗	✗
Heated wedge welding fuses vinyl together for strong, leak-resistant seams	✓	✗	✗
The fabric box stays closed after each use, protecting it from dirt, grime and other elements that could damage the product	✓	✗	✗
5-year warranty	✓ 5-year	✗ 1-year	✗ 1-year
Available in Black and White	✓	✓	✓

*Dometic® is a registered mark and logo owned by Dometic Sweden and A&E is a mark used by Dometic Group.
 **Carefree™ and the Carefree logo are a mark and logo used by Carefree of Colorado, member of The Scott Fetzer Co.

ACCESSORIES TO ENHANCE YOUR EXPERIENCE



Solera Fabric Light Kit

Destination Awning models and patio replacement fabrics feature a NEW integrated light cord sewn right into the awning hem. The flexible Solera Fabric Light Kit slides into the light cord by the coach side wall and under the awning. The innovative design allows you to enjoy dramatic lighting outside the trailer when the awning is extended or retracted.



Solera Shield

The built-in Solera Shield is available on replacement slider and patio awning fabrics. It provides elegant and practical protection for your Solera vinyl or acrylic awning canopy. As the awning retracts, the aluminum Solera Shield automatically rolls up around the fabric to protect it against the elements during travel. Be sure to order your Solera Shield to match your hardware.

NOTE: Solera Shield not available on Solera XL awnings



Solera Ground Support

Commonly lost or damaged, Solera Ground Support bars fit all three major awning brands. This aids you in support for the awning roller and allows more stability when you add screen rooms and family rooms to your awning. Stabilize your awning and prevent the roller from sagging with Solera Ground Support.



Solera Awnings Cradle Support

The Awning Cradle Support works with power or manual awnings to support the roller assembly when in the travel position; support automatically accepts and releases the roller assembly as it extends and retracts.

Solera's premium awning replacement fabric is head and shoulders above other brands with super heavy-duty materials, a **5-year warranty**, heat-welded seams and more. Our canopy fabric also features an integrated light track so you can easily add the Solera Fabric Light Kit and enjoy LED lighting at the campsite.



Select from These Patio Awning Replacement Choices:



All Vinyl

- Heavy-duty 13.5 oz fabric
- Cold-crack tested to -25° F
- Nine color choices



Vinyl Canopy with Solera Shield

- Painted Solera Shield is available in black, white, and two custom colors

























Woven Acrylic Canopy with Solera Shield

- Woven fabric is breathable, so the area under the canopy may stay cooler than vinyl canopies
- Five color choices
- Mildew-resistant fabric
- Comes complete with Solera Shield

Features:

- **5-year warranty** vs. 1-year with the competition
- Universal - it works with all three major awning brands
- Welded, state-of-the-art construction at critical points of the patio awning
- Premium 13.5 oz fabric used, not 10 oz base fabric
- Great colors to match your RV, and ability to customize your rig
- Our canopy fabric features an integrated light track so you can easily add the Solera Fabric Light Kit to light up your patio

		Carefree	Dometic®
Heavy-duty 13.5 oz fabric			
5-year prorated warranty	 5-year	 1-year	 1-year
Integrated track for LED light kit attachment			
Heat-welded fabric seams prevent leaks			
Universal fit for all awnings			
Same day shipping (in by 1:00 EST, out same day)			
Free standard UPS shipping in the continental United States			

*Dometic® is a registered mark and logo owned by Dometic Sweden and A&E is a mark used by Dometic Group.
 **Carefree™ and the Carefree logo are a mark and logo used by Carefree of Colorado, member of The Scott Fetzer Co.

SOLERA®_UNIVERSAL FABRIC OPTIONS

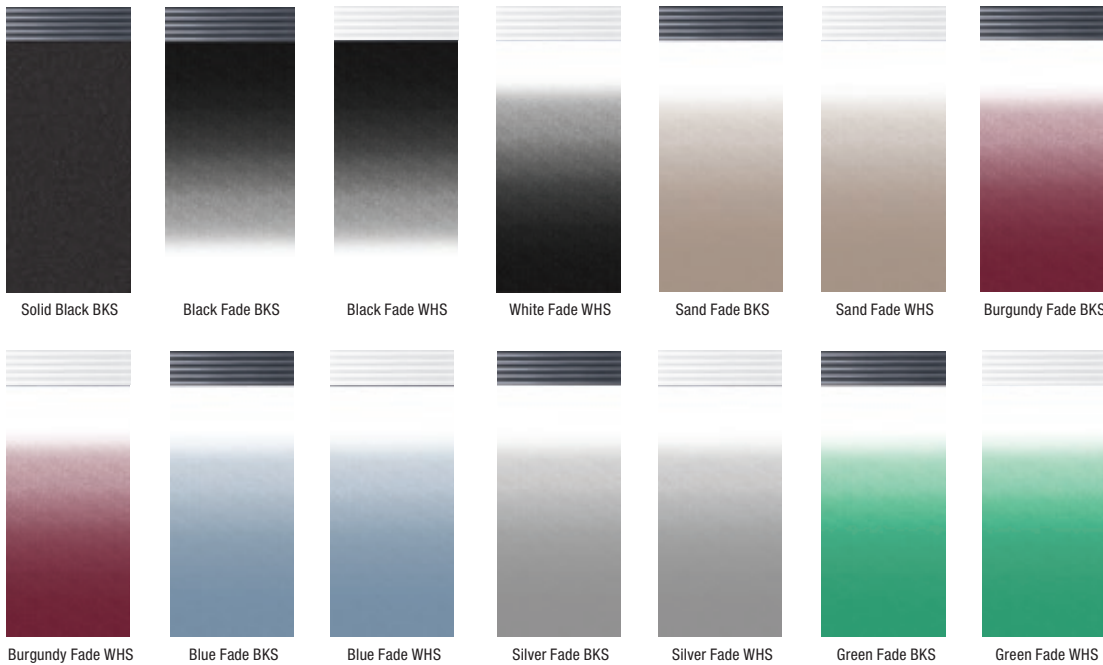
SOLERA: SHIELD

The built-in Solera Shield is available on replacement slider and patio awning fabrics. It provides elegant and practical protection for your Solera vinyl or acrylic awning canopy. As the awning retracts, the aluminum Solera Shield automatically rolls up around the fabric to protect it against the elements during travel. Be sure to order your Solera Shield to match your hardware.

NOTE: Solera Shield not available on XL



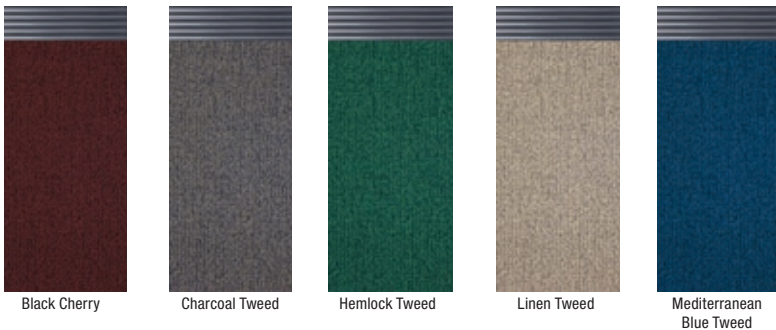
SOLERA: UNIVERSAL VINYL WITH SOLERA SHIELD OPTIONS:



Special Order Canopy Option:
 - Vinyl Fabric with Solera Shield
 (Allow for standard lead time)

NOTE: The color of the Shield is noted as BKS meaning black; or WHS, meaning white. Solera Shield not available on XL

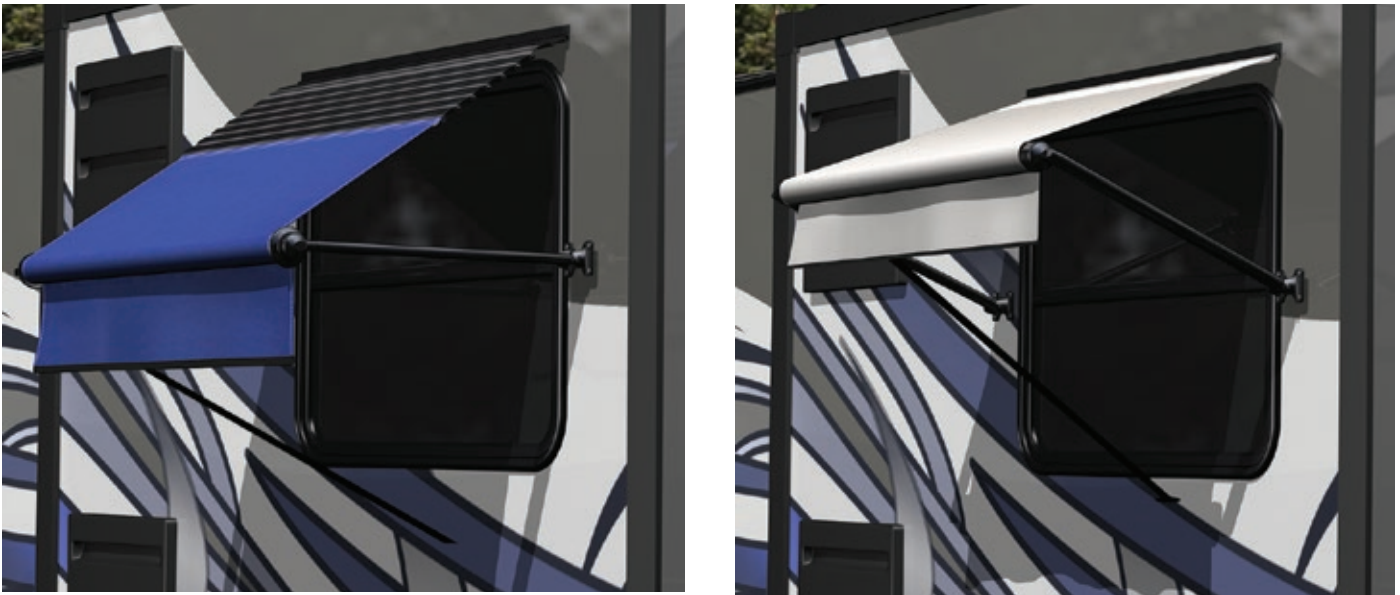
SOLERA: UNIVERSAL ACRYLIC FABRIC WITH SOLERA SHIELD:



Special Order Canopy Option:
 - Woven acrylic fabric with Solera Shield
 (Allow for standard lead time)

NOTE: The color of the Shield is noted as BKS meaning black; or WHS, meaning white. Solera Shield not available on XL

SOLERA AWNINGS & ACCESSORIES

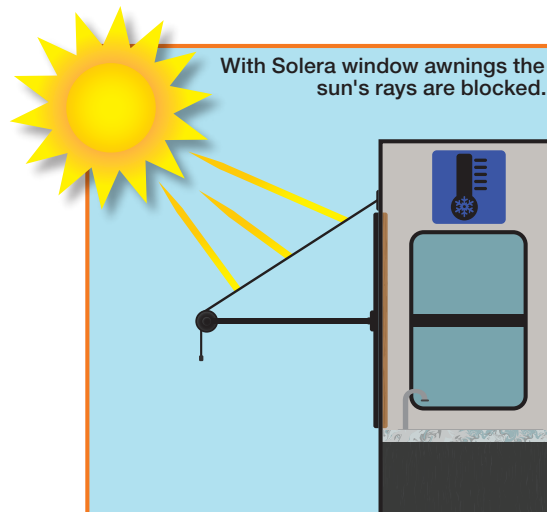
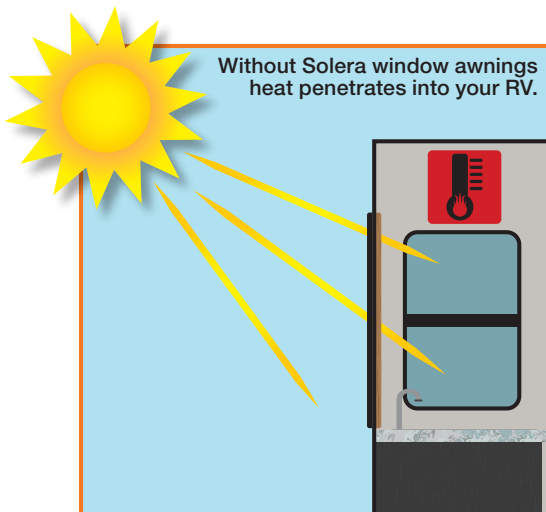


SOLERA: WINDOW AWNINGS

Keep the heat out, and save on AC with Solera Window Awnings. Just use the pull cane to hook the pull strap, and pull to extend the awning. Secure the strap loop onto a hook on the RV wall to keep the awning extended. Go for the best value and the best look, and cover two windows with one window awning. Solera window awnings are available in standard arm and canopy sizes for windows that are under 33" in height and in XL sizes for windows over 33". Standard window awning arms are 18" long so they'll have an 18" projection, and XL window awning arms are 30" long so they'll have a 30" projection. Order arms and roller separately.



KEEP THE HEAT OUT AND SAVE ON AC



STEPS



THE MOST STABLE STEP ON THE MARKET



The SolidStep's innovative design permits the step to operate through a wide range of ride heights without the need to adjust leg extensions. The design also ensures that the steps stay parallel to the ground, reducing the potential for slipping

or falling during use. The SolidStep's design permits the step to stow inside of the entry door, keeping road debris and corrosion away while simultaneously permitting continuous skirt metal on the trailer, enhancing the aesthetics of the coach.

Featuring a Lift Assist Strut that makes lowering & raising your SolidStep easy!



SolidStep conveniently folds up into the doorway when not in use.



Threshold panel behind the top step to protect the trailer sidewall from damage

13" XL top tread depth

Aluminum treads that hold up against the elements

8.5" lower tread depth

Extendable legs and feet contact the ground for maximum stability

SolidStep®

Easily installs into existing door hardware and threshold.



Two safety latches on either side of SolidStep securely locks it to the RV entry door frame.



Convenient handle makes it easy to disengage the safety latches.



Only one hand needed to operate the handle.



While holding the handle, release the SolidStep from the door jamb. Slowly lower the step with both hands firmly supporting SolidStep.



Continue lowering SolidStep to the ground.



For uneven ground surfaces, remove pin on the extendable legs to adjust leg length.



Pivoting foot provides for a solid foundation on sloped terrain.

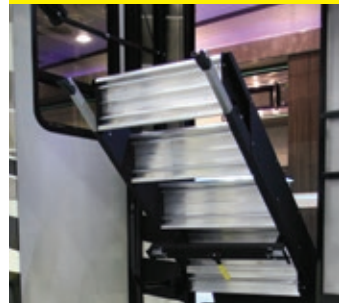


SolidStep® LIFT ASSIST

While holding the handle, release SolidStep with Lift Assist from the door jamb.



The Lift Assist strut keeps the SolidStep from dropping completely when disengaged from the door-jamb and will even support its own weight.



Because of the Lift Assist strut, the weight of the SolidStep allows for minimal effort on lowering.



Lowering the SolidStep with Lift Assist can even be done with one finger.



AUTOMATIC EXTENSION AND RETRACTION

You don't have to settle for a standard manual trailer step. Upgrade to the sleek, stylish and lightweight Tread Lite Power Step to enjoy fast, automatic operation, weatherproof components and LED lighting.

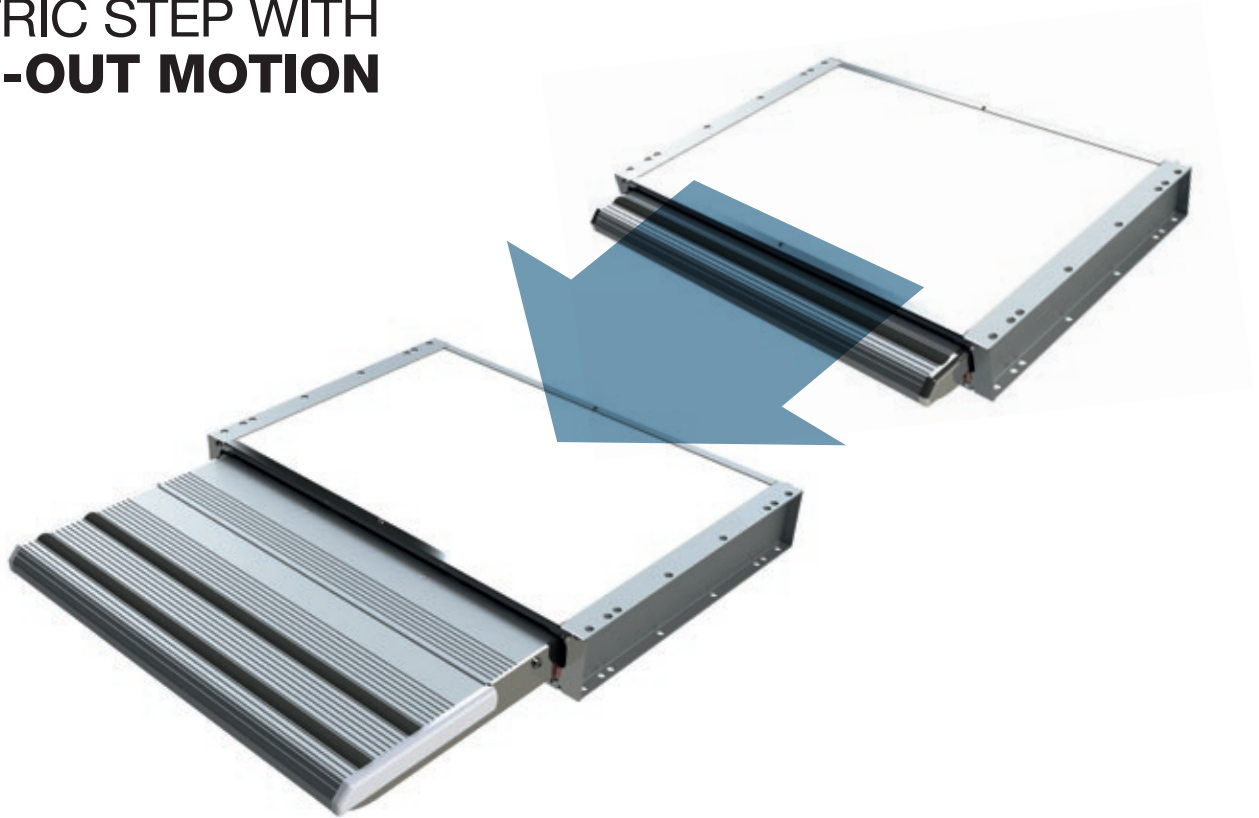
Available in a single, double or triple configuration, the Tread Lite Power Step features non-slip coating for excellent traction and obstruction-sensing technology that stops the step if anything is in its way.

Features:

- Powerful, heavy-duty motor provides smooth operation
- Weatherproof components ensure durable operation
- 13 pounds lighter on average than the competition
- Obstruction-sensing technology prevents step damage
- Non-slip coating provides excellent traction
- LED lighting makes it easy to see step location at night
- Sleek, stylish and significantly lighter than its steel counterpart
- 8.5" step rise and tread depth
- Available in single & double configurations



ELECTRIC STEP WITH SLIDE-OUT MOTION



Features:

- 80% built of plastic parts and 20% in steel and aluminum. The innovative system, mixing these 3 materials, is the result of a long process of R&D and test to obtain a product with high quality and durability, resistant to corrosion and extremely lightweight.
- High power 12V engine, working on ball bearings, with thermal breaker in case of excessive strain
- Sliding on special patented guides for a frictionless slide even after a long period where it's not been used
- Waterproof sensor for "open step" warning light integrated in the motor carter
- Compact size
- Cable included and already assembled
- Footboard in anodized aluminum with anti-slip rubber and without areas where the water can stagnate
- Patented quick manual release system in case of an emergency
- High motion speed: from open to close 2.5 seconds
- Energy Input: 2.5 A

STRENGTH & DURABILITY LONG TERM



Kwikkee brand power steps have been the favorite of RVers for more than 40 years. Kwikkee steps are versatile, durable and time-tested. Each 300-pound-capacity step is made in America and features air

pressed rivets in the pivot points instead of bolts for long-term strength. Kwikkee steps automatically extend and retract when the door is opened or closed and also feature a reflective strip for added safety.

The Revolution Step

QUICK FACTS

- Extra sturdy
- 30 percent lighter than competing power steps
- Single and double step configurations
- Only weighs 24 pounds



The Kwikkee Step

QUICK FACTS

- Supports up to 300 pounds
- Heavy-gauge steel, powder-coated for a long-lasting finish
- 2V DC motor with sealed connections
- Solid steel drive rods and stainless steel bushings
- Reflective strips for added safety
- Made in the USA



STEPS

TOWING



FlexAir

Trailair 

omit airt of other

THE MOST COMFORTABLE TOWING EXPERIENCE

Flex Air

The Flex Air Pin Box unifies time-tested Trailair® Air Ride™ technology with the Rota-Flex™ pivoting head to reduce chucking and vertical tug-of-war between a fifth-wheel trailer and tow vehicle, providing a more comfortable ride. Flex Air utilizes an air bag and rubberized compound to absorb road shock and vibrations, an integrated oil shock absorber to dampen kickback, and a pivoting head to control chucking.



1 Air ride technology
The air bag acts as a buffer between the tow vehicle and coach to absorb road shock and vibrations.



2 Oil shock
As the air bag absorbs road shock and vibration, the oil shock absorber handles rebound action, dampening kickback.



3 Pivoting head
The heavy-duty pivoting head in the lower jaw controls the vertical tug-of-war between the tow vehicle and fifth-wheel trailer.



4 Rubberized compound
The durable rubberized compound provides an additional buffer to help protect the fifth-wheel trailer from jarring motion.

DAMPEN ROAD SHOCK & KICKBACK

AirRide™



Fits most standard mounting hardware and significantly dampens road shock to protect the trailer

The Trailair® Air Ride Pin Box acts as a buffer between the tow vehicle and trailer, arresting the impact of road shock and stabilizing towing performance. How? Simple — unique scissor action allows the air bag to absorb road shock and vibration while the gas shock handles any rebound or bounce effect, providing a better, smoother ride.



Rubber air bag absorbs road impact and vibration

Shock absorbs recoil and rebound caused by road impact and vibration

Features:

- Gas shock and air bag combination absorbs road shock and controls fore-to-aft coach movement
- Prevents damage caused by road shock and vibrations, potentially saving owners from costly repairs
- Improved ride
- Replaces all popular LCI pin boxes: 16K (1621), 18K (1621), 21K long jaw (1621), 21K (1716), 18K (0719) and 21K (1116)



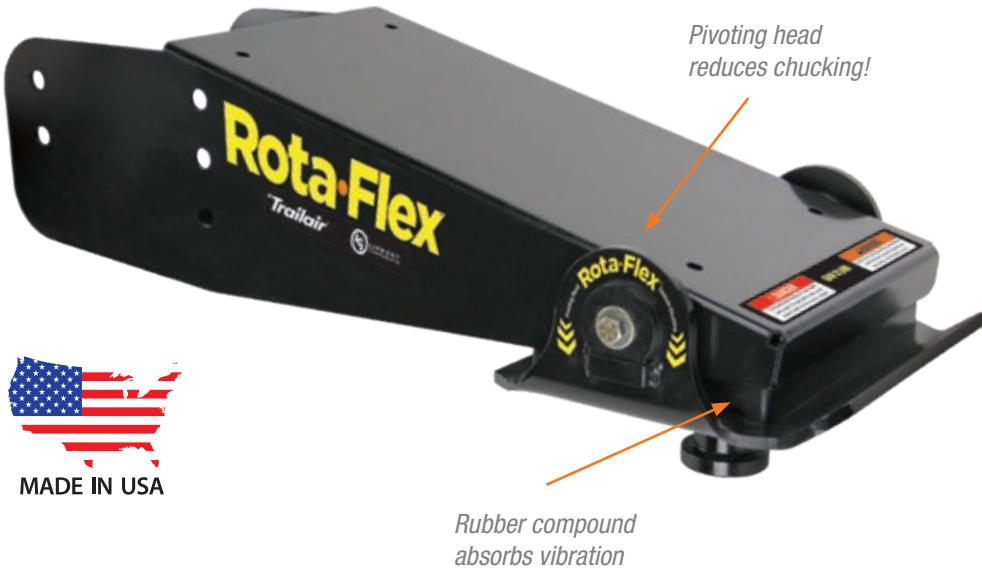
Long-style Air Ride Pin Box



Medium-style Air Ride Pin Box

CONTROL CHUCKING & DAMPEN SHOCK

Rota-Flex™

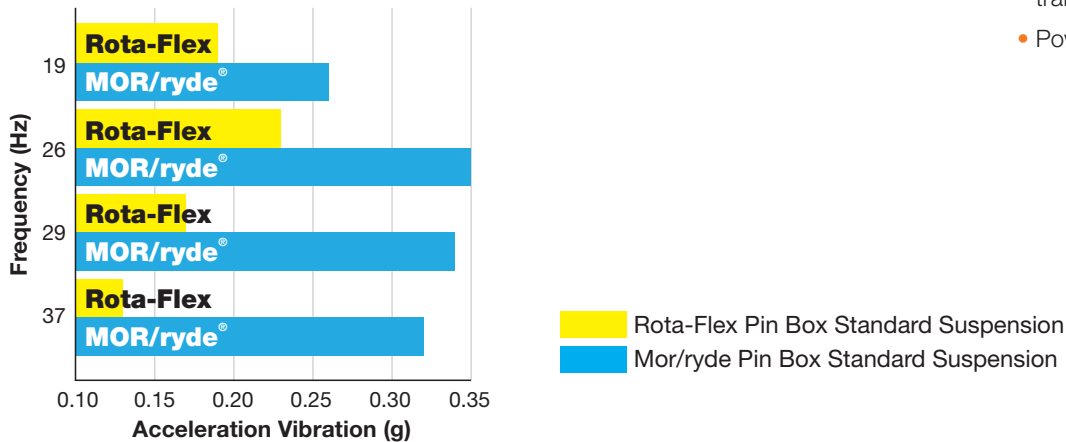


From the same minds at Trailair® that brought you the Air Ride™ Pin Box and the Equa-Flex™ rubberized equalizer, comes Rota-Flex, a rubberized and pivoting pin box designed to enhance and smooth your ride. You've put a lot into your investment, so protect it with Rota-Flex.

Features:

- Reduces vibration more than 2X the competition
- Pivoting head significantly reduces fore-to-aft coach movement (chucking)
- Rubberized torsion compound absorbs motion and vibration caused by road shock
- Absorbs road shock that would otherwise be absorbed by your trailer, preventing costly damage
- Powder-coated lower jaw

Rota-Flex vs. MOR/ryde® Pin Boxes Accelerated Frame Chatter



GOOSE BOX™_BY REESE®

The Reese Goose Box replaces a traditional pin box so the trailer works with the truck gooseneck hitch. It features built-in suspension to protect the trailer frame.



Features:

- Rated at 16,000-pound capacity utilizing both CSA & J2638 test standards
- Independently tested and proven to provide a better ride than king pin bolt-on adapter solutions
- Fifth Airborne technology absorbs shock for a smoother driving experience
- Air bag, dual shocks and rubber bumpers provide multi-directional shock absorption
- Bulldog gooseneck coupler technology
- King pin styling
- Air pressure relief valve prevents overfilling
- Reduced stress on trailer system verified by independent lab testing
- Endorsed by LCI for use with our frame systems
- Fits LCI #1621 wing set and #1716 wing set (when ordered with spacer kit #61301)

READY FOR THE LONG HAUL

Designed and engineered with industry leading Trailair® technology, Turning Point makes the mobile lifestyle entry cost point lower for prospective new fifth-wheel owners. No longer do prospective fifth-wheel buyers need to purchase a new (250 series or higher) pickup truck to

tow their new rig. With a 16,000-pound GVWR rating, Turning Point has plenty of capacity to tow today's mid and lightweight fifth-wheels, all using the same truck that many prospective owners already use daily.



Features:

- Turning point moves the fifth-wheel pivot point 22 inches rearward creating extra clearance, making it an ideal solution for half-ton, short bed pickup trucks
- Turning point offers a 90-degree “plus” turning radius. This makes turning corners and parking the fifth-wheel easier than ever
- Lippert Components engineering approved – will not void chassis warranty as some aftermarket pin box solutions will
- SAE dynamic tested and approved; Turning Point tested at two times the SAE required static load in all directions
- 16,000-lb GVWR or lower capacity
- Radius side plates and injection molded, textured hood for updated aesthetics
- Designed for OEM installation only; not for aftermarket installation
- Includes dealer pre-delivery locking plate

WINDOWS



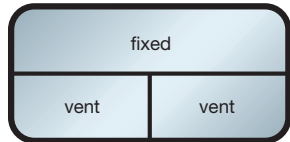
SLEEK, AUTOMOTIVE STYLING

The 3000 Series Bonded Window has an all-glass, flush exterior that provides a sleek, polished look to enhance the appearance of any

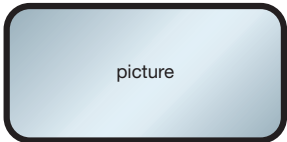
trailer. Its hidden hinge allows ample ventilation and its glass penciled edge perimeter lends added aesthetic sophistication.

Features:

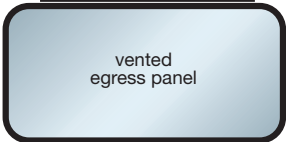
- Automotive bonding technology
- Updated, modern design for today's trailer
- Frameless construction yields an all-glass interior
- Standard clamp ring installation for various wall thicknesses
- Available with single-and dual-glazed panels
- Removable screens on all vents



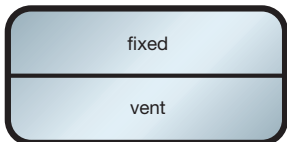
300SVD
 Min: 36-1/8" x 30-1/8"
 Max: 72" x 48"
 17" vent height



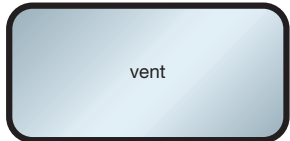
300PW
 Min: 12" x 12"
 Max: 72" x 48"
 alt. Max: 48" x 72"



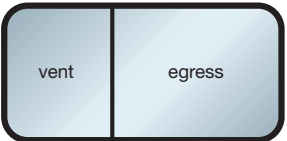
300VEPW
 Min: 27" x 20"
 Max: 36" x 30"



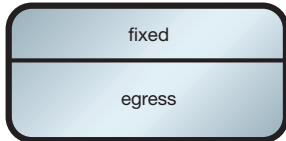
300SV
 Min: 12-3/8" x 30-1/8"
 Max: 36" x 48"
 17" vent height



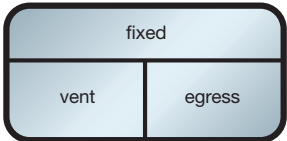
300SVD
 Min: 12-3/8" x 14"
 Max: 36" x 30"



300FVSE
 Min: 36-1/6" x 20"
 Max: 72" x 30"



300EPW
 Min: 27" x 30-1/8"
 Max: 30" x 50"



300SVSE
 Min: 36-1/6" x 30-1/8"
 Max: 72" x 48"



300FVD
 Min: 36-1/8" x 14"
 Max: 36" x 30"

THE INDUSTRY STANDARD FOR YEARS

The attractive design of our awning windows give any trailer an instant facelift. Reinforced vinyl seals help keep

the interior dry in any environment. LCI awning windows are also available in full, side and picture egress windows.



Vented exit picture window option



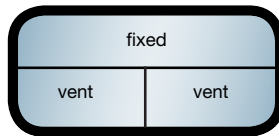
2000PPP

Min: 48" x 22"
Max: 72" x 48"



2000SES

Min: 34" x 19"
Max Width: 65"
Max Height: DSB 36"; SSB 30"



2000SVD

Min: 18" x 15"
Max: 48" x 50"



2000VEPW

Widths 30" & 36"
Max Height: 29"



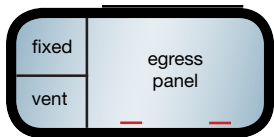
2000PW

Min: 12" x 12"
Max: 72" x 46" (or 46" x 72")



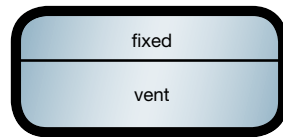
2000EPW

Min: 26" x 19"
Max Width: 48"
Max Height: DSB 36"; SSB 30"



2000SVSE

Min: 36" x 19"
Max Width: 72"
Max Height: DSB 36"; SSB 30"



2000SV

Min: 18" x 15"
Max: 48" x 50"

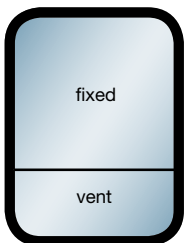
Features:

- Large mounting flange for easy installation
- Fixed pane is drop-in glazed for easy replacement
- All operating hardware is zinc or corrosion-resistant steel
- Sloped sill for better water drainage
- Offset weep system reduces water and wind penetration
- Weather exposed vinyl seals are nylon reinforced to control shrinkage
- Removable screens on all vents
- Standard clamp ring installation available for various wall thicknesses
- Ask sales representative for available insulated glass

SLEEKER & MORE EFFICIENT

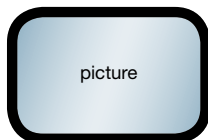
Through intense design and engineering, we have developed a cleaner, more efficient sliding window. With no exposed exterior fasteners, the 8800 series has a

smooth, automotive appearance. Improved interior engineering improves water management and a redesigned screen improves retention and functionality.



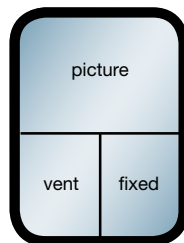
8800VS

Full exit minimum exit size
27" x 20"



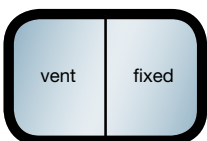
8800PW

Full exit minimum exit size
27" x 20"



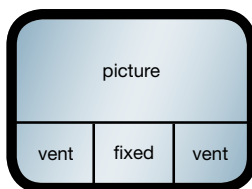
8800BT

Full exit minimum window size
27" x 20"
Red latch exit minimum size
56" x 30" with 20" bar height



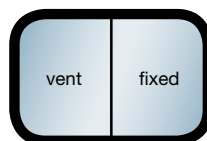
8800DW

Reversible SP/PS
Red latch exit minimum size
56" x 20"



8800BT

Full exit minimum exit size
29" x 20"



8800HSX

Minimum size 27" x 20"

Features:

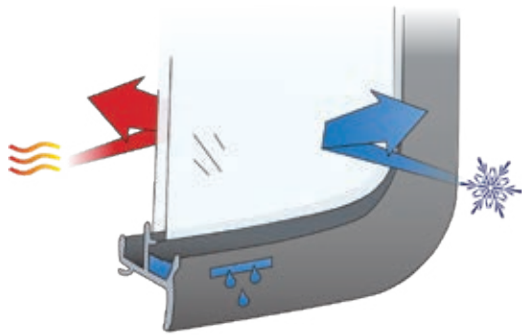
- Improved exterior styling: no exposed exterior fasteners for smoother exterior lines
- New and improved covered weep chambers eliminate exposed weep holes and water track
- Flush, low-profile screen design improves clearance and retention
- Increased sill slope to 30 degrees for improved water management
- Standard clamp ring installation available for various wall thicknesses
- Removable screens on all vents

TEMPERATURE CONTROL TECHNOLOGY

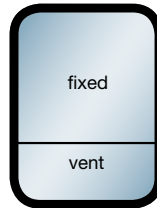
Our 8600 Series Dual Pane Sliding Window is designed to provide our customers with the very best in temperature control window technology. Its dual pane design keeps the heat out while maintaining cool temperatures inside. We offer various picture, vent and fixed pane options.

Features:

- Dual pane sliding window
- Available in 3-inch and 4-inch radii
- Removable sliding screens on all vents
- Standard clamp ring installation available for various wall thicknesses
- All glass is 7/16-inch insulated units

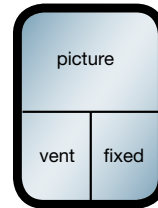


Keeps the heat out while maintaining cool temperatures inside the coach



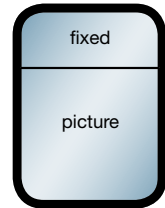
860VS

Full exit minimum exit size 27" x 20"



8600 T Bar

Full exit min window size 27" x 20"
Top T available also in TT/SP & TT/PS

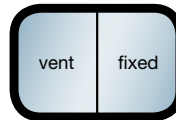


8600 T Picture



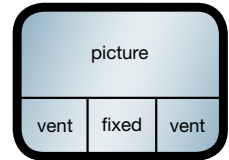
860PW

Full exit minimum exit size 27" x 20"



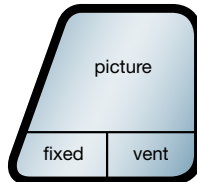
860SP

Full exit minimum exit size 27" x 20"
Red latch minimum size 56" x 20"



8600 DBL T Bar

Full exit minimum exit size 27" x 20"
Top T also available



860BT Angled

PS Shown/SP Opposite

DURABLE. VERSATILE. SECURE.



Clamp ring with bars



Horizontal slider



Horizontal slider

300 Series HT Window

- Sliding screens add versatility
- Sliders available in right-hand or left-hand configurations

393 Utility Window

- Fixed, non-sliding screens promote ideal airflow
- Available with top and bottom weep holes
- Available in black and silver
- Exterior pull knob on sliding glass securely fastened mechanically

Features:

- Heavy-duty radius corner window available in various sliding and stationary models
- Standard safety glass available in many different tints
- Window installed using interior clamp ring
- Egress versions available
- Optional clamp ring

SAFE & STURDY



Drop Down Feed Window



Feed Door Window Insert

*Window location adjustable:
handle moves center mullion
up and down through frame*

Features:

- Horizontal slider promotes maximum airflow
- Slide handle can be placed in several positions to achieve desired handle height; handle is connected to plunger using an aluminum bar, not a crimped cable
- Features Bauer Key System
- Optional feed handle; low profile allows the door to open 180 degrees; lock compatible with Fastec or Trimark
- Window extrusions available in black or silver
- Standard safety glass available in many different tints; also available in gray and bronze reflective
- Exterior pull knob on sliding glass securely fastened mechanically
- Window installed using an interior clamp ring
- Extruded aluminum hinge with stainless steel pin improves strength and durability
- Cage bars are welded firmly in place



TRAIL-CAT-2/18-REV3



LIPPERT
COMPONENTS