

2020 CATALOG



What's in a name? If that name happens to be INNO, it stands for nearly 40 years of designing and manufacturing the most INNOvative and technologically advanced car racks for active sports enthusiasts.

Founded in 1966 by Takaaki Murata, the inventor of the car seat headrest, Car Mate is today the largest manufacturer of automotive accessories in Japan. The company's car rack division was launched in 1976. Today INNO has almost a 60% share of the Japanese car rack market, with our own manufacturing facilities in Japan, China and the USA to keep up with the growing demand.

The breadth of our premium quality car racks and cargo systems are the result of decades of industry experience within the automotive accessory and rack business. Car Mate USA, Inc., is a wholly owned subsidiary of Car Mate Mfg. Co., Ltd. of Tokyo, Japan, doing business as INNO Advanced Car Racks. Car Mate is a publicly traded company on the JASDAQ in Japanese stock market.



INNO first appeared in the U.S. market in 2003. Not surprisingly, our racks have caught on quickly in the States and are considered an ideal match for the nation's growing legions of active "weekend warriors" and professional athletes who demand technological superiority. No other company tests its racks as thoroughly or as vigorously to make sure that they protect the cargo and the vehicle in what can often be harsh conditions. From our testing labs with UV-ray and salt spray testing booths to the race track designed for automotive manufacturers that we have used for real-world high speed testing, we take your safety and your investment in your gear seriously. Our attention to detail is what has made us different from other competitors. All of our products are backed by an industry leading warranty.

INNO's greatest INNOvation is quality and reliability that you can trust to protect you, your car, and your cargo.



Introduction To Your System Carrier

Contents

AeroBase Rack Systems

1 ~ 2

Through Bar Type

3

Flush Bar Type

4

T-Slot Attachments

5 ~ 6

Square Bar Systems

7 ~ 8

Bike-Hitch Mount & Rooftop

9 ~ 13

Truck Bed Mounts

14

Cargo Boxes

15 ~ 22

Snow Racks

23 ~ 24

Water Sports

25 ~ 26

Camping

27 ~ 28

Fishing

29 ~ 32

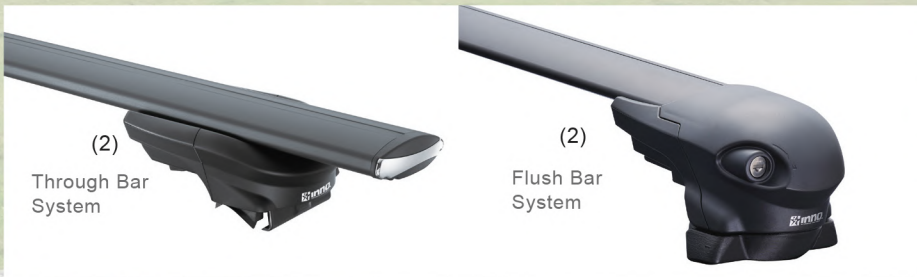
Attachments (1)

Whether you are a sports enthusiast or a traveler of the open road, one must think how to carry their gear. INNO ATTACHMENTS do just that, allowing you to carry your bikes, water sports or winter sports equipment and more- or just stow extra baggage and equipment in a cargo box. All INNO ATTACHMENTS include universal mounts, fitting most factory and aftermarket cross bars.



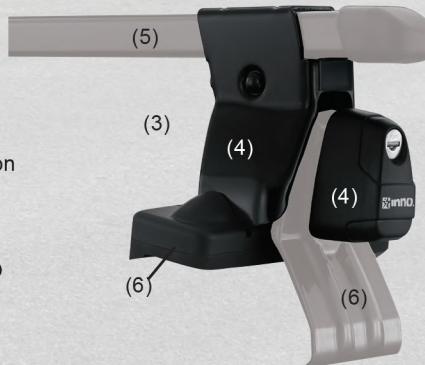
Aero Base Rack Systems (2)

INNO's aerodynamic AERO BASE RACK SYSTEMS feature a solid black scratch resistant coated low profile design. Systems available for Flush Bars and Through Bars.



Base Rack Systems (3)

BASE RACK SYSTEMS are a combination of several items including; STAYS, CROSS BARS, and FIT KITS (vehicle dependent) creating a BASE RACK SYSTEM for your vehicle. Installation of a BASE RACK SYSTEM allows the use of ATTACHMENTS to be mounted to your vehicle. To select the correct BASE RACK SYSTEM for your vehicle please visit our fit guide on the INNO website:



Stays (4)

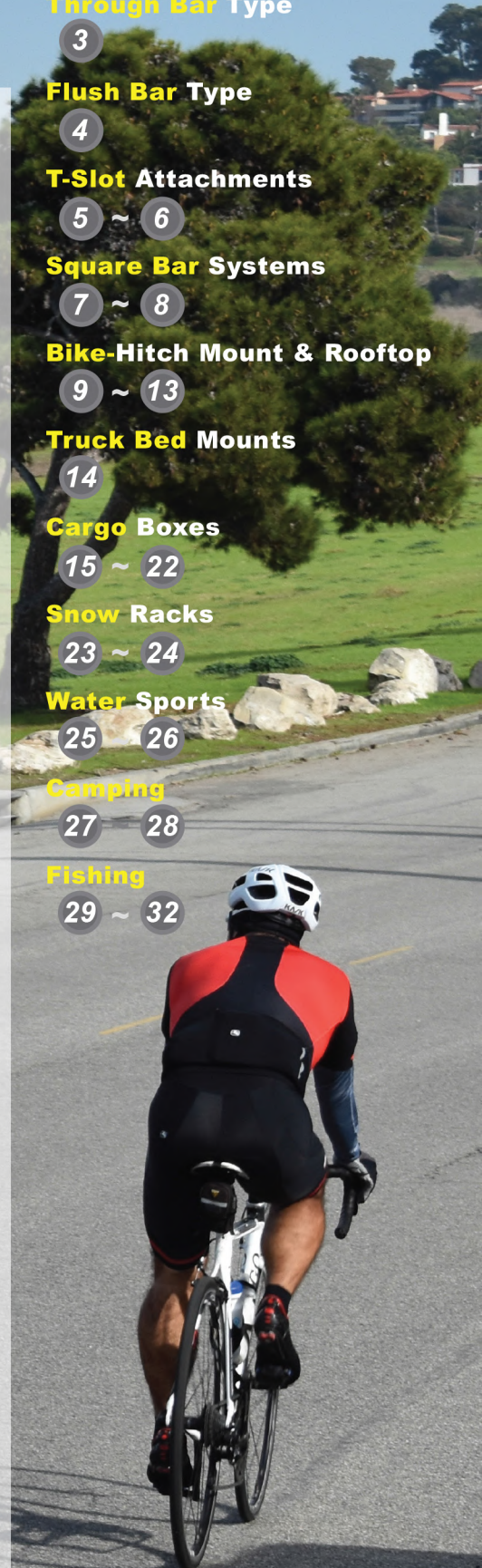
STAYS support different vehicle roof styles; smooth, raised side rails, track, and fixed point, allowing cross bars to be mounted securely. STAYS come as a set of four with locks and keys included.

Cross Bars (5)

Cross Bars are made of square hardened steel and elastomeric coating to resist corrosion, offering superior strength. CROSS BARS are available in eight different lengths offering the best look and fit for your vehicle.

Fit Kits (6)

Newly redesigned fit kits fit even better to each vehicle. FIT KITS may include any of the following to support your vehicle configuration: hooks, pads, brackets, covers, and assembly parts. FIT KITS work in conjunction with the STAYS supporting smooth roof, track, and fixed point BASE RACK SYSTEMS.



Aero Base Rack Systems ○ ○ ○ ○

New aerodynamic AERO BASE RACK SYSTEMS feature a solid black scratch resistant coated low profile design for a quiet ride and improved fuel economy Systems available for Flush Bars and Through Bars

Raised Rail
XS100/XS150



Smooth Roof
XS201/XS250



➤ Through Bar Type ○ ○ ○ ○

EZ-Mount

Secure And Easy Installation

Fine Finish Bar

Scratch Resistant Blasted Black Finish

Non-Cut Rubber

EZ-Slide Coated Non-Cut Trim

Quiet Ride

*20% Less Wind Noise

Aerodynamic, Reduced Height Design*

Aerodynamic, Reduced Height Design Low Profile Stay (*Excluding XS250). Aerodynamically Shaped Bar



*According To Internal Test Data Compared To INNO Square Bars



XS150
For Raised Rail



XS250
For Smooth Roof



XS350
For Fixed Points



XS450
For Flush Rail

➤ Aero Base Rack Systems ○ ○ ○ ○

For raised rail, smooth roof, fixed point, and low rail style vehicles

- Glass Blasted Black Finish
- Low profile design for quiet ride and improved fuel economy
- Scratch resistant coating
- Locks and keys Included



Available Lengths:

XB85: 33in. GB Black	XB108: 42in. GB Black	XB130: 51in. GB Black	XB153: 60in. GB Black
XB93: 36in. GB Black	XB115: 45in. GB Black	XB138: 54in. GB Black	XB160: 63in. GB Black
XB100: 39in. GB Black	XB123: 45in. GB Black	XB145: 57in. GB Black	

• (Fig.1) The mold for filling the T-SLOT has double structures, the elastic base section and the smooth surface, which simplifies the positioning of the mounting bolts.

• (Fig.2) To fix the mounting bolts, just remove the stay cover / end cap, insert them into the T-SLOT, and slide.

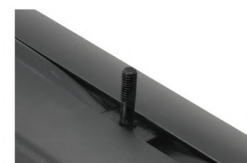


Fig.1



Fig.2

Fixed Points
XS300/XS350



Flush Rail
XS400/XS450



➤ Flush Bar Type ○ ○ ○ ○

EZ-Mount

Secure And Easy Installation

Fine Finish Bar

Scratch Resistant
Blasted Black Finish

Non-Cut Rubber

EZ-Slide Coated Non-Cut Trim

Quiet Ride

*20% Less Wind Noise
Compared to INNO
Square Bars

**Aerodynamic,
Low Down Design**

Aerodynamic, Reduced Height
Design. Aerodynamically Shaped
Bar and Low Profile Stay



*According To Internal Test Data



XS100
For Raised Rail



XS201
For Smooth Roof



XS300
For Fixed Points



XS400
For Flush Rail

Low Profile

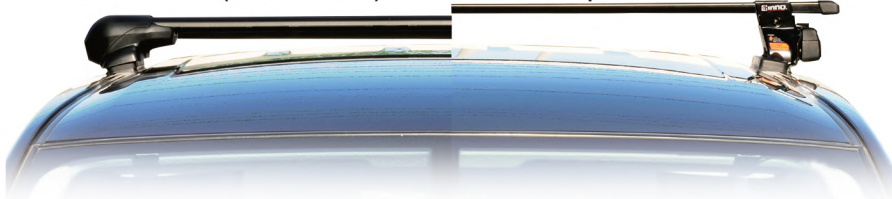
A stylish look made possible by lowering the bar height to the limit

Bar End

Bar extension is eliminated to create a sense of integration

Aero Base (Flush Bar)

Square Base



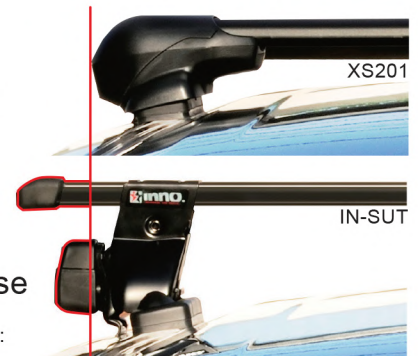
Height of XS201 is lower than IN-SUT

Installed example: Toyota Minivan

Aero Base

Square Base

Installed example: Toyota Minivan



Through Bar Type ○ ○ ○ ○

> XS150 ○ ○ ○ ○

For Vehicles with raised side rails

- XS150 (Black)
- Rubber coated stainless steel straps
- Locks and keys included
- Set of 4



> XS250 ○ ○ ○ ○

For Smooth Roof Vehicles Without Rain Gutters

- XS250 (Black)
- Locks and Keys included
- Requires the appropriate Fit Kit
- Set of 4



> XS350 ○ ○ ○ ○

For vehicles with factory track systems and fixed points

- XS350 (Black)
- Locks and keys included
- Requires the appropriate Fit Kit
- Set of 4



> XS450 ○ ○ ○ ○

For vehicles with flush mount rails

- XS450 (Black)
- Locks and keys included
- Requires the appropriate Fit Kit
- Set of 4



XS250 System Shown

3 Through Bar Type

Flush Bar Type

> XS100

- For Vehicles with raised side rails
- XS100 (Black)
- Rubber coated stainless steel straps
- Locks and keys included
- Set of 4



> XS201

- For Smooth Roof Vehicles Without Rain Gutters
- XS201 (Black)
- Locks and Keys included
- Requires the appropriate Fit Kit
- Set of 4



> XS300

- For vehicles with factory track systems and fixed points
- XS300 (Black)
- Locks and keys included
- Requires the appropriate Fit Kit
- Set of 4



> XS400

- For vehicles with flush mount rails
- XS400 (Black)
- Locks and keys included
- Requires the appropriate Fit Kit
- Set of 4



- EZ-slide Plastic Coated & Non-cut Trim



- Scratch Resistant Bar
- Glass Blasted Black Finish



- Wing Shaped Aero Bar
- Reduced Wind Noise Over Other Systems
- Better Fuel Economy



- No Tools Required for XS100/150 Only
- Double Threaded Screw for Easier and Faster Installation for XS100 /150 Only



- Locks and Keys Included



- Greater Fitting Range: Fits Side Rail Circumference 2 1/2" to 8" XS100/150 Only



- Torque Indicator for XS201/250/400/450 to Prevent Over Tightening



- Bar-End Stop for Added Safety



T-SLOT ONLY ATTACHMENTS



XA391



Fork Lock for Aero Base

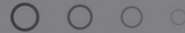
- XA391 (Black)
- 1 bike capacity
- This attachment can be mounted only to the T-SLOT equipped Aero Base Bar
- A stylish installation is assured with the unexposed mounting bracket located under the bar



- New front fork holder with clutch tightening adjuster
- Oversize quick release handle allowing more leverage for small hands
- Lock and keys included
- Able to be mounted with the general quick release bikes with a fork width of 100mm and an axle shaft of 9mm
- Compatible with standard forks with 100mm spacing and 9mm quick release



XA445



Surf / SUP / Kayak / Canoe Locker for AeroBase

- XA445 (Black)
- 1 Kayak or 1 Canoe or 2 Wind Surfboards or 3 Shortboards or 2 Longboards or 2 SUP
- This attachment can be mounted only to the T-SLOT equipped Aero Base Bar.
- A stylish installation is assured with the unexposed mounting bracket located under the bars



- Floating strap system for easy loading
- Ratcheting mechanism for secure tightening
- Rubber coated stainless steel cable strap
- Board pads sold separately
- Locks and keys included



5

T-Slot Attachments

INSUT ○ ○ ○ ○

For smooth roof vehicles
Without Rain Gutters

- IN-SUT (Black)
- Torque control knob for preventing overtightening
- Locks and Keys included
- Requires the appropriate IN-SUT Fit Kit
- Set of 4



IN-FR ○ ○ ○ ○

For vehicles with raised side rails

- IN-FR (Black or Silver)
- Rubber coated stainless steel straps
- Locks and keys included
- Set of 4

IN-XP ○ ○ ○ ○

For vehicles with factory track systems and fixed points

- IN-XP (Black)
- Newly redesigned larger lever for easier installation
- Locks and keys included
- Requires the appropriate TR Fit Kit
- Set of 4



IN-TR ○ ○ ○ ○

For vehicles with unique track systems and mounting points

- IN-TR (Black)
- Locks and keys included
- Requires the appropriate TR Fit Kit
- Set of 4



IN-XR ○ ○ ○ ○

For vehicles with factory track systems and fixed points

- IN-XR (Silver)
- Locks and keys included
- Requires the appropriate TR Fit Kit
- Set of 4



7 Square Bar Systems

INSUT ○ ○ ○ ○

For smooth roof vehicles
Without Rain Gutters

- IN-SUT (Black)
- Torque control knob for preventing overtightening
- Locks and Keys included
- Requires the appropriate IN-SUT Fit Kit
- Set of 4



IN-FR ○ ○ ○ ○

For vehicles with raised side rails

- IN-FR (Black or Silver)
- Rubber coated stainless steel straps
- Locks and keys included
- Set of 4

IN-XP ○ ○ ○ ○

For vehicles with factory track systems and fixed points

- IN-XP (Black)
- Newly redesigned larger lever for easier installation
- Locks and keys included
- Requires the appropriate TR Fit Kit
- Set of 4



IN-TR ○ ○ ○ ○

For vehicles with unique track systems and mounting points

- IN-TR (Black)
- Locks and keys included
- Requires the appropriate TR Fit Kit
- Set of 4



IN-XR ○ ○ ○ ○

For vehicles with factory track systems and fixed points

- IN-XR (Silver)
- Locks and keys included
- Requires the appropriate TR Fit Kit
- Set of 4



7 Square Bar Systems

With RainGutters

For vehicles with rain gutters

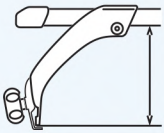
- Black
- Locks and keys included
- Set of 4

Available Heights:

IN-LD: 5.5 in.

IN-SDK: 7.5 in.

IN-MDK: 11 in.



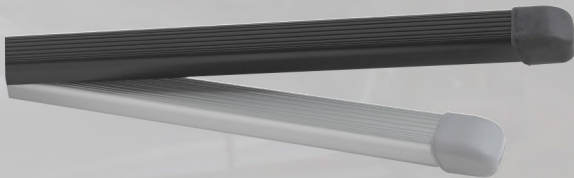
Square Bars

- Black or Silver
- Made of hardened steel with elastomeric coating
- Square profile
- Dimensions: width 0.9in (23mm) x height 1.3in (32mm)

Available Lengths:

IN-B107: 42in. Silver or Black; IN-B117: 46in. Silver or Black
IN-B127: 50in. Silver or Black

IN-B137: 54in. Black; IN-B147: 58in. Black; IN-B165: 65in. Black;
IN-434A: 71in. Black; IN-436L: 79in. Black



IN-JK

Joint Bar for IN-SUT Stay
For vehicles with short roof lines

- IN-JK (Black)
- Requires IN-SU / SUT rack system
- Creates a stronger and more stable platform
- Set of 2



Fairing (Universal Mount)

- Black or Carbon Fiber
- Universal mounting system, fits aero, square, round and most factory cross bars
- Made of strong durable 3 layer ABS plastic
- Reduces wind noise at high speeds
- Aerodynamic design for better fuel economy

Available Widths:

Carbon Fiber-

INA270: Small : 31" W x 4.5" H

INA271: Med : 40" W x 4.5" H

INA272: Large : 48" W x 4.5" H

Black-

INA260: Small : 31" W x 4.5" H

INA261: Med : 40" W x 4.5" H

INA262: Large : 48" W x 4.5" H



Carbon Fiber



Carbon Fiber Detail



Black





Bike



INH110

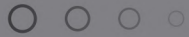
- 1 Bike
- Fits 1 1/4" and 2" receivers
- Max 60 lbs.

INH120

- 2 Bike
- Fits 1 1/4" and 2" receivers
- Max 120 lbs.

INH142

- 4 Bike
- Fits only 2" receiver
- Max 160 lbs.



TIRE HOLD BIKE HITCH

- INH110 (1 Bike), INH120 (2 Bike), INH142 (4 Bike)
- E-bike capability (Each tray can carry up to 60 lbs.
Max total of INH142 is 160 lbs.)
- Carrier secures bike without touching bike frame or forks
- Good for carbon frames, large size fork and 27.5" semi fat bikes

- Foldable trays when not in use
- Trays tilt down to allow access to trunk with a lever
- Fits 1 1/4" and 2" receivers with an adapter (included)
for INH110 and INH120
- Fits 2" receiver only for INH142

- Capacity
- Tire size: 20" - 29"
- Tire width: 18c - 3"
- Wheel base: 34" - 48"



> INH540 ○ ○ ○ ○

Vertical Hang (Folding Type)

- INH540 (4 bike capacity)
- New hanging design makes it possible to carry up to four dual suspension bikes
- Only one arm goes into frame, instead of two, making it easier to fit complicated suspension designs
- Tilts down arms when not in use and folds down post to allow access to trunk
- Includes lock, keys, and security cable
- Fits 1 1/4" and 2" receivers with included adapter



> INH620 / INH640 ○ ○ ○ ○

Aero Light 2 (Folding Type)

- INH620 (2 bike capacity, fits E-bike)
- INH640 (4 bike capacity)
- Affordable yet packed with features
- Tilts down arms when not in use and folds down post to allow access to trunk
- Includes lock, keys, and security cable
- Fits 1 1/4" and 2" receivers with included adapter



• INH640
(4 bike capacity)

INH330

Aero Light QM (Folding Type)

- INH330 (2 bike capacity)
- Light weight aluminum construction
- 30lbs empty weight
- Good for bike with fenders
- Accommodates wheel sizes ranging from 20" to 29", and tire widths from road to 5" wide fat tire bike sizes
- Tilts down to allow access to trunk or rear car storage
- Easily foldable, independently adjustable wheel trays



- Built in handle for easy lifting and carrying, during installation or storage
- Adjustable height upright supports
- Ratcheting wheel holders
- Includes lock, keys, and security cable
- Fits 1 1/4" and 2" receivers wth included adapter
- Folded dimensions - 29 1/2" H x 21 5/8" W x 12 1/4" D

INH310

Aero Light One

- INH310 Black (1 bike capacity)
- Super light weight 22lbs, easy to install and remove
- Good for bike with fenders
- Accommodates wheel sizes ranging from 20" to 29", and tire widths from road to 5" wide fat tire bike sizes
- Supports most bike frame styles
- Built in handle for easy lifting and carrying, during installation or storage
- Adjustable height upright supports
- Ratcheting wheel holders
- Includes lock, keys, and security cable
- Fits 1 1/4" and 2" receivers wth included adapter
- Folded dimensions - 29 1/2" H x 14" W x 12 1/4" D



INA389

Tire Hold 2

- INA389 Black (1 bike capacity)
- Newly Improved Tire Size adjuster for faster and easier Tire Size Adjustment
- Carrier secures bike without touching bike frame or cable brake systems
- No tools required
- Universal Mounting System, fitting to aero, square, round, and most factory cross bars
- Supports most bike frame styles



- Supported tire sizes: 20", 22"-24", 26"- 27.5", 700c, 29" max. tire width 2.7"
- Locking rear ratchet tire holder
- A lock, keys and locking bike cable included

Only 3 Steps To Secure Your Bike

- Step 1 Open the arms
- Step 2 The bike drops into the front arm using "Self-Standing Auto System"
- Step 3 Rear ratcheting arm secures and locks bike into position

INA391

Fork Lock III

- INA391 Silver (1 bike capacity)
- New front fork holder with clutch tightening adjuster
- Universal Mounting System, fitting to aero, square, round, and most factory cross bars
- Compatible with disc brakes
- Front fork holder with clutch tightening adjuster
- Oversize quick release handle allowing more leverage for small hands
- No tools required
- A lock and keys included



INA392

Multi Fork Lock

- INA392 Silver (1 bike capacity)
- All-in-one compatibility fitting 9mm, 15mm, and 20mm thru axle bikes.

- All new thru-axle compatible for three size axles

- Universal Mounting System, fitting to aero, square, round, and most factory cross bars
- The multi cradle is compatible with MTB and road bike tires
- Frame made of light weight Aluminum
- The carrier comes with anti-theft QR guard (Fig.1)

- A new model of asymmetry design
- Compatible with disc brakes
- Adaptors for 9mm, 15mm, and 20mm thru axle
- No tools required
- A lock and keys included



INA387

Slim Fork

- INA387 Black (1 bike capacity)
- Light weight slim design
- Universal Mounting System, fitting to aero, square, round, and most factory cross bars
- Compatible with disc brakes
- All rim heights, no straps required
- Supports rear tires widths: 18c to 35c
- Front fork holder with clutch tightening adjuster.
- Oversize quick release handle
- Quick release for crossbar mounting
- Advanced rear wheel holder using proven bicycle brake technology
- Ratcheting tension system grips the wheel and rim like a brake pad
- Built in torque adjust allows perfect tension without over tightening
- No tools required
- A lock and keys included





RT201 / RT202



Velo Gripper

Put your bike in the bed of your truck without sacrificing precious cargo space with our new Velo Gripper bike mount.

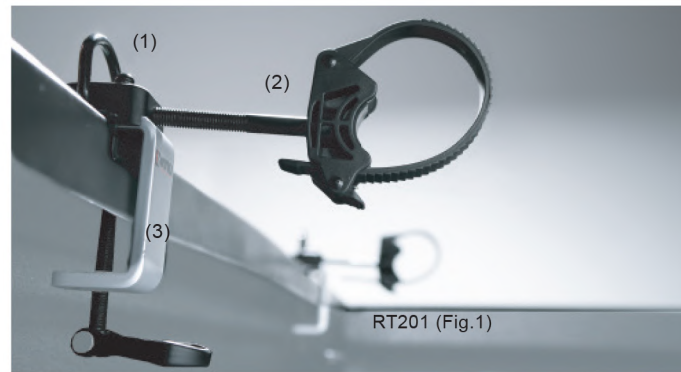
- RT201 (1 bike capacity. Standard truck beds)
- RT202 (1 bike capacity. C-channel track systems)
- Does not require front tire removal

- Works with all types of bikes
- These items work with standard bike cable locks (not included)

1. Comes with D-ring for tie down straps (Fig.1)
2. Ratcheting fork holder
3. No tools required and no holes to drill



RT202



RT201 (Fig.1)



RT101 / RT102



Truck Stay

- RT101 Standard Truck
- RT102 C-Channel Truck
- Designed for trucks with standard truck beds (RT101) or C-channel track systems (RT102)
- Allows mounting of attachments above the truck bed
- Compatible with square or round bars

- Silver
- Easy mount
- No holes to drill
- Set of 4



RT101



RT101



RT102



RT102



Cargo Boxes



Phantom, Wedge and Shadow Series

INNOvative technology and advanced materials that reduce weight and maximize strength. Aerodynamic design for superior noise reduction. Stiffer base for stability.

- Dual side opening for easy loading (Fig.1)
- Ample storage capacity (Fig.2)
- User friendly locking mechanism for single handed opening (Fig.3)
- Universal Mounting System, fitting mounts to square, round, and most factory cross bars



Fig.1



Fig.2

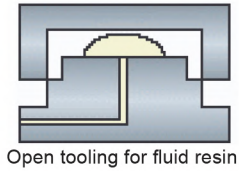


Fig.3

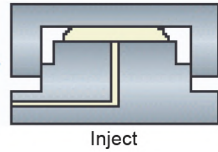
Technology

Utilizing technology that has been proven in Automotive Manufacturing, the SPM process of injection molding produces the most innovative cargo box.

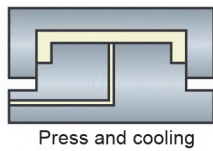
- Injection mold SPM process creates strong, durable, lightweight forming structures.
- An ideal combination of Press-forming and Injection-molding creating uniform thickness throughout.
- SPM integrated Servo-direct controls produce extraordinary product stability.
- Extra-low injection speed allows for increased forming structure, improving body stiffness and reducing torque.
- Up to 50% stronger than conventional Vacuum-forming



Open tooling for fluid resin



Inject



Press and cooling

M Memory Mount

Memory Mount allows you to install or remove a cargo box in seconds making the use of the cargo box hassle free.

- Universal Mounting System, fitting to aero, square, round, and most factory cross bars (Fig.1)
- Low profile maximizing the interior storage capacity of your cargo box
- No tools required
- Removable mounts reducing the chance of damage when storing the cargo box. (Fig.2)
- Built-in quick wheel adjustment for a secure fit to the cross bar (Fig.3)



Fig.1



Fig.2



Fig.3

Q Quick Mount

- Universal Mounting System, fitting to aero, square, round, and most factory cross bars (Fig.1)
- No tools required (Fig.2)
- Cross Bar height adjustment (Fig.3)



Fig.1



Fig.2



Fig.3



Models Shown: Wedge BRM660BK and BRM624WH Photo by: Yujiro Otsuki



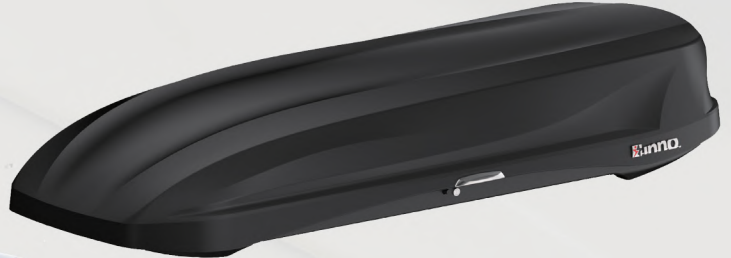
BRM864



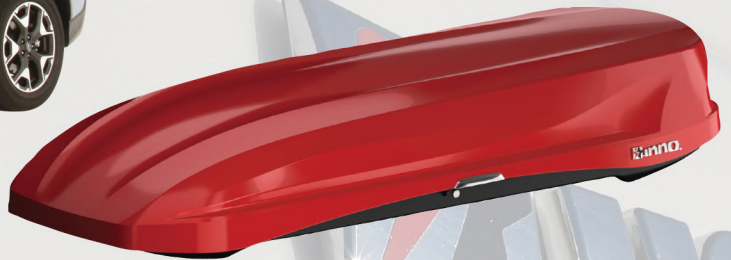
INNO WEDGE Plus

- BRM864BK (Matte Black)
- 4-6 Snowboards or 6-8 Skis
- 13 cubic feet capacity
- Dual-side opening for easy loading
- Comes with inner mat for reduced noise, gear protection and easy care

- Memory Mount System **M**
- Safety lock system – key can only be removed once box is locked
- Universal Mounting System, fitting to aero, square, round, and most factory cross bars
- Locks and keys included



M Matte Black (BRM864MBK)



M Red (BRM864RE)



Comes with inner mat for reduced noise, gear protection and easy care

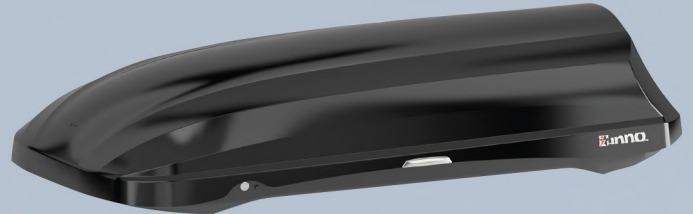


BRM466 ○ ○ ○ ○

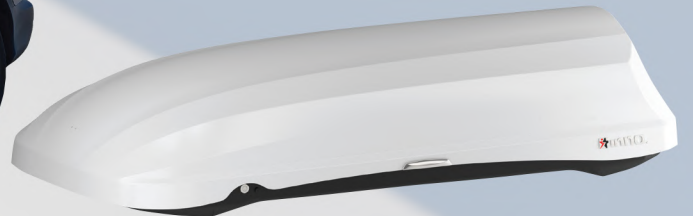
INNO PHANTOM 466

- BRM466BK (Gloss Black)
- BRM466WH (Gloss White)
- 4-8 Snowboards or 8-10 Skis
- 18 cubic feet capacity
- Dual-side opening for easy loading

- Memory Mount System **M**
- Safety lock system – key can only be removed once box is locked
- Universal Mounting System, fitting to aero, square, round, and most factory cross bars
- Locks and keys included



M Gloss Black (BRM466BK)



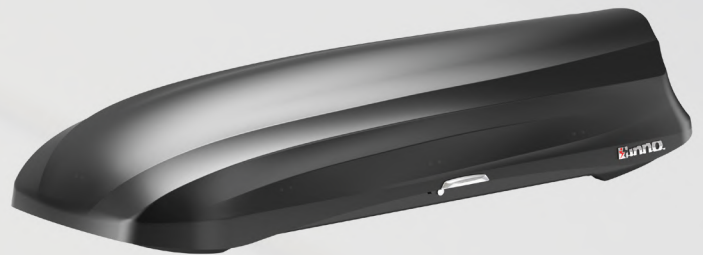
M Gloss White (BRM466WH)

BRM665 ○ ○ ○ ○

INNO WEDGE 665

- BRM665BK (Gloss Black)
- BRM665WH (Gloss White)
- 4-6 Snowboards, or 6-8 Skis
- 14 cubic feet capacity

- Memory Mount System **M**
- Safety lock system – key can only be removed once box is locked
- Universal Mounting System, fitting to aero, square, round, and most factory cross bars
- Locks and keys included

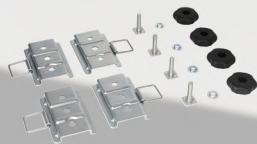


M Gloss Black (BRM665BK)



M Gloss White (BRM665WH)

T-Slot Adaptor (BRP12)
Sold Separately
(Refer to Page 6)





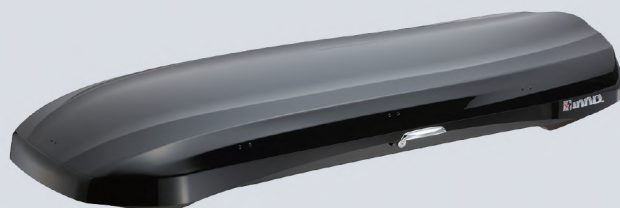
BRM660



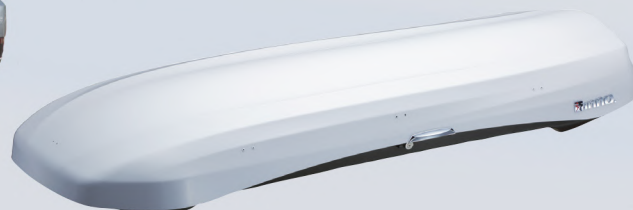
INNO WEGDE 660

- BRM660BK (Gloss Black)
- BRM660WH (Gloss White)
- 4 Snowboards, or 6-8 Skis, or 2 Surfboards
- 11 cubic feet capacity
- Dual-side opening for easy loading

- Memory Mount System **M**
- Safety lock system – key can only be removed once box is locked
- Universal Mounting System, fitting to aero, square, round, and most factory cross bars
- Locks and keys included



M Gloss Black (BRM660BK)



M Gloss White (BRM660WH)



T-SlotAdaptor (BRP12)
Sold Separately
(Refer to Page 6)



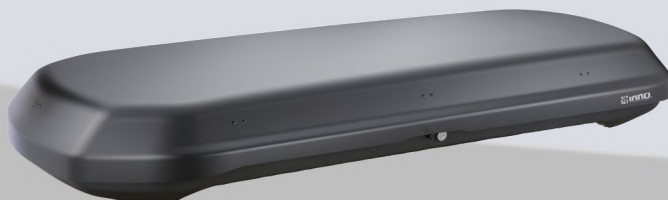
BRM320



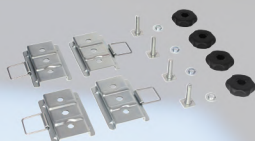
INNO ROOF BOX 320

- BRM320MBK (Matte Black)
- 4 Snowboards, or 6-8 Skis, or 1 Surfboard
- 9 cubic feet capacity
- Dual-side opening for easy loading

- Memory Mount System **M**
- Safety lock system – key can only be removed once box is locked
- Universal Mounting System, fitting to aero, square, round, and most factory cross bars
- Locks and keys included



M Matte Black (BRM320BK)



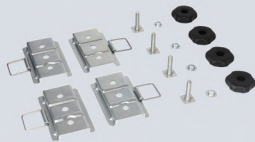
T-SlotAdaptor (BRP12)
Sold Separately
(Refer to Page 6)

BRA1210BK

INNO SHADOW16

- BRA1210BK (Matte Black)
- 4-6 Snowboards, or 6-8 Skis, or 2 Surfboards
- 13 cubic feet capacity
- Dual-side opening for easy loading

- Quick Mount System **Q**
- Safety lock system – key can only be removed once box is locked
- Universal Mounting System, fitting to aero, square, round, and most factory cross bars
- Locks and keys included



T-Slot Adaptor (BRP12)
Sold Separately
(Refer to Page 6)



Q Matte Black (BRA1210BK)



BRA1150

INNO SHADOW 15

- BRA1150BK (Gloss Black)
- 4-6 Snowboards, or 6-8 Skis, or 2 Surfboards
- 11 cubic feet capacity
- Dual-side opening for easy loading

- Memory Mount System for BRA1150 **M**
- Safety lock system – key can only be removed once box is locked
- Universal Mounting System, fitting to aero, square, round, and most factory cross bars
- Locks and keys included



M Gloss Black (BRA1150BK)



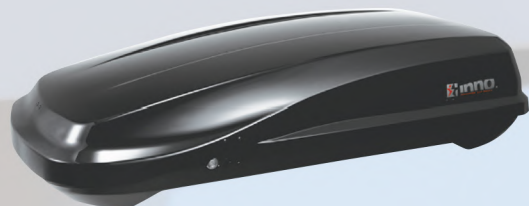
T-Slot Adaptor (BRP12)
Sold Separately
(Refer to Page 6)

BRA240

INNO RIDGEBOX

- BRA240BK (Gloss Black)
- 8 cubic feet capacity
- Passenger-side opening for easy loading
- Compact size smaller vehicles with square style finish allows more cargo space.






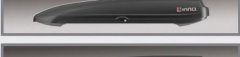


- U-bolt Mount System **U**
- 3 layer ABS construction and beautiful finish
- Safety lock system – key can only be removed once box is locked
- Universal Mounting System, fitting to aero, square, round, and most factory cross bars
- A lock and keys included



U Gloss Black (BRA240BK)

CARRIER ATTACHMENT CARGO BOX



		Exterior Dimensions	Interior Dimensions	Capacity	Weight	Box Opening
	BRM466	78.5"X37.5"X17.75" (16.5 inch) (200x95x45cm)	73.0"X31"X15" (186x78x38cm)	18 cu.ft.	49 lbs.	Right and Left
	BRM864	80"X33"X13.75" (12.4 inch) (205x84x35cm)	72.0"X25.6"X11" (183x65x28cm)	13 cu.ft.	44 lbs.	Right and Left
	BRM665	80"X33"X15.8" (14.2 inch) (203x84x40cm)	72.0"X25.6"X13.4" (183x65x34cm)	14 cu.ft.	52 lbs.	Right and Left
	BRM320	71.25"X32"X10.6" (12.2 inch) (180x81x26cm)	66.14"X25.6"X9" (168x65x22cm)	9 cu.ft.	37 lbs.	Right and Left
	BRM660	80"X33"X11" (9.6 inch) (203x84x28cm)	72.0"X25.6"X9.2" (183x65x23cm)	11 cu.ft.	42 lbs.	Right and Left
	BRA1210	78.7"X31.9"X13.4" (14.2 inch) (200x81x34cm)	72.0"X25.6"X11.0" (183x65x28cm)	13 cu.ft.	42 lbs.	Right and Left
	BRA1150	78.7"X31.9"X11.8" (10.4 inch) (200x81x30cm)	72.0"X25.6"X9.0" (183x65x23cm)	11 cu.ft.	42 lbs.	Right and Left
	BRA240	55.1"X17.6"X13.4" (12.2 inch) (140x70x34cm)	50.4"X23.6"X11.4" (128x60x29cm)	8 cu.ft.	20lbs.	Right

*Quantities may vary based on binding size. **Fits most aftermarket cross bars and factory-installed racks. Check Fit Guide for specific vehicles.
 *** The distance from the rear mounting place to the rear edge of the cargo box.



BRM466BK



BRM864MBK



BRM665BK



BRM320MBK



BRM660WH



BRA1210BK



BRA1150BK

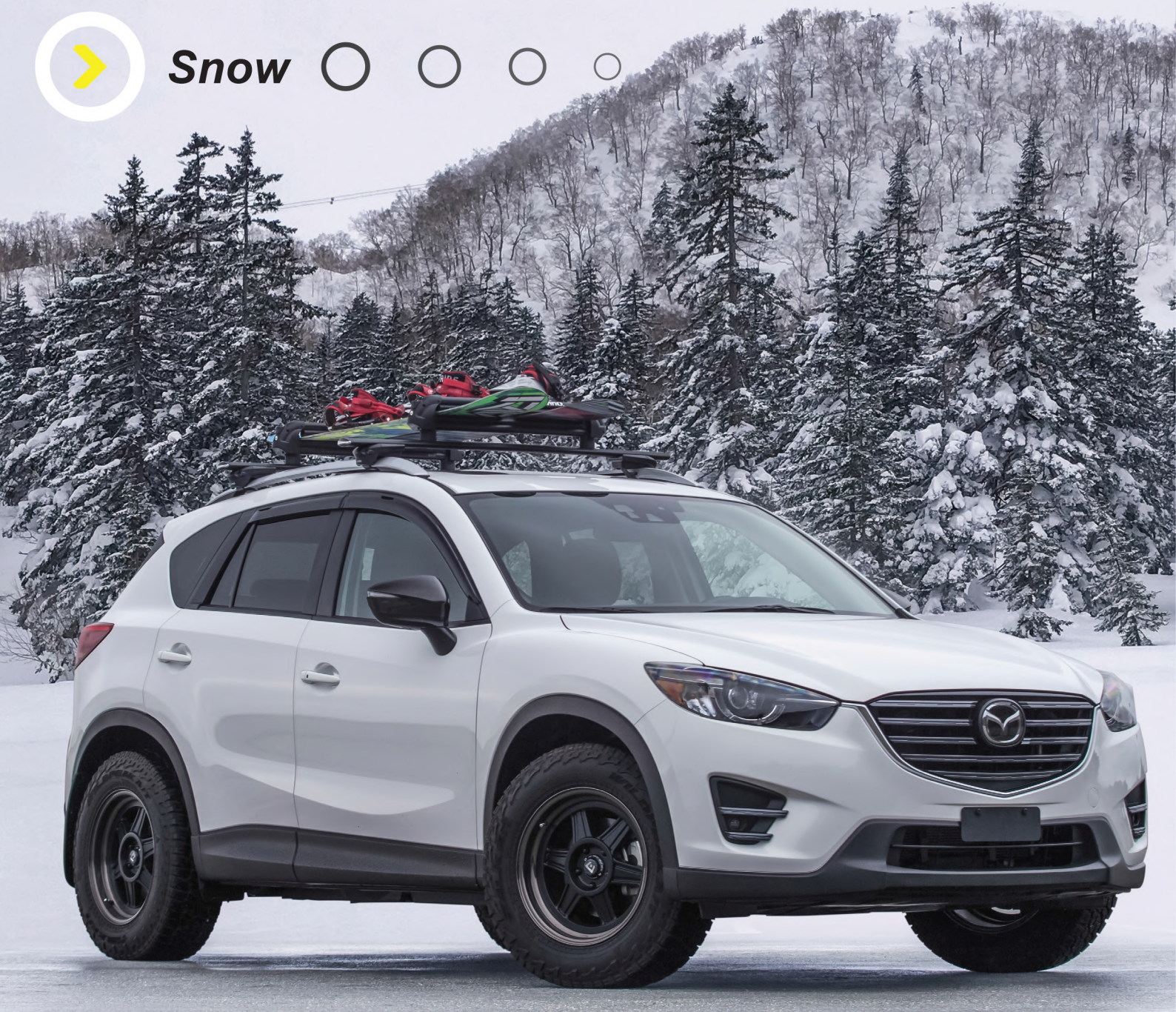


BRA240BK

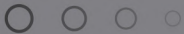
Crossbar Compatibility	Top Material	Base Construction	Hatch Clearance	Ski Capacity	Snowboard Capacity	Features
Universal **	3-Layer ABS	Vacuum-forming	12"	8 - 10	4 - 8 *	Largest Size
Universal **	3-Layer ABS	SPM Injection	12"	6 - 8	4 - 6 *	Useful Size
Universal **	3-Layer ABS	SPM Injection	12"	6 - 8	4 - 6 *	Ergonomic Design
Universal **	2-Layer ABS	SPM Injection	12"	6 - 8	4*	Square Design
Universal **	3-Layer ABS	SPM Injection	12"	6 - 8	4 *	Ergonomic Design
Universal **	2-Layer ABS	SPM Injection	12"	6 - 8	4 - 6 *	Ergonomic Design
Universal **	3-Layer ABS	SPM Injection	12"	6 - 8	4 *	Ergonomic Design
Universal **	3-Layer ABS	Vacuum-forming	11.4"	--	--	Perfect fit for sedans and small cars



Snow



XA927



Gravity for AeroBase

- XA927 (Black)
- 6 skis or 4 Snowboards
- This attachment can be mounted only to the T-SLOT equipped Aero Base Bar



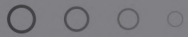
Black (XA927)
(Refer to page 6)

- A stylish installation is assured with the unexposed mounting bracket located under the bar
- Two-level height adjustment adaptors for compatibility with tall ski/snowboard bindings
- Locks and keys included



23

Snow Racks



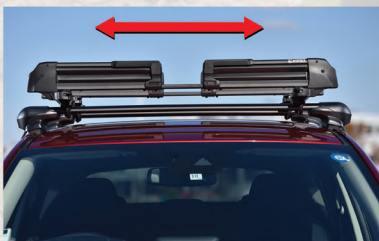
- INA951 (6 fat skis or 4 snowboards)
- INA952 (3 fat skis or 2 snowboards)
- Compatible with most cross bars and thick ski bindings
- Universal Mounting System, fitting to Aero, Square, and most Factory crossbars
- Tool-free installation with included hardware
- Constructed of durable plastic and rustproof aluminum



INA 951



INA 952



- Easy access from both car sides as the clamps adjust



- Wide cradle jaws hold fat skis & system bindings



- Easy on and off with Memory Universal Mount



- Fitting to Aero, Square and most factory cross bars



- Includes lock and keys

Surf / SUP / Kayak / Canoe Locker

- INA446, INA445, XA445 (Black)
- The ultimate Surf, SUP, Kayak and Canoe rack – and it locks too. Versatility is this racks middle name supporting Kayaks, Canoes, Wind/Paddle/Sail/SUP/Long and Short surfboards.
- 1 Kayak or 1 Canoe or 2 Wind Surfboards or 3 Shortboards or 2 Longboards or 2 SUP
- Universal Mounting System, fitting to aero, square, round, and most factory cross bars (INA445/446 only)

- Floating strap system for easy loading
- Ratcheting mechanism for secure tightening (Fig.1, Fig.2)
- Rubber coated stainless steel cable strap
- (INA445/XA445) board pads sold separately
- (INA446) board pads included
- Locks and keys included (Fig.3)



INA446



INA445



XA445 (For T-Slot Bars Only
Refer to Page 5)



Fig.1



Fig.2



Fig.3

Two Kayak Carrier

- INA455 (Black)
- 2 Kayaks
- Easy mount dual kayak carrier
- Universal Mounting System, fitting to aero, square, round, and most factory cross bars

- Includes cradles for two kayaks
- Foldable when not in use (Fig.1)
- INA451: Optional cradle set for INA450 (Fig.2)
- Pads and straps included



INA455



Fig.1



Fig.2

INA451



INA452

Multi Cradle

- INA452 (Black)
- 1 Kayak
- Set of 4 cradles for one kayak



- Universal Mounting System, fitting to aero, square, round, and most factory cross bars
- Pads and straps included
- Fits most Sit-On-Top kayaks



INA453

Kayak Lifter

- INA453 (Silver)
- Ultimate assist for all kayakers.
- Easy loading assist will help you to load the kayak without leaving a scratch on your car.
- Universal Mounting System, fitting to aero, square, round, and most factory cross bars



Board pad (INA771) sold separately

- Release the buckle (Fig.1)
- Push the kayak up with assist of the arm. Turn the kayak around (Fig.2)
- Fold the assist arm (Fig.3)



Fig.1



Fig.2



Fig.3

INA744

Board Locker

The ultimate board carrier for locking boards to your car

- INA744 (Black)
- 3 Shortboards or 2 Longboards
- Universal Mounting System, fitting to aero, square, round, and most factory cross bars
- Floating strap system for easy loading



- Ratcheting mechanism for secure tightening (Fig.1)
- Crane keeps straps for easy loading (Fig.2)
- Rubber coated stainless steel cable straps
- Integrated 24 inch padded bar
- Locks and keys included



Fig.1



Fig.2

INA771

Multi Board Pads Carbon

- INA771 (Carbon Fiber)
- Set of 2
- Securely transports sailboard masts or kayak paddles
- Fits perfectly on thicker bars including Aero Bars
- 19 1/8" Width



IN551

Bar End Hook

- IN551 (Silver)
- Retractable accessory hook mounts to the end of the crossbar so you can hang your wetsuit, towels and more.





INA510 / INA520



Roof Deck 100

- Universal Mounting System, fitting to aero, square, round and most factory cross bars
- Easy on and off with Memory universal mount which memorize the first setting
- Product weight: 28.7 lbs. (13kg)
- Max Load: 165 lbs. (75kg)
- Exterior Dimensions - 39.5" x 43.25" x 2.5" (1,000 x 1,100 x 80mm)
- Interior Dimensions - 35" x 39" x 1" (890 x 990 x 25mm)

Roof Deck 140

- Universal Mounting System, fitting to aero, square, round and most factory cross bars
- Easy on and off with Memory universal mount which memorize the first setting
- Product weight: 39.7 lbs. (18kg)
- Max Load: 165 lbs. (75kg)
- Exterior Dimensions - 55" x 55" x 2.5" (1,400 x 1,460 x 80mm)
- Interior Dimensions - 50.75" x 50.75" x 1" (1,290 x 1,290 x 25mm)



IOP50 / IOP51



Rail Kit for INA510

- Light weight and aluminum construction
- Heavy duty 32mm diameter pipe
- Matte black with Powdercoating finish

Rail Kit for INA520

- Light weight and aluminum construction
- Heavy duty 32mm diameter pipe
- Matte black with Powdercoating finish



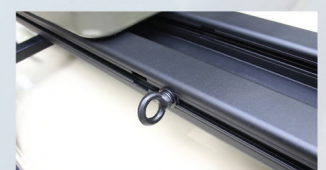
IOP52

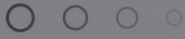


Eye Bolt

Option for both INA510 / 520

- Set of 2
- Instant tie down points to secure gear
- Rugged steel construction





Shaper 80 for Square Bar

- IN568 (Silver)
- This attachment can be mounted to square bars only
- Light weight Aluminum Material for greater loading capacity
- Vertical Panel Construction provides significant wind noise reduction
- Product Weight : 15 lbs (6.7kg)
- Max. Load : 110 lbs (50kg)
- Exterior Dimensions : 46 7/8" x 32 7/8" x 3" (1,185 x 830 x 75mm)
- Interior Dimensions : 41 7/8" x 30" x 2 7/8" (1,050 x 760 x 55mm)

Shaper 100 for Square Bar

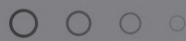
- IN569 (Silver)
- This attachment can be mounted to square bars only
- Light weight Aluminum Material for greater loading capacity
- Vertical Panel Construction provides significant wind noise reduction
- Product Weight : 17.4 lbs (7.9kg)
- Max. Load : 110 lbs (50kg)
- Exterior Dimensions : 46 7/8" x 41 7/8" x 3" (1,185 x 1,065 x 75mm)
- Interior Dimensions : 41 7/8" x 39 7/8" x 2 7/8" (1,050 x 1,000 x 55mm)



XA568 / XA569
(For T-Slot Bars Only Refer to Page 6)



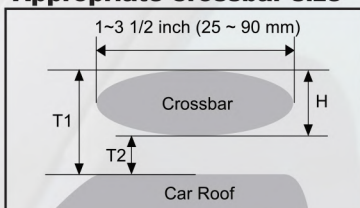
Accessory Adaptors*



*Not Required For All Installations

Loading Items	Item No.	H: Crossbar Height		Required Parts		T: Car roof - Crossbar (Minimum)
		Max with provided bolt (23mm - 35 mm)	In case to use parts	Long bolt kit	Round bar adaptor	
Ski / Snowboard	INA951 / INA952	7/8 - 1 3/8" (23mm - 35 mm)	—	—	—	T1: 2 1/8" (55 mm) T2: 1" (25 mm)
	INA940 / INA945 INA927	~ 1 3/8" (~ 35 mm)	~ 2" (~50 mm)	ISF711	ISF715	T1: 2 1/2" (65 mm) T2: 1 1/8" (30 mm)
Bike	INA387	~ 1 1/8" (~ 30 mm)	~ 2" (~50 mm)	ISF718	—	T2: 1 3/4" (45 mm)
	INA389			ISF727		T1: 2 3/8" (60 mm) T2: 1 1/8" (30 mm)
	INA391			ISF725		T1: 2 3/4" (70 mm) T2: 1 5/8" (40 mm)
	INA392	~ 1 3/4" (~ 45 mm)	—	—	—	T2: 3/4" (20 mm)
Surfboard	INA744	~ 1" (~ 25 mm)	~ 2" (~50 mm)	ISF711	ISF715	T1: 2 1/8" (55 mm) T2: 1 1/8" (30 mm)
Canoe / Kayak	INA445 / INA446	~ 1 1/8" (~ 30 mm)	~ 2" (~50 mm)	ISF722	—	T1: 2 1/2" (65 mm) T2: 1 3/8" (35 mm)
Kayak	INA451	~ 1 1/8" (~ 30 mm)	~ 2" (~50 mm)	ISF716	—	T1: 2 1/8" (55 mm) T2: 1 1/8" (30 mm)
	INA452			ISF716 x 2		
	INA455	~ 1 1/8" (~ 30 mm)	~ 2" (~50 mm)	ISF722 & ISF716 x 2	ISF729	T1: 2 1/2" (65 mm) T2: 1 3/8" (35 mm)
Kayak Lifter	INA453	~ 1 1/8" (~ 30 mm)	—	—	—	T1: 2 3/4" (70 mm) T2: 1 3/4" (45 mm)
Roof Deck	INA510 / INA520	3/4" - 1 3/8" (20mm - 35 mm)	—	—	—	T1: 2 1/8" (55 mm) T2: 1" (25 mm)
Fairing	INA260 / INA261 / INA262 INA270 / INA271 / INA272	~ 1" * (~ 25 mm)	~ 2" (~50 mm)	ISF717	—	T1: 2 3/8" - 5 1/8" (60 - 130 mm) T2: 1 1/8" (30 mm)

Appropriate crossbar size



Faring size for factory crossbars using interior measurements

- INA260 / 270 (Small size) = from 31" to 41" inches
- INA261 / 271 (Medium size) = from 41" to 49" inches
- INA262 / 272 (Large size) = from 49" inches or greater



Fishing



ROD BOX ON A VEHICLE

When you get to the fishing spot, you want to get ready and start fishing. The long rod will not fit in the car once assembled. If you do detailed setting work from the fishing spot, you will panic and fail. Make sure the setting is complete and put it on the rod box. Take it out and start fishing quickly! "Making the need from the field a product!" INNO knows the needs of anglers well.



Fishing Rod Box

IF44BK

- Three types of length adjustment are possible.
- Rod box that can store up to 9 ft. rod.
- Exterior Dimension:
- L92.9in ~ 116.9in x W13.4in x H6.7in



Slim is better because it carries a fishing rod. No extra length is required. "INNO Rod Box" with the product of Angler's desire



Can hold 4 to 8 fishing rods with reels. Since it is a symmetrical shape, you can mount forward or backward.

3-stage adjustment



Short position - 7' 4" inches



Medium position - 8' 3"



Long position - 9' 0"



The rod is held when the cover is closed
Cushion with a dimpled surface prevents shock and movement while driving



The spring damper makes opening the cover easier and keeps it open in a secure position



Locks and keys included



Memory mount allows you to install or remove a Rodbox in seconds making the use of the Rod box hassle free



The packaging size is 41.9" x 15" x 21.7"



> DUAL HOLD TYPE

- Compatible with 22 to 32mm grip diameter and 16mm on tip side
- Holder position is removable to front, rear, right, or left
- Freshwater, saltwater and fly rods can be also loaded



Dual holder can securely carry both 1 piece and 2 piece rods



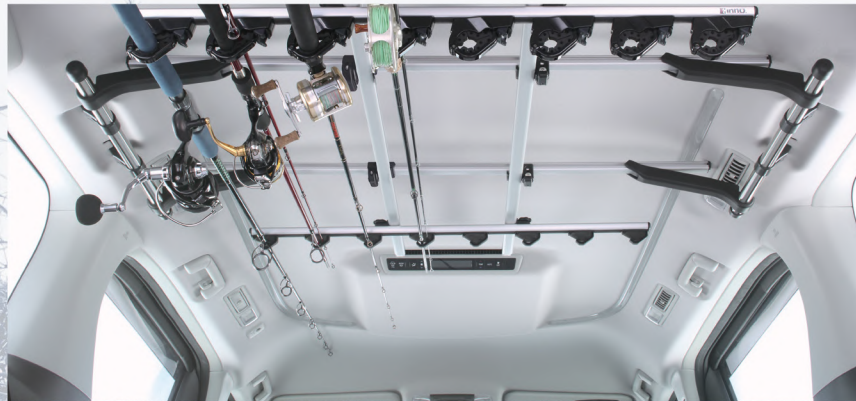
Detachable and expandable
New construction holder can be installed and removed easily



Front holder is compatible with rear grip diameters up to 16mm and tip diameters up to 8mm



- IF16G Rod holder dual 5 (5 rods)
- Up to 7 holders can be mounted by adding IF50BK (sold separately)



- IF18G rod holder dual 8 wide (8 rods)
- Up to 10 holders can be mounted by adding IF50BK (sold separately)

> J HOOK TYPE

- Compatible one piece, multi piece or gaffs
- Holder position is removable to front, rear, right, or left



New J hook design allows to carry small diameter tip



Front and Rear holder compatible with up to 32mm diameters. Can also carry 2-piece rods



- IF14G rod holder Jhook 7 (7 rods)
- For freshwater, saltwater and flyfishing rods