

2018 CATALOG

i inno
ADVANCED CAR RACKS





What's in a name? If that name happens to be **INNO**, it stands for nearly 40 years of designing and manufacturing the most **INNO**vative and technologically advanced car racks for active sports enthusiasts.

Founded in 1966 by Takaaki Murata, the inventor of the car seat headrest, Car Mate is today the largest manufacturer of automotive accessories in Japan. The company's car rack division was launched in 1976. Today **INNO** has almost a 60% share of the Japanese car rack market, with our own manufacturing facilities in Japan, China and the USA to keep up with the growing demand.

The breadth of our premium quality car racks and cargo systems are the result of decades of industry experience within the automotive accessory and rack business. Car Mate USA, Inc., is a wholly owned subsidiary of Car Mate Mfg. Co., Ltd. of Tokyo, Japan, doing business as **INNO** Advanced Car Racks. Car Mate is a publicly traded company on the JASDAQ in Japanese stock market.

INNO first appeared in the U.S. market in 2003. Not surprisingly, our racks have caught on quickly in the States and are considered an ideal match for the nation's growing legions of active "weekend warriors" and professional athletes who demand technological superiority. No other company tests its racks as thoroughly or as vigorously to make sure that they protect the cargo and the vehicle in what can often be harsh conditions. From our testing labs with UV-ray and salt spray testing booths to the race track designed for automotive manufacturers that we have used for real-world high speed testing, we take your safety and your investment in your gear seriously. Our attention to detail is what has made us different from other competitors. All of our products are backed by an industry leading warranty.

INNO's greatest **INNO**vation is quality and reliability that you can trust to protect you, your car, and your cargo.



Introduction To Your System Carrier

INNO's Universal Mounting Systems (UMS) offers various attachments that are directly compatible with aero, square, round and most factory cross bars perfect for all your gear.

Attachments (1)

Whether you are a sports enthusiast or a traveler of the open road, one must think how to carry their gear. INNO ATTACHMENTS do just that, allowing you to carry your bikes, water sports or winter sports equipment and more- or just stow extra baggage and equipment in a cargo box. All INNO ATTACHMENTS include universal mounts, fitting most factory and aftermarket cross bars.

Aero Base Rack Systems (2)

INNO's aerodynamic AERO BASE RACK SYSTEMS feature a solid black scratch resistant coated low profile design. Systems available for Flush Bars and Through Bars.

Base Rack Systems (3)

BASE RACK SYSTEMS are a combination of several items including; STAYS, CROSS BARS, and FIT KITS (vehicle dependent) creating a BASE RACK SYSTEM for your vehicle. Installation of a BASE RACK SYSTEM allows the use of ATTACHMENTS to be mounted to your vehicle.

Stays (4)

STAYS support different vehicle roof styles; smooth, raised side rails, track, and fixed point, allowing cross bars to be mounted securely. STAYS come as a set of four with locks and keys included.

Cross Bars (5)

Cross Bars are made of square hardened steel and elastomeric coating to resist corrosion, offering superior strength. CROSS BARS are available in eight different lengths offering the best look and fit for your vehicle.

Fit Kits (6)

Newly redesigned fit kits fit even better to each vehicle. FIT KITS may include any of the following to support your vehicle configuration: hooks, pads, brackets, covers, and assembly parts. FIT KITS work in conjunction with the STAYS supporting smooth roof, track, and fixed point BASE RACK SYSTEMS.

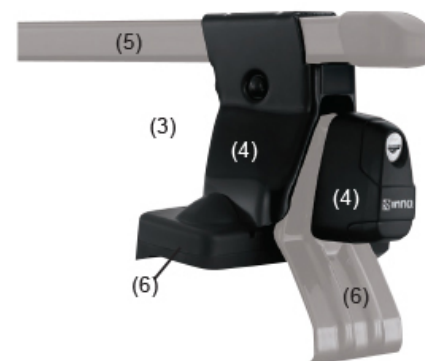
| | |
|---|------------|
| Aero Base Rack Systems | 1, 2 |
| Through Bar Type | 3 |
| Flush Bar Type | 4 |
| T-Slot Attachments | 5, 6 |
| Square Bar Systems | 7, 8 |
| Bike - Hitch Mount & Rooftop Racks | 9 thru 13 |
| Truck Bed Mounts | 14 |
| Cargo Boxes | 15 thru 22 |
| Snow | 23 thru 24 |
| Snow Dedicated Racks | 25 |
| Water Sports | 26, 27 |
| Camping | 28 |
| Fishing | 29 thru 31 |
| Sponsored Organizations | 32 |



(2)
Through Bar System



(2)
Flush Bar System



(5)
(3)
(4)
(4)
(6)
(6)



Contents

Aero Base Rack Systems ○ ○ ○ ○

New aerodynamic AERO BASE RACK SYSTEMS feature a solid black scratch resistant coated low profile design for a quiet ride and improved fuel economy
Systems available for Flush Bars and Through Bars

Raised Rail
XS100/XS150



Smooth Roof
XS201/XS250



Through Bar Type ○ ○ ○ ○

EZ-Mount

Secure And Easy Installation

Fine Finish Bar

Scratch Resistant Blasted Black Finish

Non-Cut Rubber

EZ-Slide Coated Non-Cut Trim

Quiet Ride

*20% Less Wind Noise

Aerodynamic, Reduced Height Design*

Aerodynamic, Reduced Height Design Low Profile Stay (*Excluding XS250). Aerodynamically Shaped Bar



*According To Internal Test Data Compared To INNO Square Bars



XS150
For Raised Rail



XS250
For Smooth Roof



XS350
For Fixed Points



XS450
For Flush Rail

Aero Base Rack Systems ○ ○ ○ ○

For raised rail, smooth roof, fixed point, and low rail style vehicles

- Glass Blasted Black Finish
- Low profile design for quiet ride and improved fuel economy
- Scratch resistant coating
- Locks and keys Included



Fig.1



Fig.2

Available Lengths:

| | | | |
|-----------------------|-----------------------|-----------------------|-----------------------|
| XB85: 33in. GB Black | XB108: 42in. GB Black | XB130: 51in. GB Black | XB153: 60in. GB Black |
| XB93: 36in. GB Black | XB115: 45in. GB Black | XB138: 54in. GB Black | XB160: 63in. GB Black |
| XB100: 39in. GB Black | XB123: 45in. GB Black | XB145: 57in. GB Black | |

- (Fig.1) The mold for filling the T-SLOT has double structures, the elastic base section and the smooth surface, which simplifies the positioning of the mounting bolts.
- (Fig.2) To fix the mounting bolts, just remove the stay cover / end cap, insert them into the T-SLOT, and slide.

Aero Base Rack Systems

Fixed Points
XS300/XS350



Flush Rail
XS400/XS450



Flush Bar Type ○ ○ ○ ○

EZ-Mount

Secure And Easy Installation

Fine Finish Bar

Scratch Resistant
Blasted Black Finish

Non-Cut Rubber

EZ-Slide Coated Non-Cut Trim

Quiet Ride

*20% Less Wind Noise
Compared to INNO
Square Bars

**Aerodynamic,
Low Down Design**

Aerodynamic, Reduced Height
Design. Aerodynamically Shaped
Bar and Low Profile Stay



*According To Internal Test Data



XS100
For Raised Rail



XS201
For Smooth Roof



XS300
For Fixed Points



XS400
For Flush Rail

Low Profile A stylish look made possible by lowering the bar height to the limit

Bar End Bar extension is eliminated to create a sense of integration

Aero Base (Flush Bar)

Square Base

Aero Base

Square Base

Height of XS201 is lower than IN-SUT

Installed example: Toyota Minivan

Installed example: Toyota Minivan



Aero Base Rack Systems

Through Bar Type

XS150

For Vehicles with raised side rails

- XS150 (Black)
- Rubber coated stainless steel straps
- Locks and keys included
- Set of 4



XS250

For Smooth Roof Vehicles Without Rain Gutters

- XS250 (Black)
- Locks and Keys included
- Requires the appropriate Fit Kit
- Set of 4



XS350

For vehicles with factory track systems and fixed points

- XS350 (Black)
- Locks and keys included
- Requires the appropriate Fit Kit
- Set of 4



XS450

For vehicles with flush mount rails

- XS450 (Black)
- Locks and keys included
- Requires the appropriate Fit Kit
- Set of 4



XS250 System Shown

Through Bar Type

Flush Bar Type ○ ○ ○ ○

➤ XS100 ○ ○ ○ ○

For Vehicles with raised side rails

- XS100 (Black)
- Rubber coated stainless steel straps
- Locks and keys included
- Set of 4



➤ XS201 ○ ○ ○ ○

For Smooth Roof Vehicles Without Rain Gutters

- XS201 (Black)
- Locks and Keys included
- Requires the appropriate Fit Kit
- Set of 4



➤ XS300 ○ ○ ○ ○

For vehicles with factory track systems and fixed points

- XS300 (Black)
- Locks and keys included
- Requires the appropriate Fit Kit
- Set of 4



➤ XS400 ○ ○ ○ ○

For vehicles with flush mount rails

- XS400 (Black)
- Locks and keys included
- Requires the appropriate Fit Kit
- Set of 4



- EZ-slide Plastic Coated & Non-cut Trim



- Scratch Resistant Bar
- Glass Blasted Black Finish



- Wing Shaped Aero Bar
- Reduced Wind Noise Over Other Systems
- Better Fuel Economy



- No Tools Required for XS100/150 Only
- Double Threaded Screw for Easier and Faster Installation for XS100 /150 Only



- Locks and Keys Included



- Greater Fitting Range: Fits Side Rail Circumference 2 3/4" to 8" XS100/150 Only



- Torque Indicator for XS201/250/400/450 to Prevent Over Tightening



- Bar-End Stop for Added Safety



Flush Bar Type

T-SLOT ONLY ATTACHMENTS

XA391

Fork Lock for Aero Base

- XA391 (Black)
- 1 bike capacity
- This attachment can be mounted only to the T-SLOT equipped Aero Base Bar
- A stylish installation is assured with the unexposed mounting bracket located under the bar



- New front fork holder with clutch tightening adjuster
- Oversize quick release handle allowing more leverage for small hands
- Lock and keys included
- Able to be mounted with the general quick release bikes with a fork width of 100mm and an axle shaft of 9mm
- Compatible with standard forks with 100mm spacing and 9mm quick release



XA445

Surf / SUP / Kayak / Canoe Locker for AeroBase

- XA445 (Black)
- 1 Kayak or 1 Canoe or 2 Wind Surfboards or 3 Shortboards or 2 Longboards or 2 SUP
- This attachment can be mounted only to the T-SLOT equipped Aero Base Bar.
- A stylish installation is assured with the unexposed mounting bracket located under the bars



- Floating strap system for easy loading
- Ratcheting mechanism for secure tightening
- Rubber coated stainless steel cable strap
- Board pads sold separately
- Locks and keys included



T-Slot Attachments

T-SLOT ONLY ATTACHMENTS



XA568 / XA569

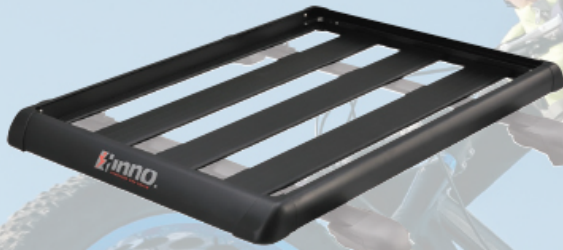


Shaper 80 for AeroBase

- XA568 (Black)
- This attachment can be mounted only to the T-SLOT equipped Aero Base Bar
- A stylish installation is assured with the unexposed mounting bracket located under the bar

Shaper 100 for AeroBase

- XA569 (Black)
- This attachment can be mounted only to the T-SLOT equipped Aero Base Bar
- A stylish installation is assured with the unexposed mounting bracket located under the bar



- Product Weight : 15 lbs (6.7kg)
- Max. Load : 110 lbs (50kg)
- Exterior Dimensions : 46 5/8" x 32 1/2" x 3" (1,185 x 830 x 75mm)
- Interior Dimensions : 41 3/8" x 30" x 2 1/8" (1,050 x 760 x 55mm)

- Product Weight : 17.4 lbs (7.9kg)
- Max. Load : 110 lbs (50kg)
- Exterior Dimensions : 46 5/8" x 41 7/8" x 3" (1,185 x 1,065 x 75mm)
- Interior Dimensions : 41 3/8" x 39 3/8" x 2 1/8" (1,050 x 1,000 x 55mm)



XA927



Gravity for AeroBase

- XA927 (Black)
- 6 skis or 4 Snowboards
- This attachment can be mounted only to the T-SLOT equipped Aero Base Bar

- A stylish installation is assured with the unexposed mounting bracket located under the bar
- Two-level height adjustment adaptors for compatibility with tall ski/snowboard bindings
- Locks and keys included



BRP12



T-Slot Adaptor

- BRP12
- T-Slot mounting hardware for cargo box
- (Fig.1) Fits cargo boxes shown in photo

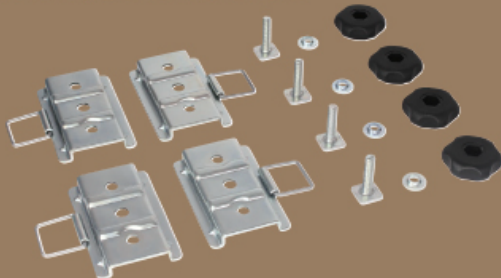


Fig.1

Available for

- Wedge Series BRM624 / 625 / 660 / 665
- Shadow Series BRA1110 / 1150 / 1170CA / 1210 / 1250 / 1450 / 1850
- Stream Box BRA766BK



INSUT

For smooth roof vehicles
Without Rain Gutters

- IN-SUT (Black)
- Torque control knob for preventing overtightening
- Locks and Keys included
- Requires the appropriate IN-SUT Fit Kit
- Set of 4



IN-FR

For vehicles with raised side rails

- IN-FR (Black or Silver)
- Rubber coated stainless steel straps
- Locks and keys included
- Set of 4



IN-XP

For vehicles with factory track systems and fixed points

- IN-XP (Black)
- Newly redesigned larger lever for easier installation
- Locks and keys included
- Requires the appropriate TR Fit Kit
- Set of 4



IN-AR

For vehicles with traditional raised side rails

- IN-AR (Black)
- Locks and Keys included
- Set of 4



IN-XR

For vehicles with factory track systems and fixed points

- IN-XR (Black or Silver)
- Locks and keys included
- Requires the appropriate TR Fit Kit
- Set of 4



IN-TR

For vehicles with unique track systems and mounting points

- IN-TR (Black)
- Locks and keys included
- Requires the appropriate TR Fit Kit
- Set of 4



Square Bar System



With RainGutters

For vehicles with rain gutters

- Black
- Includes wrench and nut locking system (IN-SDK, IN-MDK only)
- Locks and keys included (IN-LD only)
- Set of 4

Available Heights:

IN-LD: 5.5 in.

IN-SDK: 7.5 in.

IN-MDK: 11 in.



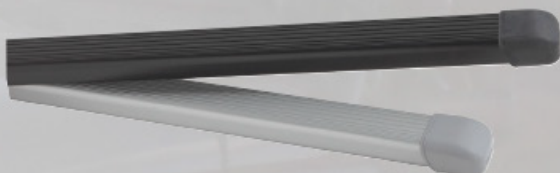
Square Bars

- Black or Silver
- Made of hardened steel with elastomeric coating
- Square profile
- Dimensions: width 0.9in (23mm) x height 1.3in (32mm)

Available Lengths:

IN-B107: 42in. Silver or Black; IN-B117: 46in. Silver or Black
IN-B127: 50in. Silver or Black

IN-B137: 54in. Black; IN-B147: 58in. Black; IN-B165: 65in. Black;
IN-434A: 71in. Black; IN-436L: 79in. Black



IN-JK

Joint Bar for IN-SUT Stay
For vehicles with short roof lines

- IN-JK (Black)
- Requires IN-SU / SUT rack system
- Creates a stronger and more stable platform
- Set of 2



Fairing (Universal Mount)

- Black or Carbon Fiber
- Universal mounting system, fits aero, square, round and most factory cross bars
- Made of strong durable 3 layer ABS plastic
- Reduces wind noise at high speeds
- Aerodynamic design for better fuel economy

Available Widths:

Carbon Fiber-

INA270: Small : 31" W x 4.5" H

INA271: Med : 40" W x 4.5" H

INA272: Large : 48" W x 4.5" H

Black-

INA260: Small : 31" W x 4.5" H

INA261: Med : 40" W x 4.5" H

INA262: Large : 48" W x 4.5" H



Carbon Fiber



Carbon Fiber Detail



Black



Square Bar System



Bike





INH540 ○ ○ ○ ○

Vertical Hang (Folding Type)

- INH540 (4 bike capacity)
- New hanging design makes it possible to carry up to four dual suspension bikes
- Only one arm goes into frame, instead of two, making it easier to fit complicated suspension designs
- Tilts down arms when not in use and folds down post to allow access to trunk
- Includes lock, keys, and security cable
- Fits 1 1/4" and 2" receivers with included adapter



Hitch Mount Rack



INH620/640



Aero Light 2 (Folding Type)

- INH620 (2 bike capacity, fits E-bike)
- INH640 (4 bike capacity)
- Affordable yet packed with features
- Tilts down arms when not in use and folds down post to allow access to trunk
- Includes lock, keys, and security cable
- Fits 1 1/4" and 2" receivers with included adapter



• INH640
(4 bike capacity)



INH330



Aero Light QM (Folding Type)

- INH330 (2 bike capacity)
- Light weight aluminum construction
- 30lbs empty weight
- Accommodates wheel sizes ranging from 20" to 29", and tire widths from road to 5" wide fat tire bike sizes
- Tilts down to allow access to trunk or rear car storage
- Easily foldable, independently adjustable wheel trays

- Built in handle for easy lifting and carrying, during installation or storage
- Adjustable height upright supports
- Ratcheting wheel holders
- Includes lock, keys, and security cable
- Fits 1 1/4" and 2" receivers with included adapter
- Folded dimensions - 29 1/2" H x 21 5/8" W x 12 1/4" D





INA389



Tire Hold 2

- INA389 Black (1 bike capacity)
- Newly Improved Tire Size adjuster for faster and easier Tire Size Adjustment
- Carrier secures bike without touching bike frame or cable brake systems
- No tools required
- Universal Mounting System, fitting to aero, square, round, and most factory cross bars
- Supports most bike frame styles

- Supported tire sizes: 20 in, 22-24 in, 26 in - 650B, 700c, 29 in max. tire width 2.7 inches
- Locking rear ratchet tire holder
- A lock, keys and locking bike cable included

Only 3 Steps To Secure Your Bike

- Step 1 Open the arms
- Step 2 The bike drops into the front arm using "Self-Standing Auto System"
- Step 3 Rear ratcheting arm secures and locks bike into position



INA389
Tire Hold 2



INA392



Multi Fork Lock

- INA392 Silver (1 bike capacity)
- All-in-one compatibility fitting 9mm, 15mm, and 20mm thru axle bikes.
- All new thru-axle compatible for three size axles
- Universal Mounting System, fitting to aero, square, round, and most factory cross bars
- The multi cradle is compatible with MTB and road bike tires

- Frame made of light weight Aluminum
- The carrier comes with anti-theft QR guard (Fig.1)
- A new model of asymmetry design
- Compatible with disc brakes
- Adaptors for 9mm, 15mm, and 20mm thru axle (Fig.2)
- No tools required
- A lock and keys included



INA392
Multi Fork Lock



(Fig.1)



(Fig.2)



For MTB



Multi Cradle



For Road Bike



INA391



Fork Lock III

- INA391 Silver (1 bike capacity)
- New front fork holder with clutch tightening adjuster
- Universal Mounting System, fitting to aero, square, round, and most factory cross bars
- Compatible with disc brakes
- Front fork holder with clutch tightening adjuster
- Oversize quick release handle allowing more leverage for small hands
- No tools required
- A lock and keys included



INA391
Fork Lock III



XA391
(Refer to Page 5)



INA387



Slim Fork

- INA387 Black (1 bike capacity)
- Light weight slim design
- Universal Mounting System, fitting to aero, square, round, and most factory cross bars
- Compatible with disc brakes
- All rim heights, no straps required
- Supports rear tires widths: 18c to 35c
- Front fork holder with clutch tightening adjuster.
- Oversize quick release handle
- Quick release for crossbar mounting
- Advanced rear wheel holder using proven bicycle brake technology
- Ratcheting tension system grips the wheel and rim like a brake pad
- Built in torque adjust allows perfect tension without over tightening
- No tools required
- A lock and keys included



INA387
Slim Fork





RT201 / RT202



Velo Gripper

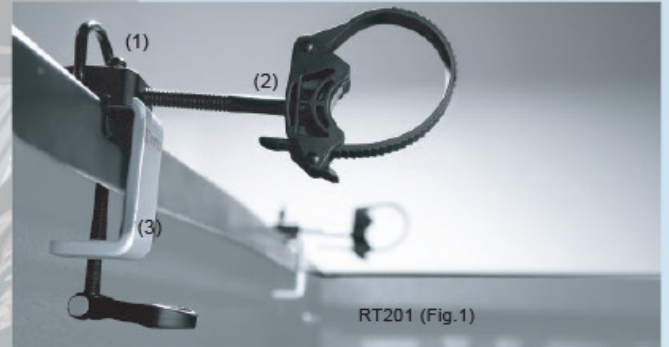
Put your bike in the bed of your truck without sacrificing precious cargo space with our new Velo Gripper bike mount.

- RT201 (1 bike capacity. Standard truck beds)
- RT202 (1 bike capacity. C-channel track systems)
- Does not require front tire removal

- Works with all types of bikes
 - These items work with standard bike cable locks (not included)
1. Comes with D-ring for tie down straps (Fig.1)
 2. Ratcheting fork holder
 3. No tools required and no holes to drill



RT202



RT201 (Fig.1)



RT101 / RT102



Truck Stay

- RT101 Standard Truck
- RT102 C-Channel Truck
- Designed for trucks with standard truck beds (RT101) or C-channel track systems (RT102)
- Allows mounting of attachments above the truck bed
- Compatible with square or round bars

- Silver
- Easy mount
- No holes to drill
- Set of 4



RT101



RT101



RT102



RT102

Truck Bed Mounts



Cargo Boxes



Phantom, Wedge and Shadow Series

INNOvative technology and advanced materials that reduce weight and maximize strength. Aerodynamic design for superior noise reduction. Stiffer base for stability.

- Dual side opening for easy loading (Fig.1)
- Ample storage capacity (Fig.2)
- User friendly locking mechanism for single handed opening (Fig.3)
- Universal Mounting System, fitting mounts to square, round, and most factory cross bars



Fig.1



Fig.2

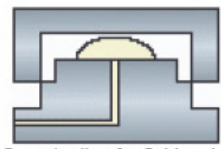


Fig.3

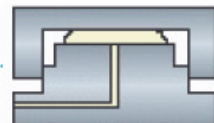
Technology

Utilizing technology that has been proven in Automotive Manufacturing, the SPM process of injection molding produces the most innovative cargo box.

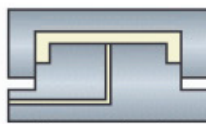
- Injection mold SPM process creates strong, durable, lightweight forming structures.
- An ideal combination of Press-forming and Injection-molding creating uniform thickness throughout.
- SPM integrated Servo-direct controls produce extraordinary product stability.
- Extra-low injection speed allows for increased forming structure, improving body stiffness and reducing torque.
- Up to 50% stronger than conventional Vacuum-forming



Open tooling for fluid resin



Inject



Press and cooling

M Memory Mount

Memory Mount allows you to install or remove a cargo box in seconds making the use of the cargo box hassle free.

- Universal Mounting System, fitting to aero, square, round, and most factory cross bars (Fig.1)
- Low profile maximizing the interior storage capacity of your cargo box
- No tools required
- Removable mounts reducing the chance of damage when storing the cargo box. (Fig.2)
- Built-in quick wheel adjustment for a secure fit to the cross bar (Fig.3)



Fig.1



Fig.2



Fig.3

Q Quick Mount

- Universal Mounting System, fitting to aero, square, round, and most factory cross bars (Fig.1)
- No tools required (Fig.2)
- Cross Bar height adjustment (Fig.3)



Fig.1



Fig.2



Fig.3



Cargo Boxes



BRM466



INNO Phantom 466

- BRM466BK (Gloss Black)
- BRM466WH (Gloss White)
- 8 Snowboards or 10 Skis
- 18 cubic feet capacity
- Dual-side opening for easy loading

- Memory Mount System **M**
- Safety lock system – key can only be removed once box is locked
- Universal Mounting System, fitting to aero, square, round, and most factory cross bars
- Locks and keys included



M Gloss Black (BRM466BK)



M Gloss White (BRM466WH)



INNO Phantom Series



BRM864



INNO Wedge Plus

- BRM864BK (Matte Black)
- 6 Snowboards or 8 Skis
- 13 cubic feet capacity
- Dual-side opening for easy loading

- Memory Mount System **M**
- Safety lock system – key can only be removed once box is locked
- Universal Mounting System, fitting to aero, square, round, and most factory cross bars
- Locks and keys included



M Matte Black (BRM665BK)



BRM665



INNO Wedge 665

- BRM665BK (Gloss Black)
- BRM665WH (Gloss White)
- 4-6 Snowboards, or 6-8 Skis
- 14 cubic feet capacity

- Memory Mount System **M**
- Safety lock system – key can only be removed once box is locked
- Universal Mounting System, fitting to aero, square, round, and most factory cross bars
- Locks and keys included



M Gloss Black (BRM665BK)



M Gloss White (BRM665WH)

T-Slot Adaptor (BRP12)
Sold Separately
(Refer to Page 6)





BRM624

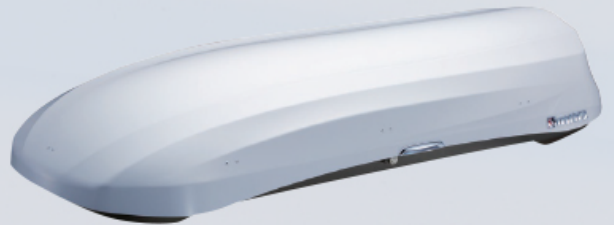


INNO Wedge 624

- BRM624BK (Gloss Black)
- BRM624WH (Gloss White)
- 6 Snowboards, or 8 Skis, or 2 Surfboards
- 13 cubic feet capacity
- Dual-side opening for easy loading



M Gloss Black (BRM624BK)



M Gloss White (BRM624WH)



T-SlotAdaptor (BRP12)
Sold Separately
(Refer to Page 6)



BRM660



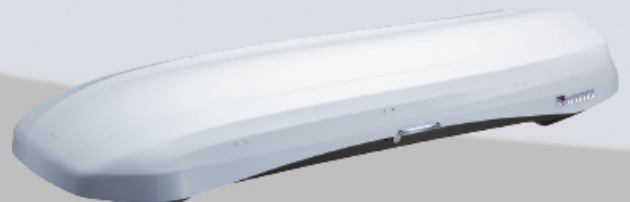
INNO Wedge 660

- BRM660BK (Gloss Black)
- BRM660WH (Gloss White)
- 4 Snowboards, or 8 Skis, or 2 Surfboards
- 11 cubic feet capacity
- Dual-side opening for easy loading

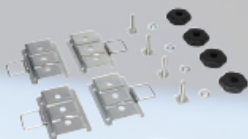
- Memory Mount System **M**
- Safety lock system – key can only be removed once box is locked
- Universal Mounting System, fitting to aero, square, round, and most factory cross bars
- Locks and keys included



M Gloss Black (BRM660BK)



M Gloss White (BRM660WH)



T-SlotAdaptor (BRP12)
Sold Separately
(Refer to Page 6)

INNO Shadow Series

BRA1250CA ○ ○ ○ ○

INNO Shadow16

- BRA1250BK (Matte Black)
- 6 Snowboards, or 8 Skis, or 2 Surfboards
- 13 cubic feet capacity
- Dual-side opening for easy loading



Carbon Fiber Print Detail



T-Slot Adaptor (BRP12)
Sold Separately
(Refer to Page 6)

- Quick Mount System for BRA1210BK **Q**
- Memory Mount System (BRP9) available for BRA1210BK **M**
- Safety lock system – key can only be removed once box is loaded
- Universal Mounting System, fitting to aero, square, round, and most factory cross bars
- Locks and keys included



Q Matte Black (BRA1210BK)



BRA1150 ○ ○ ○ ○

INNO Shadow 15

- BRA1150BK (Gloss Black)
- 6 Snowboards, or 8 Skis, or 2 Surfboards
- 11 cubic feet capacity
- Dual-side opening for easy loading



- Memory Mount System for BRA1150 **M**
- Safety lock system – key can only be removed once box is loaded
- Universal Mounting System, fitting to aero, square, round, and most factory cross bars
- Locks and keys included



M Gloss Black (BRA1150BK)



T-Slot Adaptor (BRP12)
Sold Separately
(Refer to Page 6)

BRA240 ○ ○ ○ ○

Ridge Box

- BRA240BK (Gloss Black)
- 8 cubic feet capacity
- Passenger-side opening for easy loading
- Compact size smaller vehicles with square style finish allows more cargo space.



- U-bolt Mount System **U**
- 3 layer ABS construction and beautiful finish
- Safety lock system – key can only be removed once box is loaded
- Universal Mounting System, fitting to aero, square, round, and most factory cross bars
- A lock and keys included



U Gloss Black (BRA240BK)

INNO Shadow Series

CARRIER ATTACHMENT **CARGO BOX**



BRM466BK



BRM864BM



BRS665BK



BRS624BK



| | Exterior Dimensions | Interior Dimensions | Capacity | Weight | Box Opening |
|------------------|---|------------------------------------|-----------|---------|----------------|
| BRM466 | 78.5"X37.5"X17.75" (16.5 inch) (200x95x45cm) | 73.0"X31"X15" (185x78x38cm) | 18 cu.ft. | 49 lbs. | Right and Left |
| BRM864 | 80"X33"X13.75" (12.4 inch) (205x84x35cm) | 72.0"X25.6"X11" (183x65x28cm) | 13 cu.ft. | 44 lbs. | Right and Left |
| BRM665 | 80"X33"X15.8" (14.2 inch) (203x84x40cm) | 72.0"X25.6"X13.4" (183x65x34cm) | 14 cu.ft. | 52 lbs. | Right and Left |
| BRM624 | 72.8"X33"X13.5" (12.2 inch) (185x84x34cm) | 66.1"X25.6"X11.2" (168x65x28cm) | 13 cu.ft. | 41 lbs. | Right and Left |
| BRM660 | 80"X33"X11" (9.6 inch) (203x84x28cm) | 72.0"X25.6"X9.2" (183x65x23cm) | 11 cu.ft. | 42 lbs. | Right and Left |
| BRA1250CA | 78.7"X31.9"X13.4" (14.2 inch) (200x81x34cm) | 72.0"X25.6"X11.0" (183x65x34cm) | 13 cu.ft. | 42 lbs. | Right and Left |
| BRA1150 | 78.7"X31.9"X11.8" (10.4 inch) (200x81x30cm) | 72.0"X25.6"X9.0" (183x65x23cm) | 11 cu.ft. | 42 lbs. | Right and Left |
| BRA240 | 55.1"X17.6"X13.4" (12.2 inch) (140x70x34cm) | 50.4"X23.6"X11.4" (128x60x29cm) | 8 cu.ft. | 20lbs. | Right |

*Quantities may vary based on binding size. **Fits most aftermarket cross bars and factory-installed racks. Check Fit Guide for specific vehicles.

*** The distance from the rear mounting place to the rear edge of the cargo box.



BRS660WH



BRA1250CA



BRA1150



BRA240BK

| Crossbar Compatibility | Top Material | Base Construction | Hatch Clearance | Ski Capacity | Snowboard Capacity | Features |
|------------------------|--------------|-------------------|-----------------|--------------|--------------------|---------------------------------------|
| Universal ** | 3-Layer ABS | Vacuum-forming | 12" | 8 - 10 | 4 - 8 * | Largest Size |
| Universal ** | 3-Layer ABS | SPM Injection | 12" | 6 - 8 | 4 - 6 * | Useful Size |
| Universal ** | 3-Layer ABS | SPM Injection | 12" | 6 - 8 | 4 - 6 * | Ergonomic Design |
| Universal ** | 3-Layer ABS | SPM Injection | 12" | 6 - 8 | 4 - 6 * | Ergonomic Design |
| Universal ** | 3-Layer ABS | SPM Injection | 12" | 6 - 8 | 4 * | Ergonomic Design |
| Universal ** | 3-Layer ABS | SPM Injection | 12" | 6 - 8 | 4 - 6 * | Ergonomic Design |
| Universal ** | 3-Layer ABS | SPM Injection | 12" | 6 - 8 | 4 * | Ergonomic Design |
| Universal ** | 3-Layer ABS | Vacuum-forming | 11.4" | -- | -- | Perfect fit for sedans and small cars |

Check how well it fits your car!!



TOYOTA RX300
BRA660BK VR Image

TOYOTA VAN
BRA665BK VR Image





Snow



INA927 ○ ○ ○ ○ ○

Gravity

- INA927 (Silver Black)
- 6 Skis or 4 Snowboards
- Compatible with tall ski/snowboard bindings
- Universal Mounting System, fitting to aero, square, round, and most factory cross bars
- Locks and keys included



Silver Black (INA927)



INA940 ○ ○ ○ ○ ○

Grab Max

- INA940 (Silver Black)
- 6 Skis or 4 Snowboards
- Compatible with most cross bars and thick ski bindings
- Universal Mounting System, fitting to aero, square, round, and most factory cross bars
- Mounts and locks to aero, square, round and factory bars in seconds



Silver Black (INA940)



Fig.1



Fig.2

- Wide cradle jaws hold the thickest skis and systems bindings on the market (Fig.1)
- Adjustable height for tall bindings (Fig.2)
- Locks and keys included



XA927 ○ ○ ○ ○ ○

Gravity for AeroBase

- XA927 (Black)
- 6 skis or 4 Snowboards
- This attachment can be mounted only to the T-SLOT equipped Aero Base Bar



Black (XA927)
(Refer to page 6)

- A stylish installation is assured with the unexposed mounting bracket located under the bar
- Two-level height adjustment adaptors for compatibility with tall ski/snowboard bindings
- Locks and keys included



Dedicated Racks ○ ○ ○ ○

Mounts directly to your vehicle's roof

If all you need to carry are your skis and snowboards, our line of dedicated snow sports racks provides the ultimate in sleek low profile style with all the innovative features INNO is known for. Without the need for a base rack system, dedicated carriers are also tops in value



Dual Angle

Our revolutionary Dual Angle System provides on-the-fly adjustments to the angle of the carrier for maximize loading capacity, improved aerodynamics, and easy loading. Keeps tall bindings off car's roof and make loading equipment easier on tall vehicles. Just pull a lever to raise it. Lower it back down for better aerodynamics when carrying small loads or when not in use

- 6 Skis or 4 Snowboards
- Dual Angle for smooth roofs without rain gutters (UK729) fit hooks required
- Dual Angle for raised factory rails (RH728).
- Dual Angle for fixed points (TX726) fit hooks required
- Adjusts to 2 positions: high and low
- Mountable onto fat raised rails (RH728)
- Rails are protected with rubber coated stainless steel straps carrying (RH728)
- Dual opening allows access from both sides of vehicle without stretching.
- Pull back on the lever for on-the-fly position adjustment (Fig1)
- Locks and keys included



Smooth Roofs (UK729)



Factory Rails (RH728)



Fixed Point (TX726)



Fig.1



MV276 ○ ○ ○ ○

Magnetic Ski Rack

- MV276
- 2 Skis or 1 Snowboard
- A great option for certain 2-door coupes and any other vehicles that are incompatible with more traditional style ski rack systems

- Compatible with virtually any vehicle with a smooth steel roof, uses powerful and flexible magnetic pads to provide a solid bond without scratching the paint
- Locks and keys included



Ideal for temporary uses such as a rental car ski rack or rental car snowboard carrier

INA446 / INA445 / XA445

Surf / SUP / Kayak / Canoe Locker

- INA446, INA445, XA445 (Black)
- The ultimate Surf, SUP, Kayak and Canoe rack – and it locks too. Versatility is this racks middle name supporting Kayaks, Canoes, Wind/Paddle/Sail/SUP/Long and Short surfboards.
- 1 Kayak or 1 Canoe or 2 Wind Surfboards or 3 Shortboards or 2 Longboards or 2 SUP
- Universal Mounting System, fitting to aero, square, round, and most factory cross bars (INA445/446 only)



- Floating strap system for easy loading
- Ratcheting mechanism for secure tightening (Fig.1, Fig.2)
- Rubber coated stainless steel cable strap
- (INA445/XA445) board pads sold separately
- (INA446) board pads included
- Locks and keys included (Fig.3)



INA455

Two Kayak Carrier

- INA455 (Black)
- 2 Kayaks
- Easy mount dual kayak carrier
- Universal Mounting System, fitting to aero, square, round, and most factory cross bars



- Includes cradles for two kayaks
- Foldable when not in use (Fig.1)
- INA451: Optional cradle set for INA450 (Fig.2)
- Pads and straps included



INA452

Multi Cradle

- INA452 (Black)
- 1 Kayak
- Set of 4 cradles for one kayak



- Universal Mounting System, fitting to aero, square, round, and most factory cross bars
- Pads and straps included
- Fits most Sit-On-Top kayaks



INA453

Kayak Lifter

- INA453 (Silver)
- Ultimate assist for all kayakers.
- Easy loading assist will help you to load the kayak without leaving a scratch on your car.
- Universal Mounting System, fitting to aero, square, round, and most factory cross bars



Board pad (INA771) sold separately

- Release the buckle (Fig.1)
- Push the kayak up with assist of the arm. Turn the kayak around (Fig.2)
- Fold the assist arm (Fig.3)



Fig.1



Fig.2



Fig.3

INA744

Board Locker

The ultimate board carrier for locking boards to your car

- INA744 (Black)
- 3 Shortboards or 2 Longboards
- Universal Mounting System, fitting to aero, square, round, and most factory cross bars
- Floating strap system for easy loading



- Ratcheting mechanism for secure tightening (Fig.1)
- Crane keeps straps for easy loading (Fig.2)
- Rubber coated stainless steel cable straps
- Integrated 24 inch padded bar
- Locks and keys included



Fig.1



Fig.2

IN731

Mast Holder

- IN731 (Black)
- Set of 2 holders
- Securely transports sailboard masts or kayak paddles.



IN551

Bar End Hook

- IN551 (Silver)
- Retractable accessory hook mounts to the end of the crossbar so you can hang your wetsuit, towels and more.



INA771

Multi Board Pads Carbon

- INA771 (Carbon Fiber)
- Set of 2
- Securely transports sailboard masts or kayak paddles
- Fits perfectly on thicker bars including Aero Bars
- 19 1/2" Width





Shaper 80 for Square Bar

- IN568 (Silver)
- This attachment can be mounted to square bars only
- Light weight Aluminum Material for greater loading capacity
- Vertical Panel Construction provides significant wind noise reduction
- Product Weight : 15 lbs (6.7kg)
- Max. Load : 110 lbs (50kg)
- Exterior Dimensions : 46 5/8" x 32 1/2" x 3" (1,185 x 830 x 75mm)
- Interior Dimensions : 41 3/8" x 30" x 2 1/8" (1,050 x 760 x 55mm)



Shaper 100 for Square Bar

- IN569 (Silver)
- This attachment can be mounted to square bars only
- Light weight Aluminum Material for greater loading capacity
- Vertical Panel Construction provides significant wind noise reduction
- Product Weight : 17.4 lbs (7.9kg)
- Max. Load : 110 lbs (50kg)
- Exterior Dimensions : 46 5/8" x 41 7/8" x 3" (1,185 x 1,065 x 75mm)
- Interior Dimensions : 41 3/8" x 39 3/8" x 2 1/8" (1,050 x 1,000 x 55mm)



XA568 / XA569
(For T-Slot Bars Only Refer to Page 6)

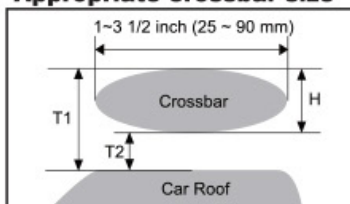


*Not Required For All Installations

| Loading Items | Items No. | H : Crossbar Height | | Required Parts | | T : Car roof - Crossbar (minimum) |
|-----------------|--------------------|-------------------------|----------------------|------------------------|-------------------|---------------------------------------|
| | | Max. with provided bolt | In case to use parts | Long bolt kit | Round bar adapter | |
| Ski / Snowboard | INA940 INA945 | ~ 1 3/8 inch (~ 35 mm) | ~ 2 inch (~ 50 mm) | ISF711 | ISF715 | T1 : 2 1/2 inch (65 mm) |
| | INA927 | | | | | T2 : 1 1/8 inch (30 mm) |
| Bike | INA382 | ~ 1 1/8 inch (~ 30 mm) | ~ 2 inch (~ 50 mm) | ISF714 | - | T1 : 2 inch (50 mm) |
| | INA387 | ~ 1 1/8 inch (~ 30 mm) | | ISF718 | | T2 : 1 1/8 inch (30 mm) |
| | INA388 | | | ISF719 | | T2 : 1 3/4 inch (45 mm) |
| | INA389 | | | ISF727 | | T1 : 2 3/8 inch (60 mm) |
| | INA391 | | | ISF725 | | T2 : 1 1/8 inch (30 mm) |
| | INA392 | | | ~ 1 3/4 inch (~ 45 mm) | | - |
| Surfboard | INA744 | ~ 1 inch (~ 25 mm) | ~ 2 inch (~ 50 mm) | ISF711 | ISF715 | T2 : 1 5/8 inch (40 mm) |
| Canoe / Kayak | INA444 | ~ 1 1/8 inch (~ 30 mm) | ~ 2 inch (~ 50 mm) | ISF714 | ISF715 | T1 : 2 1/8 inch (55 mm) |
| | INA445 / 446 | ~ 1 1/8 inch (~ 30 mm) | ~ 2 inch (~ 50 mm) | ISF722 | - | T2 : 1 1/8 inch (30 mm) |
| Kayak | INA450 | ~ 1 3/8 inch (~ 35 mm) | ~ 2 inch (~ 50 mm) | ISF711 & ISF716 x 2 | ISF715 | T1 : 2 inch (50 mm) |
| | INA451 | ~ 1 1/8 inch (~ 30 mm) | | ISF716 | | T2 : 1 1/8 inch (30 mm) |
| | INA452 | ~ 1 1/8 inch (~ 30 mm) | | ISF716 x 2 | | - |
| | INA455 | ~ 1 1/8 inch (~ 30 mm) | | ~ 2 inch (~ 50 mm) | | ISF722 & ISF716 x 2 |
| Kayak Lifter | INA453 | ~ 1 1/8 inch (~ 30 mm) | - | - | - | T2 : 1 1/8 inch (30 mm) |
| Fairing | INA260 / 261 / 262 | ~ 1 inch * (~ 25 mm) | ~ 2 inch (~ 50 mm) | ISF717 | - | T1 : 2 3/8 ~ 5 1/8 inch (60 ~ 130 mm) |
| | INA270 / 271 / 272 | | | | | T2 : 1 1/8 inch (30 mm) |

*INNO Aero Bar is not required

Appropriate crossbar size



Faring size for factory crossbars using interior measurements

- INA260 / 270 (Small size) = from 31" to 41" inches
- INA261 / 271 (Medium size) = from 41" to 49" inches
- INA262 / 272 (Large size) = from 49" inches or greater



Fishing





IF1

TENSION HOLD TYPE

For overhead carrying of 1-piece rods. Perfect for low height vehicles. Great for bass and trout rods

- IF1 Carries up to 5 rods
- Car overhead is spacious as there is no frame on the front side
- Rear holder uses a one-touch connector to hold the area above and below the reel
- A special sponge is utilized where the rod tip makes contact
- Loadable rod diameter ranges from 22 to 35mm on the grip side



IF2 / IF3

J HOOK STANDARD TYPE

Simple standard model with J hook. Perfect for bass and trout rods

- IF2 Carries up to 7 rods
- IF3 Carries up to 10 rods
- Connect the rear holder to the J hook and fix with a rubber band
- Rod can be attached or detached with just one hand
- Loadable rod diameter ranges from 22 to 32mm
- Holder section can be attached, detached, or moved with just a knob



* Photo shows IF3



IF4

J HOOK MULTI TYPE

Rock Fishing, Boat Fishing, Surf Casting, Telescopic and Jointed Rod Landing net handles and gaffs can also be carried. Has a wide range of uses

- IF4 Carries up to 7 rods
- Connect the rear holder to the J hook and fix with a rubber band
- Rod can be attached / detached with just one hand
- Loadable rod diameter ranges from 22 to 32mm
- Holder section can be attached, detached, or moved with just a knob





IF6 / IF7

DUAL HOLD TYPE

Dual holder can securely carry both 1 piece and 2 piece rods. Sea bass, ocean and fly rods can also be carried INNO's new high performance rear holder model has an electroplated chrome finish

- IF6 Carries up to 5 rods
- IF7 Carries up to 8 rods
- Rear holder can securely carry both 1 piece and 2 piece rods
- Compatible with grip diameters up to 34mm and tip diameters up to 16mm
- Detachable and expandable
- New construction holder can be installed and removed easily
- Maximum load capacity on the frame section: 15.4lbs or 7kg



* Photo shows IF6



IF8

8 ROD HOLDER DHW

- IF8 Carries up to 8 rods
- Wide type features a horizontal bar that is 20cm wider than the standard model
- Fits securely inside the roof of wide SUVs and minivans
- Maximum load capacity on the frame section: 15.4lbs or 7kg



Window Mount For Bass And Fly Rods

- ZR223 (Black)
- Two Rod holder.
- Quick and easy solution for carrying your rods.
- Suction cups attach to inside rear side windows.
- Clap has rubber cradles and push button opening.



Rod Holder Spec

| Type | Model No. | Rod capacity | Rod Type | | | | | | | | | Compatible diameters (mm) | | Maximum carrying weight (kg) |
|----------------------|-----------|--------------|--------------|------|---------|--------------|--------------|----------|--------------|--|------------------------------|---------------------------|-------------|------------------------------|
| | | | 1 piece rods | | | | 2 piece rods | | | Telescopic rods | | Front holder | Rear holder | |
| | | | trout | bass | jigging | BOAT FISHING | fly | sea bass | BOAT FISHING | ROCK FISHING BOAT FISHING SURF CASTING | Landing net handles gaffs | | | |
| TENSION HOLD TYPE | IF1 | 5 | ○ | ○ | ○ | ○ | — | — | — | — | — | — | 22~35 | 5 |
| J HOOK STANDARD TYPE | IF2 | 7 | ○ | ○ | ○ | ○ | — | — | — | — | — | 8 | 22~32 | 7 |
| | IF3 | 10 | ○ | ○ | ○ | ○ | — | — | — | — | — | 22~32 | 22~32 | |
| J HOOK MULTI TYPE | IF4 | 7 | — | — | — | — | — | ○ | ○ | ○ | ○ | 10 | 22~32 | |
| ONE TOUCH CLAMP TYPE | IF5 | 7 | ○ | ○ | ○ | ○ | — | — | — | — | — | — | — | |
| DUAL HOLD TYPE | IF6 | 5 | ○ | ○ | ○ | ○ | ○ | ○ | ○ | — | — | 8/16 ※1 | 16/34 ※2 | 1 |
| | IF7/IF8 | 8 | ○ | ○ | ○ | ○ | — | — | — | ○ | ○ | 8/16 ※3 | 22~32 | |
| ROOF SIDE TYPE | IF9 | 2~3 | ○ | ○ | △ | △ | — | — | — | ○ | ○ | — | — | |



Warning

•Refer to the Fit Guide. •Please understand that some rods cannot be loaded due to rod length or car length. •Before using this product, carefully read this instruction manual for proper use.



Note

•When the rod holder is mounted, head clearance reduces. Depending on the car type, there are cases that getting in the rear seat become difficult. Please understand beforehand. •Should a passenger's head contact the rod holder body or rods, the passenger will need to sit elsewhere.