



WESTIN[®]

AUTOMOTIVE PRODUCTS, INC.

WESTIN    HDX 

1 TRUSTED SOURCE SINCE 1977

PRODUCT CATALOG

**SEMA
EDITION**

STACK UP! THE DEGREE OF BRIGHTNESS IS UP TO YOU



BEAM PATTERNS:



EF2

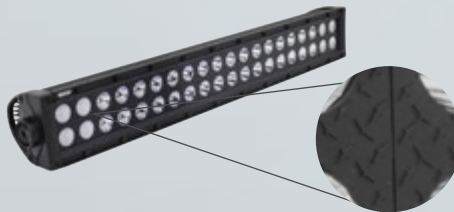
EF LOW PROFILE DOUBLE ROW
POWER OUTPUT: 36 – 280 WATTS



- Available in 6", 12", 20", 30", 40" and 50" lengths
- 3W Epistar LED chips
- Dust and moisture resistant lens
- Raw Lumens: 2,150 – 19,200
- Includes mounting hardware and pigtail connector
- Limited lifetime warranty
- Available in Combo or Spot beam

STEALTH

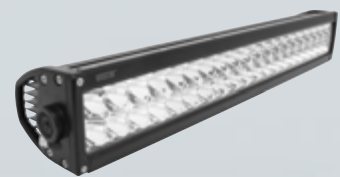
EP BLACK FACE WITH DIAMOND PLATE PATTERN
DOUBLE ROW / POWER OUTPUT: 12 – 300 WATTS



- Available in 2", 4", 6", 10", 12, 20", 30", 40" and 50" lengths
- 3W Cree LED chips
- 6063 extruded aluminum housing with die-cast ends
- Dust and moisture resistant lens
- Raw Lumens: 1,080 – 27,000
- Includes mounting hardware and pigtail connector
- Limited lifetime warranty
- Available in Flood and Combo beam

PERFORMANCE 2X

HP LOW PROFILE DOUBLE ROW
POWER OUTPUT: 12 – 300 WATTS



- Available in 2", 4", 6", 10", 20", 30", 40" and 50" lengths
- 3W Osram LED chips
- 6063 extruded aluminum housing with die-cast ends
- Dust and moisture resistant lens
- GORE® pressure equalizing vent
- Raw Lumens: 1,500 – 23,000
- Includes wiring harness with connector, switch, relay and in-line fuse and mounting hardware
- Limited lifetime warranty
- Available in Flood or Flex beam

NEW! STEALTH

**XP BLACK FACE WITH DIAMOND PLATE PATTERN
SINGLE ROW / POWER OUTPUT: 30 – 250 WATTS**



- Available in 6", 10", 20", 30", 40" and 50" lengths
- 5W Cree LED chips
- 6063 extruded aluminum housing with die-cast ends
- Dust and moisture resistant lens
- GORE® pressure equalizing vent
- Raw Lumens: 2,980 – 24,900
- Includes mounting hardware and pigtail connector
- Limited lifetime warranty
- Available in Flood and Combo beam

XTREME

**XP LOW PROFILE SINGLE ROW
POWER OUTPUT: 30 – 250 WATTS**



- Available in 6", 10", 20", 30", 40" and 50" lengths
- 5W Cree LED chips
- 6063 extruded aluminum housing with die-cast ends
- Dust and moisture resistant lens
- GORE® pressure equalizing vent
- Raw Lumens: 3,000 – 21,500
- Includes wiring harness with connector, switch, relay and in-line fuse and mounting hardware
- Limited lifetime warranty
- Available in Flood or Flex beam

FUSION5

**EF SINGLE ROW
POWER OUTPUT: 15 WATTS**



**PAIR PACK
AVAILABLE**

- Dimensions: 5.5" x 1.8"
- 3W Epistar LED chips
- Dust and moisture resistant lens
- Compact light ideal for ATVs
- Raw Lumens: 1,850
- Pivoting base mount bracket
- Includes mounting hardware and pigtail connector
- Limited lifetime warranty
- Available in Flex beam

RAZOR

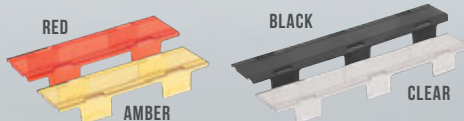
**IP SINGLE ROW
POWER OUTPUT: 60 WATTS**



- Dimensions: 12.2" x 1.8"
- 10W Cree LED chips
- Dust and moisture resistant lens
- HD die-cast aluminum housing with vertical heat sink fins
- Raw Lumens: 7,500
- Includes mounting hardware and pigtail connector
- Limited lifetime warranty
- Available in Flex beam

LED ACCESSORIES

PERFORMANCE 2X DOUBLE ROW LIGHT COVERS



LED WIRING HARNESS



LED BAR BRACKETS



CONTOUR 3.5" BULL BAR
30" LED LIGHT BAR BRACKETS / 32-20045

LED AUXILIARY LIGHTS

GO - PLAY - ANYWHERE
TOGETHER
LED PAIR PACKS
HYPER Q / FM4Q / FM6 / AXIS / QUADRANT

FM4Q LED FLUSH MOUNT
PART NO. 09-1218FM4

Shown on Spyder Marksman Front Bumper
Part No. 59-9525-12JKB5



ULTRA

IP LED AUXILIARY LIGHT
POWER OUTPUT: 80 WATTS



- Dimensions: 6.5" Round
- 10W Cree LED chips
- Dust and moisture resistant lens
- Raw Lumens: 7,200
- Die-cast aluminum housing
- Pivoting base mount bracket
- Includes mounting hardware and pigtail connector
- Limited lifetime warranty
- Available in Flood or Spot beam

STRIKER

MP LARGE OPTIC LED AUXILIARY LIGHT
POWER OUTPUT: 25 WATTS



- Dimensions: 3.4" Round
- 25W Cree LED chips
- Dust and moisture resistant lens
- Raw Lumens: 2,120
- Die-cast aluminum housing
- Pivoting base mount brackets
- Includes mounting hardware and pigtail connector
- Limited lifetime warranty
- Available in Flood or Spot beam

AXIS

HP LED AUXILIARY LIGHTS
POWER OUTPUT: 27 WATTS



- Dimensions: Round (4.7") and Square (4.6")
- 3W Osram LED chips
- Dust and moisture resistant lens
- Raw Lumens: 2,025
- Die-cast aluminum housing
- Pivoting base mount brackets
- Includes mounting hardware and pigtail connector
- Limited lifetime warranty
- Available in Flood or Spot beam

PAIR PACK
AVAILABLE

NEW!
HYPERQ

XP COMPACT LED AUXILIARY LIGHTS
POWER OUTPUT: 20 WATTS



- Dimensions: 3.2" x 3.4"
- 5W Cree LED chips
- Dust and moisture resistant lens
- Raw Lumens: 1,080
- Set of 2
- Pivoting base mount bracket
- Includes mounting hardware and pigtail connectors
- Limited lifetime warranty
- Available in Spot beam

**AVAILABLE IN
PAIR PACK ONLY**



FM4Q

HP LED FLUSH MOUNT
POWER OUTPUT: 12 WATTS



- Dimensions: 4.8" x 3.6"
- 3W Osram LED chips
- Die-cast aluminum housing
- Dust and moisture resistant lens
- Raw Lumens: 1,080
- Set of 2
- Includes mounting hardware and pigtail connectors
- Limited lifetime warranty
- Available in Flood beam

**AVAILABLE IN
PAIR PACK ONLY**



FM6

EF LED FLUSH MOUNT
POWER OUTPUT: 18 WATTS



- Dimensions: 7.7" x 2.4"
- 3W Bridgelux LED chips
- Die-cast aluminum housing
- Dust and moisture resistant lens
- Raw Lumens: 1,320
- Set of 2
- Includes mounting hardware and pigtail connectors
- Limited lifetime warranty
- Available in Flood beam

**AVAILABLE IN
PAIR PACK ONLY**



ODYSSEY

5P LED AUXILIARY LIGHT
POWER OUTPUT: 35 WATTS



- Dimensions: 4.4" x 4.2"
- 5W Osram LED chips
- Dust and moisture resistant lens
- Raw Lumens: 3,485
- Die-cast aluminum housing
- Pivoting base mount bracket
- Includes mounting hardware and pigtail connector
- Limited lifetime warranty
- Available in Flood or Spot beam

RANGER

IP LED AUXILIARY LIGHTS
POWER OUTPUT: 10 – 20 WATTS



- Available in 3 styles: (Round) 2.6" x 3.1", (Oval) 4.8" x 3.5" and (Rectangular) 4.2" x 2.4"
- 10W Cree LED chips
- Dust and moisture resistant lens
- Raw Lumens: 900 – 1,800
- Die-cast aluminum housing
- Pivoting base mount brackets
- Includes mounting hardware and pigtail connector
- Limited lifetime warranty
- Available in Flood or Spot beam

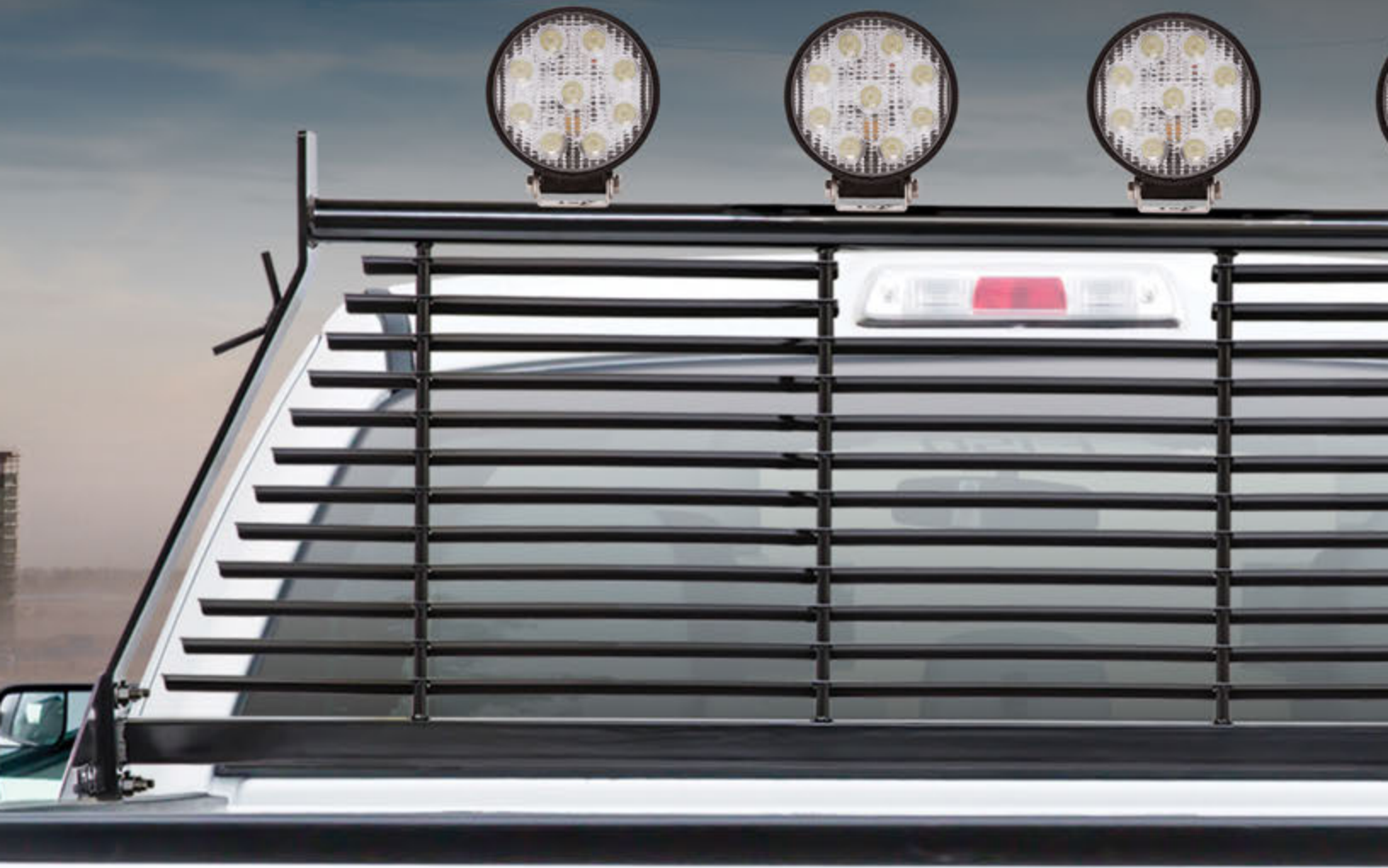
QUADRANT

XP COMPACT LED AUXILIARY LIGHT
POWER OUTPUT: 20 WATTS



- Dimensions: 3.0" x 2.6"
- 5W Cree LED chips
- Dust and moisture resistant lens
- Raw Lumens: 1,820
- Die-cast aluminum housing
- Pivoting base mount bracket
- Includes mounting hardware and pigtail connector
- Limited lifetime warranty
- Available in Flood or Spot beam

**PAIR PACK
AVAILABLE**



SWIVEL LED

SM LED WORK UTILITY LIGHT
POWER OUTPUT: 40 WATTS

9' CONNECTOR
CORD



- Dimensions: 5.7" x 4.7"
- 5W Osram LED Chips
- Strong Magnetic base
- Light swivels and pivots for quick repositioning
- Dust and moisture resistant lens
- Raw Lumens: 3,984
- Includes mounting hardware
- Includes 12v vehicle connector
- Limited lifetime warranty
- Available in Flood beam

HD ROUND LED

EF LED WORK UTILITY LIGHT
POWER OUTPUT: 27 WATTS



- Dimensions: 4.7" Round
- 3W Epistar LED Chips
- Durable ABS housing
- Dust and moisture resistant lens
- Raw Lumens: 1,450
- Pivoting base mount bracket
- Includes mounting hardware and pigtail connector
- Limited lifetime warranty
- Available in Flood beam

HD SQUARE LED

EF LED WORK UTILITY LIGHT
POWER OUTPUT: 27 WATTS



- Dimensions: 4.4" x 4.7"
- 3W Epistar LED Chips
- Durable ABS housing
- Dust and moisture resistant lens
- Raw Lumens: 1,450
- Pivoting base mount bracket
- Includes mounting hardware and pigtail connector
- Limited lifetime warranty
- Available in Flood beam

COOL RUNNING EFFICIENT WORK LIGHTS



HD ROUND LED WORK LIGHTS
PART NO. 09-12014B

*Shown on HD Headache Rack
Part No. 57-8025*

ROUND LED

EF LED WORK UTILITY LIGHTS
POWER OUTPUT: 18 - 27 WATTS



- Dimensions: 4.6" Round (6-LED configuration)
- Dimensions: 4.9" Round (9-LED configuration)
- 3W Epistar LED Chips
- Dust and moisture resistant lens
- Raw Lumens: 950 - 1,450
- Pivoting base mount bracket
- Includes mounting hardware and pigtail connector
- Limited lifetime warranty
- Available in Flood or Spot beam

SQUARE LED

EF LED WORK UTILITY LIGHTS
POWER OUTPUT: 15 - 27 WATTS



- Dimensions: 4.3" x 5.0" (5-LED configuration)
- Dimensions: 4.6" x 5.3" (9-LED configuration)
- 3W Epistar LED Chips
- Dust and moisture resistant lens
- Raw Lumens: 800 - 1,450
- Pivoting base mount bracket
- Includes mounting hardware and pigtail connector
- Limited lifetime warranty
- Available in Flood or Spot beam

MORE STYLES MORE APPLICATIONS THAN ANY OTHER MANUFACTURER!

HDX DROP STEPS

TEXTURED BLACK POWDER COAT

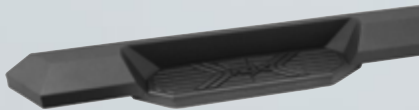


- Mount kit included
- Die stamped steel step areas for maximum traction
- Removable step plate for easy cleaning
- Solid 1-piece construction
- Fits tight to rocker panel for a better fit and rugged look
- Chiseled style complements HDX Bumpers
- U.S. Patent No. 8,864,158
- Textured black powder coat finish

FINISH: Textured Black
MATERIAL: Steel
WARRANTY: 3 Year

HDX XTREME BOARDS

TEXTURED BLACK POWDER COAT



- Mount kit included
- Oversized step areas for easier cab entry and exit
- Injection molded polymer step pad
- Solid 1-piece construction
- Chiseled style complements HDX Bumpers
- U.S. Patent No. 8,864,158
- Textured black powder coat finish

FINISH: Textured Black
MATERIAL: Steel
WARRANTY: 3 Year

GENX OVAL STEPS

304 STAINLESS STEEL / BLACK POWDER COAT



- Mount kit included
- 4" upper oval tube
- Drop step is made of 2" oval tube
- Fits tight to rocker panel
- Textured step pad
- Welded and sealed tube ends
- U.S. Patent No. 6588793, 6874801

FINISH: Polished
MATERIAL: 304 Stainless Steel
WARRANTY: Lifetime

FINISH: Black Powder Coat
MATERIAL: E-Coated Steel
WARRANTY: 3 Year



SEMA Award Winning
Exterior Accessory Product!

HDX DROP STEPS
PART NO. 56-13945

PRO TRAXX[®] 4

304 STAINLESS STEEL / BLACK POWDER COAT



- Mount kit included
- 4" oval tube
- 30° OE style bends
- Fully welded domed ends
- Injection molded polymer step pad
- 4" wide step area with Westin logo
- Bolt-on installation – no drilling required*

*On most applications

FINISH: Polished **FINISH:** Black Powder Coat
MATERIAL: 304 Stainless Steel **MATERIAL:** E-Coated Steel
WARRANTY: Lifetime **WARRANTY:** 3 Year

PRO TRAXX[®] 5

304 STAINLESS STEEL / BLACK POWDER COAT



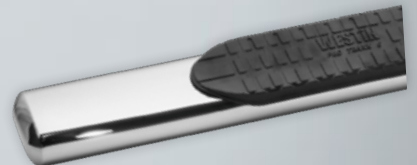
- Mount kit included
- 5" oval tube
- 30° OE style bends at each end of the tube
- Fully welded domed ends
- Injection molded polymer step pad
- 5" wide step area with Westin logo
- Bolt-on installation – no drilling required*

*On most applications

FINISH: Polished **FINISH:** Black Powder Coat
MATERIAL: 304 Stainless Steel **MATERIAL:** E-Coated Steel
WARRANTY: Lifetime **WARRANTY:** 3 Year

PRO TRAXX[®] 6

304 STAINLESS STEEL / BLACK POWDER COAT



- Mount kit included
- 6" oval tube
- Straight tube design
- Fully welded domed ends
- Injection molded polymer step pad
- Bolt-on installation – no drilling required*

*On most applications

FINISH: Polished **FINISH:** Black Powder Coat
MATERIAL: 304 Stainless Steel **MATERIAL:** E-Coated Steel
WARRANTY: Lifetime **WARRANTY:** 3 Year

NERF STEP BARS



STEP IN! WE MAKE IT EASY

6" PREMIER OVAL STEPS
PART NO. 22-6040
Bracket Kit Part No. 22-0015

PLATINUM 4" OVAL STEPS

304 STAINLESS STEEL / BLACK POWDER COAT



- Mount kit included
- OE style oval tube steps
- 90° mandrel bends**
- Injection molded polymer step pad
- Recessed step area
- Bolt-on installation – no drilling required*

*On most applications

FINISH: Polished

MATERIAL: 304 Stainless Steel

WARRANTY: Lifetime

FINISH: Black Powder Coat

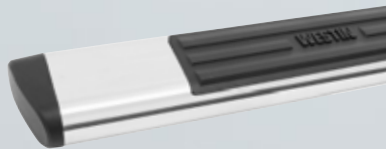
MATERIAL: E-Coated Steel

WARRANTY: 3 Year

**Some applications may feature ends with 30° bends

6" PREMIER OVAL STEPS

304 STAINLESS STEEL / BLACK POWDER COAT



- Mount kit sold separately
- Extra wide 6" oval side step tubes
- Injection molded polymer step pad
- Molded end caps give the steps a finished OE look
- Solid construction
- Vehicle specific mounting kit is sold separately
- Bolt-on installation – no drilling required*

*On most applications

FINISH: Polished

MATERIAL: 304 Stainless Steel

WARRANTY: Lifetime

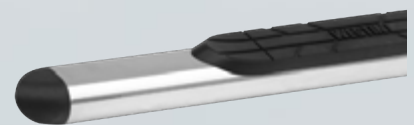
FINISH: Black Powder Coat

MATERIAL: E-Coated Steel

WARRANTY: 3 Year

4" OVAL TUBE STEPS

304 STAINLESS STEEL / BLACK POWDER COAT



- Mount kit sold separately
- 4" oval tube
- Cradle mounted tubes
- Injection molded polymer step pad
- Molded oval end caps
- Bolt-on installation – no drilling required*

*On most applications

FINISH: Polished

MATERIAL: 304 Stainless Steel

WARRANTY: Lifetime

FINISH: Black Powder Coat

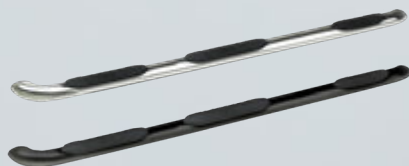
MATERIAL: E-Coated Steel

WARRANTY: 3 Year



PLATINUM 4" OVAL WTW

304 STAINLESS STEEL / BLACK POWDER COAT



- Mount kit included
- Wheel-to-Wheel (WTW) length step bars
- Third step for easy truck bed access
- 4" oval tube
- Front mount features a 90° bend
- 30° bend at far end
- Isolator bracket included
- Bolt-on installation – no drilling required*

**On most applications*

FINISH: Polished

MATERIAL: 304 Stainless Steel

WARRANTY: Lifetime

FINISH: Black Powder Coat

MATERIAL: E-Coated Steel

WARRANTY: 3 Year

PRO TRAX[®] 5 WTW

304 STAINLESS STEEL / BLACK POWDER COAT



- Mount kit included
- Wheel-to-Wheel (WTW) length step bars
- 5" oval tube
- Third step for easy truck bed access
- 30° OE style bends at each end of the tube
- Fully welded domed ends
- Injection molded polymer step pad
- Bolt-on installation – no drilling required*

**On most applications*

FINISH: Polished

MATERIAL: 304 Stainless Steel

WARRANTY: Lifetime

FINISH: Black Powder Coat

MATERIAL: E-Coated Steel

WARRANTY: 3 Year

NERF STEP BARS

SIERRA

SIGNATURE STEP BARS
PART NO. 25-3815

E-SERIES STEP BARS

STAINLESS STEEL / BLACK POWDER COAT

- Mount kit included
- 3" round step bars
- Vehicle specific applications
- Injection molded polymer step pad
- Recessed step area
- Bolt-on installation – no drilling required*

**On most applications*

FINISH: Polished

MATERIAL: Stainless Steel

WARRANTY: Lifetime

FINISH: Black Powder Coat

MATERIAL: E-Coated Steel

WARRANTY: 3 Year





SIGNATURE OF QUALITY

SIGNATURE STEP BARS

CHROME PLATED STEEL / BLACK POWDER COAT



- Mount kit included
- 3" round step bars
- Made from corrosion resistant coated steel
- Superior mounting design
- Recessed step area
- Injection molded polymer step pad
- Heavy wall tube
- Bolt-on installation – no drilling required*

**On most applications*

FINISH: Chrome
MATERIAL: Steel
WARRANTY: 3 Year

FINISH: Black Powder Coat
MATERIAL: Galvanized Steel
WARRANTY: 5 Year

PLATINUM STEP BARS

CHROME PLATED STAINLESS STEEL



- Mount kit included
- 3" round chrome plated stainless steel steps
- Vehicle specific applications
- Heavy wall tube
- Injection molded polymer step pad
- Recessed step area
- Bolt-on installation – no drilling required*

**On most applications*

FINISH: Chrome
MATERIAL: 304 Stainless Steel
WARRANTY: Lifetime

E-SERIES STEP BARS – SS

304 STAINLESS STEEL W/ STAINLESS BRACKETS



- Mount kit included
- Stainless steel brackets
- Zinc coated hardware
- Polished stainless 3" round step bars
- Recessed step area
- Maximum rust protection
- Bolt-on installation – no drilling required*

**On most applications*

FINISH: Polished
MATERIAL: 304 Stainless Steel
WARRANTY: Lifetime

FUNCTION IS A MUST. STYLE IS A CHOICE

NEW! R5 BOARDS

304 STAINLESS STEEL / BLACK ALUMINUM



BRACKET COVER



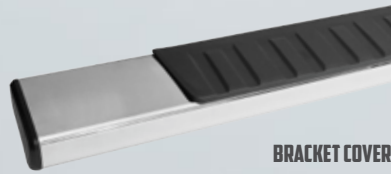
- Mount kit included
- Injection molded polymer step pad
- 5" wide step area
- Includes injection molded bracket covers

FINISH: Polished
MATERIAL: 304 Stainless Steel
WARRANTY: Lifetime

FINISH: Textured Black
MATERIAL: Aluminum
WARRANTY: 3 Year

R7 BOARDS

304 STAINLESS STEEL / BLACK ALUMINUM



BRACKET COVER



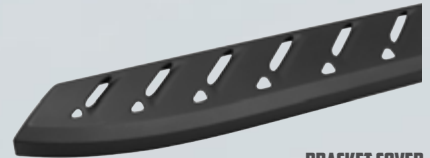
- Mount kit included
- OE style
- Injection molded polymer step pad
- Recessed board design conceals brackets
- Includes injection molded bracket covers

FINISH: Polished
MATERIAL: 304 Stainless Steel
WARRANTY: Lifetime

FINISH: Black Powder Coat
MATERIAL: Aluminum
WARRANTY: 3 Year

THRASHER BOARDS

TEXTURED BLACK POWDER COAT



BRACKET COVER



- Mount kit included
- Aggressive chiseled appeal
- 1-piece stamped steel construction
- Indented louvers
- Includes injection molded bracket covers

FINISH: Textured Black
MATERIAL: Steel
WARRANTY: 3 Year



**THRASHER BOARDS
PART NO. 28-81025**

SURE-GRIP AND MOLDED RUNNING BOARDS

EXTRUDED RUBBER STEP AND ALUMINUM BASE BOARD



- Mount kit sold separately
- FINISH:** Brite, Brushed and Black
- MATERIAL:** Extruded Rubber Step and Aluminum Base Board
- WARRANTY:** 5 Year



Light Kit / Part No. 27-6000 Sold Separately

MOLDED POLYMER STEP AND ALUMINUM BASE BOARD



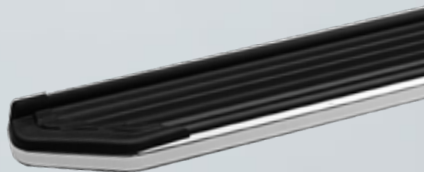
- Mount kit sold separately
- FINISH:** Black
- MATERIAL:** Injection Molded Top and Aluminum Base Board
- WARRANTY:** 5 Year



Also available in lighted

STYLIZED RUNNING BOARDS

304 STAINLESS STEEL / BLACK POWDER COAT



- Mount kit included
- 5" wide rubberized step surface
- Stylized molded trim piece at both ends
- Includes gap strip
- Cradle mounted boards
- 304 stainless steel trim with polished finish or
- mild steel trim with black powder coat finish
- Bolt-on installation – no drilling required*
- *On most applications

FINISH: Polished
MATERIAL: Aluminum Base Board
WARRANTY: Lifetime

FINISH: Black Powder Coat
MATERIAL: Aluminum Base Board
WARRANTY: 5 Year

HD RUNNING BOARDS

TEXTURED BLACK / SILVER POWDER COAT



- Mount kit included
- 14 gauge diamond tread
- Heavy duty welded steel construction
- Step surface includes 1" splash guard made of a continuous single sheet of metal
- Optional boot scraper included
- Silver finish available for vans only
- Made in the USA

FINISH: Textured Black
MATERIAL: Steel
WARRANTY: 3 Year

FINISH: Silver Powder Coat
MATERIAL: Steel
WARRANTY: 3 Year

MAKE A BOLD FRONT-END STATEMENT

CONTOUR 3.5" BULL BAR

304 STAINLESS STEEL / BLACK AND BLACK TEXTURED



- Mount kit included
- Contoured to vehicle front end
- Made of 3.5" tube
- 30" LED light mounting brackets (Part No. 32-20045)
- 30" curved LED light mounting brackets (Part No. 32-20055)
- Multi-faceted molded bushings with exposed S/S fasteners
- 4 mounting points on top of center bar

FINISH: Polished

MATERIAL: 304 Stainless Steel

WARRANTY: Lifetime

FINISH: Black or Textured Black

MATERIAL: Galvanized Steel

WARRANTY: 3 Year



LED BAR MOUNTING BRACKETS
SOLD SEPARATELY

E-SERIES BULL BAR

304 STAINLESS STEEL / BLACK POWDER COAT



- Mount kit included
- 3" tubing
- Brushed skid plate design
- Fully welded cross tube
- 2 light mounting points on the top of center bar
- 20" LED light mounting brackets (Part No. 32-0045)
- License plate re-locator sold separately (Part No. 32-0055)

FINISH: Polished

MATERIAL: 304 Stainless Steel

WARRANTY: Lifetime

FINISH: Black Powder Coat

MATERIAL: Steel

WARRANTY: 3 Year



LICENSE PLATE RE-LOCATOR

ULTIMATE BULL BAR

304 STAINLESS STEEL / BLACK POWDER COAT



- Mount kit included
- 2.5" for compact trucks and SUVs
- 3" tube for full-sized trucks and SUVs
- 20" LED light mounting brackets (Part No. 32-0045)
- Molded transition bushings
- 2 mounting points on the top of center bar

FINISH: Chrome

MATERIAL: 304 Stainless Steel

WARRANTY: Lifetime

FINISH: Black Powder Coat

MATERIAL: Galvanized Steel

WARRANTY: 5 Year



20" LED LIGHT
BRACKETS FOR 3" TUBE
APPLICATIONS ONLY



**CONTOUR 3.5" BULL BAR
PART NO. 32-31005T**

*Shown with 30" Stealth Light Bar
Part No. 09-12212-60C*

*30" LED Light Bar Brackets
Part No. 32-20045*

CONTOUR SAFARI BAR

304 STAINLESS STEEL / BLACK POWDER COAT



- Mount kit included
- 2.0" or 2.5" tube (varies by application)
- Continuous compound bends
- HD Bar Clamp 2.0" (Part No. 32-20005)
- HD Bar Clamp 2.5" (Part No. 32-20015)
- Optional black light tabs included

FINISH: Polished
MATERIAL: 304 Stainless Steel
WARRANTY: Lifetime

FINISH: Black Powder Coat
MATERIAL: E-Coated Steel
WARRANTY: 3 Year



**HD BAR CLAMPS
SOLD SEPARATELY**

SAFARI LIGHT BAR

304 STAINLESS STEEL / BLACK POWDER COAT



- Mount kit sold separately
- Curved contour bends
- 2" tube
- Universal bars
- Welded light mounting tabs

FINISH: Polished
MATERIAL: 304 Stainless Steel
WARRANTY: Lifetime

FINISH: Black Powder Coat
MATERIAL: Steel
WARRANTY: 5 Year

OFF-ROAD LIGHT BAR

304 STAINLESS STEEL / BLACK POWDER COAT



- Mount kit included
- For post mount LED lights
- Constructed from 2 in. steel tubing
- Accommodates lights up to 8" in diameter
- Welded light mounting points
- Vehicle specific applications
- U.S. Patent No. D521,923

FINISH: Polished
MATERIAL: 304 Stainless Steel
WARRANTY: Lifetime

FINISH: Black Powder Coat
MATERIAL: Steel
WARRANTY: 3 Year



**6" OFF-ROAD LIGHTS
AVAILABLE**

HEAVY DUTY TRUCKS NEED HEAVY DUTY GEAR



HDX WINCH MOUNT GRILLE GUARD
PART NO. 57-93685

Shown with HDX Flush Mount LED Kit
10" LED Lights (Set of 2) w/ Wiring Harness
Part No. 57-0035

SPORTSMAN GRILLE GUARD

304 STAINLESS STEEL / BLACK POWDER COAT



- 1-piece solid construction
- Uprights capped 1.5" rubber strips
- Single or double hood bar (varies by application)
- Removable wire light guards
- Mounts up to 4 auxiliary lights across center channel

FINISH: Polished
MATERIAL: 304 Stainless Steel
WARRANTY: Lifetime

FINISH: Black Powder Coat
MATERIAL: Steel
WARRANTY: 5 Year



MAX® TOW HOOK
PART NO. 46-3005

HDX GRILLE GUARD

304 STAINLESS STEEL / BLACK POWDER COAT



- 2" tube, full wraparound wings
- Full punch plate grille
- 1-piece solid construction
- Uprights capped with 2.75" wide rubber strips

FINISH: Polished
MATERIAL: 304 Stainless Steel
WARRANTY: Lifetime

FINISH: Black Powder Coat
MATERIAL: E-Coated Steel
WARRANTY: 3 Year



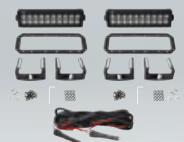
HDX LIGHT CLAMPS
AVAILABLE IN BLACK
OR POLISHED

NEW! HDX FLUSH MOUNT LED KIT

SET OF 2 — AVAILABLE IN 6" AND 10" LENGTHS



- Installs onto Westin HDX Grille Guard punch plate
- Includes (2) Stealth double row LED light bars, (2) faceplates, (2) adjustable slider brackets, (1) dual connecting wiring harness and mounting hardware
- Adjustable slider brackets fits most 6" and 10" double row LED light bars
- Choose mounting method: Cut-out punch plate or direct bolt-on installation
- Limited lifetime warranty



KIT INCLUDES



SPORTSMAN WINCH MOUNT

304 STAINLESS STEEL / BLACK POWDER COAT



- HD Tray brackets mount directly to vehicle frame
- Winch trays tested to a minimum straight line pull of 16,500 lbs.
- Fits most medium frame 8,000-12,000 lbs. winches (up to 10.25" tall)

FINISH: Polished
MATERIAL: 304 Stainless Steel
WARRANTY: Lifetime

FINISH: Black Powder Coat
MATERIAL: Steel
WARRANTY: 3 Year



FACEPLATE
 SOLD SEPARATELY

HDX WINCH MOUNT

304 STAINLESS STEEL / BLACK POWDER COAT



- HD Tray brackets mount directly to vehicle frame
- Winch trays tested to a minimum straight line pull of 16,500 lbs.
- Fits most medium frame 8,000-12,000 lbs. winches (up to 10.25" tall)

FINISH: Polished
MATERIAL: 304 Stainless Steel
WARRANTY: Lifetime

FINISH: Black Powder Coat
MATERIAL: E-Coated Steel
WARRANTY: 3 Year

LICENSE PLATE RE-LOCATOR

OPTIONAL ACCESSORY

- Mounts directly to winch tray or HDX Front Bumper
- Hinged "flip-up" system
- Clasp closure holds license plate in place



FINISH: Black Powder Coat **PART NO. 46-20055**
MATERIAL: Steel
WARRANTY: 3 Year

SENSOR RE-LOCATOR

HARDWARE INCLUDED

- Re-locates OE parking sensors
- Set of 2
- 20 gauge pigtail and connectors included
- Mount directly to grille guard uprights*
- Patent pending



FINISH: Polished
MATERIAL: 304 Stainless Steel
WARRANTY: Lifetime

FINISH: Black Powder Coat
MATERIAL: E-Coated Steel
WARRANTY: 3 Year
 *Drilling required

WESTIN HDX

HEAVY DUTY

XTREME

TRUCK GEAR

HDX FRONT BUMPER

MOUNTING BRACKETS INCLUDED

- Made of 7 gauge steel
- 1-piece fully welded construction
- Aggressive chiseled design
- Fits most medium frame 8,000-12,000 lbs winches (up to 10.25" tall)
- Fits remote solenoid winches only*
- Pre-drilled for winch and fairlead mounting
- Laser-cut openings to allow engine cooling
- Built to receive (2) 10" LED light bars
- Optional Light Bar and Pre-Runner Bar sold separately
- 1" thick HD shackle mounts
- Application specific designs
- Available in textured black or raw finish

FINISH: Textured Black
MATERIAL: Steel

WARRANTY
FINISH: 1 Year
MATERIAL: Limited Lifetime

*Will not fit integrated winches



OPTIONAL LIGHT BAR SOLD SEPARATELY



OPTIONAL PRE-RUNNER BAR SOLD SEPARATELY

AVAILABLE ACCESSORIES:



XTREME
20" SINGLE ROW LED LIGHT BAR



PERFORMANCE2X OR STEALTH
10" DOUBLE ROW LED LIGHT BAR



**HDX FRONT BUMPER
PART NO. 58-141515**

*Shown with (2) 10" Performance2X Light Bars
Part No. 09-12280-20S*

*HDX Bumper LED Light Bar
Part No. 58-95-0035*

HDX REAR BUMPER

W/ 2 LED FLUSH MOUNT LIGHTS INCLUDED

- Made of 7 gauge steel
- 1-piece fully welded construction
- 1" thick HD shackle mounts
- License plate illumination lights included
- Laser-cut HDX Logo on ends
- Application specific designs
- Mounting brackets included
- Available with or without provision for back-up sensors for most applications
- Available in textured black or raw finish

FINISH: Textured Black
MATERIAL: Steel

WARRANTY
FINISH: 1 Year
MATERIAL: Limited Lifetime



FM6

**LED FLUSH MOUNT
POWER OUTPUT: 18 WATTS**

LIGHTS INCLUDED!

OE BUMPER WINCH MOUNTING



MAX[®]
WESTIN
WINCH MOUNTING SYSTEM

MAX WINCH MOUNTING SYSTEM
PART NO. 46-21175

MAX WINCH TRAY

BASE UNIT

- HD brackets mount directly to vehicle frame
- Winch tray tested to a maximum straight line pull of 16,500 lbs.
- Fits most medium frame 8,000-12,000 lbs. winches (up to 10.25" tall)
- Pre-drilled for quick mounting of hawse or roller fairlead
- Optional MAX Bull Bar/Light Bar
- Optional MAX Faceplate
- Optional MAX Tow Hooks (Part No. 46-3005 – 2 needed)

FINISH: Black Powder Coat
MATERIAL: Steel
WARRANTY: 3 Year



AVAILABLE ACCESSORIES:



OR-9500 WINCH



MAX TOW HOOK
PART NO. 46-3005



HAWSE FAIRLEAD
PART NO. 47-3410



LICENSE PLATE
RE-LOCATOR
PART NO. 46-20055

OFF-ROAD READY! INSTALLERS PREFER WESTIN®

MAX FACEPLATE

OPTIONAL



- Mounts directly to MAX Winch Tray
- Application specific
- Tow hook openings
- 14 gauge polished stainless steel

FINISH: Polished
MATERIAL: 304 Stainless Steel
WARRANTY: Lifetime

MAX BULL BAR/LIGHT BAR

OPTIONAL



- Mounts directly to MAX Winch Tray
- Made of 3" tube
- Mount up to 3 off-road lights for most applications
- Pre-drilled for wire management
- No drilling required

FINISH: Stainless
MATERIAL: 304 Stainless Steel
WARRANTY: Lifetime

FINISH: Black Powder Coat
MATERIAL: Steel
WARRANTY: 3 Year

SNYPER

WESTIN OFFROAD

OWN THE TRAIL



SNYPER MARKSMAN

FULL WIDTH FRONT BUMPER

- 7 gauge steel
- 1-piece fully welded construction
- Aggressive chiseled design
- Fits most medium frame 8,000-12,000 lbs winches (up to 10.25" tall)
- Pre-drilled for winch and fairlead mounting
- Fits most (4) flush mount auxiliary lights
- 1" thick HD shackle mounts
- Brackets mount directly to frame
- Textured black finish

FINISH: Textured Black
MATERIAL: Steel

WARRANTY
FINISH: 1 Year
MATERIAL: Limited Lifetime



LIGHTS OPTIONAL



SNYPER MARKSMAN BULL BAR FRONT BUMPER*



SNYPER MARKSMAN STINGER FRONT BUMPER*

*Shown with (4) FM4Q LED Flush Mount Lights - Sold Separately



SNYPER SCOPE BULL BAR
PART NO. 59-6525-12JKB5

SNYPER SCOPE

STUBBY FRONT BUMPER



- 7 gauge steel
- 1-piece fully welded construction
- Fits most medium frame 8,000-12,000 lbs winches (up to 10.25" tall)
- Brackets mount directly to frame
- Available in textured black finish

FINISH: Textured Black
MATERIAL: Steel

WARRANTY
FINISH: 1 Year
MATERIAL: Limited Lifetime

SNYPER SCOPE BULL BAR

STUBBY FRONT BUMPER



- 7 gauge steel
- Welded 2" diameter bull bar
- Fits most medium frame 8,000-12,000 lbs winches (up to 10.25" tall)
- Brackets mount directly to frame
- Available in textured black finish

FINISH: Textured Black
MATERIAL: Steel

WARRANTY
FINISH: 1 Year
MATERIAL: Limited Lifetime

SNYPER SCOPE STINGER

STUBBY FRONT BUMPER



- 7 gauge steel
- Welded 2" tube stinger
- Fits most medium frame 8,000-12,000 lbs winches (up to 10.25" tall)
- Brackets mount directly to frame
- Available in textured black finish

FINISH: Textured Black
MATERIAL: Steel

WARRANTY
FINISH: 1 Year
MATERIAL: Limited Lifetime



SNYPER RECOIL REAR BUMPER W/ TIRE CARRIER
PART NO. 59-5515-22JKS5

SNYPER RECOIL REAR BUMPER

W/ 2 LED FLUSH MOUNT LIGHTS INCLUDED

- 7 gauge steel
- 1-piece fully welded construction
- 1" thick HD shackle mounts
- (2) Flush mount LED lights included
- Welded hitch receiver
- Laser-cut Snyder logo on ends
- Brackets mount directly to frame
- Textured black finish

FINISH: Textured Black
MATERIAL: Steel

WARRANTY
FINISH: 1 Year
MATERIAL: Limited Lifetime



SNYPER RECOIL REAR BUMPER WITH TIRE CARRIER
ALSO AVAILABLE



FM40

LED FLUSH MOUNT
POWER OUTPUT: 12 WATTS
LIGHTS INCLUDED!



AVAILABLE ACCESSORIES:



D-SHACKLE



BALL
MOUNT KITS



SNYPER

WESTIN OFFROAD

SNYPER TUBULAR FENDERS

HARDWARE INCLUDED



FRONT TUBULAR FENDERS
SOLD IN PAIRS

REAR TUBULAR FENDERS
SOLD IN PAIRS

- Protect from flying debris
- Provide high clearance for Jeeps with large tires
- Made of 14 gauge steel
- 1.5" diameter .120" thick wall
- Front fender 6 7/16" wide
- Rear fender 4 7/8" wide
- Turn signal lights on front fenders
- Sold in pairs – (2) Front or (2) Rear
- Hardware included

FINISH: Textured Black
MATERIAL: Steel

WARRANTY
FINISH: 1 Year
MATERIAL: Limited Lifetime

NEW! SNYPER ROCK SLIDERS

MOUNT KIT INCLUDED



- Protect vehicle's rocker panel
- Snug rocker and body mounting provides maximum clearance*
- Black plated stainless steel hardware
- Fully functional step with minimal protrusion
- Slip resistant texture coated steel step plates
- Easy to clean removable step plate
- Equipped with two high-lift jack points
- Available for 2 door and 4 door applications

FINISH: Textured Black
MATERIAL: Steel

WARRANTY
FINISH: 1 Year
MATERIAL: Limited Lifetime

*Drilling required

SNYPER TRIPLE TUBE ROCK RAILS

MOUNT KIT INCLUDED



- Protect rocker panels
- Made of 16 gauge steel
- 2" diameter .120" thick wall tube
- Mount directly to vehicle frame
- Coarse texture coated step area for slip resistance
- Welded support plate with laser-cut Snypser logo
- Available for 2 and 4 door
- No drilling required

FINISH: Textured Black
MATERIAL: Steel

WARRANTY
FINISH: 1 Year
MATERIAL: Limited Lifetime

SNYPER

WESTIN OFFROAD

YOU NEED LED LIGHTS.
HOW YOU MOUNT THEM,
MATTERS



FOAM GASKETS INCLUDED TO
PROTECT VEHICLE FINISH



SNYPER OVERHEAD LED LIGHT HOOP

- Stainless steel fasteners for superior corrosion protection
- Side mount brackets to install 50" LED Bar
- Pre-drilled for wire management
- Lower pillar light mounting points for single post lights
- Textured black finish complements OEM vehicle trim
- Foam gaskets included to protect vehicle finish
- Bolt-on installation - no drilling required

FINISH: Textured Black
MATERIAL: Steel
WARRANTY: 3 Year

PART NO. 62-41005



FOAM GASKETS INCLUDED TO
PROTECT VEHICLE FINISH



SNYPER PILLAR LED LIGHT MOUNT

- Made of 7 gauge mild steel to sustain the weight of a 50" Light Bar
- Stainless steel fasteners for superior corrosion protection
- Textured black finish complements OEM vehicle trim
- Foam gaskets included to protect vehicle finish
- Bolt-on installation - no drilling required

FINISH: Textured Black
MATERIAL: Steel
WARRANTY: 3 Year

PART NO. 62-41035



SOLID CAST ALUMINUM MOUNTS



SQUIRTER RE-LOCATOR BRACKET INCLUDED



SNYPER LOWER PILLAR LIGHT MOUNTS

SOLD IN SET OF 2

- For post mount LED lights
- Lightweight solid platform made of cast aluminum
- Stainless steel fasteners for superior corrosion protection
- Textured black finish complements OEM vehicle trim
- Cast with wire management channel
- Foam gaskets included to protect vehicle finish
- Bolt-on installation - no drilling required

FINISH: Textured Black
MATERIAL: Die-cast Aluminum **PART NO. 62-41045**
WARRANTY: 3 Year

SNYPER LED HOOD MOUNT

SOLD IN SET OF 2

- Stainless steel fasteners for superior corrosion protection
- Easily installs directly to existing hood hinge bolt locations
- Low profile design does not obstruct drivers view
- Includes brackets to relocate windshield squirter
- Textured black finish complements OEM vehicle trim
- Foam gaskets included to protect vehicle finish
- Bolt-on installation - no drilling required

FINISH: Textured Black
MATERIAL: Die-cast Aluminum **PART NO. 62-41015**
WARRANTY: 3 Year

SNYPER LED COWL MOUNT

SOLD IN SET OF 2

- Stainless steel fasteners for superior corrosion protection
 - Mounts directly to existing cowl bolt locations
 - Textured black finish complements OEM vehicle trim
 - Foam gaskets included to protect vehicle finish
 - Bolt-on installation - no drilling required
- Note: Fits single LED Bar only*

FINISH: Textured Black
MATERIAL: Die-cast Aluminum **PART NO. 62-41025**
WARRANTY: 3 Year

BOLT-ON STYLING

SNYPER BUMPER MOUNT LIGHT BAR
PART NO. 62-41055



SNYPER BUMPER MOUNT LIGHT BAR

- Textured black finish compliments OEM vehicle trim
- Light tabs mount up to 3 single post lights or (1) 20" Light Bar
- Design does not obstruct headlights
- Bolt-on installation - no drilling required

FINISH: Textured Black
MATERIAL: Steel
WARRANTY: 3 Year

PART NO. 62-41055



SNYPER BUMPER MOUNT 30" LED BAR

SOLD IN SET OF 2

- Design does not obstruct headlights
- Textured black finish compliments OEM vehicle trim
- Bolt-on installation - no drilling required

FINISH: Textured Black
MATERIAL: Steel
WARRANTY: 3 Year

PART NO. 62-41065



TRAILBLAZER FRONT BUMPER

- Made of 2" diameter tube
- HD shackle mount tabs
- Angled light bar with light mounts tabs
- Utilizes Trailblazer Winch Tray Part No. 47-3106
- Contoured bumper provides off-road protection

FINISH: Black Wrinkle
MATERIAL: Steel
WARRANTY: 3 Year



TRAILBLAZER REAR BUMPER

- Made of 2" diameter tube
- Includes 2" hitch receiver
- Designed for spare tire clearance
- Rated to 350 lbs. tongue weight and 3,500 lbs trailer weight

FINISH: Black Wrinkle
MATERIAL: Steel
WARRANTY: 3 Year



TRAILBLAZER ROCKER BARS

- Made of 2" diameter tube
- Available for 2 and 4 door Wranglers

FINISH: Black Wrinkle
MATERIAL: Steel
WARRANTY: 3 Year

WINCHES



OR-9500 WINCH

**CORDED CONTROLLER INCLUDED
STEEL CABLE**



- Rated Line Pull: 9,500 lbs. Single line
- Motor: 6.6hp 12V series wound
- Weight: 80.5 lbs.
- Finish: Black
- Overall Dimensions: 22"(L) x 6.3"(W) X 8.1"(H)

OR-9500S WINCH

**CORDED CONTROLLER INCLUDED
SYNTHETIC ROPE**



- Rated Line Pull: 9,500 lbs. Single line
- Motor: 6.6hp 12V series wound
- Weight: 66 lbs.
- Finish: Black
- Overall Dimensions: 22"(L) x 6.3"(W) X 8.1"(H)

OR-12500 WINCH

**CORDED CONTROLLER INCLUDED
STEEL CABLE**



- Rated Line Pull: 12,500 lbs. Single line
- Motor: 6.6hp 12V series wound
- Weight: 80.5 lbs.
- Finish: Black
- Overall Dimensions: 22"(L) x 6.3"(W) X 8.1"(H)



DURABLE AND CAPABLE WINCHES

MECHANICAL COMPONENTS
WARRANTY: 3 YEAR

ELECTRICAL PARTS
WARRANTY: 12 MONTH

OR-12500S WINCH

**CORDED CONTROLLER INCLUDED
SYNTHETIC ROPE**



- Rated Line Pull: 12,500 lbs. Single line
- Motor: 6.6hp 12V series wound
- Weight: 66 lbs.
- Finish: Black
- Overall Dimensions: 22"(L) x 6.3"(W) X 8.1"(H)

ORI-10000S WINCH

**REMOTE CONTROLLER INCLUDED
SYNTHETIC ROPE**



- Rated Line Pull: 10,000 lbs. Single line
- Motor: 6.6hp 12V series wound
- Weight: 101 lbs.
- Finish: Black
- Overall Dimensions: 21.1"(L) x 6.3"(W) X 10.0"(H)

ORI-12000 WINCH

**REMOTE CONTROLLER INCLUDED
STEEL CABLE**



- Rated Line Pull: 12,000 lbs. Single line
- Motor: 6.6hp 12V series wound
- Weight: 101 lbs.
- Finish: Black
- Overall Dimensions: 21.3"(L) x 6.3"(W) X 10.0"(H)

ATV WINCHES

WINCH ACCESSORIES & REPLACEMENT PARTS



ATW PRO-3500 WINCH

**HANDLEBAR-MOUNTED SWITCH INCLUDE
STEEL ROPE**

- Rated Line Pull: 3,500 lbs. Single line
- Motor: 1.1hp permanent magnet motor 12V DC
- Weight: 28.6 lbs.
- Finish: Black with yellow ends
- Overall Dimensions: 4.9"(L) x 3.0"(W) x 3.0"(H)



AVAILABLE ACCESSORIES: CLEVIS HOOKS

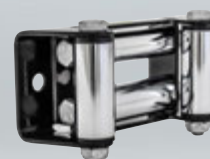


1/4" CLEVIS HOOK
3/8" CLEVIS HOOK
5/16" CLEVIS HOOK

CABLE ROPE



4-WAY ROLLER FAIRLEAD



HAWSE FAIRLEADS



POLISHED ALUMINUM FAIRLEAD-L (AFL)

POLISHED ALUMINUM FAIRLEAD-S (AFS)



RECOVERY KITS



ATV RECOVERY KIT ALSO AVAILABLE

WINCH COVER



SNYTHETIC ROPE



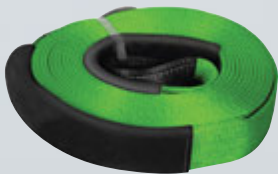
WINCH MOUNTING



COMPRESSORS



STRAPS



SHACKLES



CONTROL UNITS

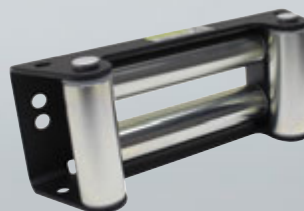


SNATCH BLOCK



4" SNATCH BLOCK

FAIRLEAD



CLEVIS HOOK



HARD WORK NEVER LOOKED THIS GOOD



HD RUNNING BOARDS

MOUNT KIT INCLUDED



- Mount kit included
- 14 gauge diamond tread
- Heavy duty welded steel construction
- Step surface includes 1" splash guard made of a continuous single sheet of metal
- Optional boot scraper included
- Silver finish available for vans only
- Made in the USA

FINISH: Textured Black
MATERIAL: Steel
WARRANTY: 3 Year

FINISH: Silver Powder Coat
MATERIAL: Steel
WARRANTY: 3 Year

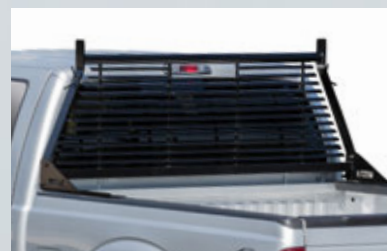
HD OVERHEAD TRUCK RACK



- Adjustable center cross bar included with each rack
- Slotted leg mounts adjust to fit all models precisely
- Gussets for superior strength
- Made of 2" round tube
- Full bed rail mounting plate included
- Optional hold down clamps available
- U.S. Patent No. D478,802

FINISH: Textured Black
MATERIAL: Steel
WARRANTY: 3 Year

HD HEADACHE RACK



- Angled louvers provide shade and protect rear window
- 2" diameter round top tube
- Welded tie-down hooks
- 4 mounting tabs for lights
- Drilling required

FINISH: Black Powder Coat
MATERIAL: Steel
WARRANTY: 3 Year

FINISH: White Powder Coat
MATERIAL: Steel
WARRANTY: 3 Year



HD HEADACHE RACK
PART NO. 57-8025

HD LADDER RACK



- Heavy duty 1.75" round top tube
- Use 1 in conjunction with headache rack
- Mount 2 for use without headache rack
- Includes 30" adjustable hook and loop strap*
- Drilling required

FINISH: Black Powder Coat
MATERIAL: Steel
WARRANTY: 3 Year

FINISH: White Powder Coat
MATERIAL: Steel
WARRANTY: 3 Year

*Hook and loop strap is provided for support only. It is not to be used as a sole means for securing cargo items.

CUSTOM TRUCK BED MATS

AND TAILGATE MATS



- Heat molded and cut for specific truck bed size and design applications
- 3/8" thick bed mat
- 1/8" thick tailgate mat
- For use with or without a spray liner
- Made of 100% recycled rubber
- Made in the USA

FINISH: Black
MATERIAL: Rubber
WARRANTY: 3 Year



TRUCK-PAL

TAILGATE LADDER



- Lightweight aluminum construction
- Duty rated at 300 lbs.
- Mountable on trucks with bed covers
- Fits open tailgates up to 38" high
- U.S. Patent No. 7,422,263

FINISH: Brushed
MATERIAL: 6063-T6 Alloy Aluminum
WARRANTY: 3 Year





ALWAYS THERE WHEN YOU NEED IT

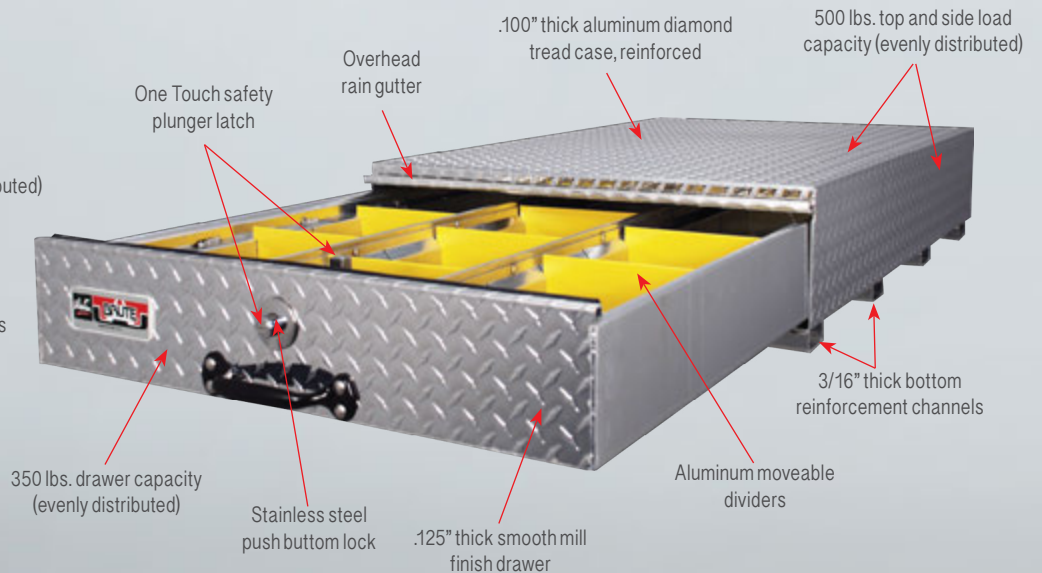


MADE IN THE USA

BEDSAFE BOX

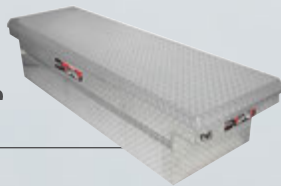
- Made of .100" thick aluminum diamond tread case, reinforced
- 3/16" thick bottom reinforcement channels
- 500 lbs top and side load capacity (evenly distributed)
- 350 lbs drawer capacity (evenly distributed)
- Over drawer rain gutter
- One Touch safety latch
- Fits the beds of pickups, service bodies and vans
- Many sizes available
- Drilling required

FINISH: Polished
MATERIAL: Aluminum
WARRANTY: Limited Lifetime





CROSSOVER BOXES



FULL LID AND LOW PROFILE LID

- Available in several dimensions: Standard, deep, wide, and deep & wide
- Made of .063 thick aluminum diamond tread
- Push button rotary latch
- .080 thick aluminum reinforcement throughout the tool box
- Includes a tool and level holder
- HD struts that re-force the lid
- Beveled lid design
- Full rubber weather seal
- Sturdy hinge points
- HD aluminum adjustable tray
- Under body support for added strength
- Full metal shield to protect rotary latches & linkage rods
- "J" hook for easy install



FINISH: Polished

MATERIAL: Aluminum

WARRANTY: Limited Lifetime

FINISH: Black Powder Coat

MATERIAL: Aluminum

WARRANTY: Limited Lifetime

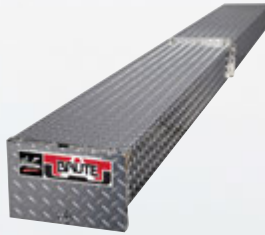
BRUTE TOOL BOXES

JOBSITE BOX



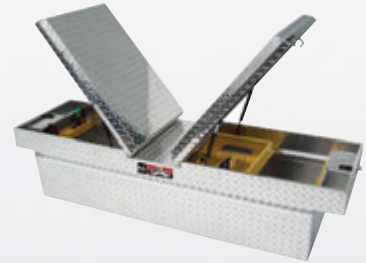
- Reinforced lid
- Locking Paddle Handle
- Beveled lid design – Reinforced
- 48" level holder
- Full rubber seal
- Two chrome handles
- Also available in black powder coated aluminum

CONDUIT CARRIERS



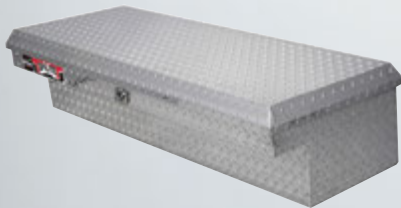
- Made of .063 thick aluminum construction
- Push button rotary latch
- Installation kit included
- Attaches to most ladder racks
- Lockable rotation hasp latch
- Spring loaded door
- Available in polished aluminum

GULL WING BOXES



- Available in several sizes: Standard, Deep, Wide and Deep & Wide
- Push button rotary latch
- Beveled lid design
- Full rubber weather seal
- Two gas props on each lid
- Also available in black powder coated aluminum

LOW PROFILE LOSIDER BOXES



- Low profile above bed rail
- Push button rotary latch
- Increased rear view vision
- Beveled lid design
- Full rubber weather seal
- "J" hook, easy install
- Also available in black powder coated aluminum

CHEST BOXES



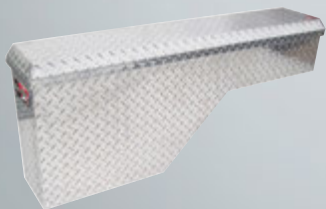
- Offset on rear allows 90° lid opening
- Push button rotary latch
- Beveled reinforced lid
- Full rubber weather seal
- Sit below side rails, perfect for 5th wheel trailers
- Full metal guards on gas props
- Also available in black powder coated aluminum

LOSIDER SIDE RAIL BOXES



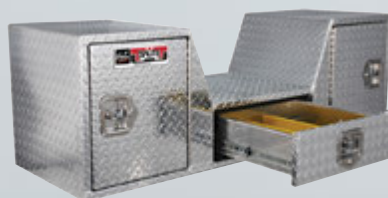
- Made of .063 thick aluminum construction
- Push button rotary latch
- Beveled lid design
- Full rubber weather seal
- "J" hook, easy install
- Full metal guards on gas props
- Also available in black powder coated aluminum

PORK CHOP BOXES



- Over the wheel well design
- Push button rotary latch
- Beveled reinforced lid
- Built-in organizer
- Full metal guards on gas props
- Also available in black powder coated aluminum

GOOSE NECK/FIFTH WHEEL



- Mounts at tailgate*
 - 2 recessed swing door compartments
 - 100 lb. capacity drawer slides
 - Easy access to all compartments
 - Stainless steel folding / locking T-handles
 - Also available in black powder coated aluminum
- *Clearance verification required

MAXIMUS CHEST BOXES



- Reinforced lid
- Push button rotary latch
- Gas prop & hardware shields
- Full rubber weather seal
- Also available in black powder coated aluminum

HIGH CAPACITY STAKE BED



- Designed for flat / stake beds
- Extra deep and tall
- Reinforced top shelf
- Heavy duty gas shocks on flip up door
- Secure stainless folding locking T-handles
- Option of bottom drawers or fold down doors
- Also available in black powder coated aluminum

TOP SIDER W/ DRAWER



- Designed for flat / stake beds
- Configuration varies by length
- Extra deep and tall
- Bottom drawers with organizers
- Reinforced top shelf to carry the load
- Secure stainless folding locking T-handles
- Also available in black powder coated aluminum

UNDER BODY BOXES



- Top drawer with stainless locking/folding T-handle
- Reinforced bottom door with support cables
- The bottom has a compartment for heavier cargo
- Full rubber weather seal
- Large rain gutter design to channel water away from valuable cargo

HD STEP BOXES



- Stainless Steel locking handle
- .125 thick smooth aluminum body
- .100 thick aluminum diamond tread door
- .080 thick perforated aluminum steps
- Angle reinforced back corners assist in mounting
- Welded aluminum construction
- Available in polished aluminum

HD UNDER BODY DROP DOWN



- Compression handle
- .100 thick diamond tread aluminum construction
- .125 thick smooth aluminum bottom corner reinforcement
- Welded gussets in each corner of door frame
- Stainless steel support cables
- Available in polished aluminum

HD UNDER BODY SWING



- Compression handle
- .100 thick diamond tread aluminum construction
- .125 thick smooth aluminum bottom corner reinforcement
- Welded gussets in each corner of door frame
- Stainless steel hinge
- Available in polished aluminum

HD TOPSIDER BOXES



- Compression handle
- .100 thick diamond tread aluminum construction
- Welded gussets in each corner of door frame
- Overhead rain gutter
- Roller cam latch
- Available in polished aluminum

HIGH CAPACITY HD TOPSIDER



- Compression handle
- .100 thick diamond tread aluminum construction
- Welded gussets in each corner of door frame
- Overhead rain gutter
- Roller cam latch
- Available in polished aluminum

HD UNDER BODY BOXES



- Compression handle
- 100 thick diamond tread aluminum construction
- Genuine trim-lock bulb seal
- Drawers with adjustable dividers
- Roller cam latch
- Available in polished aluminum

THE FIRST LINE OF DEFENSE ALL SEASON

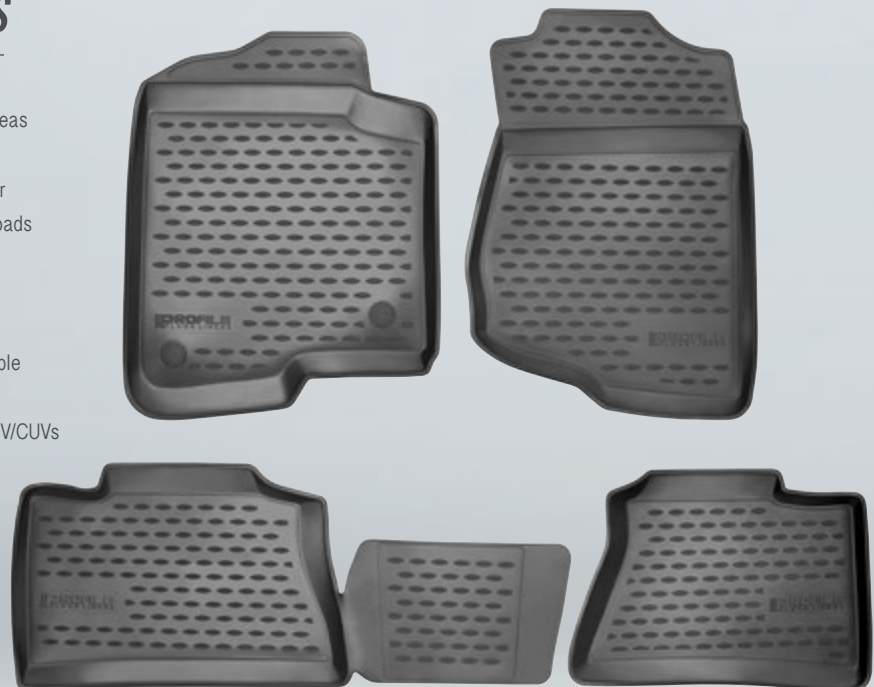
NEW! PROFILE FLOOR LINERS

- Protect vehicle carpet from daily wear and tear
- Front row liners protect driver and passenger side floor areas
- Easy to install
- Made of flexible, durable and odorless rubberized polymer
- Liners maintain their shape in heat, cold and from heavy loads
- Designs contour vehicle floor area
- 2" lip around liner edge keeps spills and debris contained
- Raised textured surface for great traction
- Equipped to accommodate retainer hooks where applicable
- Easy to clean with soap and water
- Application specific designs available for trucks, cars, SUV/UVs
- Great for use in all seasons
- Various liner combination sets available:
 - Front and rear/2nd row (3 or 4 pc)
 - Front, rear/2nd and 3rd row (4 or 5 pc)
 - Cargo liners also available for SUV/UV (1pc)

FINISH: Black

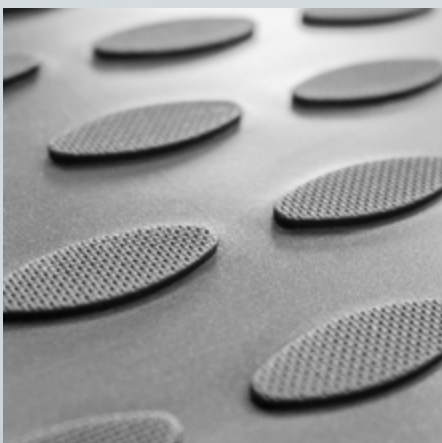
MATERIAL: Rubberized polymer

WARRANTY: Limited Lifetime





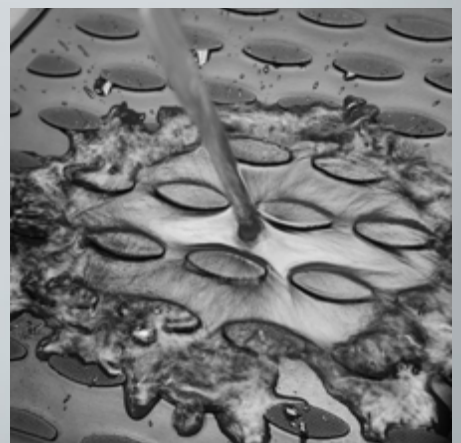
FEATURES



RAISED TEXTURED SURFACE



CONTOURED DESIGN



SPILL PROTECTION

FLOOR MATS

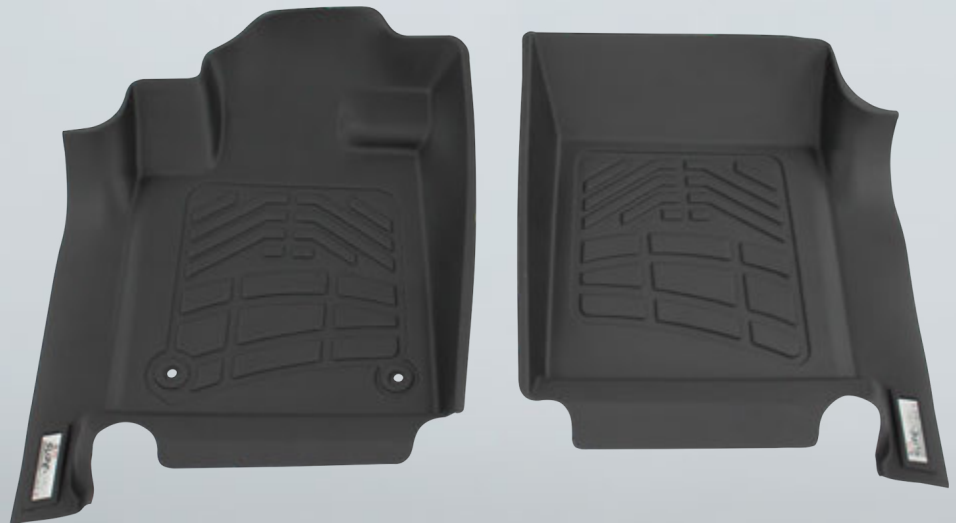


HEAVY DUTY SURE-FIT MATS / FRONT ROW

- Full coverage designs
- Rigid core and tactile surface
- Protects carpet for longevity
- Equipped with OE retention hook openings and 3M securing points
- Application specific
- Door seal coverage on most applications
- Available for most trucks and SUV/CUVs



FINISH: Black, Gray & Tan
MATERIAL: Molded Rubberized Copolymer
WARRANTY: Limited Lifetime



HEAVY DUTY FLOOR MATS

KEEP IT LOOKING FACTORY NEW



MADE IN THE USA

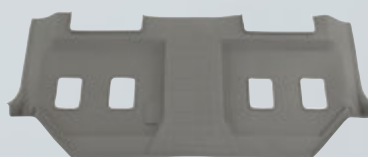
HEAVY DUTY SURE-FIT MATS / 2ND ROW



- Custom fit for specific applications
- Full coverage designs
- Application specific
- Available for most trucks and SUVs

FINISH: Black, Gray & Tan
MATERIAL: Molded Rubberized Copolymer
WARRANTY: Limited Lifetime

HEAVY DUTY SURE-FIT MATS / 3RD ROW



- Custom fit for specific applications
- Full coverage designs
- Application specific
- Available for SUVs with 3rd seat

FINISH: Black, Gray & Tan
MATERIAL: Molded Rubberized Copolymer
WARRANTY: Limited Lifetime

HEAVY DUTY SURE-FIT MATS / CARGO



- Protects cargo area
- Full coverage designs
- Application specific
- Available for CUV and SUVs

FINISH: Black, Gray & Tan
MATERIAL: Molded Rubberized Copolymer
WARRANTY: Limited Lifetime



ENHANCE YOUR VEHICLE'S APPEARANCE



TAPE-ON "SLIM" WIND DEFLECTORS
PART NO. 72-31482

PLATINUM BUG SHIELD
PART NO. 72-91130

WIND DEFLECTORS
TAPE-ON "SLIM"



- Sleek design reduces wind and noise
- Attaches using 3M automotive grade tape
- Reduces heat and glare
- Allows fresh air circulation during any weather condition

FINISH: High Gloss Smoke
MATERIAL: Aircraft Grade Acrylic
WARRANTY: Limited Lifetime

WIND DEFLECTORS
IN-CHANNEL



- Slips directly into the window channel
- Installs quickly and easily without exterior tape
- Secured using 3M automotive grade tape
- Allows fresh air circulation during any weather condition

FINISH: High Gloss Smoke
MATERIAL: Aircraft Grade Acrylic
WARRANTY: Limited Lifetime

PLATINUM BUG SHIELD



- Helps protect paint and windshield from rock chips
- Strong 1-piece construction
- Manufactured from high-impact acrylic
- Will not flex, flutter or vibrate at highway speeds
- No drilling required on most applications

FINISH: Smoke and Clear
MATERIAL: High-Impact Acrylic
WARRANTY: Limited Lifetime

WIND DEFLECTORS
CAB GUARD



- Shades cab from sun
- Reduces headlight glare during night driving
- Available in smoke and clear
- Allows fresh air into vehicle without being windblown

FINISH: High Gloss Smoke
MATERIAL: Aircraft Grade Acrylic
WARRANTY: Limited Lifetime

ULTRAGUARD BUG SHIELD



- Full-wrap bug shield
- Attractive design
- Manufactured from high-impact acrylic
- Bump-ons keep shield from touching hood
- Made in the USA

FINISH: Smoke and Clear
MATERIAL: High-Impact Acrylic
WARRANTY: Limited Lifetime

FRONT CAPS



- Protects tailgate against damage
- Gives vehicle a finished factory look
- Installs quickly and easily with 3M tape
- Matching bed caps available

FINISH: Black
MATERIAL: High-Impact ABS
WARRANTY: Limited Lifetime

WIND DEFLECTORS
WIND GUARD



- Flawless aerodynamic styling
- Allows fresh air in any weather condition
- Attaches using 3M automotive grade tape

FINISH: High Gloss Smoke
MATERIAL: Aircraft Grade Acrylic
WARRANTY: Limited Lifetime

HEADLIGHT AND TAIL LIGHT COVERS



- Protects lights from road debris
- Available in smoke and clear
- Application specific
- Installs in seconds

FINISH: High Gloss Smoke
MATERIAL: High-Impact Acrylic
WARRANTY: Limited Lifetime

TAILGATE COVERS



- Protects tailgate against damage
- Gives vehicle a finished factory look
- Installs quickly and easily with 3M tape
- Matching bed caps available

FINISH: Black
MATERIAL: High-Impact ABS
WARRANTY: Limited Lifetime

SUN ROOF



- Installs quickly and easily
- Attaches using 3M automotive grade tape

FINISH: High Gloss Smoke
MATERIAL: Aircraft Grade Acrylic
WARRANTY: Limited Lifetime

HOOD SCOOPS



- Gives the look of a performance hood
- Easily paintable to match your vehicle
- Manufactured from high impact ABS
- Universal fit
- Attaches using 3M automotive grade tape

FINISH: Paintable
MATERIAL: High-Impact ABS
WARRANTY: Limited Lifetime

BED CAPS



- Protect bed railing against damage
- Gives vehicle a finished factory look
- Install quickly and easily with 3M tape
- Available with or without stake pocket holes in ribbed or smooth finish

FINISH: Black
MATERIAL: High-Impact ABS
WARRANTY: Limited Lifetime



SKYTOP FRONT

JEEP WRANGLER ACCESSORY

- Manufactured from high gloss smoke impact acrylic
- Translucent high gloss smoke
- Allows an open feel, while providing protection from the elements
- Reduces heat, glare and wind

FINISH: High Gloss Smoke
MATERIAL: High-Impact Acrylic
WARRANTY: Limited Lifetime

PART NO. 72-51062

Fits Jeep® Wrangler Limited and Unlimited





BETTER VIEW OF THE OUTDOORS

SKYTOP COMBO

JEEP WRANGLER ACCESSORY

- Quick easy no drill installation
- Custom fit
- Easy on, easy off
- No drilling required

FINISH: High Gloss Smoke

MATERIAL: High-Impact Acrylic

WARRANTY: Limited Lifetime

PART NO. 72-51066

Fits Jeep® Wrangler Unlimited

FRONT SKYTOP



REAR SKYTOP

RECEIVER HITCHES



RECEIVER HITCHES - CLASS I

2,000 LB TOWING CAPACITY

- Up to 2,000 lbs. towing capacity
- 1.25" receiver
- 2" main body tubes, made of e-coated steel
- Unique delta cut safety chain loops
- Steel capped tube ends include a rubber plug for a finished look
- E-Coated steel for maximum corrosion protection
- Includes mounting tab for electrical connector
- Most feature a through bracket construction with double sided welds
- Stylized forged steel collar
- No drilling required for most applications
- Patent Pending
- Tested and validated by an independent lab to SAE specification J684. SAE J684 supersedes V.E.S.C. Regulation V5
- Textured black powder coat finish



WORKMANSHIP
WARRANTY: Limited Lifetime

FINISH: TEXTURED BLACK
WARRANTY: 3 Year



THE
STRENGTH
 TO TOW WHEREVER
 YOU WANT TO GO

RECEIVER HITCHES - CLASS III & IV

3,500 – 10,000 LB TOWING CAPACITY

- 3,500 – 5,000 lbs. towing (Class III)
- Up to 10,000 lbs. towing (Class IV)
- Trailer weight distributing up to 10,000 lbs.
- 2" receiver
- 2.5" structural steel tube
- Unique delta cut safety chain loops
- Steel capped tube ends include a rubber plug for a finished look
- E-Coated steel for maximum corrosion protection
- Includes mounting tab for electrical connector
- Most feature a through bracket construction with double sided welds
- Stylized forged steel collar
- No drilling required for most applications
- Patent Pending
- Tested and validated by an independent lab to SAE specification J684.
SAE J684 supersedes V.E.S.C. Regulation V5
- Textured black powder coat finish



WORKMANSHIP
WARRANTY: Limited Lifetime

FINISH: TEXTURED BLACK
WARRANTY: 3 Year

TOW ELECTRICAL

W4 SERIES TIME ACTUATED LED DISPLAY



- 2-Segment LED display
- Plugs into most OEM ports
- Controls 2 or 4 brake magnets
- Manual over-ride control
- Pigtail harness
- Mounts in any position
- EZ touch thumb wheel

W6 SERIES TIME ACTUATED DIGITAL DISPLAY



- 2-Segment digital display
- Plugs into most OEM ports
- Controls 2 to 8 brake magnets
- Manual over-ride control
- Pigtail harness
- Mounts in any position
- EZ touch thumb wheel

W8 SERIES PROPORTIONAL DISPLAY



- 6-Segment blue LCD digital display
- Plugs into most OEM ports
- Controls 2 to 8 brake magnets
- Manual over-ride control
- Pigtail harness
- Mounts in any position
- EZ touch thumb wheel

W10 SERIES GYRO ACCELEROMETER



- Plugs into most OEM ports
- Controls 2 to 8 brake magnets
- Manual over-ride control
- Pigtail harness
- Mounts in any position
- Overload indicator
- Manual brake activates brake lights

WIRING HARNESSSES



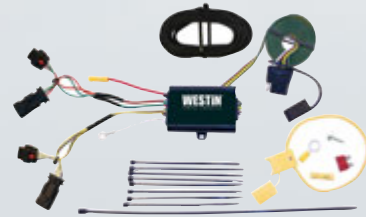
- Engineered to the highest industry standards
- Designed to mate seamlessly with OEM systems
- 12 gauge wire for lasting durability and safety
- 100% copper stranded wire
- For use with all Westin brake controllers

BREAK-AWAY KITS



- Push-To-Test confirms battery is fully charged, charging or low
- 5 AMP hour battery
- Break-away switch
- Mounting hardware included

T-CONNECTORS



- Complete one-piece harness designs
- Engineered to the highest industry standards
- Designed to mate seamlessly with OEM systems
- 100% copper stranded wire
- All T-Connectors contain OEM quality harness components, terminals, and connection housings
- Professional installation recommended

ADAPTERS



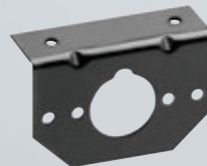
- Adapts OEM port to match your trailer requirements
- Moisture resistant
- Flat brass terminals
- Engineered and manufactured to SAE standards
- Environmentally tested

CONNECTORS



- Moisture resistant
- 100% copper stranded wire
- Flat brass terminals
- Engineered and manufactured to SAE standards
- Environmentally tested

MOUNTING BRACKETS



- Stamped steel for durability
- Mounting hardware included
- Engineered and manufactured to SAE standards
- Black powder coat finish

TAIL LIGHT CONVERTERS



- 2-Wire systems to tow vehicles equipped with 3-Wire systems
- Includes integrated protected cover
- Protective 4-Flat connector dust cap included
- Easy to install

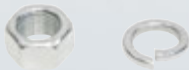
TRAILER BALLS

- Available in 3 ball sizes 4 shank lengths and 2 shank diameters to choose from
- Weight capacity range: 2,000 – 7,500 lbs.
- Chrome finish
- Nut and washer included
- Limited lifetime warranty



NUT AND WASHER

- Durable zinc finish
- Limited lifetime warranty



PIN AND CLIP

- For securing ball mounts and accessories to receiver hitches
- Limited lifetime warranty



QUICK LINK

- Provide quick connectors of chain, cable and rope
- Limited lifetime warranty



SAFETY CHAIN

- Secures the trailer to tow vehicle in case of hitch disconnect
- Limited lifetime warranty



RECEIVER EXTENDER

- Extends receiver tube providing additional clearance
- Black powder coat finish
- 3 year warranty



COUPLERS

- Durable zinc finish
- Lockable latch
- Limited lifetime warranty



RECEIVER ADAPTER

- Adapts receiver tube to a different size
- Black powder coat finish
- 3 year warranty



CLASS I BALL MOUNTS

- Available in 3 drop sizes
- Black powder coat finish
- 3 year warranty



MULTI-BALL MOUNT

- Fully welded trailer balls
- Includes 1 7/8", 2" and 2 5/16" ball sizes
- Black powder coat finish
- 3 year warranty



CLASS III BALL MOUNTS

- Available in 5 drop sizes
- Black powder coat finish
- 3 year warranty



BALL MOUNT KITS

- Chrome ball with black draw bar
- Pin and clip included
- Complete with trailer ball
- 3 year warranty





UNIVERSAL AND PERFECT MATCH BUMPERS

FEY DIAMONDSTEP



- Mount kit sold separately
- Popular diamond tread design
- Full size tongue weight of 800 lbs and 8,000 lbs trailer weight
- Downsize and compact are 350 lbs tongue weight and 3,500 lbs is trailer weight certified
- V5 tested certified to SAE J684

FINISH: Chrome, Black and Silver
MATERIAL: Cold Rolled Steel
WARRANTY: 3 Year

FEY SURESTEP



- Mount kit sold separately
- Full size tongue weight of 800 lbs and 8,000 lbs trailer weight
- 7 gauge hitch plate for full size
- 10 gauge hitch for mid size and connect
- 12 gauge face channel for full size trucks
- 13 gauge for mid size and compact
- V5 tested certified to SAE J684

FINISH: Chrome, Black and Silver
MATERIAL: Cold Rolled Steel
WARRANTY: 3 Year

FEY SURESTEP DELUXE



- Mount kit sold separately
- Full size tongue weight of 800 lbs and 8,000 lbs trailer weight
- 12 gauge face channel for full size trucks
- 13 gauge for mid size and compact trucks
- "Cold rolled bright steel" face channel
- V5 tested certified to SAE J684
- Molded polymer step surface

FINISH: Chrome, Black and Silver
MATERIAL: Cold Rolled Steel
WARRANTY: 3 Year



FEY PERFECT MATCH

SERIES BUMPERS

- Mount kit included
- OE style
- Complete assembly
- Molded polymer step pads
- V5 tested certified to SAE J684

FINISH: Chrome, Black and Gray
MATERIAL: Molded Polymer Step Pads
WARRANTY: 3 Year



CHEVY/GMC
 SILVERADO/SIERRA "CLASSIC"
 PART NO. 31006



DODGE RAM
 PART NO. 31004



FORD SUPERDUTY
 PART NO. 31002



DODGE RAM
 PART NO. 31005